

Product datasheet for RC208497

NALP1 (NLRP1) (NM_001033053) Human Tagged ORF Clone

Product data:

Product Type:	Expression Plasmids
Product Name:	NALP1 (NLRP1) (NM_001033053) Human Tagged ORF Clone
Tag:	Myc-DDK
Symbol:	NALP1
Synonyms:	AIADK; CARD7; CILED; CLR17.1; DEFCAP; DEFCAP-L/S; JRRP; MSPC; NAC; NALP1; PP1044; SLEV1; VAMAS1
Mammalian Cell Selection:	Neomycin
Vector:	pCMV6-Entry (PS100001)
E. coli Selection:	Kanamycin (25 ug/mL)
ORF Nucleotide Sequence:	>RC208497 ORF sequence Red=Cloning site Blue=ORF Green=Tags(s)

TTTTGTAATACGACTCACTATAGGGCGGCCGGAATTCGTCGACTGGATCCGGTACCGAGGAGATCTGCC
GCCGCGATCGCC

ATGGCTGGCGGAGCCTGGGGCCGCTGGCCTGTTACTTGGAGTTCCTGAAGAAGGAGGAGCTGAAGGAGT
TCCAGTCTCTGCTCGCCAATAAAGCGCACTCCAGGAGCTTCCGGTGAGACACCCGCTCAGCCAGAGAA
GACGAGTGGCATGGAGGTGGCCTCGTACCTGGTGGCTCAGTATGGGGAGCAGCGGGCCTGGGACCTAGCC
CTCCATACCTGGGAGCAGATGGGGCTGAGGTCACTGTGCGCCCAAGCCAGGAAGGGGCAGGCCACTCTC
CCTCATTCCCCTACAGCCCAAGTGAACCCACCTGGGGTCTCCAGCCAACCCACCTCCACCGCAGTGCT
AATGCCCTGGATCCATGAATTGCCGGCGGGTGCACCCAGGGCTCAGAGAGAAGGGTTTTGAGACAGCTG
CCTGACACATCTGGACGCCGCTGGAGAGAAATCTCTGCCTCACTCTCTACCAAGCTCTTCAAGCTCCC
CAGACCATGAGTCTCAAGCCAGGAGTCAACCAACGCCCCACATCCACAGCAGTCTGGGGAGCTGGGG
ATCCCCACCTCAGCCAGCCTAGCACCCAGAGAGCAGGAGGCTCCTGGGACCCAATGGCCTCTGGATGAA
ACGTGAGGAATTTACTACACAGAAATCAGAGAAAGAGAGAGAGAAATCAGAGAAAGGCAGGCCCCCAT
GGGCAGCGGTGGTAGGAACGCCCCACAGGCGCACACCAGCCTACAGCCCCACCACCACCCATGGGAGCC
TTCTGTGAGAGAGAGCCTCTGTTCCACATGGCCCTGGAAAAATGAGGATTTTAAACAAAATTCACACAG
CTGCTACTTCTACAAAGATCTCACCCAGAAGCCAAGATCCCCTGGTCAAGAGAAGCTGGCCTGATTATG
TGGAGGAGAATCGAGGACATTTAATTGAGATCAGAGACTTATTTGGCCCAGGCCTGGATACCCAAGAACC
TCGCATAGTCATACTGCAGGGGGCTGCTGGAATTGGGAAGTCAACTGGCCAGGCAGGTGAAGGAAGCC
TGGGGGAGAGGCCAGCTGTATGGGGACCGCTTCCAGCATGTCTTCTACTTCAGCTGCAGAGAGCTGGCCCC
AGTCCAAGGTGGTGAGTCTCGCTGAGCTCATCGAAAAAGATGGGACAGCCACTCCGGCTCCCATTAGACA
GATCCTGTCTAGGCCAGAGCGGGTCTCTTTCATCCTCGATGGTGTAGATGAGCCAGGATGGGTCTTGACG
GAGCCGAGTTCTGAGCTCTGTCTGCACTGGAGCCAGCCACAGCCGGCGGATGCACTGCTGGGCAGTTTGC
TGGGAAAATACTTCCCAGGCATCCTTCTGATCACGGCTCGGACCACAGCTCTGCAGAACCTCAT



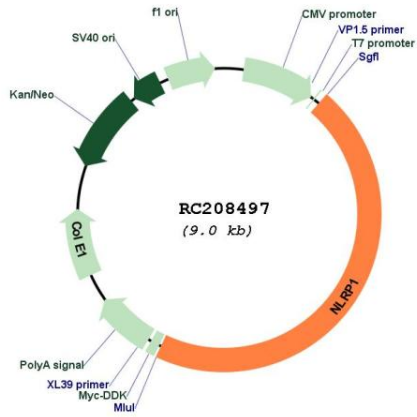
[View online »](#)

TCCTTCTTTGGAGCAGGCACGTTGGGTAGAGGTCTGGGGTTCTCTGAGTCCAGCAGGAAGGAATATTTCT
TACAGATATTTACAGATGAAAGGCAAGCAATTAGAGCCTTTAGGTTGGTCAAATCAAACAAAGAGCTCT
GGGCCCTGTGTCTTGTGCCCTGGGTGTCTGGCTGGCCTGCACCTGCCTGATGCAGCAGATGAAGCGGAA
GGAAAACTCACACTGACTTCCAAGACCACCACAACCCCTGTCTACATTACCTTGCCAGGCTCTCCAA
GCTCAGCCATTGGGACCCAGCTCAGAGACCTGTCTCTGGCTGTGAGGGCATCTGGCAAAAAAGA
CCCTTTTTCAGTCCAGATGACCTCAGGAAGCATGGGTAGATGGGGCCATCATCTCCACCTTCTTGAAGAT
GGGTATTCTTCAAGAGCACCCCATCCCTCTGAGCTACAGCTTCATTACCTCTGTTTCCAAGATCTTTT
GCAGCAATGTCTATGTCTTGGAGGATGAGAAGGGGAGAGGTAACATTCTAATTGCATCATAGATTTGG
AAAAGACGCTAGAAGCATATGGAATACATGGCCTGTTTGGGGCATCAACCACACGTTTCTATTGGGCC
GTTAAGTGATGAGGGGGAGAGAGATGGAGAACATCTTCACTGCCGGTGTCTCAGGGGAGGAACCTG
ATGCAGTGGTCCCGTCCCTGCAGCTGTCTGCAGCCACACTCTCTGGAGTCCCTCCACTGCTGTACG
AGACTCGAACAACAAAGTCTGACACAAGTGATGGCCATTTGGAAGAAATGGGCATGTGTGTAGAAAC
AGACATGGAGCTTATGTGTCACTTTCTGCATTAATTCAGCCGCCACGTGAAGAAGCTTCAGCTGATT
GAGGGCAGGCAGCACAGATCAACATGGAGCCCAACATGGTAGTCTGTTGAGTGGTCCCAGTACAG
ATGCCTATTGGCAGATTCTTTCTCCGTCTCAAGGTACCAGAAACCTGAAGGAGCTGGACCTAAGTGG
AAACTCGCTGAGCCACTCTGCAGTGAAGAGTCTTTGTAAGACCCTGAGACGCCCTCGCTGCCTCCTGGAG
ACCCTGCGGTTGGCTGGCTGTGGCCTCACAGCTGAGGACTGCAAGGACCTTGCCCTTTGGGCTGAGAGCCA
ACCAGACCCTGACCGAGCTGGACCTGAGCTTCAATGTGCTCACGGATGCTGGAGCCAAACACCTTTGCCA
GAGACTGAGACAGCCGAGCTGCAAGCTACAGCGACTGCAGCTGGTGCAGCTGTGGCCTCACGTCTGACTGC
TGCCAGGACCTGGCCTCTGTGCTTAGTGCCAGCCCCAGCTGAAGGAGCTAGACCTGCAGCAGAACAACC
TGGATGACGTTGGCGTGCAGTGTCTGTGAGGGGCTCAGGCATCCTGCCTGCAAACTCATAACGCTGGG
GCTGGACCAGACAACCTCTGAGTGATGAGATGAGGCAGAACTGAGGGCCCTGGAGCAGGAAACCTCAG
CTGCTCATCTTTCAGCAGACGGAACCAAGTGATGACCCCTACTGAGGGCCTGGATACGGGAGAGATGA
GTAAATAGCACATCCTCACTCAAGCGGCAGAGACTCGGATCAGAGAGGGCGGCTTCCCATGTTGCTCAGGC
TAATCTCAAACTCCTGGACGTGAGCAAGATCTTCCCAATTGCTGAGATTGCAGGCAAGAGCCACGAGGAA
AGCTCCCCAGAGGTAGTACCGGTGAACTCTTGTGCGTGCCTTCTCCTGCCTCTCAAGGGGACCTGCATA
CGAAGCCTTTGGGGACTGACGATGACTTCTGGGGCCCCACGGGGCCTGTGGCTACTGAGGTAGTTGACAA
AGAAAAGAACTTGTACCGAGTTCACTTCCCTGTAGCTGGCTCCTACCGCTGGCCCAACACGGGTCTCTGC
TTTGTGATGAGAGAAGCGGTGACCGTTGAGATTGAATTCTGTGTGTGGGACCAGTTCTGGGTGAGATCA
ACCCACAGCACAGCTGGATGGTGGCAGGGCCTCTGCTGGACATCAAGGCTGAGCCTGGAGCTGTGGAAGC
TGTGCACCTCCCTCACTTTGTGGCTCTCAAGGGGGCCATGTGGACACATCCCTGTTCCAAATGGCCAC
TTTAAAGAGGAGGGGATGCTCCTGGAGAAGCCAGCCAGGGTGGAGCTGCATCACATAGTTCTGGAAAACC
CCAGCTTCTCCCCCTTGGGAGTCTCCTGAAAATGATCCATAATGCCCTGCGCTTCAATCCCCTCACCTC
TGTGGTGTGCTTTACCACCGCTCCATCCTGAGGAAGTACCTTCCACCTCTACCTGATCCCAAGTGAC
TGCTCCATTCCGAAGGCCATAGATGATCTAGAAATGAAATTCAGTTTGTGCGAATCCACAAGCCACCCC
CGCTGACCCCACTTTATATGGGCTGTGTTACACTGTGTCTGGTCTGGTTCAGGGATGCTGGAAATACT
CCCCAAGGAACTGGAGCTCTGCTATCGAAGCCCTGGAGAAGACCAGCTGTTCTCGGAGTTCTACGTTGGC
CACTTGGGATCAGGGATCAGGCTGCAAGTGAAGACAAGAAAGATGAGACTCTGGTGTGGGAGGCCCTGG
TGAAACCAGGAAGGAACACCAGCCAGCCGTGGAACCTCAGGTGCAACAGAGACGCCAGGAGATAC

ACGCGTACGCGGGCCGCTCGAGCAGAACTCATCTCAGAAGAGGATCTGGCAGCAAATGATATCCTGGATT
ACAAGGATGACGACGATAAGGTTTAA

OTI Disclaimer:	The molecular sequence of this clone aligns with the gene accession number as a point of reference only. However, individual transcript sequences of the same gene can differ through naturally occurring variations (e.g. polymorphisms), each with its own valid existence. This clone is substantially in agreement with the reference, but a complete review of all prevailing variants is recommended prior to use. More info
OTI Annotation:	This clone was engineered to express the complete ORF with an expression tag. Expression varies depending on the nature of the gene.
Components:	The ORF clone is ion-exchange column purified and shipped in a 2D barcoded Matrix tube containing 10ug of transfection-ready, dried plasmid DNA (reconstitute with 100 ul of water).
Reconstitution Method:	<ol style="list-style-type: none">1. Centrifuge at 5,000xg for 5min.2. Carefully open the tube and add 100ul of sterile water to dissolve the DNA.3. Close the tube and incubate for 10 minutes at room temperature.4. Briefly vortex the tube and then do a quick spin (less than 5000xg) to concentrate the liquid at the bottom.5. Store the suspended plasmid at -20°C. The DNA is stable for at least one year from date of shipping when stored at -20°C.
RefSeq:	NM_001033053.3
RefSeq Size:	5100 bp
RefSeq ORF:	4128 bp
Locus ID:	22861
UniProt ID:	Q9C000
Cytogenetics:	17p13.2
Protein Families:	Druggable Genome
Protein Pathways:	NOD-like receptor signaling pathway
MW:	154.9 kDa
Gene Summary:	This gene encodes a member of the Ced-4 family of apoptosis proteins. Ced-family members contain a caspase recruitment domain (CARD) and are known to be key mediators of programmed cell death. The encoded protein contains a distinct N-terminal pyrin-like motif, which is possibly involved in protein-protein interactions. This protein interacts strongly with caspase 2 and weakly with caspase 9. Overexpression of this gene was demonstrated to induce apoptosis in cells. Multiple alternatively spliced transcript variants encoding distinct isoforms have been found for this gene, but the biological validity of some variants has not been determined. [provided by RefSeq, Jul 2008]

Product images:



Circular map for RC208497