

Product datasheet for RC208496

CABS1 (NM_033122) Human Tagged ORF Clone

Product data:

Product Type:	Expression Plasmids
Product Name:	CABS1 (NM_033122) Human Tagged ORF Clone
Tag:	Myc-DDK
Symbol:	CABS1
Synonyms:	C4orf35; CLPH; NYD-SP26
Mammalian Cell Selection:	Neomycin
Vector:	pCMV6-Entry (PS100001)
E. coli Selection:	Kanamycin (25 ug/mL)
ORF Nucleotide Sequence:	>RC208496 ORF sequence Red=Cloning site Blue=ORF Green=Tags(s)

TTTTGTAATACGACTCACTATAGGGCGGCCGGAATTCGTCGACTGGATCCGGTACCGAGGAGATCTGCC
GCC**CGATCGCC**

ATGGCTGAAGATGGTTTGCCAAAATTTATTCTCATCCTCCAACAGAAAGCAGTAAAACACCAACTGCAG
CAACCATTTTCTTTGGGGCTGACAATGCTATTCCAAATCAGAAACAATTAATCTCAGAAAGGAGACCA
CGTCACCTCAGTAAATGAATATATGCTAGAAAGCGATTTTCAACAACACAGACAACAACTGACAGCT
AAAAGGAAAACTCAAATCAGAAGATGATATGGGACCGACTTTATTAAGTCAACAACACCTACAGAC
AAGAAATTACCTCTGACTGGCACTACAACTCCATAACAAGAGACTCTATTACCGAACATTTTCATGCC
AGTGAAAATTGGGAATATTTATCACCAGTTACTACTGTTTCTTTAATAGATTTTCCACTGACATAGCA
AAAGAAGATATCCTTTAGCTACCATTTGACACAGGAGATGCAGAGATCTCAATAACCTCTGAAGTCTCTG
GCACACTAAAGGACAGCAGTGGTGGTGTGCTGACGCTCTGCCTTTCCACGTAAAAAGGATGAAGCTGA
TATGAGCAATTATAATTCCTCCATCAAATCCAATGTCCCTGTGATGAGGCTGTCCAGGTCACTGATTCC
ATTATTCCTGAGGCTGAAATCCCTCCTGCTCCTGAAGAAAGCTTCACTACTATCCAGACATAACTGCC
TTGAAGAAGAGAAAAAACCAGAAATGACCTAAGTGTGTTTGAAGATGACACCAGTGTGTGGCTACATT
AACTGACTCTGATGAGAAGTTTACTGCTGTTTGAACACTACTACCTCTGCTGAAAAAGACAAAGATAAA
CGGGAAGATACTGCTAACTGATGAAGAAACTACCGAGGGAGCCAGTATTGGGATGGAGAGAGATACTG
CAAATGAAGCAGAGACCCATTCTGTTTGGCTTACTGCTGTTGAATCCAGATATGACTTCGTTGCTCCTGC
ATCAATAGCTACAAACCTAGTGGAAAGATCATCTACAGAAGAAGATTTGTCTGAAACTGATAATACAGAG
ACTGTACCTAAGATCACTGAGCCATTTTCTGGAACACTCTGTATTAGATACCCAGACTATAAGGAAG
ACACCTCCACAACCTGAAACGGATATCTTTGAACTACTGAAAGAAGAACCCGATGAGTTTCATGATT

ACGGTACGGCGCGCTCGAGCAGAAACTCATCTCAGAAGAGGATCTGGCAGCAATGATATCCTGGATT
ACAAGGATGACGACGATAAGGTTTAA



[View online »](#)

Protein Sequence: >RC208496 protein sequence
Red=Cloning site Green=Tags(s)

MAEDGLPKIYSHPPTESSKTPTAATIFFGADNAIPKSETTITSEGDHVTSVNEYMLESDFSTTTDNKLTAKKEKLKSEDDMGTDFIKSTTHLQKEITSLTGTTNSITRDSITEHFMPVKIGNISSPVTTVSLIDFSTDIAKEDILLATIDTGDAEISITSEVSGTLKDDSSAGVADAPAFPRKKDEADMSNYNSSIKSNVPADEAVQVTDSEIIPEAEIPPAPEESFTTIPDITALEEEKIITEIDL SVLEDDTSAVATL TDSDEKFITVFELTTSAEKDKDKREDTLLTDEETTEGASIGMERDTANEAEHSHVLLTAVESRYDFVVPASIAIATNLVEESSTEEDLSETDNTE TVPKITEPFSGTTSVLDTPDYKEDTSTTETDIFELLKEEPDEFMI

TRTRPLEQKLISEEDLAANDILDYKDDDDKV

Chromatograms: https://cdn.origene.com/chromatograms/mk6349_f09.zip

Restriction Sites: SgfI-MluI

Cloning Scheme:



* The last codon before the Stop codon of the ORF

ACCN: NM_033122

ORF Size: 1185 bp

OTI Disclaimer: The molecular sequence of this clone aligns with the gene accession number as a point of reference only. However, individual transcript sequences of the same gene can differ through naturally occurring variations (e.g. polymorphisms), each with its own valid existence. This clone is substantially in agreement with the reference, but a complete review of all prevailing variants is recommended prior to use. [More info](#)

OTI Annotation: This clone was engineered to express the complete ORF with an expression tag. Expression varies depending on the nature of the gene.

Components: The ORF clone is ion-exchange column purified and shipped in a 2D barcoded Matrix tube containing 10ug of transfection-ready, dried plasmid DNA (reconstitute with 100 ul of water).

Reconstitution Method:

1. Centrifuge at 5,000xg for 5min.
2. Carefully open the tube and add 100ul of sterile water to dissolve the DNA.
3. Close the tube and incubate for 10 minutes at room temperature.
4. Briefly vortex the tube and then do a quick spin (less than 5000xg) to concentrate the liquid at the bottom.
5. Store the suspended plasmid at -20°C. The DNA is stable for at least one year from date of shipping when stored at -20°C.

RefSeq: [NM_033122.2](#), [NP_149113.2](#)

RefSeq Size: 1558 bp

RefSeq ORF: 1188 bp

Locus ID: 85438

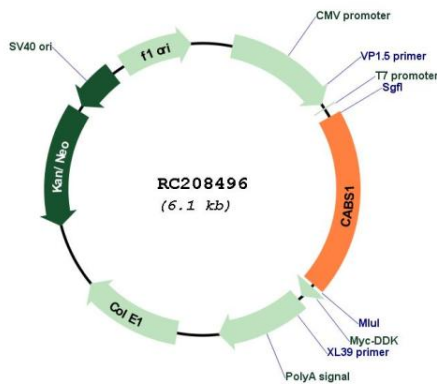
UniProt ID: [Q96KC9](#)

Cytogenetics: 4q13.3

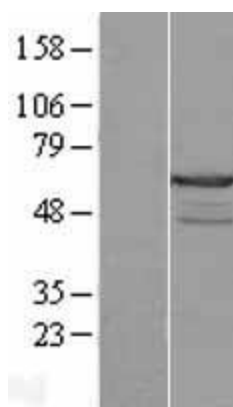
MW: 42.9 kDa

Gene Summary: Calcium-binding protein (By similarity). Essential for maintaining the structural integrity of the sperm flagella (By similarity).[UniProtKB/Swiss-Prot Function]

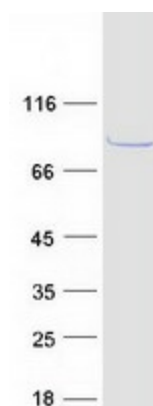
Product images:



Circular map for RC208496



Western blot validation of overexpression lysate (Cat# [LY409727]) using anti-DDK antibody (Cat# [TA50011-100]). Left: Cell lysates from untransfected HEK293T cells; Right: Cell lysates from HEK293T cells transfected with RC208496 using transfection reagent MegaTran 2.0 (Cat# [TT210002]).



Coomassie blue staining of purified CABS1 protein (Cat# [TP308496]). The protein was produced from HEK293T cells transfected with CABS1 cDNA clone (Cat# RC208496) using MegaTran 2.0 (Cat# [TT210002]).