

Product datasheet for **RC208488**

C6orf62 (NM_030939) Human Tagged ORF Clone

Product data:

Product Type:	Expression Plasmids
Product Name:	C6orf62 (NM_030939) Human Tagged ORF Clone
Tag:	Myc-DDK
Symbol:	C6orf62
Synonyms:	dj30M3.2; Nbla00237; XTP12
Mammalian Cell Selection:	Neomycin
Vector:	pCMV6-Entry (PS100001)
E. coli Selection:	Kanamycin (25 ug/mL)
ORF Nucleotide Sequence:	>RC208488 ORF sequence Red=Cloning site Blue=ORF Green=Tags(s)

TTTTGTAATACGACTCACTATAGGGCGCCGGGAATTCGTCGACTGGATCCGGTACCGAGGAGATCTGCC
GCC**CGATCGCC**

ATGGGGACCCAACTCCCGGAAGAAACAAGCTCTGAACAGACTACGTGCTCAGCTTAGAAAGAAAAAG
AATCTCTAGCTGACCAGTTTGACTTCAAGATGTATATTGCCTTTGTATTCAAGGAGAAGAAGAAAAAGTC
AGCACTTTTGAAGTGTCTGAGGTTATACCAGTCATGACAATAATTGAAGAAAATATCCTGAAAGGT
GTGCGAGATTCCAGCTATTCCTTGAAAGTTCCTAGAGCTTTACAGAAGGATGTGGTACAGCTCCATG
CTCCTCGATATCAGTCTATGAGAAGGGATGTAATTGGCTGTACTCAGGAGATGGATTTTCATTCTTTGGCC
TCGGAATGATATTGAAAAATCGTCTGTCTCCTGTTTTCTAGGTGAAAGAATCTGATGAGCCTTTTAGG
CCTGTTACAGGCCAAATTTGAGTTTCATCATGGTACTATGAAAAACAGTTTCTGCATGACTGAGCCGCA
AGGACAAGACTGGAATCGTTGTCAACAATCCTAACCAGTCAGTGTCTCTTTCATTGACAGACAGCACTT
GCAGACTCCAAAAACAAGCTACAATCTCAAGTTATGCAGCATCTGCCTCTACCTGCCACAGGAACAG
CTCACCCACTGGGCAGTTGGCACCATAGAGGATCACCTCCGTCTTATATGCCAGAG

ACGCGTACGCGGGCCGCTCGAGCAGAAACTCATCTCAGAAGAGGATCTGGCAGCAAATGATATCCTGGATT
ACAAGGATGACGACGATAAGGTTTAA



[View online »](#)

Protein Sequence: >RC208488 protein sequence
Red=Cloning site Green=Tags(s)

MGDPNSRKKQALNRLRAQLRKKKESLADQFDKMYIAFVFKEKKKKSALFEVSEVIPVMTNNYEENILKG
 VRDSSYSLESLLELLQKDVVQLHAPRYQSMRRDVI GCTQEMDFILWPRNDIEKIVCLLFSRWKESDEPFR
 PVQAKFEFHGGDYEQFLHVL SRKDKTGIVVNNPNQSVFLFIDRQHLQTPKNKATIFKLCSICLYLPQEQ
 LTHWAVGTIEDHLRPYMP E

TRTRPLEQKLISEEDLAANDILDYKDDDDKV

Chromatograms: https://cdn.origene.com/chromatograms/mk6820_a07.zip

Restriction Sites: SgfI-MluI

Cloning Scheme:



ACCN: NM_030939

ORF Size: 687 bp

OTI Disclaimer: The molecular sequence of this clone aligns with the gene accession number as a point of reference only. However, individual transcript sequences of the same gene can differ through naturally occurring variations (e.g. polymorphisms), each with its own valid existence. This clone is substantially in agreement with the reference, but a complete review of all prevailing variants is recommended prior to use. [More info](#)

OTI Annotation: This clone was engineered to express the complete ORF with an expression tag. Expression varies depending on the nature of the gene.

Components: The ORF clone is ion-exchange column purified and shipped in a 2D barcoded Matrix tube containing 10ug of transfection-ready, dried plasmid DNA (reconstitute with 100 ul of water).

Reconstitution Method:

1. Centrifuge at 5,000xg for 5min.
2. Carefully open the tube and add 100ul of sterile water to dissolve the DNA.
3. Close the tube and incubate for 10 minutes at room temperature.
4. Briefly vortex the tube and then do a quick spin (less than 5000xg) to concentrate the liquid at the bottom.
5. Store the suspended plasmid at -20°C. The DNA is stable for at least one year from date of shipping when stored at -20°C.

RefSeq: [NM_030939.5](#)

RefSeq Size: 2498 bp

RefSeq ORF: 690 bp

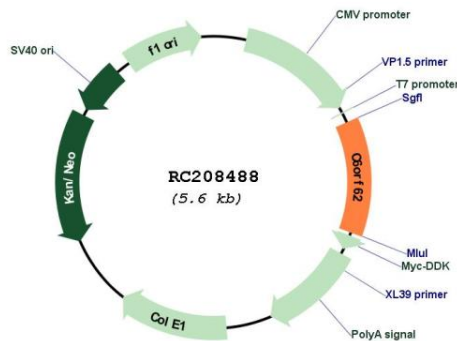
Locus ID: 81688

UniProt ID: [Q9GZU0](#)

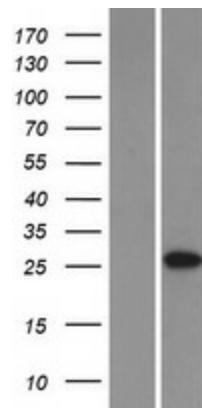
Cytogenetics: 6p22.3

MW: 27.1 kDa

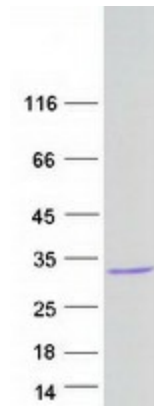
Product images:



Circular map for RC208488



Western blot validation of overexpression lysate (Cat# [LY410655]) using anti-DDK antibody (Cat# [TA50011-100]). Left: Cell lysates from untransfected HEK293T cells; Right: Cell lysates from HEK293T cells transfected with RC208488 using transfection reagent MegaTran 2.0 (Cat# [TT210002]).



Coomassie blue staining of purified C6orf62 protein (Cat# [TP308488]). The protein was produced from HEK293T cells transfected with C6orf62 cDNA clone (Cat# RC208488) using MegaTran 2.0 (Cat# [TT210002]).