

Product datasheet for **RC208480**

KDM1A (NM_015013) Human Tagged ORF Clone

Product data:

Product Type:	Expression Plasmids
Product Name:	KDM1A (NM_015013) Human Tagged ORF Clone
Tag:	Myc-DDK
Symbol:	KDM1A
Synonyms:	AOF2; BHC110; CPRF; KDM1; LSD1
Mammalian Cell Selection:	Neomycin
Vector:	pCMV6-Entry (PS100001)
E. coli Selection:	Kanamycin (25 ug/mL)



[View online »](#)

ORF Nucleotide Sequence:

>RC208480 representing NM_015013
 Red=Cloning site Blue=ORF Green=Tags(s)

TTTTGTAATACGACTCACTATAGGGCGGCCGGGAATTCGTCGACTGGATCCGGTACCGAGGAGATCTGCC
 GCC**CGGATCGCC**

ATGTTATCTGGGAAGAAGCGCGCAGCCGCGCGCGCGGCTGCAGCGGCAGCAACCGGGACGGAGGCTG
 GCCTGGGACAGCAGCGCGCTCCGAGAACGGGCTGAGGTGGCCGCGCAGCCCGCGGGCCTGCGGGCCC
 AGCCGAGGTGGGCGCGGGGCGGTGGGGAGCGCACACCCCGCAAGAAAGAGCCTCCGCGGGCCTCGCCC
 CCCGGGGCCTGGCGGAACCGCGGGGTCCGAGGGCCTCAGGCCGGCCCTACTGTCTGCTGGTCTG
 CGACCCCATGGAAGTGAATAGCAGAGACTCCGGAGGGGCGTCCGACCAGCCGCGCAAGCGGGCGAA
 GGTAGAGTACAGAGAGATGGATGAAAGCTTGCCAACTCTCAGAAGATGAGTATTATTCAGAAGAAGAG
 AGAAATGCCAAAGCAGAGAAGGAAAAGAAGCTTCCCCACCACCCCTCAAGCCCCACCTGAGGAAGAAA
 ATGAAAGTGAACCTGAAGAACCATCGGGTGTGGAGGGCGCAGCTTCCAGAGCCGACTTCTCATGACCG
 GATGACTTCTCAAGAAGCAGCCTGTTTTCCAGATATTATCAGTGGACCACAACAGACCCAGAAGTTTTT
 CTTTTATTAGAAACCGCACACTGCAGTTGTGGTTGGATAATCCAAAGATTTCAGCTGACATTTGAGGCTA
 CTCTCCAACAATTAGAAGCACCTTATAACAGTGATACTGTGCTTGTCCACCGAGTTCACAGTTATTTAGA
 GCGTCATGGTCTTATCAACTTCGGCATCTATAAGAGGATAAAAACCCCTACCAACTAAAAAGACAGGAAA
 GTAATTATTATAGGCTCTGGGTCTCAGGCTTGGCAGCAGCTCGACAGTTACAAAGTTTTGGATGGATG
 TCACACTTTTGAAGCCAGGGATCGTGTGGGTGGACGAGTTGCCACATTCGCAAAGGAACTATGTAGC
 TGATCTGGAGCCATGGTGGTAACAGGTCTTGGAGGGAATCCTATGGCTGTGGTCAGCAACAAGTAAAT
 ATGGAAGTGGCAAGATCAAGCAAAAATGCCACTTTATGAAGCAACGGACAAGCTGTTCTAAAGAGA
 AAGATGAAATGGTAGAGCAAGAGTTTAAACGGTTGCTAGAAGCTACATCTTACCTTAGTCACTCAAGAG
 CTCAATGTCCTCAATAATAAGCATGTGTCCCTTGGCCAGGCATTGGAAGTTGTCATTTCAGTTACAAGAG
 AAGCATGTCAAAGATGAGCAGATTGAACATTGGAAGAAGATAGTAAAACTCAGGAAGAATTGAAAGAAC
 TTCTTAATAAGATGGTAAATTTGAAAGAGAAAATTAAGAAGTCCATCAGCAATACAAAGAAGCATCTGA
 AGTAAAGCCACCCAGAGATTAATGCGGAGTTCTTAGTGAAAAGCAAACACAGGGATCTGACCGCCCTA
 TGCAAGGAATATGATGAATTAGCTGAAACACAAGGAAAGCTAGAAGAAAACTTCAGGAGTTGGAAGCGA
 ATCCCCAAGTGATGATATCTCTCATCAAGAGACAGACAATACTTGATTGGCATTTCGAAATCTTGA
 ATTTGCTAATGCCACACCTCTCAACTCTCCCTTAAGCACTGGGATCAGGATGATGACTTTGAGTTC
 ACTGGCAGCCACCTGACAGTAAGGAATGGCTACTCGTGTGTGCCCTGTGGCTTTAGCAGAAGGCCTAGACA
 TTAAGTGAATACAGCAGTGCAGACAGTTCCGCTACACGGCTTCAGGATGTGAAGTATAGCTGTGAATAC
 CCGCTCCACGAGTCAAACCTTTATTTATAAATGCGACGCAAGTTCTCTGTACCCCTCCCCTGGGTGTGCTG
 AAGCAGCAGCCACCCAGCCGTTTCAGTTTGTGCCACCTCTCCCTGAGTGGAAAAATCTGCAGTCCAAGGA
 TGGGATTTGGCAACCTTAAACAAGGTGGTGTGTGTTTTGATCGGGTGTCTGGGATCCAAGTGTCAATTT
 GTTCGGGCATGTTGGCAGTACGACTGCCAGCAGGGGTGAGCTCTTCTCTTCTGGAACCTCTATAAAGCT
 CCAATACTGTTGGCACTAGTGGCAGGAGAAGCTGCTGGTATCATGGAAAACATAAGTGACGATGTGATTG
 TTGGCCGATGCCTGGCCATTCTCAAAGGATTTTTGGTAGCAGTGCAGTACCTCAGCCCAAAGAACTGT
 GGTGTCTCGTTGGCGTGTGATCCCTGGGCTCGGGCTCTTATTCTATGTTGCTGCAGGATCATCTGGA
 AATGACTATGATTAATGGCTCAGCCAATCACTCCTGGCCCTCGATTCCAGGTGCCCCACAGCCGATTC
 CACGACTCTTCTTTCGCGGAGAACATACGATCCGTAACCTACCCAGCCACAGTGCATGGTGTCTGCTGAG
 TGGGCTGCGAGAAGCGGGAAGAATTGCAGACCAGTTTTTGGGGCCATGTATACGCTGCCTCGCCAGGCC
 ACACCAGGTGTTCTGCACAGCAGTCCCCAAGCATG

ACGGTACGCGGCCGCTCGAGCAGAACTCATCTCAGAAGAGGATCTGGCAGCAATGATATCCTGGATT
 ACAAGGATGACGACGATAAGGTTTAA

Protein Sequence: >RC208480 representing NM_015013
 Red=Cloning site Green=Tags(s)

MLSGKAAAAAAAAAATGTEAGPGTAGGSENGSEVAAQPAGLSGPAEVGPGAVGERTPRKKEPPRASP
 PGGLAEPGSGAPQAGPTVVPGSATPMETGIAETPEGRRTSRRKRAKVEYREMDLANLSEDEYYSEE
 RNAKAEKEKKLPPPPQAPPEEENESEPEEPSGVEGAFAQSRLPHDRMTSQEAACFPDIISGPQQTQKVF
 LFI RNRTLQLWLDNPKIQLTFEATLQQLAEPYNSDTVLVHRVHSYLERHGLINFGIYKRIKPLPTKKTGK
 VIIIGSGVSGLAARQLQSFQMDVTLLEARDRVGGRVATFRKGNVYADLGAMVVTGLGGNPMNAVSKQVN
 MELAKIKQKCPLYEANGQAVPKEKDEMVEQEFNRLLLEATSYLSHQLDFNVLNKHKVSLGQALEVVIQLQE
 KHVKDEQIEHWKIVKTQEELKELLNKMVNLKEKIKELHQYKEASEVKPPRDITAEFLVSKHRDLTAL
 CKEYDELAETQGLKEELQLEANPPSDVYLSSRDRQILDWHFANLEFANATPLSTLSLKHWDQDDDFEF
 TGSHLTVRNGYSCVPVALAEGLDIKLNTAVRQVRYTASGCEVI AVNTRSTSQTFFIYKCDAVLCTLPLGVL
 KQPPAVQFVPPLEWKTSAVQRMGFGNLNKVLCFDRVFDPSVNLFGHVGSTTASRGELFLFWNLKYA
 PILLALVAGEAAGIMENISDDVIVGRCLAILKIGIFSSAVPQPKETVVSRRWRADPWARGSYSYAAGSSG
 NDYDLMAQPITPGPSIPGAPQPIPRLFFAGEHTIRNYPATVHGALLSGLREAGRIADQFLGAMYTLPRQA
 TPGVPAQQSPSM

TRTRPLEQKLISEEDLAANDILDYKDDDDKV

Chromatograms: https://cdn.origene.com/chromatograms/mg2657_e01.zip

Restriction Sites: SgfI-MluI

Cloning Scheme:

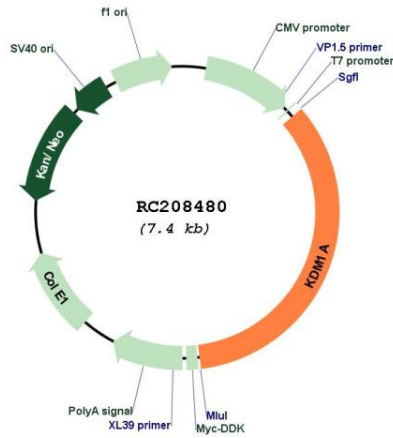
Cloning sites used for ORF Shuttling:



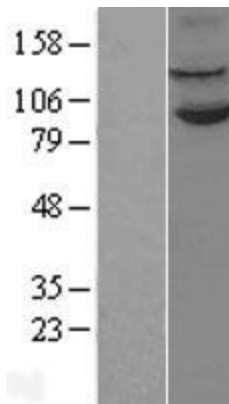
* The last codon before the Stop codon of the ORF

ACCN:	NM_015013
ORF Size:	2556 bp
OTI Disclaimer:	The molecular sequence of this clone aligns with the gene accession number as a point of reference only. However, individual transcript sequences of the same gene can differ through naturally occurring variations (e.g. polymorphisms), each with its own valid existence. This clone is substantially in agreement with the reference, but a complete review of all prevailing variants is recommended prior to use. More info
OTI Annotation:	This clone was engineered to express the complete ORF with an expression tag. Expression varies depending on the nature of the gene.
Components:	The ORF clone is ion-exchange column purified and shipped in a 2D barcoded Matrix tube containing 10ug of transfection-ready, dried plasmid DNA (reconstitute with 100 ul of water).
Reconstitution Method:	<ol style="list-style-type: none">1. Centrifuge at 5,000xg for 5min.2. Carefully open the tube and add 100ul of sterile water to dissolve the DNA.3. Close the tube and incubate for 10 minutes at room temperature.4. Briefly vortex the tube and then do a quick spin (less than 5000xg) to concentrate the liquid at the bottom.5. Store the suspended plasmid at -20°C. The DNA is stable for at least one year from date of shipping when stored at -20°C.
RefSeq:	NM_015013.4
RefSeq Size:	3030 bp
RefSeq ORF:	2559 bp
Locus ID:	23028
UniProt ID:	O60341
Cytogenetics:	1p36.12
Protein Families:	Druggable Genome, Transcription Factors
MW:	92.7 kDa
Gene Summary:	This gene encodes a nuclear protein containing a SWIRM domain, a FAD-binding motif, and an amine oxidase domain. This protein is a component of several histone deacetylase complexes, though it silences genes by functioning as a histone demethylase. Alternative splicing results in multiple transcript variants. [provided by RefSeq, Apr 2009]

Product images:



Circular map for RC208480



Western blot validation of overexpression lysate (Cat# [LY402400]) using anti-DDK antibody (Cat# [TA50011-100]). Left: Cell lysates from untransfected HEK293T cells; Right: Cell lysates from HEK293T cells transfected with RC208480 using transfection reagent MegaTran 2.0 (Cat# [TT210002]).