

## Product datasheet for RC208472

### PLAC1L (OOSP2) (NM\_173801) Human Tagged ORF Clone

#### Product data:

Product Type:	Expression Plasmids
Product Name:	PLAC1L (OOSP2) (NM_173801) Human Tagged ORF Clone
Tag:	Myc-DDK
Symbol:	PLAC1L
Synonyms:	OOSP2A; PLAC1L; TMEM122
Mammalian Cell Selection:	Neomycin
Vector:	pCMV6-Entry (PS100001)
E. coli Selection:	Kanamycin (25 ug/mL)
ORF Nucleotide Sequence:	>RC208472 ORF sequence Red=Cloning site Blue=ORF Green=Tags(s)

TTTTGTAATACGACTCACTATAGGGCGGCCGGAATTCGTCGACTGGATCCGGTACCGAGGAGATCTGCC  
 GCCGCGATCGCC

ATGGCGTTAGAAGTCTTGATGCTCCTCGCTGTCTTGATTGGACCGGTGCTGAGAACCTCCATGTGAAAA  
 TAAGTTGCTCTGGACTGGTTGATGGTCTCAGTTATCCAGTTGCAGAAAGCAGAAATCTGTATATATT  
 TGCGGATGAATTACATCTGGGAATGGGCTGCCCTGCAAAATCGGATACATACATATGTATATGAGTTTATA  
 TATCTTGTTCTGATTGTGGCATCAGGACAAGGGTAGTTTCTGAGGAACTCTCCTTTTTCAAACCGAGC  
 TGTACTTTACCCAAGGAATATAGATCATGACCCTCAGGAAATCCATTTGGAGTGTCCACCTCTAGGAA  
 ATCAGTGTGGCTTACACCAGTTTCTACTGAGAATGAAATAAAATTGGATCCTAGTCCTTTTATTGCTGAC  
 TTTCAGACAACAGCAGAAGAGTTAGGATTATTATCTTCTAGTCCAACTTGCTC

ACGCGTACGCGGCCGCTCGAGCAGAACTCATCTCAGAAGAGGATCTGGCAGCAAATGATATCCTGGATT  
 ACAAGGATGACGACGATAAGGTTTAA

Protein Sequence:	>RC208472 protein sequence Red=Cloning site Green=Tags(s)
-------------------	--

MALEVLMLLAVLIWTGAENLHVKISCSLDWLMVSVIPVAESRNL YIFADELHLGMGCPANRIHTYVVEFI  
 YLVRDCGIRTRVSEETLLFQTELYFTPRNIDHDPQEIHLECSTSRKSVWLTPVSTENEIKLDPSPIAD  
 FQTTAEELGLLSSPNLL

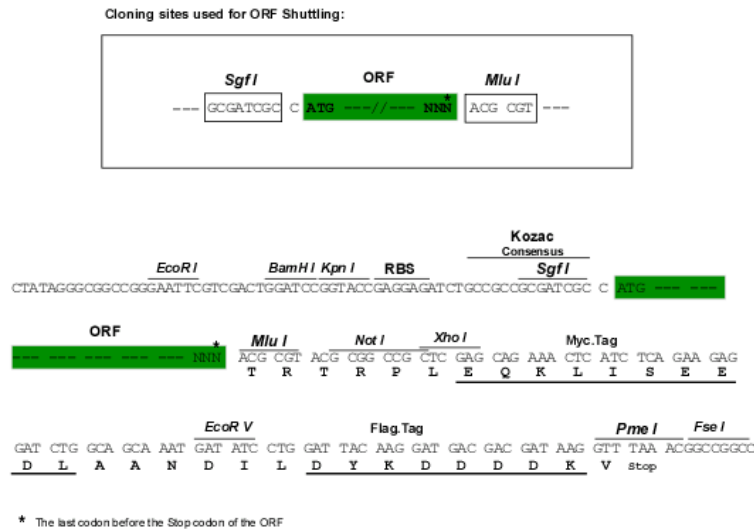
TRTRPLEQKLISEEDLAANDILDYKDDDDKV

Chromatograms:	<a href="https://cdn.origene.com/chromatograms/mk6126_d03.zip">https://cdn.origene.com/chromatograms/mk6126_d03.zip</a>
----------------	---


[View online »](#)

**Restriction Sites:** SgfI-MluI

**Cloning Scheme:**



**ACCN:** NM\_173801

**ORF Size:** 474 bp

**OTI Disclaimer:** The molecular sequence of this clone aligns with the gene accession number as a point of reference only. However, individual transcript sequences of the same gene can differ through naturally occurring variations (e.g. polymorphisms), each with its own valid existence. This clone is substantially in agreement with the reference, but a complete review of all prevailing variants is recommended prior to use. [More info](#)

**OTI Annotation:** This clone was engineered to express the complete ORF with an expression tag. Expression varies depending on the nature of the gene.

**Components:** The ORF clone is ion-exchange column purified and shipped in a 2D barcoded Matrix tube containing 10ug of transfection-ready, dried plasmid DNA (reconstitute with 100 ul of water).

**Reconstitution Method:**

1. Centrifuge at 5,000xg for 5min.
2. Carefully open the tube and add 100ul of sterile water to dissolve the DNA.
3. Close the tube and incubate for 10 minutes at room temperature.
4. Briefly vortex the tube and then do a quick spin (less than 5000xg) to concentrate the liquid at the bottom.
5. Store the suspended plasmid at -20°C. The DNA is stable for at least one year from date of shipping when stored at -20°C.

**Note:** Plasmids are not sterile. For experiments where strict sterility is required, filtration with 0.22um filter is required.

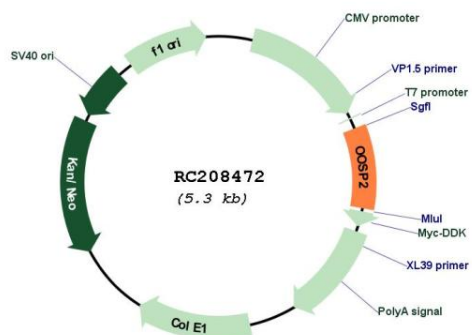
**RefSeq:** [NM\\_173801.5](#)

**RefSeq Size:** 1646 bp

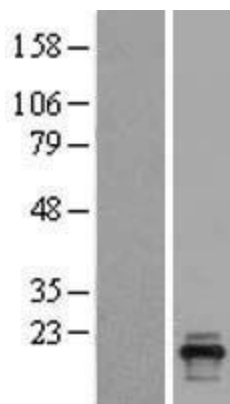
**RefSeq ORF:** 477 bp

**Locus ID:** 219990  
**UniProt ID:** [Q86WS3](#)  
**Cytogenetics:** 11q12.1  
**Protein Families:** Secreted Protein  
**MW:** 18 kDa

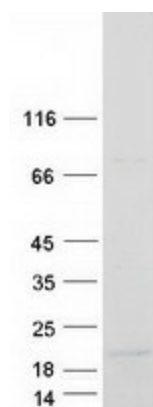
### Product images:



Circular map for RC208472



Western blot validation of overexpression lysate (Cat# [LY403561]) using anti-DDK antibody (Cat# [TA50011-100]). Left: Cell lysates from untransfected HEK293T cells; Right: Cell lysates from HEK293T cells transfected with RC208472 using transfection reagent MegaTran 2.0 (Cat# [TT210002]).



Coomassie blue staining of purified OOSP2 protein (Cat# [TP308472]). The protein was produced from HEK293T cells transfected with OOSP2 cDNA clone (Cat# RC208472) using MegaTran 2.0 (Cat# [TT210002]).