

## Product datasheet for **RC208469**

### Upstream Binding Protein 1 (UBP1) (NM\_014517) Human Tagged ORF Clone

#### Product data:

Product Type:	Expression Plasmids
Product Name:	Upstream Binding Protein 1 (UBP1) (NM_014517) Human Tagged ORF Clone
Tag:	Myc-DDK
Symbol:	Upstream Binding Protein 1
Synonyms:	LBP-1a; LBP-1B; LBP1A; LBP1B
Mammalian Cell Selection:	Neomycin
Vector:	pCMV6-Entry (PS100001)
E. coli Selection:	Kanamycin (25 ug/mL)



[View online »](#)

**ORF Nucleotide Sequence:**

>RC208469 ORF sequence  
 Red=Cloning site Blue=ORF Green=Tags(s)

TTTTGTAATACGACTCACTATAGGGCGGCCGGGAATTCGTCGACTGGATCCGGTACCGAGGAGATCTGCC  
 GCC**CGCATCGCC**

ATGGCCTGGGTGCTCAAGATGGACGAGGTGATCGAGTCCGGGCTGGTGCACGACTTCGACGCCAGCCTCT  
 CGGGCATCGGGCAGGAAGTGGGCCCGGGCCTTACAGCATGAGTATGTCTTGGCATTGCCATTTTCAA  
 GCAGGAAGATTCCAGCCTTCCATTGGATGGTGAACAGAGCACCCACCCTTTCAGTATGTGATGTGTGCT  
 GCAACGTCACCAGCAGTAAACTGCATGATGAAACGCTTACTTATTTGAACCAAGGTCAGTCATATGAAA  
 TTCGGATGCTGGATAATCGGAAATGGGTGATGCCTGAGATCAATGGAAAATTAGTAAAGAGCATCAT  
 AAGGGTTGTATTCCATGACAGACGGCTACAATACACAGAGCATCAGCAACTTGAAGGATGGAAGTGAAT  
 CGCCCAGGAGACAGACTTCTTGATTTAGATATTCCAATGTCTGTGGGAATAATTGACACAAGGACGAATC  
 CAAGCCAGTTAAATGCGGTTGAATTTCTGTGGGACCCAGCAAAACGCACCTCTGCTTTCATTAGGTACA  
 CTGCATCAGCACAGAATTTACTCCAGGAAGCAGGAGGTGAAAAGGGAGTGCCCTTTAGGATCCAGGTT  
 GAGCCTTTAAGCAGAATGAAAATGGAGAATACACAGATCATCTACACTAGCTAGCTGCCAAATCAAAG  
 TTTTAAAGCCTAAAGGTGCAGACAGGAAACAAAAAAGTACCCGAGAGAAGATGGAGAAGAGAACAGCTCA  
 TGAAAAAGAAAAGTATCAGCCGCTCATGATACCAATCCTCACAGAGATGAGGCTTGAGCCTATAATT  
 GAAGATGCAGTTGAACATGAGCAGAAAAAGTCCAGCAAGCGGACTTTGCCAGCAGACTACGGTGATTCTC  
 TGGCAAAGCGAGGCGATTGTTCTCCGTGGCCCGATGCCCCACAGCCTATGTGAATAACAGCCCTCCCC  
 AGCGCCCACTTTCACCTCCCCACAGCAGACACTTGCAGTGTCCAGACAGCAATTTCTTCCCCAAAT  
 CATCAGGGAGATGGAGCTTACAGACCTCTGGTGAACAAATTCAGCCTTACAGTACGATCCAGGAAACAC  
 AGCAATGGCTGCTCAAAAACAGATTCTCTTCTACACAAGACTGTTCTTAATTTTTCAGGTGCCGACTT  
 ATTAATAACTGACAAAGGAGGATTTAGTTCAAATTTGTGGTGCAGCCGATGGAATTCGGCTCTATAATTCA  
 CTGAAGTCAAGGTCGGTTAGACCCGTTTAAACATCTATGTCTGCCGGGAGCAGCCAAGCAGCACAGTGC  
 TGCAAGGGCAGCAGCAAGCTGCAAGCAGTGAAGCGAGAATGGCAGTGGGGCACCCATGTTTATCATGC  
 AATCTACTTGAAGAAAATGATTGCCTCAGAAGTTGCTCGAAAACCTGCGCTGGTGTAAATATCCCTCTC  
 CACCAAATTAATCAGGTTTACAGACAGGGTCCCACCGGATTACATTCTTGTAGTGATCAGATGGTTC  
 AGAATTTTCAAGATGAGAGTTGTTTTTATTCTCCACAGTGAAGCTGAAAGTAGTGATGGCATCCACAT  
 AATTTTGAAG

**ACGCGT**ACGCGGCCGCTCGAGCAGAAACTCATCTCAGAAGAGGATCTGGCAGCAAATGATATCCTGGATT  
 ACAAGGATGACGACGATAAGGTTTAA

**Protein Sequence:**

>RC208469 protein sequence  
 Red=Cloning site Green=Tags(s)

MAWVLMDEVIESGLVHDFDASLSGIGQELGAGAYSMSDVLALPIFKQEDSSLPLDGETEHPFPQYVMCA  
 ATSPAVKLHDETLTYLNQGQSYEIRMLDNRKMGDMPEINGKLVKSIIRVVFHRRRLQYTEHQQLEGWKWN  
 RPDGDRLLDLIPMSVGIIDTRTNPSQLNAVEFLWDPKRTSAFIQVHCISTEFTPRKHGEGKVPFRIQV  
 DAFKQENGEYTDHLHSASCQIKVFKPKGADRKQKTDREKMEKRTAHEKEKYQPSYDTTILTEMRLPII  
 EDAVEHEQKSSKRTLPAHYGDSLAKRGSCSPWDAPTAYVNNSPSPAPTFTSPQQSTCSVPDSNSSSPN  
 HQGDGASQTSGEIQPSATIQTQQWLLKNRFSYTRLSNFSGADLLKLTEDLVQICGAADGIRLYNS  
 LKRSRVRPRLTIYVCREQPSSTVLQGGQQAASSASENGSGAPYVYHAIYLEEMIASVARKLALVFNIP  
 HQINQVYRQGPITIHILVSDQMVQNFQDESCFLFSTVKAESSDGIHIIK

**TR**TRPLEQKLISEEDLAANDILDYKDDDDKV

**Chromatograms:**

[https://cdn.origene.com/chromatograms/mk6513\\_c01.zip](https://cdn.origene.com/chromatograms/mk6513_c01.zip)

**Restriction Sites:**

Sgfl-MluI

**Cloning Scheme:**

**ACCN:** NM\_014517

**ORF Size:** 1620 bp

**OTI Disclaimer:** The molecular sequence of this clone aligns with the gene accession number as a point of reference only. However, individual transcript sequences of the same gene can differ through naturally occurring variations (e.g. polymorphisms), each with its own valid existence. This clone is substantially in agreement with the reference, but a complete review of all prevailing variants is recommended prior to use. [More info](#)

**OTI Annotation:** This clone was engineered to express the complete ORF with an expression tag. Expression varies depending on the nature of the gene.

**Components:** The ORF clone is ion-exchange column purified and shipped in a 2D barcoded Matrix tube containing 10ug of transfection-ready, dried plasmid DNA (reconstitute with 100 ul of water).

- Reconstitution Method:**
1. Centrifuge at 5,000xg for 5min.
  2. Carefully open the tube and add 100ul of sterile water to dissolve the DNA.
  3. Close the tube and incubate for 10 minutes at room temperature.
  4. Briefly vortex the tube and then do a quick spin (less than 5000xg) to concentrate the liquid at the bottom.
  5. Store the suspended plasmid at -20°C. The DNA is stable for at least one year from date of shipping when stored at -20°C.

**RefSeq:** [NM\\_014517.3](#)
**RefSeq Size:** 4162 bp

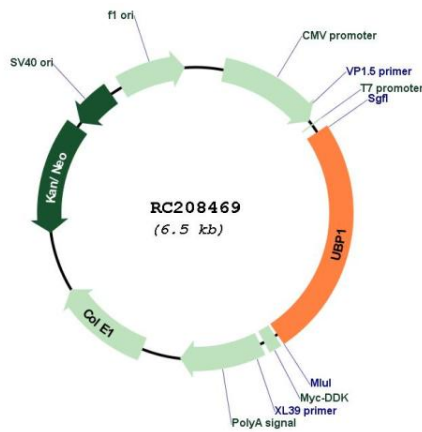
**RefSeq ORF:** 1623 bp

**Locus ID:** 7342

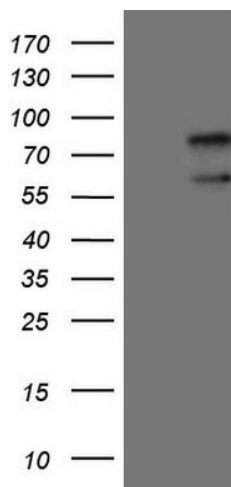
**UniProt ID:** [Q9NZI7](#)

**Cytogenetics:** 3p22.3  
**Domains:** CP2  
**Protein Families:** Transcription Factors  
**MW:** 60.5 kDa  
**Gene Summary:** Functions as a transcriptional activator in a promoter context-dependent manner. Modulates the placental expression of CYP11A1. Involved in regulation of the alpha-globin gene in erythroid cells. Activation of the alpha-globin promoter in erythroid cells is via synergistic interaction with TFCP2 (By similarity). Involved in regulation of the alpha-globin gene in erythroid cells. Binds strongly to sequences around the HIV-1 initiation site and weakly over the TATA-box. Represses HIV-1 transcription by inhibiting the binding of TFIID to the TATA-box.[UniProtKB/Swiss-Prot Function]

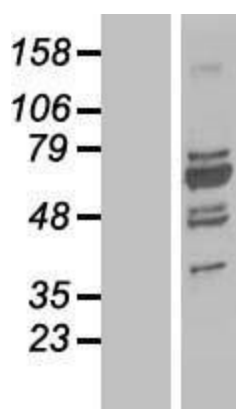
### Product images:



Circular map for RC208469



HEK293T cells were transfected with the pCMV6-ENTRY control (Cat# [PS100001], Left lane) or pCMV6-ENTRY UBP1 (Cat# RC208469, Right lane) cDNA for 48 hrs and lysed. Equivalent amounts of cell lysates (5 ug per lane) were separated by SDS-PAGE and immunoblotted with anti-UBP1 (Cat# [TA808853])(1:2000). Positive lysates [LY415219] (100ug) and [LC415219] (20ug) can be purchased separately from OriGene.



Western blot validation of overexpression lysate (Cat# [LY426903]) using anti-DDK antibody (Cat# [TA50011-100]). Left: Cell lysates from untransfected HEK293T cells; Right: Cell lysates from HEK293T cells transfected with [RC225928] using transfection reagent MegaTran 2.0 (Cat# [TT210002]).