

Product datasheet for **RC208468**

C3orf59 (MB21D2) (NM_178496) Human Tagged ORF Clone

Product data:

Product Type:	Expression Plasmids
Product Name:	C3orf59 (MB21D2) (NM_178496) Human Tagged ORF Clone
Tag:	Myc-DDK
Symbol:	C3orf59
Synonyms:	C3orf59
Mammalian Cell Selection:	Neomycin
Vector:	pCMV6-Entry (PS100001)
E. coli Selection:	Kanamycin (25 ug/mL)



[View online »](#)

ORF Nucleotide Sequence:

>RC208468 ORF sequence
 Red=Cloning site Blue=ORF Green=Tags(s)

TTTTGTAATACGACTCACTATAGGGCGGCCGGAATTCGTCGACTGGATCCGGTACCGAGGAGATCTGCC
 GCC**CGCATCGCC**

ATGGCGGCTCCCACCGCCAACAAGGCAGCCTCCCTGGGCTGTAACAACAAGCCTGCGTTCCTGGAGCTGG
 ATTTTCAGGTCGGGAGCTCGGGTGGAGGAATTGAACAAACTCATCCAAGAATTTACGAAGCACGACCAGCG
 GGAATACGACGACAGAGAGCGCTGGAGATTACACAGCCAAGGATTTTCATCTTTTCCATGCTGGGAATG
 GTGCAAAAGCTGGACAAAAGCTTCCAGTGGCTAATGAATACCTGTTGCTCTCTGGAGGTGTCGGGAAG
 GCGTGGTGGACCTGGACTTAGATGAGCTTAATGTCTATGCCCGGGTACTGACTATGATATGGACTTTAC
 CCTTTGGTGCCAGCCCTCAAGCTGCATGACCGTAATCAGCCTGTGACTCGACATGCGCCACTCAGCC
 TTGTGCCACTCTGGCTGAGCCTTCGGCTCTTTGATGAGGGGACAATCAGTAAATGGAAAGACTGCTGCA
 CCATTGTAGATCACATCAATGGTCCACCAACTACTTCTTCTCACCTACCAAAGTGGCTGACTGGTTCTA
 TGACTCTATCAGCATTGCCTATCAGAAATACAGAAGAAACCCAGCGAGGGATGCCAAAGTAGAAAAG
 GTGGAAAAAATGGACCATCATCTCCATCATTCTGGGTGTAGGGAGTAGTCGCATGTTGTATGATATTG
 TCCTGTGGTATCTTTCAAAGGTTGGCCTGCAGTGGCCAGAGCTGGCTCATGGAGAACCACTTTTGGGA
 TGGGAAGATTACTGAGGAAGAGGTATCAGTGGGTTTTACTTGGTGCCTGCTTCTACAAGGTAAG
 AAGGACAATGAATGGCGGCTGTCCTTTGCCAGGAGCGAGGTGCAGTTGAAGAAGTGCATCTCCAGCAGCC
 TCATGCAGGCCTATCAGGCTGCAAAGCCATCATCATTAACTGCTGTCCCGGCCAAGGCTATTAGCCC
 CTATCACCTGCGGAGCATGATGCTCTGGGCTGCGACAGACTTCTGCCAACTACTTGGCTCAAGAAGAC
 TATGCAGCCCACTTTTGGCTGGGCTCATCGATGACCTGCAACTGTCTGGTCAACAAGATGTCCCCCA
 ATTATTTTATCCCTCAGTGCAACATGCTGGAACATCTGTCTGAGGAGACAGTCATGCTTCCAGCCGGAA
 GCTGTCTCTGTGCGCTCAGACCCGCGAGCACTTGGCACCAGCATTGAGCATGTCAAGGCAGCCAAAC
 CGGCTGACACTGGAGCTCCAGAGCGAGGTAGCACCACAGCATCCCCTCTCCACAGTCTGACGGAGGGG
 ACCCCAACAGCCTGATGACCGTTTGGCAAAAAACTGCAGCAGTAGTGACTGAGAACCAGGAAAGTC
 AATCTCTGCTTTATCAATCCTGACGATGTCACAAGGCCCAATTTAGAAATTGATGACAAAATTTTC

ACGCGTACGCGGCCGCTCGAGCAGAAACTCATCTCAGAAGAGGATCTGGCAGCAAATGATATCCTGGATT
 ACAAGGATGACGACGATAAGGTTTAA

Protein Sequence:

>RC208468 protein sequence
 Red=Cloning site Green=Tags(s)

MAAPTANKAASLGCNNKPAFPELDFRSGARVEELNKLIQEFTKHDQREYDDQRALEIHTAKDFIFSMLGM
 VQKLDQKLPVANEYLLL SGGVREGVVDLDELNVYARGTDYDMDFLLVPALKLHDRNQPVTLDMRHSAL
 CHSWLSLRLFDEGTISKWKDCCTIVDHINGATNYFFSPTKVADWFYDSISIVLSEIQKPKQRMGPKVEK
 VEKNGTIIISILGVGSSRMLYDIPVVSFKGWPAVAQSWLMENHFWDGKIIEEVIISGFYLPACSYKGG
 KDNEWRLSFARSEVQLKKCISSSLMQAYQACKAIIKLLSRPKAISPYHLRSMMLWACDRLPANYLAQED
 YAAHLLGLIDDLQHCLVNKMCNPYFIPQCNMLEHLSEETVMLHARKLSSVRSPPAEHLRTAIEHVKAAN
 RLTLLELQRRGSTTSIPSPQSDGGDPNPDDRLAKKLQQLVTENPGKISISVFINPDDVTRPHFRIDDKFF

TRTRPLEQKLISEEDLAANDILDYKDDDDKV

Chromatograms:

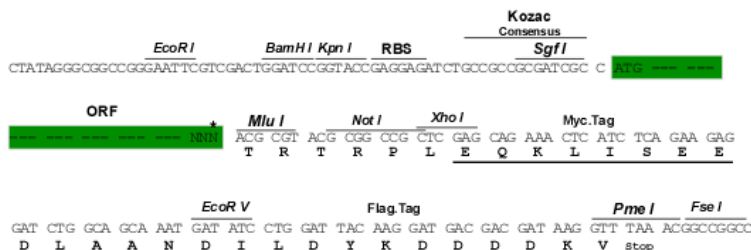
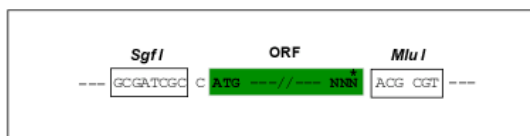
https://cdn.origene.com/chromatograms/mk6346_d05.zip

Restriction Sites:

Sgfl-Mlul

Cloning Scheme:

Cloning sites used for ORF Shuttling:



* The last codon before the Stop codon of the ORF

ACCN: NM_178496

ORF Size: 1467 bp

OTI Disclaimer: The molecular sequence of this clone aligns with the gene accession number as a point of reference only. However, individual transcript sequences of the same gene can differ through naturally occurring variations (e.g. polymorphisms), each with its own valid existence. This clone is substantially in agreement with the reference, but a complete review of all prevailing variants is recommended prior to use. [More info](#)

OTI Annotation: This clone was engineered to express the complete ORF with an expression tag. Expression varies depending on the nature of the gene.

Components: The ORF clone is ion-exchange column purified and shipped in a 2D barcoded Matrix tube containing 10ug of transfection-ready, dried plasmid DNA (reconstitute with 100 ul of water).

Reconstitution Method:

1. Centrifuge at 5,000xg for 5min.
2. Carefully open the tube and add 100ul of sterile water to dissolve the DNA.
3. Close the tube and incubate for 10 minutes at room temperature.
4. Briefly vortex the tube and then do a quick spin (less than 5000xg) to concentrate the liquid at the bottom.
5. Store the suspended plasmid at -20°C. The DNA is stable for at least one year from date of shipping when stored at -20°C.

RefSeq: [NM_178496.2](#), [NP_848591.1](#)
RefSeq Size: 3388 bp

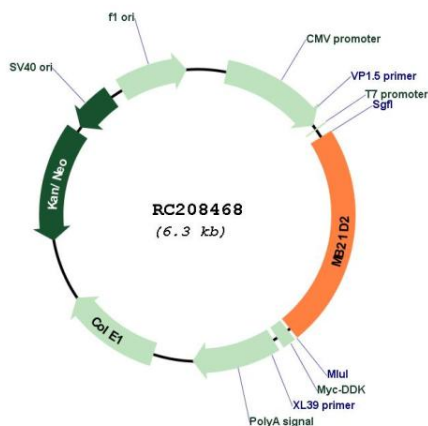
RefSeq ORF: 1476 bp

Locus ID: 151963

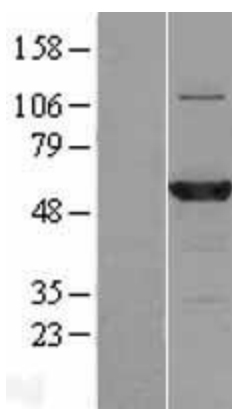
UniProt ID: [Q8IYB1](#)
Cytogenetics: 3q29

MW: 55.5 kDa

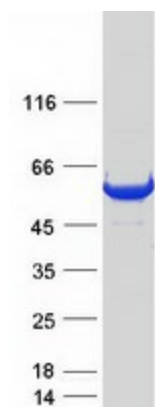
Product images:



Circular map for RC208468



Western blot validation of overexpression lysate (Cat# [LY405889]) using anti-DDK antibody (Cat# [TA50011-100]). Left: Cell lysates from untransfected HEK293T cells; Right: Cell lysates from HEK293T cells transfected with RC208468 using transfection reagent MegaTran 2.0 (Cat# [TT210002]).



Coomassie blue staining of purified MB21D2 protein (Cat# [TP308468]). The protein was produced from HEK293T cells transfected with MB21D2 cDNA clone (Cat# RC208468) using MegaTran 2.0 (Cat# [TT210002]).