

## Product datasheet for **RC208465**

### **CELF3 (NM\_007185) Human Tagged ORF Clone**

#### **Product data:**

Product Type:	Expression Plasmids
Product Name:	CELF3 (NM_007185) Human Tagged ORF Clone
Tag:	Myc-DDK
Symbol:	CELF3
Synonyms:	BRUNOL1; CAGH4; ERDA4; ETR-1; TNRC4
Mammalian Cell Selection:	Neomycin
Vector:	pCMV6-Entry (PS100001)
E. coli Selection:	Kanamycin (25 ug/mL)



[View online »](#)

**ORF Nucleotide Sequence:**

>RC208465 ORF sequence  
 Red=Cloning site Blue=ORF Green=Tags(s)

TTTTGTAATACGACTCACTATAGGGCGGCCGGGAATTCGTCGACTGGATCCGGTACCGAGGAGATCTGCC  
 GCC**CGATCGCC**

ATGAAGGAGCCGGATGCCATCAAGCTGTTTGTGGGCAGATCCCAGGCACCTGGAGGAGAAGGACCTGA  
 AGCCCATCTTCGAACAGTTTGGTCGGATCTTTAGCTGACTGTCATCAAGGACAAGTACACCGGGCTGCA  
 CAAGGGATGTGCCTTCCTGACATACTGTGCCCGGATTACGCCCTGAAGGCCAGAGCGCCTGCACGAA  
 CAGAAGACGCTTCCAGGGATGAACAGGCCGATCCAGGTCAAGCCAGCCGACAGCGAGAGCCGAGGAGAAG  
 ACCGGAAGCTCTTTGTGGGGATGCTAGGGAAGCAGCAGACAGATGAGGACGTCCGGAAGATGTTTGAACC  
 CTTCCGGGACCATCGACGAGTGCCTGTGCTCCGGGGCCAGATGGCACCAGCAAAGGCTGCGCCTTCGTG  
 AAGTTCAGACCCACGCTGAGGCCAAGGCGCCATCAACACCCTTCACAGCAGCCGGACCCTGCCAGGTG  
 CCTCGTCCAGCCTGGTGGTGAAGTTTGTGACTGAGAAGGAGCGAGGTCTCCGCCGATGCAGCAGGT  
 GGCCACCCAGTTGGGCATGTTCCAGCCCATCACCTCCAGTTTGGAGCCTACAGCGCCTACACCCAGGCC  
 CTGATGCAGCAGCAGGCCGCCCTGGTAGCGGCTCACAGTGCCTACCTCAGCCCCATGGCCACCATGGCTG  
 CCGTGCAGATGCAGCACATGGCTGCCATCAATGCCAATGGCCTCATCGCCACCCCATCACCCATCCTC  
 AGGAACCAGCACCCCTCCTGCCATCGTGCACGCCTGTCTCTGCCATTCCGGCTGCCCTGGGCGTCAAC  
 GGCTACAGCCAGGTGCCACCCAGCCACTGGGCAGCCTGCCCTGATGCTCTGTATCCCAACGGGGTTC  
 ACCCCTACCCAGCCAGAGCCCCGCGGCCCCCGTGGACCCCTGCAGCAGGCCTACGCGGGGATGCAGCA  
 CTACACAGCCTACCCAGCAGCCTACAGCCTGGTGCACCTGCGTTCGCCAGCCTCCAGCCCTGGTGC  
 CAGCAGCCCCACCACCCTCAACAGCAGCAGCAGCAGCAGCAGCAACAGCAGCAGCAGCAAAAGAG  
 AAGGCCCTGATGGCTGCAACATCTTCACTACCACCTGCCAGGAGTTCACTGACTCAGAGATCCTCCA  
 GATGTTTGTCCCTTTGGCCACGTCATCTCAGCCAAAGTCTTTGTTGACCGAGCCACCAATCAAAGCAAA  
 TGTTTTGGCTTTGTGAGTTTCGACAATCCGGCCAGTGCCAGGCTGCCATCCAGGCCATGAATGGCTTCC  
 AGATCGGCATGAAGCGCCTCAAAGTCCAGCTAAAGCGGCCTAAGGATGCCAACCGGCCCTAC

**ACGCGT**ACGCGGCCGCTCGAGCAGAACTCATCTCAGAAGAGGATCTGGCAGCAAATGATATCCTGGATT  
 ACAAGGATGACGACGATAAGGTTTAA

**Protein Sequence:**

>RC208465 protein sequence  
 Red=Cloning site Green=Tags(s)

MKEPDAIKLFVQGIPRHLEEKDLKPIFEQFGRIFELTVIKDKYTGLHKGCAFLTYCARDSALKAQSALHE  
 QKTLPGMNRPIQKPADSESRGEDRKL FVGM LGKQQTDEDVVRKMFEPFGTIDECTVLRGPDGTSKGCFAV  
 KFQTHAEAKAAINTLHSSRTLPGASSL VVKFADTEKERGLRRMQVATQLGMFSPITLQFGAYSAYTQA  
 LMQQQAALVAHSAYLSPMATMAAVQMQHMAAINANGLIATPITPSSGTSTPPAIAATPVAIPAALGVN  
 GYSQVPTQPTGQPAPDALYPNGVHPYPAQSPAAPVDPLQAYAGMQHYTAYPAAYSLVAPAFPQPPALVA  
 QQPPPPPPQQQQQQQQQQQQREGPDGCNIFIYHLPQEF TDSEILQMFVPGHVISAKVFDVDRATNQSK  
 CFGFVSFDNPASAQAAIQAMNGFQIGMKRLKVQLKRPKDANRPY

**TR**TRPLEQKLISEEDLAANDILDYKDDDDKV

**Chromatograms:**

[https://cdn.origene.com/chromatograms/mk6364\\_d06.zip](https://cdn.origene.com/chromatograms/mk6364_d06.zip)

**Restriction Sites:**

Sgfl-Mlul

**Cloning Scheme:**


**ACCN:** NM\_007185

**ORF Size:** 1035 bp

**OTI Disclaimer:** The molecular sequence of this clone aligns with the gene accession number as a point of reference only. However, individual transcript sequences of the same gene can differ through naturally occurring variations (e.g. polymorphisms), each with its own valid existence. This clone is substantially in agreement with the reference, but a complete review of all prevailing variants is recommended prior to use. [More info](#)

**OTI Annotation:** This clone was engineered to express the complete ORF with an expression tag. Expression varies depending on the nature of the gene.

**Components:** The ORF clone is ion-exchange column purified and shipped in a 2D barcoded Matrix tube containing 10ug of transfection-ready, dried plasmid DNA (reconstitute with 100 ul of water).

- Reconstitution Method:**
1. Centrifuge at 5,000xg for 5min.
  2. Carefully open the tube and add 100ul of sterile water to dissolve the DNA.
  3. Close the tube and incubate for 10 minutes at room temperature.
  4. Briefly vortex the tube and then do a quick spin (less than 5000xg) to concentrate the liquid at the bottom.
  5. Store the suspended plasmid at -20°C. The DNA is stable for at least one year from date of shipping when stored at -20°C.

**RefSeq:** [NM\\_007185.7](#)

**RefSeq Size:** 5615 bp

**RefSeq ORF:** 1398 bp

**Locus ID:** 11189

**UniProt ID:** [Q5SZQ8](#)

**Cytogenetics:** 1q21.3

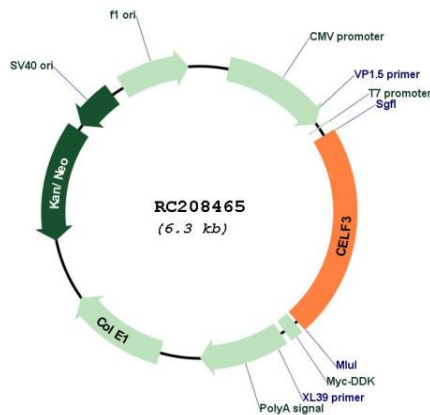
**Domains:** RRM

**Protein Families:** Transcription Factors

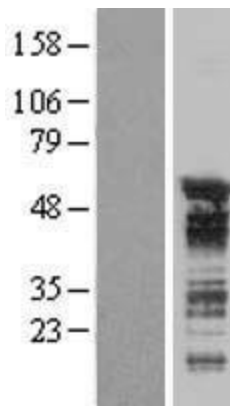
**MW:** 50.5 kDa

**Gene Summary:** Members of the CELF/BRUNOL protein family contain two N-terminal RNA recognition motif (RRM) domains, one C-terminal RRM domain, and a divergent segment of 160-230 aa between the second and third RRM domains. Members of this protein family regulate pre-mRNA alternative splicing and may also be involved in mRNA editing, and translation. Multiple alternatively spliced transcript variants encoding different isoforms have been identified in this gene. [provided by RefSeq, Feb 2010]

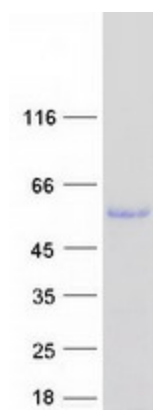
**Product images:**



Circular map for RC208465



Western blot validation of overexpression lysate (Cat# [LY416136]) using anti-DDK antibody (Cat# [TA50011-100]). Left: Cell lysates from untransfected HEK293T cells; Right: Cell lysates from HEK293T cells transfected with RC208465 using transfection reagent MegaTran 2.0 (Cat# [TT210002]).



Coomassie blue staining of purified CELF3 protein (Cat# [TP308465]). The protein was produced from HEK293T cells transfected with CELF3 cDNA clone (Cat# RC208465) using MegaTran 2.0 (Cat# [TT210002]).