

Product datasheet for **RC208463**

WAVE 1 (WASF1) (NM_001024934) Human Tagged ORF Clone

Product data:

Product Type:	Expression Plasmids
Product Name:	WAVE 1 (WASF1) (NM_001024934) Human Tagged ORF Clone
Tag:	Myc-DDK
Symbol:	WAVE 1
Synonyms:	NEDALVS; SCAR1; WAVE; WAVE1
Mammalian Cell Selection:	Neomycin
Vector:	pCMV6-Entry (PS100001)
E. coli Selection:	Kanamycin (25 ug/mL)



[View online »](#)

ORF Nucleotide Sequence:

>RC208463 ORF sequence
 Red=Cloning site Blue=ORF Green=Tags(s)

TTTTGTAATACGACTCACTATAGGGCGGCCGGAATTCGTCGACTGGATCCGGTACCGAGGAGATCTGCC
 GCC**CGGATCGCC**

ATGCCCTAGTGAAAAGAACATCGATCCTAGGCCTTGTGCCACACAGCACTGCCTAGAGGCATTAAGA
 ATGAACTGGAATGTGAACCAATATTTCCCTGGCAAATAAATTAGACAATAAGTAGCCTAAGTAAATA
 TGCTGAAGATATATTTGGAGAATTATTTCAATGAAGCACATAGTTTTTCTTCAGAGTCAACTCATTGCAA
 GAACGTGTGGACCGTTTATCTGTAGTGTACACAGCTTGATCCAAAGGAAGAAGATTGCTTTGCAAG
 ATATAACAATGAGGAAAGCTTTCCGAAGTTCTACAATTCAAGACCAGCAGCTTTTCGATCGCAAGACTTT
 GCCTATTCATTACAGGAGACGTACGATGTTTGTGAACAGCCTCCACCTCTCAATATACTCACTCCTTAT
 AGAGATGATGGTAAAGAAGGTCTGAAGTTTTATACCAATCCTTCGATTTTCTTTGATCTATGAAAGAAA
 AAATGTTGCAAGATACAGAGGATAAGAGGAAGGAAAAGAGGAAGCAGAAGCAGAAAAATCTAGATCGTCC
 TCATGAACCAGAAAAAGTGCCAAGAGCACCTCATGACAGCGCGGAGAATGGCAGAAGCTGGCCCAAGGT
 CCAGAGCTGGCTGAAGATGATGCTAATCTTACATAAGCATATTGAAGTTGCTAATGGCCAGCCTCTC
 ATTTTGAACAAGACCTCAGACATACGTGGATCATATGGATGGATCTTACTCACTTTCTGCCTTGCCATT
 TAGTCAGATGAGTGAAGTCTGACTAGAGCTGAGGAAAGGGTATTAGTCAGACCACATGAACCACCTCCA
 CCTCCACCAATGCATGGAGCAGGAGATGCAAAACCGATACCCACCTGTATCAGTTCTGCTACAGGTTTGA
 TAGAAAATCGCCCTCAGTACCAGCTACAGGCAGAACCTGTGTTTGTGAGCCCCACTCCCCACCTCC
 TCCACCACCTCTCCATCTGCCTTGTCACTTCTCATTAAAGAGCTTCAATGACTTCAACTCCTCCCCCT
 CCAGTACTCCCCACCTCCACCTCCAGCCACTGCTTTGCAAGCTCCAGCAGTACCACCACCTCCAGCTC
 CTCTTCAGATTGCCCTGGAGTTCTTCCAGCAGCTCCTCCTCAATTGCACCTCCTCTAGTACAGCCCTC
 TCCACCAGTAGCTAGAGCTGCCCCAGTATGTGAGACTGTACCAGTTCATCCACTCCCAAGGTGAAGTT
 CAGGGGCTGCCTCCACCCACCACCGCCTCCTCTGCCTCCACCTGGCATTTCGACCATCATCACCTGTCA
 CAGTTACAGCTCTTGCTCATCTCCCTCTGGGCTACATCCAACCTCCATCTACTGCCCCAGGTCCCCATGT
 TCCATTAATGCCTCCATCTCCTCCATCACAAGTTATACCTGCTTCTGAGCCAAAGCGCCATCCATCAACC
 CTACCTGTAATCAGTGATGCCAGGAGTGTGCTACTGGAAGCAATACGAAAAGGTATTGAGTACGCAAAG
 TAGAAGAGCAGCGTGAACAGGAAGCTAAGCATGAACGCATTGAAAACGATGTTGCCACCATCTGTCTCG
 CCGTATTGCTGTTGAATATAGTGATTCCGAAGATGATTCAGAATTTGATGAAGTAGATTGGTTGGAG

ACGCGTACGCGGCCGCTCGAGCAGAAACTCATCTCAGAAGAGGATCTGGCAGCAAATGATATCCTGGATT
 ACAAGGATGACGACGATAAGGTTTAA

Protein Sequence:

>RC208463 protein sequence
 Red=Cloning site Green=Tags(s)

MPLVKRNIDPRHLCHTALPRGIKNELECVTNISLANIIRQLSSLSKYAEDIFGELFNEAHSFSFRVNSLQ
 ERVDRLSVSVTQLDPKEEELSLQDITMRKAFRSSTIQDQQLFDRKTLPIPLQETYDVCEQPPPLNILTPY
 RDDGKEGLKFYTNPSYFFDLWKEKMLQDTEKREKQKQKQKNDLRPHEPEKVPRAHRRREWQKLAQG
 PELAEDDANLLHKHIEVANGPASHFETRPQTYVDHMDGSYLSALPFSQMSSELLTRAERVLVRPHEPPP
 PPPMHGAGDAKPIPTCISSATGLIENRPQSPATGRTPVFVSPTPPPPPPPLPSALSTSSLRASMTSTPPP
 PVPPPPPPATALQAPAVPPPPAPLQIAPGVLHPAPPPIAPPLVQPSPPVARAAPVCETVPVHPLPQGEV
 QGLPPPPPPPLPPPGIRPSSPVTVTALAHPPSGLHPTPSTAPGPHVPLMPPSPSQVIPASEPKRHPST
 LPVISDARSVLLAIRKGIQLRKVEEQREQEAKHRIENDVATILSRRIAVEYSDEDDSEFDEVDWLE

TRTRPLEQKLISEEDLAANDILDYKDDDDKV

Chromatograms:

https://cdn.origene.com/chromatograms/mk6238_d12.zip

Restriction Sites:

Sgfl-MluI

Cloning Scheme:


ACCN: NM_001024934

ORF Size: 1677 bp

OTI Disclaimer: The molecular sequence of this clone aligns with the gene accession number as a point of reference only. However, individual transcript sequences of the same gene can differ through naturally occurring variations (e.g. polymorphisms), each with its own valid existence. This clone is substantially in agreement with the reference, but a complete review of all prevailing variants is recommended prior to use. [More info](#)

OTI Annotation: This clone was engineered to express the complete ORF with an expression tag. Expression varies depending on the nature of the gene.

Components: The ORF clone is ion-exchange column purified and shipped in a 2D barcoded Matrix tube containing 10ug of transfection-ready, dried plasmid DNA (reconstitute with 100 ul of water).

Reconstitution Method:

1. Centrifuge at 5,000xg for 5min.
2. Carefully open the tube and add 100ul of sterile water to dissolve the DNA.
3. Close the tube and incubate for 10 minutes at room temperature.
4. Briefly vortex the tube and then do a quick spin (less than 5000xg) to concentrate the liquid at the bottom.
5. Store the suspended plasmid at -20°C. The DNA is stable for at least one year from date of shipping when stored at -20°C.

RefSeq: [NM_001024934.1](#), [NP_001020105.1](#)

RefSeq Size: 3132 bp

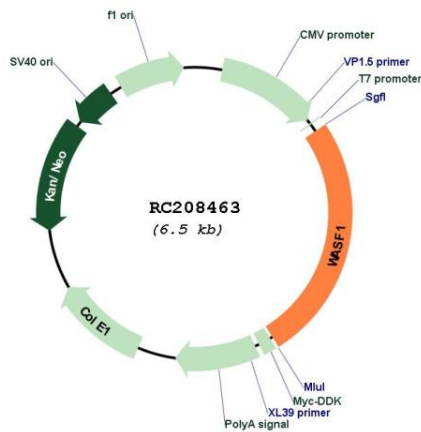
RefSeq ORF: 1680 bp

Locus ID: 8936

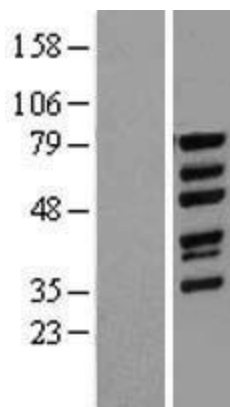
UniProt ID: [Q92558](#)

Cytogenetics:	6q21
Protein Families:	Druggable Genome
Protein Pathways:	Adherens junction, Fc gamma R-mediated phagocytosis, Regulation of actin cytoskeleton
MW:	61.7 kDa
Gene Summary:	The protein encoded by this gene, a member of the Wiskott-Aldrich syndrome protein (WASP)-family, plays a critical role downstream of Rac, a Rho-family small GTPase, in regulating the actin cytoskeleton required for membrane ruffling. It has been shown to associate with an actin nucleation core Arp2/3 complex while enhancing actin polymerization in vitro. Wiskott-Aldrich syndrome is a disease of the immune system, likely due to defects in regulation of actin cytoskeleton. Multiple alternatively spliced transcript variants encoding the same protein have been found for this gene. [provided by RefSeq, Jul 2008]

Product images:



Circular map for RC208463



Western blot validation of overexpression lysate (Cat# [LY418341]) using anti-DDK antibody (Cat# [TA50011-100]). Left: Cell lysates from untransfected HEK293T cells; Right: Cell lysates from HEK293T cells transfected with [RC216977] using transfection reagent MegaTran 2.0 (Cat# [TT210002]).