

## Product datasheet for **RC208457**

### LSM12 (NM\_152344) Human Tagged ORF Clone

#### Product data:

Product Type:	Expression Plasmids
Product Name:	LSM12 (NM_152344) Human Tagged ORF Clone
Tag:	Myc-DDK
Symbol:	LSM12
Synonyms:	PNAS-135
Mammalian Cell Selection:	Neomycin
Vector:	pCMV6-Entry (PS100001)
E. coli Selection:	Kanamycin (25 ug/mL)
ORF Nucleotide Sequence:	>RC208457 ORF sequence Red=Cloning site Blue=ORF Green=Tags(s)

TTTTGTAATACGACTCACTATAGGGCGCCGGGAATTCGTCGACTGGATCCGGTACCGAGGAGATCTGCC  
GCC**CGATCGCC**

ATGGCGGCTCCTCCGGGCGAGTACTTCAGCGTTGGGAGCCAGGTGTCGTGCCGGACGTGCCAGGAGCAGC  
GGCTGCAGGGCGAGGTGGTAGCCTTTGACTACCAATCCAAATGCTGGCTTTAAATGTCCTCTTCCAG  
TGGAAAGCCCAACCATGCAGACATCTTGCTCATAAACTTACAGTATGTTTCAGAAGTGAAATAATTAAT  
GACCGAACAGAAACCCCTCGTCCCCTAGCTTCACTCAATGTTAGTAAGCTTGCCAGCAAAGCACGGACAG  
AGAAGGAGGAGAAGCTGAGCCAGGCCTATGCAATCAGTGTGGTGTCTCTCTAGAGGGCCAGCAGCTCTT  
CCAGACCATTACAAGACCATTAAAGACTGTAAATGGCAAGAAAAAACATCGTAGTCATGGAAGAAGTT  
GTTATTACACCCCATATCAAGTGGAAAAGTAAAGGCAAGAGGGGAGTGAAGTGAAGCATTGACGCA  
AAATAGTTGAAAAACATTTTAGAGACGTGGAAAGCCAAAAGATACTGCAACGTTACAAGCCAGCAACC  
ACAGAAGGAGGCTGCCCTGTCATCC

**ACGCGT**ACGCGGCCGCTCGAGCAGAACTCATCTCAGAAGAGGATCTGGCAGCAAATGATATCCTGGATT  
ACAAGGATGACGACGATAAGGTTTAA

Protein Sequence:	>RC208457 protein sequence Red=Cloning site Green=Tags(s)
-------------------	--

MAAPPGEYFVSGSQVSCRTCQEQLQGEVVAFDYQSKMLALKCPSSSGKPNHADILLINLQYVSEVEIIN  
DRTEPRPLASLNVSKLASKARTEKEEKLQAYAI SAGVSLGQQLFQT IHKTIKDCWKQEKNIIVMEEV  
VITPPYQVENCKGKEGSALSHVRKIVEKHFRDVESQKILQRSQAQPQKEAALSS

**TRTRPLEQKLISEEDLAANDILDYKDDDDKV**

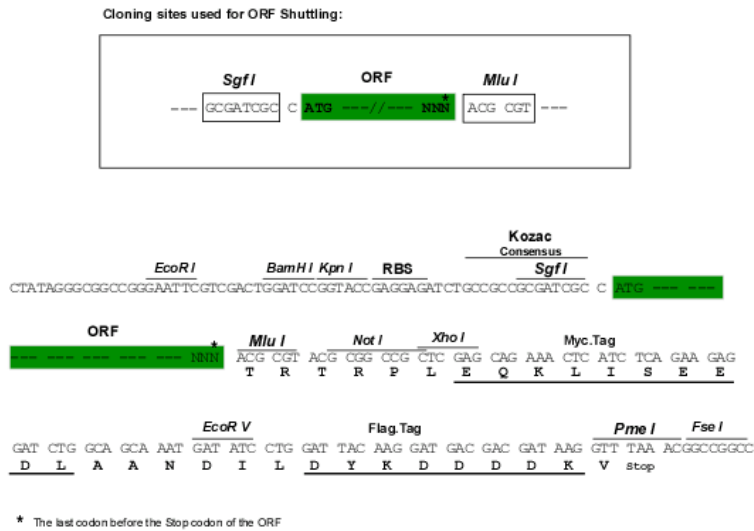


[View online »](#)

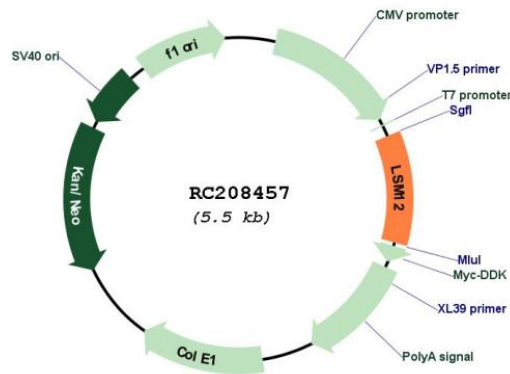
Chromatograms: [https://cdn.origene.com/chromatograms/mk6346\\_h10.zip](https://cdn.origene.com/chromatograms/mk6346_h10.zip)

Restriction Sites: SgfI-MluI

Cloning Scheme:



Plasmid Map:



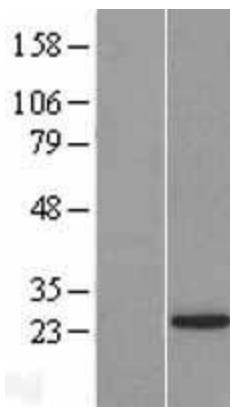
ACCN: NM\_152344

ORF Size: 585 bp

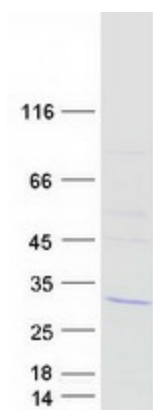
OTI Disclaimer: The molecular sequence of this clone aligns with the gene accession number as a point of reference only. However, individual transcript sequences of the same gene can differ through naturally occurring variations (e.g. polymorphisms), each with its own valid existence. This clone is substantially in agreement with the reference, but a complete review of all prevailing variants is recommended prior to use. [More info](#)

- OTI Annotation:** This clone was engineered to express the complete ORF with an expression tag. Expression varies depending on the nature of the gene.
- Components:** The ORF clone is ion-exchange column purified and shipped in a 2D barcoded Matrix tube containing 10ug of transfection-ready, dried plasmid DNA (reconstitute with 100 ul of water).
- Reconstitution Method:**
1. Centrifuge at 5,000xg for 5min.
  2. Carefully open the tube and add 100ul of sterile water to dissolve the DNA.
  3. Close the tube and incubate for 10 minutes at room temperature.
  4. Briefly vortex the tube and then do a quick spin (less than 5000xg) to concentrate the liquid at the bottom.
  5. Store the suspended plasmid at -20°C. The DNA is stable for at least one year from date of shipping when stored at -20°C.
- RefSeq:** [NM\\_152344.4](#)
- RefSeq Size:** 2507 bp
- RefSeq ORF:** 588 bp
- Locus ID:** 124801
- UniProt ID:** [Q3MHD2](#)
- Cytogenetics:** 17q21.31
- MW:** 21.8 kDa

**Product images:**



Western blot validation of overexpression lysate (Cat# [LY407594]) using anti-DDK antibody (Cat# [TA50011-100]). Left: Cell lysates from untransfected HEK293T cells; Right: Cell lysates from HEK293T cells transfected with RC208457 using transfection reagent MegaTran 2.0 (Cat# [TT210002]).



Coomassie blue staining of purified LSM12 protein (Cat# [TP308457]). The protein was produced from HEK293T cells transfected with LSM12 cDNA clone (Cat# RC208457) using MegaTran 2.0 (Cat# [TT210002]).