

Product datasheet for **RC208446**

CHST7 (NM_019886) Human Tagged ORF Clone

Product data:

Product Type:	Expression Plasmids
Product Name:	CHST7 (NM_019886) Human Tagged ORF Clone
Tag:	Myc-DDK
Symbol:	CHST7
Synonyms:	C6ST-2; GST-5
Mammalian Cell Selection:	Neomycin
Vector:	pCMV6-Entry (PS100001)
E. coli Selection:	Kanamycin (25 ug/mL)



[View online »](#)

ORF Nucleotide Sequence:

>RC208446 representing NM_019886
 Red=Cloning site Blue=ORF Green=Tags(s)

TTTTGTAATACGACTCACTATAGGGCGGCCGGAATTCGTCGACTGGATCCGGTACCGAGGAGATCTGCC
 GCC**CGATCGCC**

ATGAAGGGCCGGCGGCGGACGCCGAGAGTACTGCAAGTTCGCGCTGCTGTTGGTGTGTACACGCTGG
 TGCTGTTGCTCGTCCCCTCCGTATTGGACGGCGCGCGACGGGACAAGGGCGCCGAGCACTGCCCGG
 CCTGCAGCGCAGCCTGGGAGTGTGGAGCCTGGAGGCGGCGGCGGCGGGAACGCAGCAGGAGCGGAG
 GCGCGGGCCGCCGAGGAAGGGGGCGCAACCAAGTCTCCTCGGTTCCCAAGCAACCTCAGCGGCGTGTG
 GGGAGGCAGTGTCTCGCGAGAAGCAGCACATCTACGTGCATGCCACCTGGCGCACCGGCTCGTCTTCT
 GGGCGAATCTTTAACCAGCACCCGGACGTTTTCTACTTGTATGAGCCCATGTGGCATCTATGGCAGGCG
 CTGTATCCGGGCGACGCCGAGAGCTTGCAGGGCGCGTGCAGGACATGCTGCGTTCGCTCTTCCGCTGCG
 ACTTCTCCGTGCTGCGGCTGTACGCGCCCGGGGGACCCGCTGCGCGGCCCGGACACGGCCAACTCT
 TACCACGGCCGCCCTCTCCGCTGGCGGACTAACAAAGTCACTGCTCGCCGCACTGTGTCTGGCGCA
 CCCCGTGCCCGGGCCGAGGTGGGCTCGTCGAGGACACCGCTGCGAGCGCAGCTGCCACCCGTGGCGA
 TACGCGCCTGGAGGCCGAGTGCAGAAAGTACCCGGTGGTGGTCAAGGACGTGCGCCTGCTCGATCT
 GGGCGTGTGGTCCCCTGTTGCGTGATCCAGGCCTCAACCTGAAGGTGGTGCAGTTTTCCGCGACCCG
 AGGGCGGTGCACAACCTCGCGCTCAAGTCTAGGCAGGACTGCTGCGCGAGAGCATCCAGGTGCTGCGCA
 CCCGCCAGAGGGGCGACCGCTTCCACCGTGTGCTGCTGGCGCACGGCGTGGGTGCTCGCCCCGGGGCCA
 GTCTCGCGCGTCCCGCCGCGCGCGCCGATTTCTTCTGACCGGTGCGCTCGAGGTGATCTGCGAA
 GCCTGGCTGCGGATCTGTTTTCGCGCGCGCGCGCCGCTGGCTGCGGCGCCGCTACCTGAGGCTGC
 GCTATGAGGACCTGGTGCAGCACGCCAGCGCCAGCTGCGCCGCTGCTGCGCTTCTCCGGGCTACGCGC
 GCTCGCAGCGCTCGATGCCCTTCGCGCTCAACATGACTCGCGCGCGGCTACGGCCCGACCGGCCCTTC
 CACCTGTGAGCGCGGACGCCCGGGAGGCGGTGCACGCCTGGCGCGAGCGCTGAGCCGAGAGCAGGTGC
 GCCAGGTGGAGCCGCTGCGCTCCAGCATGCGTCTGCTCGCTACCCTCGCAGCGGAGAGGGGCGA
 CGCGGAGCAGCCAGGGAAGGGGAGACGCCGCTGGAGATGGATGCCGACGGCGCCACG

ACGCGTACGCGGCCGCTCGAGCAGAACTCATCTCAGAAGAGGATCTGGCAGCAATGATATCCTGGATT
 ACAAGGATGACGACGATAAGGTTTAA

Protein Sequence:

>RC208446 representing NM_019886
 Red=Cloning site Green=Tags(s)

MKGRRRRRREYCKFALLLVLYLVLLVPSVLDGGRDGDGKGAEHCPGLQRSLGVWSLEAAAAGEREQGA
 ARAAEEGGANQSPRFPSNL SGAVGEAVSREKQHIYVHATWRTGSSFLGELFNQHPDVFYLYEPMWHLWQA
 LYPGDAESLQGALRDMLRSLFRCDFSVLRLYAPPGDPAARAPDTANLTTAALFRWRNTKVICSPPLCPGA
 PRARAEVGLVEDTACERSCPPVAIRALEAECRKYPVVVIKDVRLDLGVLVPLLRDPGLNLKVVQLFRDP
 RAVHNSRLKSRQGLLRESIQVLRTRQRGDRFHRVLLAHGVGARPGGQSRALPAAPRADFFLTGALEVICE
 AWLRLDLFARGAPAWLRRRYLRRLRYEDLVRQPRAQLRRLRFSGLRALALDAFALNMTRGAAYGADRPF
 HLSARDAREAVHAWRERLSREQVRQVEAACAPAMRLLAYPRSGEEGDAEQPREGETPLEMDADGAT

TRTRPLEQKLISEEDLAANDILDYKDDDDKV

Chromatograms:

https://cdn.origene.com/chromatograms/mk8113_g07.zip

Restriction Sites:

Sgfl-MluI

Cloning Scheme:

Cloning sites used for ORF Shutting:



* The last codon before the Stop codon of the ORF

ACCN: NM_019886

ORF Size: 1458 bp

OTI Disclaimer: The molecular sequence of this clone aligns with the gene accession number as a point of reference only. However, individual transcript sequences of the same gene can differ through naturally occurring variations (e.g. polymorphisms), each with its own valid existence. This clone is substantially in agreement with the reference, but a complete review of all prevailing variants is recommended prior to use. [More info](#)

OTI Annotation: This clone was engineered to express the complete ORF with an expression tag. Expression varies depending on the nature of the gene.

Components: The ORF clone is ion-exchange column purified and shipped in a 2D barcoded Matrix tube containing 10ug of transfection-ready, dried plasmid DNA (reconstitute with 100 ul of water).

Reconstitution Method:

1. Centrifuge at 5,000xg for 5min.
2. Carefully open the tube and add 100ul of sterile water to dissolve the DNA.
3. Close the tube and incubate for 10 minutes at room temperature.
4. Briefly vortex the tube and then do a quick spin (less than 5000xg) to concentrate the liquid at the bottom.
5. Store the suspended plasmid at -20°C. The DNA is stable for at least one year from date of shipping when stored at -20°C.

RefSeq: [NM_019886.4](#)
RefSeq Size: 2330 bp

RefSeq ORF: 1461 bp

Locus ID: 56548

UniProt ID: [Q9NS84](#)
Cytogenetics: Xp11.3

Domains: Sulfotransferase

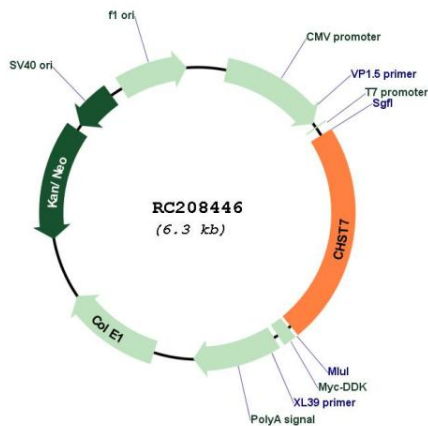
Protein Families: Transmembrane

Protein Pathways: Chondroitin sulfate biosynthesis

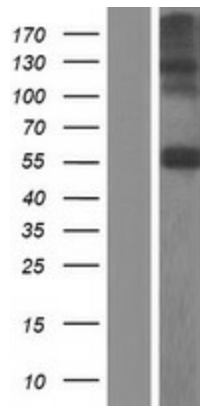
MW: 54.1 kDa

Gene Summary: This gene is a member of the Gal/GalNAc/GlcNAc (galactose/N-acetylgalactosamine/N-acetylglucosamine) 6-O-sulfotransferase (GST) family. Members of this family encode enzymes that catalyze the specific addition of sulfate groups to distinct hydroxyl and amino groups of carbohydrates. The encoded protein catalyzes the sulfation of 6-hydroxyl group of GalNAc in chondroitin. [provided by RefSeq, Aug 2013]

Product images:



Circular map for RC208446



Western blot validation of overexpression lysate (Cat# [LY412672]) using anti-DDK antibody (Cat# [TA50011-100]). Left: Cell lysates from untransfected HEK293T cells; Right: Cell lysates from HEK293T cells transfected with RC208446 using transfection reagent MegaTran 2.0 (Cat# [TT210002]).