

Product datasheet for **RC208434**

ACBD3 (NM_022735) Human Tagged ORF Clone

Product data:

Product Type:	Expression Plasmids
Product Name:	ACBD3 (NM_022735) Human Tagged ORF Clone
Tag:	Myc-DDK
Symbol:	ACBD3
Synonyms:	GCP60; GOCAP1; GOLPH1; PAP7
Mammalian Cell Selection:	Neomycin
Vector:	pCMV6-Entry (PS100001)
E. coli Selection:	Kanamycin (25 ug/mL)



[View online »](#)

ORF Nucleotide Sequence:

>RC208434 ORF sequence
 Red=Cloning site Blue=ORF Green=Tags(s)

TTTTGTAATACGACTCACTATAGGGCGGCCGGGAATTCGTCGACTGGATCCGGTACCGAGGAGATCTGCC
 GCC**CGCATCGCC**

ATGGCGCGGTGTCTGAACGCAGAGCGACTCGAGGTGTCCGTGCGAGCGCCTCACGCTCAGCCCGGACCCGG
 AGGAGCGGCCTGGGGCGAGGGCGCCCGCTGCTGCCGCCACCGTGCACCGCCCTCGCCACCTGGATC
 CGGTGCGGGCCCGGGCGCCTCAGGGGAGCAGCCCGAGCCGGGGAGGCGCGGCTGGGGGCGCGGGAG
 GAGGCGCGCGGCTGGAGCAGCGCTGGGGTTTCGGCCTGGAGGAGTTGTACGGCCTGGCACTGCGCTTCT
 TCAAAGAAAAAGATGGCAAAGCATTTTCATCAACTTATGAAGAAAAATTGAAGCTTGTGGCACTGCATAA
 GCAAGTCTTATGGGCCATATAATCCAGACACTTGTCTGAGTTGGATTCTTTGATGTGTTGGGGAT
 GACAGGAGGAGAGAATGGGCAGCCCTGGGAAACATGTCTAAAGAGGATGCCATGGTGGAGTTTGTCAAGC
 TCTTAAATAGGTGTTGCCATCTCTTTCAACATATGTTGCGTCCACAAAATAGAGAAGGAAGCAAGA
 AAAAAAGGAAGGAGGAAGAGGAGCGAAGGCGGCGTGAAGAGGAAGAAAGAGAAGCTCTGCAAAAGGAG
 GAAGAGAAACGTAGGAGAGAAGAAGAGGAAAGGCTTCGACGGGAGGAAGAGGAAAGGAGACGGATAGAAG
 AAGAAAGGCTTCGGTTGGAGCAGCAAAAGCAGCAGATAATGGCAGCTTAACTCCCAGACTGCCGTGCA
 GTTCCAGCAGTATGCAGCCCAACAGTATCCAGGAACTACGAACAGCAGCAAATCTCATCCGCCAGTTG
 CAGGAGCAACACTATCAGCAGTACATGCAGCAGTTGTATCAAGTCCAGCTTGACAGCAACAGGCAGCAT
 TACAGAAACAACAGGAAGTAGTAGTGGCTGGGTCTTCTTGCCTACATCATCAAAAGTGAATGCAACTGT
 ACCAAGTAATATGATGTCAGTTAATGGACAGGCCAAAACACACTGACAGCTCCGAAAAAGAACTGGAA
 CCGGAAGCTGCAGAAGAAGCCCTGGAGAATGGACAAAAGAATCTCTCCAGTAATAGCAGCTCCATCCA
 TGTGGACACGACCTCAGATCAAAGACTTCAAAGAGAAGATTTCAGCAGGATGCAGATTCGGTATACAGT
 GGGCCGAGGAGAAGTGGTCACTGTTTCGAGTACCCACCCATGAAGAAGGATCATATCTCTTTGGGAATTT
 GCCACAGACAATTATGACATTGGGTTTGGGTGTATTTTGAATGGACAGACTCTCAAACACTGCTGTCA
 GCGTGCATGTCAGTGAGTCCAGCGATGACGACGAGGAGGAAGAAGAAAACATCGTTGTGAAGAGAAAGC
 CAAAAAGAAATGCCAACAGCCTTTGCTGGATGAGATTGTGCCTGTGTACCGACGGGACTGTCATGAGGAG
 GTGTATGCTGGCAGCCATCAATATCCAGGGAGAGGAGTCTATCTCCTCAAGTTTGACAACCTACTCTT
 TGTGGCGTCAAATCAGTCTACTACAGAGTCTATTATACTAGA

ACGCGTACGCGGCCGCTCGAGCAGAAACTCATCTCAGAAGAGGATCTGGCAGCAAATGATATCTGGATT
 ACAAGGATGACGACGATAAGGTTTAA

Protein Sequence:

>RC208434 protein sequence
 Red=Cloning site Green=Tags(s)

MAAVLNLAERLEVSVDGLTLSPDPEERPGAEGAPLLPPPLPPPSPGSGRGPASGEQPEPGEAAAGGAAE
 EARRLEQRWGFLEELYGLALRFKEKDGKAFHPTYEEKLKLVALHKQVLMGPYNPDTCEVGFDFVLGN
 DRRREWAALGNMSKEDAMVEFVKLLNRCCHLFSTYVASHKIEKEEQEKRRKEEEERRRERERLQKE
 EEKRRREERERLRREERERRIEERLRLEQQKQQIMAALNSQTAVQFQQYAAQQYPGNIEQQQILIRQL
 QEYHYQQYMQQLYQVQLAQQQAALQKQEVVAVAGSSLPTSSKVNATVPSNMMSVNGQAKHTDSSEKELE
 PEAAEEALENGPKESLPVIAAPSMWTRPQIKDFKEKIQQDADSVITVGRGEVVTVRVPTHEEGSYLWFEF
 ATDNYDIGFVYFEWTDSPNTAVSVHVSESSDDDEEEENIGCEEKAKKNANKPLLDEIVPVYRRDCHEE
 VYAGSHQYPGRGVYLLKFDNSYSLWRSKSVYYRVYYTR

TRTRPLEQKLISEEDLAANDILDYKDDDDKV

Chromatograms:

https://cdn.origene.com/chromatograms/mk6216_d11.zip

Restriction Sites:

SgfI-MluI

Cloning Scheme:


ACCN: NM_022735

ORF Size: 1584 bp

OTI Disclaimer: The molecular sequence of this clone aligns with the gene accession number as a point of reference only. However, individual transcript sequences of the same gene can differ through naturally occurring variations (e.g. polymorphisms), each with its own valid existence. This clone is substantially in agreement with the reference, but a complete review of all prevailing variants is recommended prior to use. [More info](#)

OTI Annotation: This clone was engineered to express the complete ORF with an expression tag. Expression varies depending on the nature of the gene.

Components: The ORF clone is ion-exchange column purified and shipped in a 2D barcoded Matrix tube containing 10ug of transfection-ready, dried plasmid DNA (reconstitute with 100 ul of water).

- Reconstitution Method:**
1. Centrifuge at 5,000xg for 5min.
 2. Carefully open the tube and add 100ul of sterile water to dissolve the DNA.
 3. Close the tube and incubate for 10 minutes at room temperature.
 4. Briefly vortex the tube and then do a quick spin (less than 5000xg) to concentrate the liquid at the bottom.
 5. Store the suspended plasmid at -20°C. The DNA is stable for at least one year from date of shipping when stored at -20°C.

Note: Plasmids are not sterile. For experiments where strict sterility is required, filtration with 0.22um filter is required.

RefSeq: [NM_022735.4](#)

RefSeq Size: 3581 bp

RefSeq ORF: 1587 bp

Locus ID: 64746

UniProt ID: [Q9H3P7](#)

Cytogenetics: 1q42.12

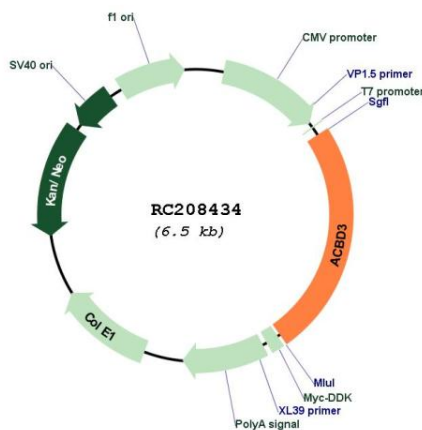
Domains: ACBP

Protein Families: Druggable Genome

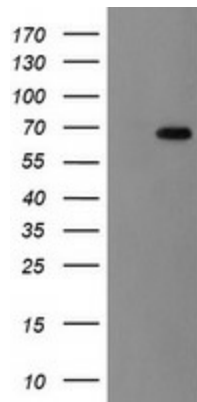
MW: 60.6 kDa

Gene Summary: The Golgi complex plays a key role in the sorting and modification of proteins exported from the endoplasmic reticulum. The protein encoded by this gene is involved in the maintenance of Golgi structure and function through its interaction with the integral membrane protein giantin. It may also be involved in the hormonal regulation of steroid formation. [provided by RefSeq, Jul 2008]

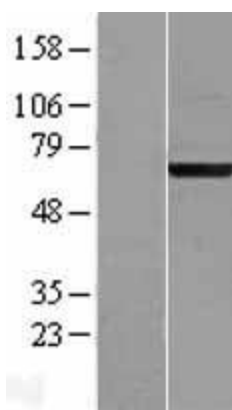
Product images:



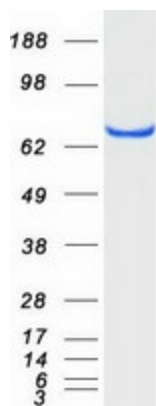
Circular map for RC208434



HEK293T cells were transfected with the pCMV6-ENTRY control (Cat# [PS100001], Left lane) or pCMV6-ENTRY ACBD3 (Cat# RC208434, Right lane) cDNA for 48 hrs and lysed. Equivalent amounts of cell lysates (5 ug per lane) were separated by SDS-PAGE and immunoblotted with anti-ACBD3 (Cat# [TA504863]). Positive lysates [LY411600] (100ug) and [LC411600] (20ug) can be purchased separately from OriGene.



Western blot validation of overexpression lysate (Cat# [LY411600]) using anti-DDK antibody (Cat# [TA50011-100]). Left: Cell lysates from untransfected HEK293T cells; Right: Cell lysates from HEK293T cells transfected with RC208434 using transfection reagent MegaTran 2.0 (Cat# [TT210002]).



Coomassie blue staining of purified ACBD3 protein (Cat# [TP308434]). The protein was produced from HEK293T cells transfected with ACBD3 cDNA clone (Cat# RC208434) using MegaTran 2.0 (Cat# [TT210002]).