

Product datasheet for **RC208433**

PLEKHA3 (NM_019091) Human Tagged ORF Clone

Product data:

Product Type:	Expression Plasmids
Product Name:	PLEKHA3 (NM_019091) Human Tagged ORF Clone
Tag:	Myc-DDK
Symbol:	PLEKHA3
Synonyms:	FAPP1
Mammalian Cell Selection:	Neomycin
Vector:	pCMV6-Entry (PS100001)
E. coli Selection:	Kanamycin (25 ug/mL)
ORF Nucleotide Sequence:	>RC208433 ORF sequence Red=Cloning site Blue=ORF Green=Tags(s)

TTTTGTAATACGACTCACTATAGGGCGGCCGGAATTCGTCGACTGGATCCGGTACCGAGGAGATCTGCC
GCC**CGGATCGCC**

ATGGAGGGGGTGTGTACAAGTGGACCAACTATCTCACAGGCTGGCAGCCTCGTTGGTTTGTTTAGATA
ATGGAATCTTATCCTACTATGATTCACAAGATGATGTTTGCAAAGGGAGCAAAGGAAGCATAAAGATGGC
AGTTTGTGAAATTAAGTTCATTCAGCAGACAACAAGAATGGAATTAATCATTCTGGAGAGCAGCAT
TTCTACATGAAGGCAGTGAATGCAGCTGAAAGACAGAGGTGGCTGGTCGCTCTGGGGAGCTCCAAGCAT
GTTTGACTGATACAAGGACTAAAAAAGAAAAGAAATAAGTGAAACCAGTGAATCGCTGAAAACCAAAT
GTCTGAACTTCGCCTCTACTGTGACCTCTAATGCAGCAAGTTCATAAATACAGGAATTTGTTCCACAT
GATGAGAATCATTTCATCTCCTAGTGCAGAGAACATGAATGAAGCCTCTTCTCTGCTTAGTCCACGTGTA
ACACATTCATCACAACGCTTGAGGAATGTGTGAAGATAGCCAATGCCAAGTTAAACCTGAGATGTTTCA
ACTGCACCATCCGGATCCCTTAGTTTCTCCTGTGTACCTTCTCCTGTTCAAATGATGAAGCGTTCTGTC
AGCCACCCTGGTCTTGCAGTTCAGAGAGGAGTAGCCACTCTATAAAGAACCAGTATCTACACTTCACC
GACTCTCCAGCGACGCCGAAGAACCTACTCAGATACAGATTCTTGTAGTGATATTCCTCTTGAAGACCC
AGATAGACCTGTTCACTGTTCAAAAAATCACTTAATGGAGATTTGGCATCAGCAACCATTCTGAAGAA
AGCAGACTTATGGCCAAAAACAATCTGAATCAGAAGATACTCTCCATCCTTCTCTTCC

ACGCGTACGCGGCCGCTCGAGCAGAAACTCATCTCAGAAGAGGATCTGGCAGCAAATGATATCCTGGATT
ACAAGGATGACGACGATAAGGTTTAA



[View online »](#)

Protein Sequence: >RC208433 protein sequence
Red=Cloning site Green=Tags(s)

MEGLVLYKWTNYLTGWQPRWFLDNGILSYDYSQDDVCKGSKGSIKMAVCEIKVHSADNTRMELIIPGEQH
 FYMKAVNAERQRWLVALGSSKACLTDTRTKKEKEISETSESLKTKMSELRLYCDLLMQQVHTIQEFVHH
 DENHSSPSAENMNEASSLLSATCNTFITLLEECVKIANAKFKPEMQLHHPDPLVSPVSPVQMMKRSV
 SHPGSCSSERSHSIKEPVSTLHRLSQRRTYSDDTDCSDIPLDPRPVHCCKNTLNGDLASATIPPEE
 SRLMAKKQSEEDTLPSFSS

TRTRPLEQKLISEEDLAANDILDYKDDDDKV

Chromatograms: https://cdn.origene.com/chromatograms/mk6126_g01.zip

Restriction Sites: SgfI-MluI

Cloning Scheme:



ACCN: NM_019091

ORF Size: 900 bp

OTI Disclaimer: The molecular sequence of this clone aligns with the gene accession number as a point of reference only. However, individual transcript sequences of the same gene can differ through naturally occurring variations (e.g. polymorphisms), each with its own valid existence. This clone is substantially in agreement with the reference, but a complete review of all prevailing variants is recommended prior to use. [More info](#)

OTI Annotation: This clone was engineered to express the complete ORF with an expression tag. Expression varies depending on the nature of the gene.

Components: The ORF clone is ion-exchange column purified and shipped in a 2D barcoded Matrix tube containing 10ug of transfection-ready, dried plasmid DNA (reconstitute with 100 ul of water).

Reconstitution Method:

1. Centrifuge at 5,000xg for 5min.
2. Carefully open the tube and add 100ul of sterile water to dissolve the DNA.
3. Close the tube and incubate for 10 minutes at room temperature.
4. Briefly vortex the tube and then do a quick spin (less than 5000xg) to concentrate the liquid at the bottom.
5. Store the suspended plasmid at -20°C. The DNA is stable for at least one year from date of shipping when stored at -20°C.

RefSeq: [NM_019091.4](#)

RefSeq Size: 2516 bp

RefSeq ORF: 903 bp

Locus ID: 65977

UniProt ID: [Q9HB20](#)

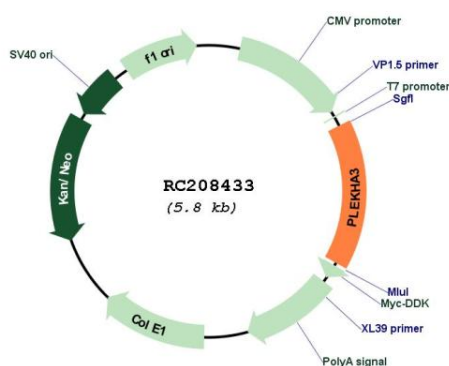
Cytogenetics: 2q31.2

Domains: PH

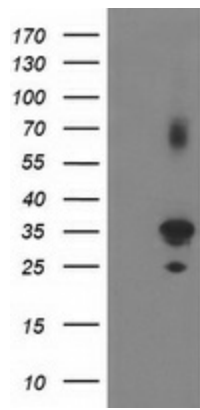
MW: 33.9 kDa

Gene Summary: Involved in Golgi to cell surface membrane traffic. Induces membrane tubulation. Binds preferentially to phosphatidylinositol 4-phosphate (PtdIns4P).[UniProtKB/Swiss-Prot Function]

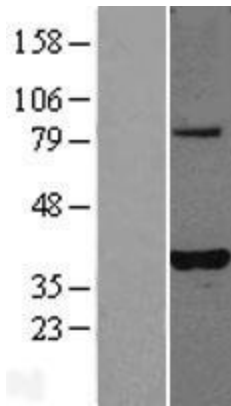
Product images:



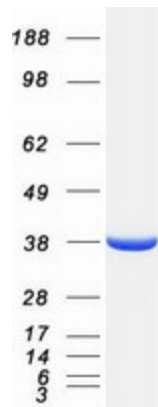
Circular map for RC208433



HEK293T cells were transfected with the pCMV6-ENTRY control (Cat# [PS100001], Left lane) or pCMV6-ENTRY PLEKHA3 (Cat# RC208433, Right lane) cDNA for 48 hrs and lysed. Equivalent amounts of cell lysates (5 ug per lane) were separated by SDS-PAGE and immunoblotted with anti-PLEKHA3(Cat# [TA502927]). Positive lysates [LY402733] (100ug) and [LC402733] (20ug) can be purchased separately from OriGene.



Western blot validation of overexpression lysate (Cat# [LY402733]) using anti-DDK antibody (Cat# [TA50011-100]). Left: Cell lysates from untransfected HEK293T cells; Right: Cell lysates from HEK293T cells transfected with RC208433 using transfection reagent MegaTran 2.0 (Cat# [TT210002]).



Coomassie blue staining of purified PLEKHA3 protein (Cat# [TP308433]). The protein was produced from HEK293T cells transfected with PLEKHA3 cDNA clone (Cat# RC208433) using MegaTran 2.0 (Cat# [TT210002]).