

## Product datasheet for **RC208432L4V**

### YES1 (NM\_005433) Human Tagged ORF Clone Lentiviral Particle

#### Product data:

Product Type:	Lentiviral Particles
Product Name:	YES1 (NM_005433) Human Tagged ORF Clone Lentiviral Particle
Symbol:	YES1
Synonyms:	c-yes; HsT441; P61-YES; Yes
Mammalian Cell Selection:	Puromycin
Vector:	pLenti-C-mGFP-P2A-Puro (PS100093)
Tag:	mGFP
ACCN:	NM_005433
ORF Size:	1629 bp
ORF Nucleotide Sequence:	The ORF insert of this clone is exactly the same as(RC208432).
OTI Disclaimer:	The molecular sequence of this clone aligns with the gene accession number as a point of reference only. However, individual transcript sequences of the same gene can differ through naturally occurring variations (e.g. polymorphisms), each with its own valid existence. This clone is substantially in agreement with the reference, but a complete review of all prevailing variants is recommended prior to use. <a href="#">More info</a>
OTI Annotation:	This clone was engineered to express the complete ORF with an expression tag. Expression varies depending on the nature of the gene.
RefSeq:	<a href="#">NM_005433.3</a> , <a href="#">NP_005424.1</a>
RefSeq Size:	4685 bp
RefSeq ORF:	1632 bp
Locus ID:	7525
UniProt ID:	<a href="#">P07947</a>
Cytogenetics:	18p11.32
Domains:	ptk, SH2, TyrKc, SH3, S_TKc
Protein Families:	Druggable Genome, Protein Kinase



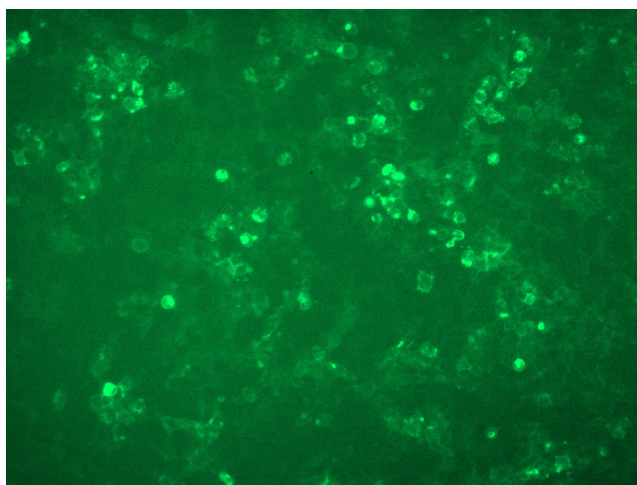
[View online »](#)

**Protein Pathways:** Adherens junction, Tight junction

**MW:** 60.8 kDa

**Gene Summary:** This gene is the cellular homolog of the Yamaguchi sarcoma virus oncogene. The encoded protein has tyrosine kinase activity and belongs to the src family of proteins. This gene lies in close proximity to thymidylate synthase gene on chromosome 18, and a corresponding pseudogene has been found on chromosome 22. [provided by RefSeq, Jul 2008]

### Product images:



[RC208432L4] was used to prepare Lentiviral particles using [TR30037] packaging kit. HEK293T cells were transduced with RC208432L4V particle to overexpress human YES1-mGFP fusion protein.