

## Product datasheet for **RC208432**

### **YES1 (NM\_005433) Human Tagged ORF Clone**

#### **Product data:**

Product Type:	Expression Plasmids
Product Name:	YES1 (NM_005433) Human Tagged ORF Clone
Tag:	Myc-DDK
Symbol:	YES1
Synonyms:	c-yes; HsT441; P61-YES; Yes
Mammalian Cell Selection:	Neomycin
Vector:	pCMV6-Entry (PS100001)
E. coli Selection:	Kanamycin (25 ug/mL)



[View online »](#)

**ORF Nucleotide Sequence:**

>RC208432 ORF sequence  
 Red=Cloning site Blue=ORF Green=Tags(s)

TTTTGTAATACGACTCACTATAGGGCGGCCGGAATTCGTCGACTGGATCCGGTACCGAGGAGATCTGCC  
 GCC**CGGATCGCC**

ATGGGCTGCATTAAGTAAAGAAAACAAAAGTCCAGCCATTAATACAGACCTGAAAATACTCCAGAGC  
 CTGTCAGTACAAGTGTGAGCCATTATGGAGCAGAACCCACTACAGTGTACCATGTCGGTCACTTCAGC  
 AAAGGGAACAGCAGTAAATTTCCAGCAGTCTTTCCATGACACCATTGGAGGATCCTCAGGGGTAACGCCT  
 TTTGGAGGTGCATCTTCCTCATTTCAGTGGTCCAAAGTTCATATCCTGCTGGTTAACAGGTGGTGTTA  
 CTATATTTGTGGCCTTATGATTATGAAGCTAGAACTACAGAAGACCTTCATTTAAGAAGGGTGAAG  
 ATTTCAAATAATTAACAATACGGAAGGAGATTGGTGGGAAGCAAGATCAATCGCTACAGGAAGAATGGT  
 TATATCCCAGCAATTATGTAGCGCCTGCAGATCCATTACAGCAGAAGAATGGTATTTGGCAAAATGG  
 GGAGAAAAGATGCTGAAAGATTACTTTTGAATCCTGGAATCAACGAGGTATTTCTTAGTAAGAGAGAG  
 TGAACAACAAAGGTGCTTATTCCTTTCTATTCGTGATTGGGATGAGATAAGGGGTGACAATGTGAAA  
 CACTACAAAATTAGGAACTTGACAATGGTGGATACTATACACAACCAGAGCACAAATTTGATACTCTGC  
 AGAAATGGTGAACACTACACAGAATGCTGATGGTTTATGCCACAAGTTGACAACCTGTGTGCCAAC  
 TGTGAAACCTCAGACTCAAGGTCTAGCAAAAGATGCTTGGGAAATCCCTCGAGAATCTTTGCGACTAGAG  
 GTTAAACTAGGACAAGGATGTTTCGGCGAAGTGTGGATGGGAACATGGAATGGAACCACGAAAGTAGCA  
 TCAAAACACTAAAACCAGGTACAATGATGCCAGAAGCTTTCCTTCAAGAAGCTCAGATAATGAAAAAAT  
 AAGACATGATAAACTTGTCCACTATATGCTGTTGTTCTGAAGAACCAATTTACATTGCTACTGAATTT  
 ATGTCAAAGGAAGCTTATTAGATTTCTTAAGGAAGGAGATGGAAGTATTTGAAGCTTCCACAGCTGG  
 TTGATATGGCTGCTCAGATTGCTGATGGTATGGCATATATTGAAAGAATGAACTATATTTACCCGAGCTC  
 TCGGGCTGCTAATATTCTTGTAGGAGAAAATCTTGTGTGCAAAATAGCAGACTTTGGTTTAGCAAGGTTA  
 ATTGAAGACAATGAATACACAGCAAGACAAGGTGCAAAATTTCCAATCAAATGGACAGCTCCTGAAGCTG  
 CACTGTATGGTCGGTTTACAATAAAGTCTGATGTCTGGTCATTTGGAATCTGCAAAACAGAACTAGTAAC  
 AAAGGGCCGAGTGCCATATCCAGGTATGGTGAACCGTGAAGTACTAGAACAAGTGGAGCGAGGATACAGG  
 ATGCCGTGCCCTCAGGGCTGCCAGAATCCCTCCATGAATTGATGAATCTGTGTTGGAAGAAGGACCCTG  
 ATGAAAGACCAACATTTGAATATATTCAGTCCTTCTTGAAGACTACTTCACTGCTACAGAGCCACAGTA  
 CCAGCCAGGAGAAAATTTA

**ACGCGT**ACGCGGCCGCTCGAGCAGAAACTCATCTCAGAAGAGGATCTGGCAGCAAATGATATCCTGGATT  
 ACAAGGATGACGACGATAAGGTTTAA

**Protein Sequence:**

>RC208432 protein sequence  
 Red=Cloning site Green=Tags(s)

MGIKSKENKSPAIKYRPENTPEPVSTSVSHYGAEPPTVSPCPSSAKGTAVNFSSLSMTPFGSSGVTP  
 FGGASSFSVVPSSYPAGLTGGVTIFVALYDYEARTTEDLSFKKGERFQIINNTEGDWWEARSIATGKNG  
 YIPSNYVAPADSIQAEWYFGKMGRKDAERLLNPGNQRGIFLVRESETKGAYLSIRDWDEIRGDNVK  
 HYKIRKLDNGGYITTRAQFDLQKLVKHYTEHADGLCHKLTTVCPTVKPQTQGLAKDAWEIPRESLRLE  
 VKLGQCGFGEVVMGTWNGTTKVAIKTLKPGTMMPEAFLQEAQIMKKLRHDKLVPLVAVVSEPIYIVTEF  
 MSKGSLLDFLKEGDGKYLKLPQLVDMAAQIADGMAYIERMNYIHRDLRAANILVGENLVCKIADFLARL  
 IEDNEYTARQGAQFPIKWTAPEAALYGRFTIKSDVWSFGILQTELVTKGRVPYPGMVNREVLQVERGYR  
 MPCPQGCPESLHELMNLCKWKDPDERPTFEYIQSFLEDYFTATEPQYQGENL

**TR**TRPLEQKLISEEDLAANDILDYKDDDDKV

**Chromatograms:**

[https://cdn.origene.com/chromatograms/mk6126\\_e04.zip](https://cdn.origene.com/chromatograms/mk6126_e04.zip)

**Restriction Sites:**

Sgfl-MluI

**Cloning Scheme:**


**ACCN:** NM\_005433

**ORF Size:** 1629 bp

**OTI Disclaimer:** The molecular sequence of this clone aligns with the gene accession number as a point of reference only. However, individual transcript sequences of the same gene can differ through naturally occurring variations (e.g. polymorphisms), each with its own valid existence. This clone is substantially in agreement with the reference, but a complete review of all prevailing variants is recommended prior to use. [More info](#)

**OTI Annotation:** This clone was engineered to express the complete ORF with an expression tag. Expression varies depending on the nature of the gene.

**Components:** The ORF clone is ion-exchange column purified and shipped in a 2D barcoded Matrix tube containing 10ug of transfection-ready, dried plasmid DNA (reconstitute with 100 ul of water).

- Reconstitution Method:**
1. Centrifuge at 5,000xg for 5min.
  2. Carefully open the tube and add 100ul of sterile water to dissolve the DNA.
  3. Close the tube and incubate for 10 minutes at room temperature.
  4. Briefly vortex the tube and then do a quick spin (less than 5000xg) to concentrate the liquid at the bottom.
  5. Store the suspended plasmid at -20°C. The DNA is stable for at least one year from date of shipping when stored at -20°C.

**Note:** Plasmids are not sterile. For experiments where strict sterility is required, filtration with 0.22um filter is required.

**RefSeq:** [NM\\_005433.3](#), [NP\\_005424.1](#)

**RefSeq Size:** 4685 bp

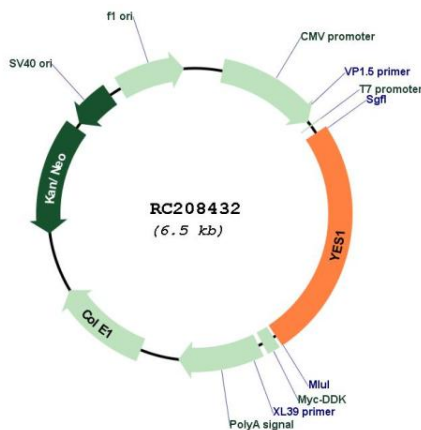
**RefSeq ORF:** 1632 bp

**Locus ID:** 7525

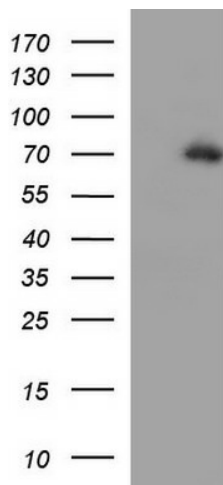
**UniProt ID:** [P07947](#)  
**Cytogenetics:** 18p11.32  
**Domains:** pkinase, SH2, TyrKc, SH3, S\_TKc  
**Protein Families:** Druggable Genome, Protein Kinase  
**Protein Pathways:** Adherens junction, Tight junction  
**MW:** 60.8 kDa

**Gene Summary:** This gene is the cellular homolog of the Yamaguchi sarcoma virus oncogene. The encoded protein has tyrosine kinase activity and belongs to the src family of proteins. This gene lies in close proximity to thymidylate synthase gene on chromosome 18, and a corresponding pseudogene has been found on chromosome 22. [provided by RefSeq, Jul 2008]

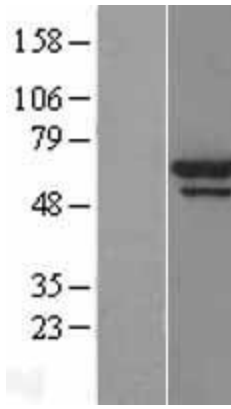
### Product images:



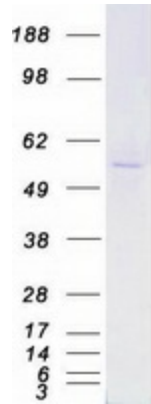
Circular map for RC208432



HEK293T cells were transfected with the pCMV6-ENTRY control (Cat# [PS100001], Left lane) or pCMV6-ENTRY YES1 (Cat# RC208432, Right lane) cDNA for 48 hrs and lysed. Equivalent amounts of cell lysates (5 ug per lane) were separated by SDS-PAGE and immunoblotted with anti-YES1 (Cat# [TA590206]). Positive lysates [LY401664] (100ug) and [LC401664] (20ug) can be purchased separately from OriGene.



Western blot validation of overexpression lysate (Cat# [LY401664]) using anti-DDK antibody (Cat# [TA50011-100]). Left: Cell lysates from untransfected HEK293T cells; Right: Cell lysates from HEK293T cells transfected with RC208432 using transfection reagent MegaTran 2.0 (Cat# [TT210002]).



Coomassie blue staining of purified YES1 protein (Cat# [TP308432]). The protein was produced from HEK293T cells transfected with YES1 cDNA clone (Cat# RC208432) using MegaTran 2.0 (Cat# [TT210002]).