

Product datasheet for **RC208423**

YTHDF3 (NM_152758) Human Tagged ORF Clone

Product data:

Product Type:	Expression Plasmids
Product Name:	YTHDF3 (NM_152758) Human Tagged ORF Clone
Tag:	Myc-DDK
Symbol:	YTHDF3
Synonyms:	DF3
Mammalian Cell Selection:	Neomycin
Vector:	pCMV6-Entry (PS100001)
E. coli Selection:	Kanamycin (25 ug/mL)



[View online »](#)

ORF Nucleotide Sequence:

>RC208423 ORF sequence
 Red=Cloning site Blue=ORF Green=Tags(s)

TTTTGTAATACGACTCACTATAGGGCGGCCGGGAATTCGTCGACTGGATCCGGTACCGAGGAGATCTGCC
 GCC**CGGATCGCC**

ATGTCAGCCACTAGCGTGGATCAGAGACCTAAAGGGCAAGGAAATAAAGTTTCAGTACAAAACGGTTCGA
 TTCATCAAAAAGATGCTGTAATGATGATGATTTTGAGCCATACTTAAGTAGCCAGACAAATCAGAGTAA
 CAGCTATCCACCAATGTGATCCATACATGCCTAGTTACTATGCTCCATCCATTGGATTCCATATTCT
 CTTGGGAAGCAGCGTGGTCCACAGCTGGAGACCAGCCTATGCCATATCTGACAACCTATGGACAAATGA
 GTAATGGAGAACACTACTATATACCAGATGGTGTATTTAGTCAACCTGGGGCATTAGGAAATACCCCTCC
 ATTTCTTGGTCAACATGGATTTAACTTTTTCTGGTAATGCTGATTTCTCTACATGGGGGACAAGTGA
 TCTCAGGACAATCAACACAAAGTTCTGCTTATAGTAGCAGTTATGGCTATCCACCTAGTTCTCTGGGA
 GAGCTATTACTGATGGACAGGCTGGATTGGCAATGATACTTTGAGTAAGTGCCTGGCATTAGCAGTAT
 TGAGCAAGGCATGACTGGACTGAAAATTTGGTGGTGACCTGACAGCTGCAGTGACAAAACTGTAGGTACA
 GCTTTGAGCAGCAGTGGTATGACTAGCATTGCAACCAATAGTGTGCCCCAGTTAGCAGTGCAGCACCTA
 AACCAACCTCCTGGGCTGCCATTGCCAGAAAGCCTGCCAAACCTCAACCGAAACTTAAACCAAGGGCAA
 TGTGGGAATTGGGGTCTGCTGTACCACCACCTCTATAAAAACAACATGAATATTGGAACCTGGGAT
 GAAAAAGGGTCAGTGGTAAAGGCTCCACCAACCAACAGTTCTGCCTCCTCAAATAATCCAGCAGC
 CTCAGCCATTAATTAACCACCACCTGGTGCAGGCAACCTGCCTCAACAGCAGCCTCAACCACCACA
 ACCACAGCAGCAACAAGGACCTCAGCCACAGGCCAGCCTCACCAGTGCAGCCTCAACAGCAGCAGCTG
 CAGAATCGCTGGTAGCTCCTCGTAACAGGGGAGCAGGCTCAACCAGAACAATGGAGCGGGCAGTGAAA
 ACTTTGGTTAGGTGTTGACCTGTCAGTGCTTACCTTCTAGTGTAGAAGTGCATCCCGCTGGAAAA
 GCTAAAGGCCATAAACTATAATCCCAAGACTTTGATTGGAATCTGAAGAATGGACGTGTGTTATA
 ATTAAGGCTACTCTGAGGATGACATACATCGTCCATTAATACTCTATCTGGTGTAGTACTGAGCATG
 GTAATAAGCGTTTGGATGCAGCTTACCCTCCCTGAATGGGAAAGGCCACTCTATTTACTCTTCAGTGT
 GAATGGCAGTGGACATTTTGTGGAGTGGCTGAAATGAAGTCTGTTGTGGACTATAATGCGTATGCTGGT
 GTCTGGTCTCAGGATAAGTGAAGGGCAAATTTGAAGTAAATGGATCTTTGTCAAAGATGTTCCCAATA
 ACCAATTACGGCATATTCGTTAGAAAATAATGACAACAAACCGTTACCAATTCAGGGGACTCAAGA
 GGTACCCCTAGAAAAAGCTAAGCAAGTGTAAAATAATTGCTACTTTCAAGCATACCACCTCAATCTTT
 GATGACTTTGCACATTATGAAAAGCGTCAAGAAGAGGAGGAGCCATGCGTAGGGAGAGAAATAGAAACA
 AACAA

ACGCGTACGCGGCCGCTCGAGCAGAAACTCATCTCAGAAGAGGATCTGGCAGCAAATGATATCCTGGATT
 ACAAGGATGACGACGATAAGGTTTAA

Protein Sequence:

>RC208423 protein sequence
 Red=Cloning site Green=Tags(s)

MSATSVDQRPKGQGNKVSQNGSIHQKDAVNDDDFEPYLSSTQNSNSYPPMSDPYMPSSYAPSIGFPYS
 LGEAAWSTAGDQMPYLYTYGQMSNGEHHYIPDGVFSQPGALGNTPPFLGQHGFFNFPGNADFSTWGTSG
 SQGQSTQSSAYSSSYGPPSSLGRAITDQAGFGNDLSKVPGISSIEQGMTGLKIGDDLTAAVTKVGT
 ALSSSGMTSIATNSVPPVSSAAPKPTSWAAIARKPAKQPPLKPKGNVIGGSVPPPIKHNMNIGTWD
 EKGSVVKAPPTQPVLPQTIIQQPQPLIQPPPLVQSQLPQQQPQQPQQQQGPPQAQPHQVQPQQQL
 QNRWVAPRNRGAGFNQNGAGSENFGLGVVPSASPSSEVHPVLEKKAINNYPKDFDWNLNKGRVFI
 IKSYSDDIHRSIKYSIWCSTEHNKRLDAAYRSLNGKPLYLLFSVNGSGHFCGVAEMKSVVDYNAYAG
 VWSQDKWKGFVKWIFVKDVPNNQLRHIRLENNDNKPVNSRDTEVPLEKAKQVLKIIATFKHTTSIF
 DDFAHYEKRQEEEEAMRRERNRNKQ

TRTRPLEQKLISEEDLAANDILDYKDDDDKV

Chromatograms:

https://cdn.origene.com/chromatograms/mk6349_c02.zip

Restriction Sites: SgfI-MluI

Cloning Scheme:



ACCN: NM_152758

ORF Size: 1755 bp

OTI Disclaimer: Due to the inherent nature of this plasmid, standard methods to replicate additional amounts of DNA in E. coli are highly likely to result in mutations and/or rearrangements. Therefore, OriGene does not guarantee the capability to replicate this plasmid DNA. Additional amounts of DNA can be purchased from OriGene with batch-specific, full-sequence verification at a reduced cost. Please contact our customer care team at custsupport@origene.com or by calling 301.340.3188 option 3 for pricing and delivery.

The molecular sequence of this clone aligns with the gene accession number as a point of reference only. However, individual transcript sequences of the same gene can differ through naturally occurring variations (e.g. polymorphisms), each with its own valid existence. This clone is substantially in agreement with the reference, but a complete review of all prevailing variants is recommended prior to use. [More info](#)

OTI Annotation: This clone was engineered to express the complete ORF with an expression tag. Expression varies depending on the nature of the gene.

Components: The ORF clone is ion-exchange column purified and shipped in a 2D barcoded Matrix tube containing 10ug of transfection-ready, dried plasmid DNA (reconstitute with 100 ul of water).

Reconstitution Method:

1. Centrifuge at 5,000xg for 5min.
2. Carefully open the tube and add 100ul of sterile water to dissolve the DNA.
3. Close the tube and incubate for 10 minutes at room temperature.
4. Briefly vortex the tube and then do a quick spin (less than 5000xg) to concentrate the liquid at the bottom.
5. Store the suspended plasmid at -20°C. The DNA is stable for at least one year from date of shipping when stored at -20°C.

RefSeq: [NM_152758.6](#)

RefSeq Size: 5171 bp

RefSeq ORF: 1758 bp

Locus ID: 253943

UniProt ID: [Q7Z739](#)

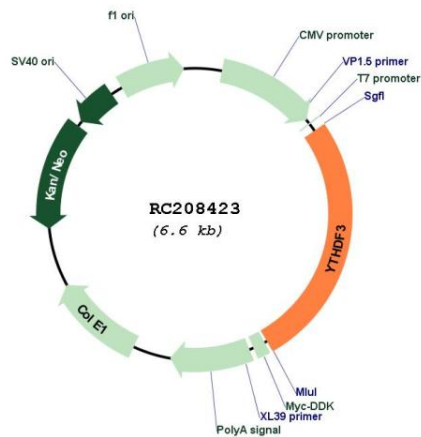
Cytogenetics: 8q12.3

Domains: YTH

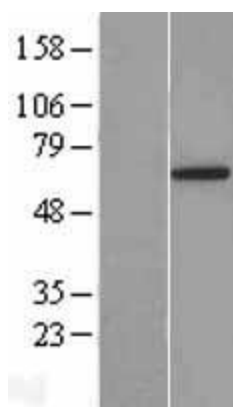
MW: 63.9 kDa

Gene Summary: This gene encodes a member of the YTH (YT521-B homology) domain protein family. The YTH domain is common in eukaryotes, is often found in the middle of the protein sequence, and may function in binding to RNA. Alternative splicing results in multiple transcript variants. [provided by RefSeq, Apr 2013]

Product images:



Circular map for RC208423



Western blot validation of overexpression lysate (Cat# [LY407308]) using anti-DDK antibody (Cat# [TA50011-100]). Left: Cell lysates from untransfected HEK293T cells; Right: Cell lysates from HEK293T cells transfected with RC208423 using transfection reagent MegaTran 2.0 (Cat# [TT210002]).