

Product datasheet for RC208422

LRRC28 (NM_144598) Human Tagged ORF Clone

Product data:

Product Type:	Expression Plasmids
Product Name:	LRRC28 (NM_144598) Human Tagged ORF Clone
Tag:	Myc-DDK
Symbol:	LRRC28
Mammalian Cell Selection:	Neomycin
Vector:	pCMV6-Entry (PS100001)
E. coli Selection:	Kanamycin (25 ug/mL)
ORF Nucleotide Sequence:	>RC208422 ORF sequence Red=Cloning site Blue=ORF Green=Tags(s)

TTTTGTAATACGACTCACTATAGGGCGGCCGGAATTCGTCGACTGGATCCGGTACCGAGGAGATCTGCC
GCC**CGATCGCC**

ATGGCGTCCGAACCTTTGTAAGACGATCTCTGTGGCAAGGCTAGAAAAGCACAAGAATTTGTTCTTAAATT
ATAGGAATCTGCACCATTTCCATTGGAGTTACTGAAAGATGAGGGACTGCAGTACTTGGAGAGACTCTA
TATGAAAAGGAACCTCCCTGACATCCTTGCCAGAAAACCTTGCTCAGAAGCTTCCAACCTTGTGAACTA
TACCTGCACTCAAATAACATAGTTGTGGTCCGGAAGCCATTGGGTCTCTTGTAAAACCTCAATGTCTGG
ATCTTAGTGACAATGCCTTAGAAATTTGTTGCCAGAAAATGGTCTGAGAGCTTACGTCATCTTCG
ATTAGCTAATAACCAACTGCAATTCCTACCTCCAGAGGTTGGCGATTTGAAGGAGCTGCAGACACTAGAC
ATTTCTACCAATCGTTTGCTAACTTTACCCGAGAGGCTTACATGTGCCTTTCTCTGCAGTACCTCACTG
TGGACCGAAATCGTCTATGGTATGTGCCGCGCCATCTCTGCCAGCTGCCAGCCTCAATGAGCTCTCCAT
GGCTGGAACCGTCTTGCAATTTTGCCACTTGATTTAGGTCGATCTCGAGAACTACAGTATGTATACGTG
GATAACAACATTCACCTGAAAGGCTTGCCATCTTATCTGTACAATAAAGTCATCGGGTGCAGTGGCTGTG
GTGCTCCATTCAAGTTCCGAGGTGAAGCTGCTTTCCTTTTCATCAGGGCAGCGAACCGTTTTCTCC
AGCTGAGGTGAAGCCATAGGGACGGAGCATGATCACGTCCTCCCTCTGCAGGAATGGCTATGAGAGGG
CTGTATCATACCTACCACAGCTTGTGAAAGATTTGAACTTTCTGTCTCCAATCTCATTACCCAGAAGTC
TCCTAGAGCTGCTGCACTGCCCTCTGGGCACTGTATCGGTGTAGTGAGCCTATGTTTACCATCGTCTA
CCCCAAGCTCTTTCCCTTGAGAGAGACGCCAATGGCAGGGCTGCACCAGTGGAAAGACAACCTGTTAGTTTT
GTGGCTTACTGCTGCTCCACCCAGTGTCTGCAGACTTTTGACCTGCTGAGT

ACGCGTACGCGGCCGCTCGAGCAGAAACTCATCTCAGAAGAGGATCTGGCAGCAAATGATATCCTGGATT
ACAAGGATGACGACGATAAGGTTTAA



[View online »](#)

Protein Sequence: >RC208422 protein sequence
Red=Cloning site Green=Tags(s)

MASELCKTISVARLEKHKNLFLNYRNLHHPLELLKDEGLQYLERLYMKRNSLTSLPENLAQKLPNLVEL
 YLHSNNIVVVPEAIGSLVKLQCLDLSDNALEIVCPEIGRLRALRHLRLANNQLQLPPEVGDLELQTLTLD
 ISTNRLLTLPERLHMCLSLQYLTVDRNRLWYVPRHLCQLPSLNELSMAGNRLAFLPLDLGRSRELQYVVV
 DNNIHLKGLPSYLYNKVIGCSGCGAPIQVSEVKLLSFSSGQRTVFLPAEVKAIGTEHDHVLPLQELAMRG
 LYHTYHSLKDLNFLSPIISLPRSLLELLHCPHGCHRCSEPMFTIVYPKLFPLRETPMAGLHQWKTTSVF
 VAYCCSTQCLQTFDILLS

TRTRPLEQKLISEEDLAANDILDYKDDDDKV

Chromatograms: https://cdn.origene.com/chromatograms/mk6347_b10.zip

Restriction Sites: SgfI-MluI

Cloning Scheme:

Cloning sites used for ORF Shuttling:



* The last codon before the Stop codon of the ORF

ACCN: NM_144598

ORF Size: 1101 bp

OTI Disclaimer: The molecular sequence of this clone aligns with the gene accession number as a point of reference only. However, individual transcript sequences of the same gene can differ through naturally occurring variations (e.g. polymorphisms), each with its own valid existence. This clone is substantially in agreement with the reference, but a complete review of all prevailing variants is recommended prior to use. [More info](#)

OTI Annotation: This clone was engineered to express the complete ORF with an expression tag. Expression varies depending on the nature of the gene.

Components: The ORF clone is ion-exchange column purified and shipped in a 2D barcoded Matrix tube containing 10ug of transfection-ready, dried plasmid DNA (reconstitute with 100 ul of water).

- Reconstitution Method:**
1. Centrifuge at 5,000xg for 5min.
 2. Carefully open the tube and add 100ul of sterile water to dissolve the DNA.
 3. Close the tube and incubate for 10 minutes at room temperature.
 4. Briefly vortex the tube and then do a quick spin (less than 5000xg) to concentrate the liquid at the bottom.
 5. Store the suspended plasmid at -20°C. The DNA is stable for at least one year from date of shipping when stored at -20°C.

RefSeq: [NM_144598.5](#)

RefSeq Size: 1569 bp

RefSeq ORF: 1104 bp

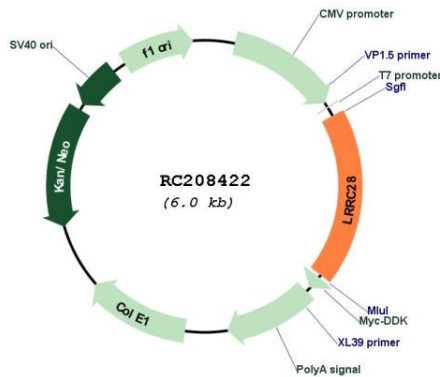
Locus ID: 123355

UniProt ID: [Q86X40](#)

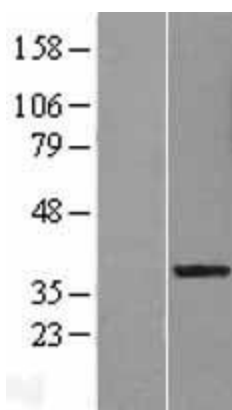
Cytogenetics: 15q26.3

MW: 41.9 kDa

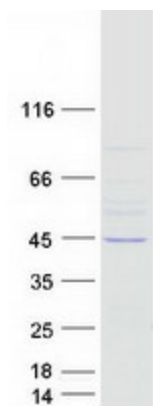
Product images:



Circular map for RC208422



Western blot validation of overexpression lysate (Cat# [LY408239]) using anti-DDK antibody (Cat# [TA50011-100]). Left: Cell lysates from untransfected HEK293T cells; Right: Cell lysates from HEK293T cells transfected with RC208422 using transfection reagent MegaTran 2.0 (Cat# [TT210002]).



Coomassie blue staining of purified LRRC28 protein (Cat# [TP308422]). The protein was produced from HEK293T cells transfected with LRRC28 cDNA clone (Cat# RC208422) using MegaTran 2.0 (Cat# [TT210002]).