

Product datasheet for **RC208413**

C11ORF46 (ARL14EP) (NM_152316) Human Tagged ORF Clone

Product data:

Product Type:	Expression Plasmids
Product Name:	C11ORF46 (ARL14EP) (NM_152316) Human Tagged ORF Clone
Tag:	Myc-DDK
Symbol:	C11ORF46
Synonyms:	ARF7EP; C11orf46; dj299F11.1
Mammalian Cell Selection:	Neomycin
Vector:	pCMV6-Entry (PS100001)
E. coli Selection:	Kanamycin (25 ug/mL)
ORF Nucleotide Sequence:	>RC208413 ORF sequence Red=Cloning site Blue=ORF Green=Tags(s)

TTTTGTAATACGACTCACTATAGGGCGGCCGGAATTCGTCGACTGGATCCGGTACCGAGGAGATCTGCC
GCC**CGATCGCC**

ATGATGGATCCATGTTTCAGTTGGAGTCCAGCTTCGTAACAATGAGTGCCATAAACCTACTATACTC
GTCACACAGGTTTTAAGACTTTGCAAGAATTGTCATCAAATGATATGCTTTTACTTCACTTAGAACTGG
AATGACACTTTCTGGGAACAATAAATTTGCTTTCATCATGTAAAAATTTACATTGACAGATTTGAGGAT
TTACAGAAGTCATGTTGTGACCCATTTAACATACACAAGAAATTAGCCAAAAAAATTTGCATGTAATTG
ACTTAGATGATGCCACTTTTCTGAGTGCTAAATTTGGAAGACAGCTTGTACCTGGTTGGAAGCTTTGTCC
AAAATGCACACAGATAATCAATGGAAGTGTGGATGTTGATACTGAAGACCGCCAGAAAAGGAAACCTGAG
TCAGATGGAAGAAGTCTAAAGCTTTGAGGTCATTACAATTTACGAATCCAGGAAGGCAAACCTGAATTTG
CTCCAGAAAAGTGGTAAAAGAGAAAAAGAAGGCTTACAAAAATGCAACCGCTGGTTCAGACAGACAAGT
GATACCAGCAAAGAGTAAGGTCTATGATAGCCAGGGTCTCCTGATTTTTAGTGGGATGGACCTCTGTGAC
TGCCTGGATGAAGACTGCTTAGGATGTTTCTATGCTTGTCTGCTGCTGTGGTTCTACCAAGTGTGGAGCTG
AATGCCGCTGTGACCGCAAGTGGCTGTATGAGCAAATTTGAAATTTGAAGGAGGAGAAATAATTCATAATAA
ACATGCTGGA

ACGCGTACGCGGCCGCTCGAGCAGAAACTCATCTCAGAAGAGGATCTGGCAGCAAATGATATCCTGGATT
ACAAGGATGACGACGATAAGGTTTAA



[View online »](#)

Protein Sequence: >RC208413 protein sequence
 Red=Cloning site Green=Tags(s)

MMDPCSVGVQLRTTNECHKTYTRHTGFKTLQELSSNDMLLLQLRTGMTLSGNNTICFHVKIYIDRFED
 LQKSCDPFNIHKKLAKKNLHVIDLDDATFLSAKFGRLVPGWKLCPKCTQIINGSVDVDTEDRQKRKPE
 SDGRTAKALRSLQFTNPGRQTEFAPETGKREKRRRLTKNATAGSDRQVIPAKSKVYDSQGLLIFSGMDLCD
 CLDEDCLGCFYACPGSTKCGAECRCRDKWLYEQIEIEGGEIIHNKHAG

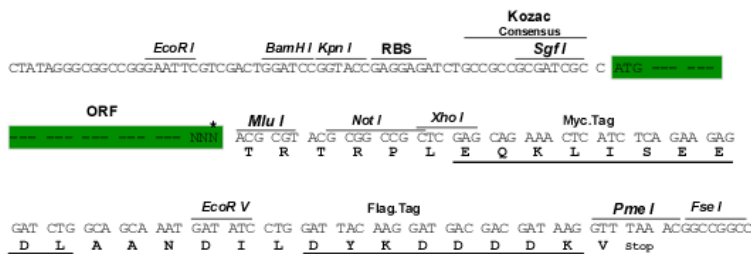
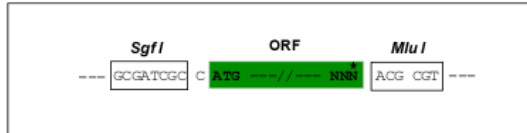
TRTRPLEQKLISEEDLAANDILDYKDDDDKV

Chromatograms: https://cdn.origene.com/chromatograms/mk6350_h10.zip

Restriction Sites: SgfI-MluI

Cloning Scheme:

Cloning sites used for ORF Shuttling:



* The last codon before the Stop codon of the ORF

ACCN: NM_152316

ORF Size: 780 bp

OTI Disclaimer: The molecular sequence of this clone aligns with the gene accession number as a point of reference only. However, individual transcript sequences of the same gene can differ through naturally occurring variations (e.g. polymorphisms), each with its own valid existence. This clone is substantially in agreement with the reference, but a complete review of all prevailing variants is recommended prior to use. [More info](#)

OTI Annotation: This clone was engineered to express the complete ORF with an expression tag. Expression varies depending on the nature of the gene.

Components: The ORF clone is ion-exchange column purified and shipped in a 2D barcoded Matrix tube containing 10ug of transfection-ready, dried plasmid DNA (reconstitute with 100 ul of water).

Reconstitution Method:

1. Centrifuge at 5,000xg for 5min.
2. Carefully open the tube and add 100ul of sterile water to dissolve the DNA.
3. Close the tube and incubate for 10 minutes at room temperature.
4. Briefly vortex the tube and then do a quick spin (less than 5000xg) to concentrate the liquid at the bottom.
5. Store the suspended plasmid at -20°C. The DNA is stable for at least one year from date of shipping when stored at -20°C.

RefSeq: [NM_152316.3](#)

RefSeq Size: 2395 bp

RefSeq ORF: 783 bp

Locus ID: 120534

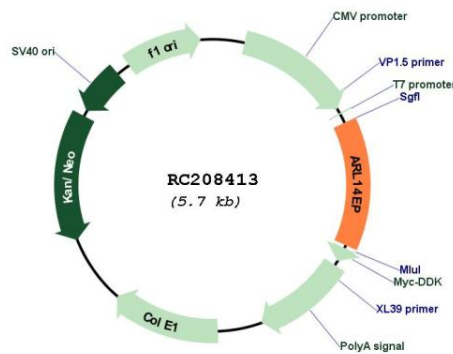
UniProt ID: [Q8N8R7](#)

Cytogenetics: 11p14.1

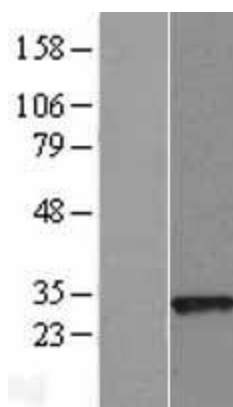
MW: 29.3 kDa

Gene Summary: The protein encoded by this gene is an effector protein. It interacts with ADP-ribosylation factor-like 14 [ARL14, also known as ADP-ribosylation factor 7 (ARF7)], beta-actin (ACTB) and actin-based motor protein myosin 1E (MYO1E). ARL14 is a small GTPase; it controls the export of major histocompatibility class II molecules by connecting to the actin network via this effector protein. [provided by RefSeq, Sep 2014]

Product images:



Circular map for RC208413



Western blot validation of overexpression lysate (Cat# [LY407642]) using anti-DDK antibody (Cat# [TA50011-100]). Left: Cell lysates from untransfected HEK293T cells; Right: Cell lysates from HEK293T cells transfected with RC208413 using transfection reagent MegaTran 2.0 (Cat# [TT210002]).



Coomassie blue staining of purified ARL14EP protein (Cat# [TP308413]). The protein was produced from HEK293T cells transfected with ARL14EP cDNA clone (Cat# RC208413) using MegaTran 2.0 (Cat# [TT210002]).