

Product datasheet for **RC208411**

ZFP38 (ZSCAN21) (NM_145914) Human Tagged ORF Clone

Product data:

Product Type:	Expression Plasmids
Product Name:	ZFP38 (ZSCAN21) (NM_145914) Human Tagged ORF Clone
Tag:	Myc-DDK
Symbol:	ZFP38
Synonyms:	NY-REN-21; Zipro1; ZNF38
Mammalian Cell Selection:	Neomycin
Vector:	pCMV6-Entry (PS100001)
E. coli Selection:	Kanamycin (25 ug/mL)



[View online »](#)

ORF Nucleotide Sequence:

>RC208411 ORF sequence
 Red=Cloning site Blue=ORF Green=Tags(s)

TTTTGTAATACGACTCACTATAGGGCGGCCGGGAATTCGTCGACTGGATCCGGTACCGAGGAGATCTGCC
 GCC**GCGATCGCC**

ATGATGACCAAGGTACTAGGCATGGCCCCAGTTCTGGCCCTAGGCCTCCACAGGAGCAGGTGGGGCCTC
 TGATGGTAAAAGTCGAGGAGAAAGAAGAGAAAGGCAAGTACCTTCTAGCCTGGAGATGTTCCGCCAGCG
 CTTCAGGCAGTTTGGGTACCATGATACCCTGGACCCGAGAGGCCCTGAGCCAACCTCCGGGTGCTCTGC
 TGTGAGTGGCTGAGGCCGAGATCCACACCAAGGAGCAGATCCTGGAGCTACTGGTGTGGAGCAGTTCC
 TGACCATCCTGCCAGGAGCTCCAGGCCTGGGTGCAGGAGCATTGCCGGAGAGCGCTGAAGAGGCTGT
 CACTCTCCTCGAAGATCTGGAGCGGAACTGGATGAGCCAGGACACCAGGTCTCAACTCTCCAAACGAA
 CAGAAACCGGTGTGGGAGAAGATATCCTCCTCAGGAAGTCAAAGGAATCCCGAGCAGCATGCAGCCAC
 AGCCCTTGAGACAGTCACAAATACGAGTCTTGGGGGCCCTGTACATCCAAGAGTCTGGTGAGGAGCA
 GGAGTTTCGCTCAAGATCCAAGAAAGGTCGAGATTGCAGATTGAGTACCCAGCAGGAAATCAGCAGAT
 GAGCAGAAAGTTCTGAAGCAGAGGGGCTCAAAGGGGATATAATTTCTGTGATTATCGCCAATAAACCTG
 AGGCCAGCTTAGAGAGGCAGTGCCTAAACCTTGAAAATGAAAAAGGAACAAAACCCCTCTTCAAGAGGC
 AGGCTCCAAGAAAGGTAGAGAATCAGTTCTACTAAACCTACCCAGGAGAGAGACGTTATATATGTGCT
 GAATGTGGCAAAGCCTTTAGTAATAGCTCAAATCTCACCAAACACAGGAGAACACACACTGGGGAGAAAC
 CTTACGTGTGCACCAAGTGTGGGAAAGCTTTCAGCCACAGCTCAAACCTCACCTCCACTACAGAACACA
 CTTGGTGGACCGCCCTATGACTGTAAGTGTGGAAAAGCTTTGGGCAGAGCTCAGACCTTCTTAAACAT
 CAGAGAATGCACACAGAAGAGGCCCATATCAGTGCAGAAAGATTGTGGCAAGGCTTTCAGCGGAAAGGCA
 GCCTCATTGTCCTACTATCGGATCCACACTGGGGAGAAGCCTTATCAGTGTAAACGAATGTGGGAAGGCTT
 CAGTCAGCATGCGGGCCTCAGCTCCACCAGAGACTCCACACCGAGAGAGCCATATAAGTGTAAAGGAG
 TGTGGGAAAGCCTTCAACCACAGCTCCAACCTCAATAAACACCACAGAATCCACACCGGGGAAAAGCCTT
 ACTGGTGTCACTACTGTGAAAGACCTTCTGTAGCAAGTCCAATCTTCCAAACATCAGCGAGTCCACAC
 TGGAGAGGGAGAAGCACCG

ACGCGTACGCGGCCGCTCGAGCAGAAACTCATCTCAGAAGAGGATCTGGCAGCAATGATATCCTGGATT
 ACAAGGATGACGACGATAAGGTTTAA

Protein Sequence:

>RC208411 protein sequence
 Red=Cloning site Green=Tags(s)

MMTKVLGMAPVLGPRPPQEQVGPLMVKVEEKEEKGYLPSLEMFQRFRQFGYHDTPGPREALSQRLVLC
 CEWLRPEIHTKEQILELLVLEQFLTILPQELQAWVQEHCPESAEEAVTLLEDLERELDEPGHQVSTPPNE
 QKPVWEKISSSGTAKESPSSMQPQPLETSHKYESWGPLYIQESGEEQEF AQDPRKVRDCRLSTQHEESAD
 EQKGSEAEGLKGDII SVIIANKPEASLERQCVNLENEKGTKPPLQEAGSKKGRESVPTKPTPGERRYICA
 ECGKAFSNSSNLTKHRRHTHTEKPYVCTKCGKAFSHSSNLTLYRTHLVDRPYDCKCGKAFQSSDLLKH
 QRMHTEEAPYQCKDCGKAFSGKGSIRHYRIHTGEKPYQCNECGKFSQHAGLSSHQRLHTGEKPYKCKE
 CGKAFNHSSNFKHRIHTGEKPYWCHHCCKTFCSSKSNLSKHQRVHTGEGEAP

TRTRPLEQKLI SEEDLAANDILDYKDDDDKV

Chromatograms:

https://cdn.origene.com/chromatograms/mk6347_a05.zip

Restriction Sites:

Sgfl-MluI

Cloning Scheme:


ACCN: NM_145914

ORF Size: 1419 bp

OTI Disclaimer: The molecular sequence of this clone aligns with the gene accession number as a point of reference only. However, individual transcript sequences of the same gene can differ through naturally occurring variations (e.g. polymorphisms), each with its own valid existence. This clone is substantially in agreement with the reference, but a complete review of all prevailing variants is recommended prior to use. [More info](#)

OTI Annotation: This clone was engineered to express the complete ORF with an expression tag. Expression varies depending on the nature of the gene.

Components: The ORF clone is ion-exchange column purified and shipped in a 2D barcoded Matrix tube containing 10ug of transfection-ready, dried plasmid DNA (reconstitute with 100 ul of water).

- Reconstitution Method:**
1. Centrifuge at 5,000xg for 5min.
 2. Carefully open the tube and add 100ul of sterile water to dissolve the DNA.
 3. Close the tube and incubate for 10 minutes at room temperature.
 4. Briefly vortex the tube and then do a quick spin (less than 5000xg) to concentrate the liquid at the bottom.
 5. Store the suspended plasmid at -20°C. The DNA is stable for at least one year from date of shipping when stored at -20°C.

RefSeq: [NM_145914.3](#)

RefSeq Size: 2005 bp

RefSeq ORF: 1422 bp

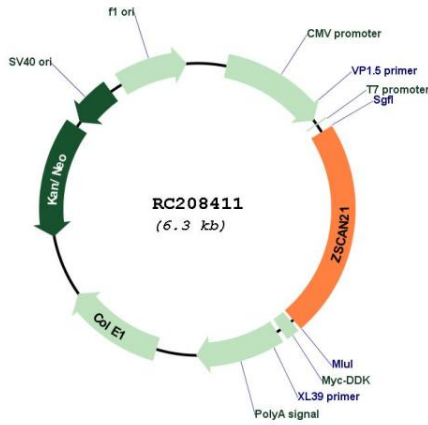
Locus ID: 7589

UniProt ID: [Q9Y5A6](#)

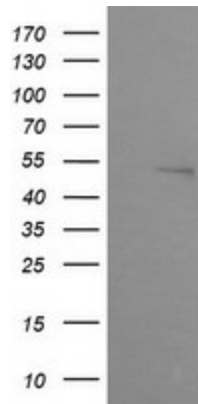
Cytogenetics: 7q22.1

Protein Families: Transcription Factors
MW: 53.7 kDa
Gene Summary: Strong transcriptional activator.[UniProtKB/Swiss-Prot Function]

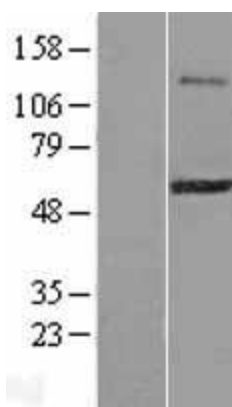
Product images:



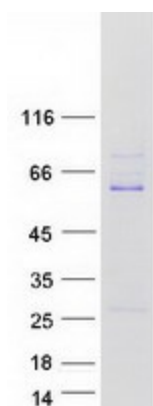
Circular map for RC208411



HEK293T cells were transfected with the pCMV6-ENTRY control (Cat# [PS100001], Left lane) or pCMV6-ENTRY ZSCAN21 (Cat# RC208411, Right lane) cDNA for 48 hrs and lysed. Equivalent amounts of cell lysates (5 ug per lane) were separated by SDS-PAGE and immunoblotted with anti-ZSCAN21(Cat# [TA506118]). Positive lysates [LY407804] (100ug) and [LC407804] (20ug) can be purchased separately from OriGene.



Western blot validation of overexpression lysate (Cat# [LY407804]) using anti-DDK antibody (Cat# [TA50011-100]). Left: Cell lysates from untransfected HEK293T cells; Right: Cell lysates from HEK293T cells transfected with RC208411 using transfection reagent MegaTran 2.0 (Cat# [TT210002]).



Coomassie blue staining of purified ZSCAN21 protein (Cat# [TP308411]). The protein was produced from HEK293T cells transfected with ZSCAN21 cDNA clone (Cat# RC208411) using MegaTran 2.0 (Cat# [TT210002]).