

Product datasheet for **RC208410L4V**

EMP1 (NM_001423) Human Tagged ORF Clone Lentiviral Particle

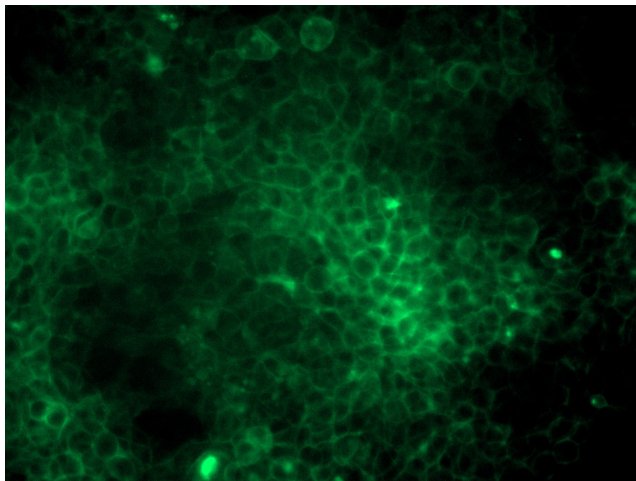
Product data:

Product Type:	Lentiviral Particles
Product Name:	EMP1 (NM_001423) Human Tagged ORF Clone Lentiviral Particle
Symbol:	EMP1
Synonyms:	CL-20; EMP-1; TMP
Mammalian Cell Selection:	Puromycin
Vector:	pLenti-C-mGFP-P2A-Puro (PS100093)
Tag:	mGFP
ACCN:	NM_001423
ORF Size:	471 bp
ORF Nucleotide Sequence:	The ORF insert of this clone is exactly the same as(RC208410).
OTI Disclaimer:	The molecular sequence of this clone aligns with the gene accession number as a point of reference only. However, individual transcript sequences of the same gene can differ through naturally occurring variations (e.g. polymorphisms), each with its own valid existence. This clone is substantially in agreement with the reference, but a complete review of all prevailing variants is recommended prior to use. More info
OTI Annotation:	This clone was engineered to express the complete ORF with an expression tag. Expression varies depending on the nature of the gene.
RefSeq:	NM_001423.1
RefSeq Size:	2804 bp
RefSeq ORF:	474 bp
Locus ID:	2012
UniProt ID:	P54849
Cytogenetics:	12p13.1
Domains:	PMP22_Claudin
Protein Families:	Transmembrane


[View online »](#)

MW: 17.6 kDa

Product images:



[RC208410L4] was used to prepare Lentiviral particles using [TR30037] packaging kit. HEK293T cells were transduced with RC208410L4V particle to overexpress human EMP1-mGFP fusion protein.