

## Product datasheet for **RC208406**

### **DVL1 (NM\_182779) Human Tagged ORF Clone**

#### **Product data:**

Product Type:	Expression Plasmids
Product Name:	DVL1 (NM_182779) Human Tagged ORF Clone
Tag:	Myc-DDK
Symbol:	DVL1
Synonyms:	dishevelled, dsh homolog 1 (Drosophila); dishevelled 1; dishevelled 1 (homologous to Drosophila dsh); DVL; DVL, MGC54245; MGC54245; OTTHUMP00000003104
Mammalian Cell Selection:	Neomycin
Vector:	pCMV6-Entry (PS100001)
E. coli Selection:	Kanamycin (25 ug/mL)



[View online »](#)

**ORF Nucleotide Sequence:**

>RC208406 ORF sequence  
 Red=Cloning site Blue=ORF Green=Tags(s)

TTTTGTAATACGACTCACTATAGGGCGGCCGGAATTCGTCGACTGGATCCGGTACCGAGGAGATCTGCC  
 GCC**CGATCGCC**

ATGGCGGAGACCAAGATTATCTACCACATGGACGAGGAGAGACGCCGTACCTGGTCAAGCTGCCCGTGG  
 CCCCCGAGCGCGTCACGCTGGCCGACTTCAAGAACGTGCTCAGCAACCGGCCCGTGCACGCCTACAATT  
 CTTCTTTAAGTCCATGGACCAGGACTTCGGGGTGGTGAAGGAGGAGATCTTTGATGACAATGCCAAGCTT  
 CCCTGTTCAACGGCCGCGTGGTCTCCTGGCTGGTCTGGCTGAGGGTGGTCACTCGGATGCGGGGTCCC  
 AGGGCACGGACAGCCACACAGACCTGCCCCGCTCTTGAGCGGACAGGCGGCATCGGGGACTCCCGGCC  
 CCCCTCCTCCACCCGAATGTGGCCAGCAGCCGTGACGGGATGGACAACGAGACAGGCACGGAGTCCATG  
 GTCAGTACCGGGCGGAGCGTCCCGACGCCGGAACCGGAGGAGGCCCGCGGACCAATGGCACCCAA  
 GGGGAGACCGACGGCGGATGTGGGGCTGCCCCAGACAGCGCTCCACCGCCCTCAGCAGCGAGCTTGA  
 GTCCAGCAGCTTTGTGGACTCGGACGAGGATGGCAGCAGCAGCAGCTCAGCAGCTCCACGGAGCAGAGC  
 ACCTCATCCAGACTCACCCGGAAGTACGCCAGCAGCTTGCTGAAGCACGGCTTCCTGCGGCACACGGTCA  
 ACAAGATCACCTTCTCCGAGCAGTGTACTACGTCTTCGGGGATCTCTGCAGCAATCTCGCCACCCTGAA  
 CCTCAACAGTGGCTCCAGTGGGACTTCGGATCAGGACACGCTGGCCCCGCTGCCCAACCCGGCTGCCCC  
 TGGCCTCTGGGTGAGGCTACCCCTACCAGTACCCGGACCCCCACCCTGCTTCCCGCTGCCTACCAGG  
 ACCCGGGCTTTAGCTATGGCAGCGGCAGCACCGGGAGTCAAGCAGAGTGAAGGGAGCAAAGCAGTGGGTC  
 CACCCGGAGCAGCCCGGGCCCCGGCCGTGAGAAGGAGCGTCGGGCGGCGGAGCTGGGGCAGTGGC  
 AGTGAATCGGATCACACGGCACCGAGTGGGGTGGGAGCAGCTGGCGAGAGCGTCCGGCCGGCCAGCTCA  
 GCCGTGGCAGCAGCCACGCAGTCAAGCCTCGGCTACCGCCCCGGGGCTCCCCCGCCCCACCCACGCA  
 CAAGGCCATACAGTGGTGGGGGGCCACCCGGGGGACCCCTGTCCGGGAGCTGGCTGCCGTCCCCCGG  
 GAATTGACAGGCAGCCGACGCTCTCCAGAAGGCTATGGGAACCCCTGCGAGTCTTCGTGGACATCA  
 TG

**ACGCGT**ACGCGGCCGCTCGAGCAGAACTCATCTCAGAAGAGGATCTGGCAGCAAATGATATCCTGGATT  
 ACAAGGATGACGACGATAAGGTTTAA

**Protein Sequence:**

>RC208406 protein sequence  
 Red=Cloning site Green=Tags(s)

MAETKIIYHMDEEETPYLVKLPVAPERVTLADFKNVLNRPVHAYKFFFKSMDQDFGVVKEEIFDDNAKL  
 PCFNGRVVSWLVLAEHAHSDAGSQGTDSDLDLPPPLERTGGIGDSRPPSFHPNVASSRDGMDNETGTESM  
 VSHRRERARRRNREEAARTNGHPRGDRRRDVGLPPDSASTALSSELESSSFVDSDEDGSTRSSSTEQS  
 TSSRLTRKYASSLLKHGFLRHTVKNITFSEQYVFGDLCSNLATLNLNSGSSGTSQDQTLAPLPHPAAP  
 WPLGQGYPYQYPPPCFPAYQDPGFSYSGSTGSQQSEGSKSSGSTRSRRAPGREKERRAAGAGGSG  
 SESDHTAPSGVGSWRERPAQQLSRGSSPRSASATAPGLPPPHTTKAYTVVGGPPGPPVRELAAVPP  
 ELTGSRSQSFQKAMGNPCEFFVDIM

**TRTRPLEQKLISEEDLAANDILDYKDDDDKV**

**Chromatograms:**

[https://cdn.origene.com/chromatograms/mk6350\\_a02.zip](https://cdn.origene.com/chromatograms/mk6350_a02.zip)

**Restriction Sites:**

Sgfl-Mlul

**Cloning Scheme:**


**ACCN:** NM\_182779

**ORF Size:** 1332 bp

**OTI Disclaimer:** The molecular sequence of this clone aligns with the gene accession number as a point of reference only. However, individual transcript sequences of the same gene can differ through naturally occurring variations (e.g. polymorphisms), each with its own valid existence. This clone is substantially in agreement with the reference, but a complete review of all prevailing variants is recommended prior to use. [More info](#)

**OTI Annotation:** This clone was engineered to express the complete ORF with an expression tag. Expression varies depending on the nature of the gene.

**Components:** The ORF clone is ion-exchange column purified and shipped in a 2D barcoded Matrix tube containing 10ug of transfection-ready, dried plasmid DNA (reconstitute with 100 ul of water).

**Reconstitution Method:**

1. Centrifuge at 5,000xg for 5min.
2. Carefully open the tube and add 100ul of sterile water to dissolve the DNA.
3. Close the tube and incubate for 10 minutes at room temperature.
4. Briefly vortex the tube and then do a quick spin (less than 5000xg) to concentrate the liquid at the bottom.
5. Store the suspended plasmid at -20°C. The DNA is stable for at least one year from date of shipping when stored at -20°C.

**RefSeq:** [NM\\_182779.2](#), [NP\\_877580.1](#)

**RefSeq Size:** 2266 bp

**RefSeq ORF:** 1334 bp

**Locus ID:** 1855

**Cytogenetics:** 1p36.33

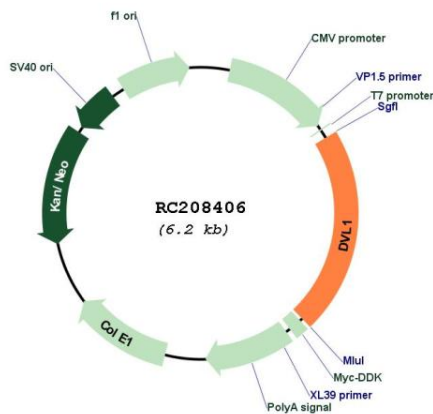
**Protein Families:** Druggable Genome, ES Cell Differentiation/IPS

**Protein Pathways:** Basal cell carcinoma, Colorectal cancer, Melanogenesis, Notch signaling pathway, Pathways in cancer, Wnt signaling pathway

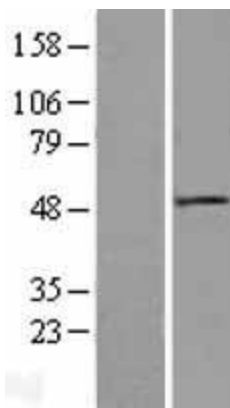
**MW:** 47.7 kDa

**Gene Summary:** DVL1, the human homolog of the Drosophila dishevelled gene (dsh) encodes a cytoplasmic phosphoprotein that regulates cell proliferation, acting as a transducer molecule for developmental processes, including segmentation and neuroblast specification. DVL1 is a candidate gene for neuroblastomatous transformation. The Schwartz-Jampel syndrome and Charcot-Marie-Tooth disease type 2A have been mapped to the same region as DVL1. The phenotypes of these diseases may be consistent with defects which might be expected from aberrant expression of a DVL gene during development. [provided by RefSeq, Jul 2008]

**Product images:**



Circular map for RC208406



Western blot validation of overexpression lysate (Cat# [LY405356]) using anti-DDK antibody (Cat# [TA50011-100]). Left: Cell lysates from untransfected HEK293T cells; Right: Cell lysates from HEK293T cells transfected with RC208406 using transfection reagent MegaTran 2.0 (Cat# [TT210002]).