

Product datasheet for **RC208402**

RBMY1A1 (NM_001007526) Human Tagged ORF Clone

Product data:

Product Type:	Expression Plasmids
Product Name:	RBMY1A1 (NM_001007526) Human Tagged ORF Clone
Tag:	Myc-DDK
Symbol:	RBMY1A1
Synonyms:	RBM1, RBM2, RBMY, YRRM1, YRRM2
Mammalian Cell Selection:	Neomycin
Vector:	pCMV6-Entry (PS100001)
E. coli Selection:	Kanamycin (25 ug/mL)
ORF Nucleotide Sequence:	>RC208402 ORF sequence Red=Cloning site Blue=ORF Green=Tags(s)

TTTTGTAATACGACTCACTATAGGGCGGCCGGAATTCGTCGACTGGATCCGGTACCGAGGAGATCTGCC
GCC**CGGATCGCC**

ATGAGTTATTCTAGGGGACTCATTCCAGTTAAAAGAGGTCCATCTTCAAGAAGTGGAGGTCTCCTCCGA
AAAAATCTGCTCCTTCTGCTGTGGCAAGAAGCAATAGTTGGATGGGAAGCCAAGGTCCCATGTCACAAAG
AAGAGAGAATTATGGAGTTCCTCCACGCAGAGCGACAATATCTTCTGGAGAAATGATCGCATGTCAACA
AGACATGATGGTTATGCAACTAACGATGGAATCATCCAAGTTGCCAAGAAACGAGGGATTATGCTCCAC
CATCTAGAGGCTATGCATACCGTGATAATGGTCATTCTAATCGGGATGAACATTCCTCTAGAGGATATAG
AAATCATCGAAGTCCCGAGAACTAGGGATTATGCTCCACCATCTAGAGGCCATGCATACCGTGATTAT
GGTCATTCCTCGTCGGGATGAAAGTTATTCTAGAGGATACAGAAATCGTCGAAGTCCCGAGAAACTAGGG
AGTATGCTCCACCATCTAGAGGCCATGGATACCGTGATTATGGTCATTCTCGTCGACATGAAAGTTATTC
TAGAGGATATAGAAATCATCCAAGTCCCGAGAAACCAGGGATTATGCTCCACCACATAGAGACTATGCA
TACCGTGATTATGGTCATTCTAGTTGGGATGAACATTCCTCTAGAGGATATAGTTATCATGATGGCTACG
GTGAGGCCCTTGGTAGAGATCATTCTGAACATCTAAGTGAAGTCTTATAGAGATGCACCTCAGAGATA
CGGGACCTCTCATGGTGCACCACCTGCAAGAGGGCCTCGGATGTCTTATGGTGAAGCACCTGCCACGCA
TATAGTAATACAGGATAGATATGGCAGAAGTTGGGAGAGTTACTCGAGCTGTGGTGATTTTCATTATT
GTGATCGTGAGCATGTTTGCAGAAAAGACCAAAGGAATCCGCCTTCTCTGGGTAGGGTGCTCCCTGATCC
TCGTGAAGCATGTGGTAGCTCAAGTTATGTGGCATCTATAGTAGATGGTGGGAGAGTTCGATCTGAAAAA
GGAGACTCGAGCAGATAT

ACGCGTACGCGGCCGCTCGAGCAGAACTCATCTCAGAAGAGGATCTGGCAGCAAATGATATCCTGGATT
ACAAGGATGACGACGATAAGGTTTAA



[View online »](#)

Protein Sequence: >RC208402 protein sequence
Red=Cloning site Green=Tags(s)

MSYSRGLIPVKRGPPSSRSGGPPPKKSAPSAVARSNSWMGSGQPMQSRRENYGVPPRRATISSWRNDRMST
 RHDGYATNDGNHPSCQETRDYAPPSRGYAYRDNGHSNRDEHSSRGYRNHRSSRETRDYAPPSRGHAYRDY
 GHSRRDESYSRGYRNRRSSRETREYAPPSRGHG YRDYGHSSRRHESYSRGYRNHPSSRETRDYAPPHRDYA
 YRDYGHSSWDEHSSRGYSYHDGYGEALGRDHSEHL SGSSYRDALQRYGTSHGAPPARGPRMSYGGSTCHA
 YSNTRDRYGRSWESYSSCGDFHYCDREHVC RKDQRNPPSLGRVLPDPREACGSSSYVASIVDGGESRSEK
 GDSSRY

TRTRPLEQKLISEEDLAANDILDYKDDDDKV

Chromatograms: https://cdn.origene.com/chromatograms/mk6532_c03.zip

Restriction Sites: SgfI-MluI

Cloning Scheme:



* The last codon before the Stop codon of the ORF

ACCN: NM_001007526

ORF Size: 1068 bp

OTI Disclaimer: The molecular sequence of this clone aligns with the gene accession number as a point of reference only. However, individual transcript sequences of the same gene can differ through naturally occurring variations (e.g. polymorphisms), each with its own valid existence. This clone is substantially in agreement with the reference, but a complete review of all prevailing variants is recommended prior to use. [More info](#)

OTI Annotation: This clone was engineered to express the complete ORF with an expression tag. Expression varies depending on the nature of the gene.

Components: The ORF clone is ion-exchange column purified and shipped in a 2D barcoded Matrix tube containing 10ug of transfection-ready, dried plasmid DNA (reconstitute with 100 ul of water).

Reconstitution Method:

1. Centrifuge at 5,000xg for 5min.
2. Carefully open the tube and add 100ul of sterile water to dissolve the DNA.
3. Close the tube and incubate for 10 minutes at room temperature.
4. Briefly vortex the tube and then do a quick spin (less than 5000xg) to concentrate the liquid at the bottom.
5. Store the suspended plasmid at -20°C. The DNA is stable for at least one year from date of shipping when stored at -20°C.

RefSeq: [NM_001007526.1](#), [NP_001007527.1](#)

RefSeq Size: 1793 bp

RefSeq ORF: 1070 bp

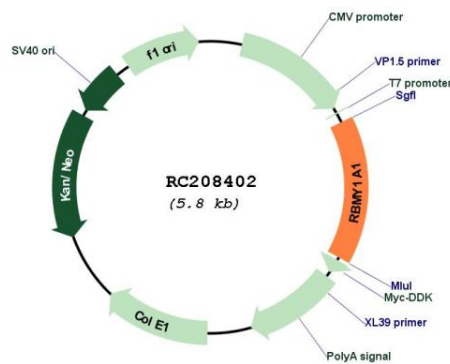
Locus ID: 5940

Cytogenetics: Yq11.223

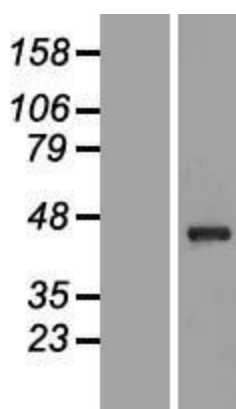
MW: 40.7 kDa

Gene Summary: This gene encodes a protein containing an RNA-binding motif in the N-terminus and four SRGY (serine, arginine, glycine, tyrosine) boxes in the C-terminus. This protein is thought to function as a splicing regulator during spermatogenesis. Multiple closely related paralogs of this gene are found in a gene cluster in the AZFb azoospermia factor region of chromosome Y. Most of these related copies are thought to be pseudogenes, though several likely encode functional proteins. [provided by RefSeq, Mar 2016]

Product images:



Circular map for RC208402



Western blot validation of overexpression lysate (Cat# [LY423496]) using anti-DDK antibody (Cat# [TA50011-100]). Left: Cell lysates from untransfected HEK293T cells; Right: Cell lysates from HEK293T cells transfected with RC208402 using transfection reagent MegaTran 2.0 (Cat# [TT210002]).