

## Product datasheet for **RC208400**

### CD239 (BCAM) (NM\_005581) Human Tagged ORF Clone

#### Product data:

Product Type:	Expression Plasmids
Product Name:	CD239 (BCAM) (NM_005581) Human Tagged ORF Clone
Tag:	Myc-DDK
Symbol:	CD239
Synonyms:	AU; CD239; LU; MSK19
Mammalian Cell Selection:	Neomycin
Vector:	pCMV6-Entry (PS100001)
E. coli Selection:	Kanamycin (25 ug/mL)



[View online »](#)

**ORF Nucleotide Sequence:**

>RC208400 ORF sequence  
 Red=Cloning site Blue=ORF Green=Tags(s)

TTTTGTAATACGACTCACTATAGGGCGGCCGGGAATTCGTCGACTGGATCCGGTACCGAGGAGATCTGCC  
 GCC**CGCATCGCC**

ATGGAGCCCCCGACGCACCGGCCAGGCGCGGGGCCCGCGGCTGCTGTTGCTCGCAGTCTGTGG  
 CGGCGCACCCAGATGCCAGGCGGAGGTGCGCTTGTGTACCCCGCTGGTGGAGGTGATGCGAGGAAA  
 GTCTGTCAATTCTGGACTGCACCCCTACGGGAACCCACGACCATTATATGCTGGAATGGTTCTTACCGAC  
 CGCTCGGGAGCTCGCCCCGCTAGCCTCGGCTGAGATGCAGGGCTCTGAGCTCCAGGTCACAATGCACG  
 ACACCCGGGGCCGAGTCCCCATACCAGCTGGACTCCAGGGCGCCTGGTGTGGCTGAGGCCAGGT  
 GGGCGACGAGCGAGACTACGTGTGCGTGGTGGGGCAGGGCGGCAGGCACTGCTGAGGCCACTGCGCGG  
 CTCAACGTGTTTCAAAGCCAGAGGCCACTGAGGTCTCCCCAACAAAGGGACACTGTCTGTGATGGAGG  
 ACTCTGCCAGGAGATCGCCACCTGCAACAGCCGGAACGGGAACCCGGCCCCAAGATCACGTGGTATCG  
 CAACGGCAGCGCTGGAGGTGCCGTAGAGATGAACCCAGAGGGCTACATGACCAGCCGACGGTCCGG  
 GAGGCCTCGGGCCTGCTCTCCCTCACCAGCACCTCTACCTGCGGCTCCGCAAGGATGACCGAGACGCCA  
 GCTTCCACTGCGCCGCCACTACAGCTGCCAGGGCCGCCACGGCCGCTGGACAGCCCCACCTTCCA  
 CCTCACCTGCACTATCCACGGAGCACGTGCAGTTCTGGGTGGGAGCCGTCACCCAGCAGGCTGG  
 GTACGCGAGGGTGACTGTCCAGCTGCTCTGCCGGGGGACGGCAGCCCCAGCCCGGAGTATACGCTTT  
 TCCGCCTTCAGGATGAGCAGGAGGAAGTCTGAATGTGAATCTCGAGGGAACTTGACCTGGAGGGAGT  
 GACCCGGGGCCAGAGCGGACCTATGGCTGCAGAGTGGAGGATTACGACGCGGAGATGACGTGCAGCTC  
 TCCAAGACGCTGGAGCTGCGCGTGGCCTATCTGGACCCCTGGAGCTCAGCGAGGGGAAGGTGCTTTCCT  
 TACCTCTAAACAGCAGTGCAGTCTGAACTGCTCCGTGCACGGCCTGCCACCCCTGCCACTGCGGAC  
 CAAGGACTCCACTCCCCTGGGCGATGGCCCATGCTGTCGCTCAGTTCTATCACCTTCGATTCCAATGGC  
 ACCTACGTATGTGAGGCCTCCCTGCCACAGTCCCGTCTCAGCCGACCCAGAACTTCACGCTGCTGG  
 TCCAAGGCTCGCCAGAGCTAAAGACAGCGGAAATAGAGCCCAAGGCAGATGGCAGCTGGAGGGAAGGAGA  
 CGAAGTCACTCATCTGCTCTGCCCGCGGCCATCCAGACCCAAACTCAGCTGGAGCCAATTGGGGGGC  
 AGCCCCGAGAGCCAATCCCGGACGGCAGGGTGGGTGAGCAGCTCTTGACCTGAAAGTGACCAGCG  
 CCCTGAGCCGGATGGCATCTCCTGTGAAGCCTCAACCCACGGGAACAAGCGCCATGTCTTCCACTT  
 CGGCACCGTGAGCCCCAGACCTCCAGGCTGGAGTGGCCGTATGGCCGTGGCCGTGAGCGTGGCCCTC  
 CTGCTCCTCGTCTGTCTTCTACTGCGTGGAGCAGCAAGGGGGCCCTGCTGCCGCCAGCGGGGG  
 AGAAGGGGGCTCCGCGCCAGGGGAGCCAGGGCTGAGCCACTCGGGTCCGAGCAACCAGAGCAGACCGG  
 CCTTCTCATGGAGGTGCCTCCGGAGGAGCCAGGGGTGGCAGCGGGGGCTTCGGAGACGAGTGC

**ACGCGT**ACGCGGCCGCTCGAGCAGAACTCATCTCAGAAGAGGATCTGGCAGCAAATGATATCCTGGATT  
 ACAAGGATGACGACGATAAGGTTTAA

**Protein Sequence:**

>RC208400 protein sequence  
 Red=Cloning site Green=Tags(s)

MEPPDAPAQARGAPRLLLLAVLLAAHPDAQAEVRLSVPPLVEVMRGKSVILDCTPTGTHDHMLEWFLTD  
 RSGARPRLASAEMQGSELQVTMHDTRGRSPPYQLDSQGRVLAEAVQVGDERTYVVCVVRAGAAGTAEATAR  
 LNVFAKPEATEVSPNKGTL SVMEDSAQE IATCNSRNGNPAPKITWYRNGQRLEVPVEMNPEGYMTSRTVR  
 EASGLLSLTSTLYLRLRKDDRDASFHCAAHYSLPEGRHGRLDSPTFHLTLHYPTHEHVQFWGSPSTPAGW  
 VREGDTVQLLCRGDGSPEYTLFRLQDEQEEVLNVNLEGNLTLEGVTRGQSGTYGCRVEDYDAADDVQL  
 SKTLELRVAYLDPLELSEGVLSLPLNSSAVVNCVHGLPTPALRWTKSTPLGDGPMPLSLSSITFDSNG  
 TYVCEASLPTVPVLSRTQNFLLVQGSPELKTAEIEPKADGSWREGDEVTLICARGHPDPKLSWSQLGG  
 SPAEPIPRQGWYSSSLTKVTSALSRDGISCEASNPHGKRVHVFHFGTVSPQTSQAGVAVMAVAVSVGL  
 LLLVVAVFYCVRKGGPCCRQRREKGA PPPGEPGLSHSGSEQPEQTGLLMGGASGGARGGSGGFDECD

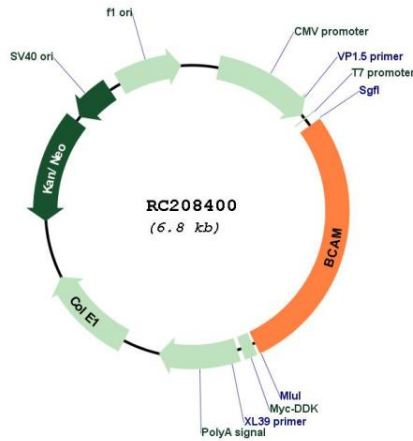
**TRTRPLEQKLI**SEEDLAANDILDYKDDDDK**V**



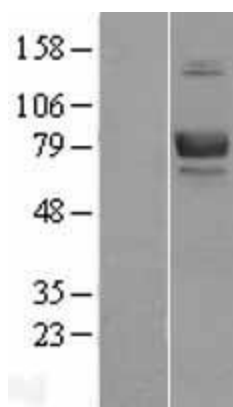
**Locus ID:** 4059  
**UniProt ID:** [P50895](#)  
**Cytogenetics:** 19q13.32  
**Protein Families:** Druggable Genome, Transmembrane  
**MW:** 67.4 kDa

**Gene Summary:** This gene encodes Lutheran blood group glycoprotein, a member of the immunoglobulin superfamily and a receptor for the extracellular matrix protein, laminin. The protein contains five extracellular immunoglobulin domains, a single transmembrane domain, and a short C-terminal cytoplasmic tail. This protein may play a role in epithelial cell cancer and in vaso-occlusion of red blood cells in sickle cell disease. Polymorphisms in this gene define some of the antigens in the Lutheran system and also the Auberger system. Inactivating variants of this gene result in the recessive Lutheran null phenotype, Lu(a-b-), of the Lutheran blood group. Two transcript variants encoding different isoforms have been found for this gene. [provided by RefSeq, May 2012]

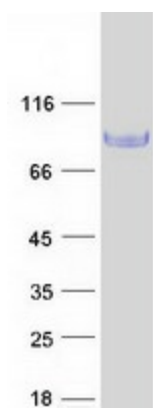
**Product images:**



Circular map for RC208400



Western blot validation of overexpression lysate (Cat# [LY417215]) using anti-DDK antibody (Cat# [TA50011-100]). Left: Cell lysates from untransfected HEK293T cells; Right: Cell lysates from HEK293T cells transfected with RC208400 using transfection reagent MegaTran 2.0 (Cat# [TT210002]).



Coomassie blue staining of purified BCAM protein (Cat# [TP308400]). The protein was produced from HEK293T cells transfected with BCAM cDNA clone (Cat# RC208400) using MegaTran 2.0 (Cat# [TT210002]).