

## Product datasheet for **RC208398**

### **Munc18c (STXBP3) (NM\_007269) Human Tagged ORF Clone**

#### **Product data:**

Product Type:	Expression Plasmids
Product Name:	Munc18c (STXBP3) (NM_007269) Human Tagged ORF Clone
Tag:	Myc-DDK
Symbol:	Munc18c
Synonyms:	MUNC18-3; MUNC18C; PSP; UNC-18C
Mammalian Cell Selection:	Neomycin
Vector:	pCMV6-Entry (PS100001)
E. coli Selection:	Kanamycin (25 ug/mL)



[View online »](#)

**ORF Nucleotide Sequence:**

>RC208398 ORF sequence  
 Red=Cloning site Blue=ORF Green=Tags(s)

TTTTGTAATACGACTCACTATAGGGCGGCCGGAATTCGTCGACTGGATCCGGTACCGAGGAGATCTGCC  
 GCCCGGATCGCC

ATGGCCGCCCGGTGGCAGAGAGGGGGCTAAAGAGCGTCGTGGCAGAAGATAAAAGCAACAGTGTTTG  
 ATGACTGCAAGAAAGAAGGCGAATGGAAGATAATGCTTTTAGATGAATTTACCACTAAGCTTTTGGCATC  
 GTGTTGCAAAATGACAGATCTTCTAGAAGAAGGTATTACTGTTGTAGAGAATATTTATAAGAACCGTGAA  
 CCTGTCAGACAAATGAAAGCTCTTTATTTCACTACTCCGACATCAAAGTCTGTAGATTGTTTCTTACATG  
 ATTTTGAAGTAAATCGGAGAACAAGTATAAAGCAGCATATTTACTTCACTGACTTTTGCCTGATAA  
 TCTCTTTAACAAAATTAAGGCTTCTGCTCCAAGTCAATAAGAAGATGTAAGAAATAAATATTTCTTTC  
 ATTCCACATGAATCTCAGGTGTACTCTTGATGTACCAGATGCATTCTATTACTGTTATAGTCCAGACC  
 CTGGTAATGCAAAGGGAAAAGATGCCATTATGAAACAATGGCTGACCAGATAGTTACAGTGTGTGCCAC  
 CTTGGATGAAAAATCCCGGAGTAAGATATAAAGTAAACCTCTAGATAATGCCAGTAAGCTTGCACAGCTT  
 GTTGAAAAAAGCTTGAAGACTACTACAAGATTGATGAAAAGAGCCTAATAAAGGGTAAAACTCATTAC  
 AGCTCTTAATAATTGATCGTGGCTTTGATCCTGTGTCCACTGTCCTGCATGAACTGACCTTTCAGGCAAT  
 GGCATATGATCTACTACCAATTGAGAATGATACATACAAATATAAAACAGATGAAAAAGAAAAGGAGGCC  
 ATCCTTGAAGAAGAAGATGACCTCTGGGTTAGAATTCGACATCGACATATTGCGGTTGTGTTAGAGGAAA  
 TTCCCAAGCTTATGAAAGAAATTCATCAACAAAGAAAGCAACAGAAGGAAAAGACATCACTTAGTGTCT  
 TACCCAGCTGATGAAAAAGATGCCCATTTCCGAAAACAGATTACTAAGCAAGTTGTCCATCTTAACTTA  
 GCAGAAGATTGCATGAATAAGTTCAAGCTTAATATAGAAAAGCTCTGCAAACTGAACAGGACCTGGCAC  
 TTGGAACGTGATGCAGAAGGACAGAAGTGAAGATTCCATGCGAGTACTCCTTCCAGTTCTACTCAACAA  
 AAATCATGATAATTGTGATAAAAATAAGAGCAATCTACTTTATATCTTCAGTATTAATGGAACTACGGAA  
 GAAAAATTTGGACAGGTTGATCCAGAATGTAAGATAGAAAATGAGAGTGACATGATTGTAAGTGGAGTT  
 ACCTTGGTGTCCATTGTTCCCAATCTCAACAAGGCAAACCGTTAAGAAAGGATCGGTCTGCAGAAGA  
 AACTTTTCAGCTCTCTCGGTGGACACCTTTTATCAAAGATATTATGGAGGATGCTATTGATAATAGATTA  
 GATTCAAAAGAATGGCCATATTGTTCCAGTGTCCAGCAGTATGGAATGGTTGAGGAGCTGTAAGTGCTC  
 GCCAGAAACCCAGAGCTAATTATTTAGAAGACCGAAAAAATGGGTCAAAGCTGATTGTTTTGTAATTGG  
 AGGGATCACATACTCTGAAGTGCCTGTGCTTATGAAGTTCTCAGGCACATAAATCCTGTGAAGTTATT  
 ATTGTTCTACACATGTTTTAACACCCAAAAAGCTGTTGGATGATATAAAGATGCTGAATAAACCCAAAG  
 ATAAAGTCTCCTAATTAAGATGAA

ACGCGTACGCGGCCGCTCGAGCAGAAACTCATCTCAGAAGAGGATCTGGCAGCAAATGATATCCTGGATT  
 ACAAGGATGACGACGATAAGGTTTAA

**Protein Sequence:**

>RC208398 protein sequence  
 Red=Cloning site Green=Tags(s)

MAPPVAERGLKSVVWQIKATVFDDCKKEGEWKIMLLDEFTTKLLASCCKMTDLLEEGITVVENIYKNRE  
 PVRQMKALYFITPTSKSVDCFLHDFASKSENKYKAAAYIYFTDFCPDNLFNKIKASCSKSI RRCKEINISF  
 IPHESQVYTLDPDAFYCYSPDPGNAKGKDAIMETMADQIVTVCATLDENPGVRYKSKPLDNASKLAQL  
 VEKKLEDYKIDEKSLIKGKTHSQLLIIDRGFDPVSTVLHELTFQAMAYDLLPIENDTYKYKTDGKEKEA  
 ILEEEDDLWVRIRHRHIAVVLEEI PKLMKEISSTKKATEGKTSLSALTQLMKMMPHFRKQITKQVHLNL  
 AEDCMNFKLNIIEKLC KTEQDLALGDAEGQVKDSMRVLLPVLLNKNHNDNCDKIRAILLYIFSINGTTE  
 ENLDRLIQNVKIEENS DMIRNWSYLGVP IVPQSQQGKPLRKDRSAEETFQLSRWTFPKIDIMEDIAIDNRL  
 DSKWPCYSCPAVWNGSGAVSARQKPRANYLED RKNKSKLIVFVIGGITYSEVRCAYEVSQAHKSECEVI  
 IGSTHVLTPKLLDDIKMLNPKDKVSLIKDE

TRTRPLEQKLISEEDLAANDILDYKDDDDKV

**Chromatograms:**

[https://cdn.origene.com/chromatograms/mk6224\\_f04.zip](https://cdn.origene.com/chromatograms/mk6224_f04.zip)

Restriction Sites: SgfI-MluI

Cloning Scheme:



ACCN: NM\_007269

ORF Size: 1776 bp

OTI Disclaimer: The molecular sequence of this clone aligns with the gene accession number as a point of reference only. However, individual transcript sequences of the same gene can differ through naturally occurring variations (e.g. polymorphisms), each with its own valid existence. This clone is substantially in agreement with the reference, but a complete review of all prevailing variants is recommended prior to use. [More info](#)

OTI Annotation: This clone was engineered to express the complete ORF with an expression tag. Expression varies depending on the nature of the gene.

Components: The ORF clone is ion-exchange column purified and shipped in a 2D barcoded Matrix tube containing 10ug of transfection-ready, dried plasmid DNA (reconstitute with 100 ul of water).

- Reconstitution Method:
1. Centrifuge at 5,000xg for 5min.
  2. Carefully open the tube and add 100ul of sterile water to dissolve the DNA.
  3. Close the tube and incubate for 10 minutes at room temperature.
  4. Briefly vortex the tube and then do a quick spin (less than 5000xg) to concentrate the liquid at the bottom.
  5. Store the suspended plasmid at -20°C. The DNA is stable for at least one year from date of shipping when stored at -20°C.

RefSeq: [NM\\_007269.4](#)

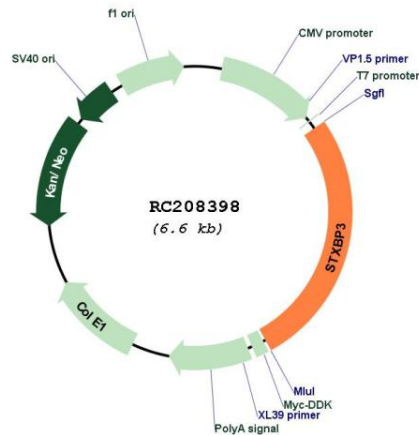
RefSeq Size: 2522 bp

RefSeq ORF: 1779 bp

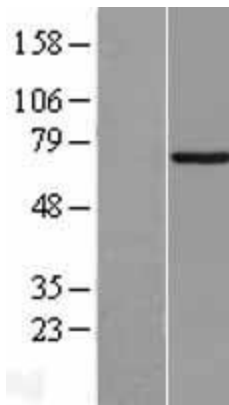
Locus ID: 6814

**UniProt ID:** O00186  
**Cytogenetics:** 1p13.3  
**Domains:** Sec1  
**Protein Families:** Stem cell - Pluripotency  
**MW:** 67.8 kDa  
**Gene Summary:** Together with STX4 and VAMP2, may play a role in insulin-dependent movement of GLUT4 and in docking/fusion of intracellular GLUT4-containing vesicles with the cell surface in adipocytes.[UniProtKB/Swiss-Prot Function]

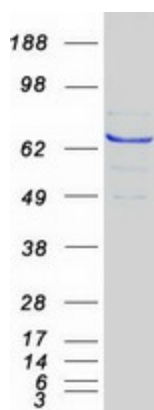
### Product images:



Circular map for RC208398



Western blot validation of overexpression lysate (Cat# [LY416088]) using anti-DDK antibody (Cat# [TA50011-100]). Left: Cell lysates from untransfected HEK293T cells; Right: Cell lysates from HEK293T cells transfected with RC208398 using transfection reagent MegaTran 2.0 (Cat# [TT210002]).



Coomassie blue staining of purified STXBP3 protein (Cat# [TP308398]). The protein was produced from HEK293T cells transfected with STXBP3 cDNA clone (Cat# RC208398) using MegaTran 2.0 (Cat# [TT210002]).