

## Product datasheet for **RC208394**

### FLVCR (FLVCR1) (NM\_014053) Human Tagged ORF Clone

#### Product data:

Product Type:	Expression Plasmids
Product Name:	FLVCR (FLVCR1) (NM_014053) Human Tagged ORF Clone
Tag:	Myc-DDK
Symbol:	FLVCR
Synonyms:	AXPC1; FLVCR; MFSD7B; PCA; PCARP; SLC49A1
Mammalian Cell Selection:	Neomycin
Vector:	pCMV6-Entry (PS100001)
E. coli Selection:	Kanamycin (25 ug/mL)



[View online »](#)

ORF Nucleotide  
Sequence:

>RC208394 ORF sequence  
Red=Cloning site Blue=ORF Green=Tags(s)

TTTTGTAATACGACTCACTATAGGGCGGCCGGGAATTCGTCGACTGGATCCGGTACCGAGGAGATCTGCC  
GCCGCGATCGCC

ATGGCGCGCCAGACGATGAGGAGGGGGCGCGGTGGCGCCCGGACACCCGCTCGCGAAAGGATACCTCC  
CGTTGCCGAGGGGCGCGCCCGTTGGGAAGGAGAGCGTGGAGCTGCAGAACGGGCCAAAGCGGGCACCTT  
CCCGGTGAATGGGCCCGGGACAGCCTCGCTGCCGCCTCGGGAGTTCTGGGCGGGCCTCAGACTCCA  
CTGGCCCCAGAAGAGGAGACCCAGGCCCGGCTGCTGCCTGCGGGCGGGAGCTGAGACCCCGGGGGCCG  
AGAGCAGCCCGCTGCCCTTACGGCGCTCTCCCGCGCGCTTCTGGTGTCTCTGATCTTCAGCCTGTA  
CTCGCTGGTCAACGCCTTTCAGTGGATCCAGTACAGCATCATTAGCAACGCTTTCGAGGGCTTCTACGGT  
GTCACCTGTGTCACATCGACTGGCTGTCCATGGTGTACATGCTGGCCTACGTGCCCTCATCTTCCCGG  
CCACCTGGCTGTGGACACCAGAGGCTCGGGCTCACCGCCTGTGGGCTCCGGCCTCACTGCCTGGG  
TGCTGGATCAAGTGCAGCAGTGTGCAGCAGCATCTTCTGGGTACCATGTTGGGCCAGTGTCTGTGC  
TCGGTGGCCAGGTGTTTCATCCTGGGCTTGCCCTCCCGCATCGCCTCAGTGTGGTTTGGGCCAAAGAGG  
TGTCACAGCTTGTGCCACCGCGCTGCTGGGCAATCAGCTTGAAGTGCAGTTGGCTTTTGTACCACC  
AGTTTTAGTACCAACACACAGAATGACACAAATCTCCTGGCTTGAATATCAGCACCATGTTTTATGGA  
ACATCAGCTGTTGCCACACTTTTATTTTAAACAGCAATTGCCTTCAAAGAAAAACCTCGGTATCCAC  
CAAGTCAGGCTCAAGCAGCTCTTCAAGCAGTCCCGCTGAAGAGTACTCCTATAAGAAATCAATAAGAAA  
CCTGTTAAAAACATTCTTTTGTCTTCTGTTGATCACTTATGGTATCATGACTGGTGCCTTTTATTCA  
GTCTCAACGTTATTAATCAAATGATATTGACATATTATGAGGGAGAAGAAGTCAATGCTGAAGGATTG  
GGCTAACGCTAGTAGTACTGGAATGGTGGGCTATTCTTTGTGGCTTATGGCTGGATATACTAAAAC  
ATACAAACAGACTACTCTGATAGTTTATATTTTGTCTTTTATTGGAATGGTTATCTTTACTTTCACATTG  
GACCTTAGATACATTATCATCGTGTGTTGTTACTGGAGGGTGTGGCTTCTTCATGACTGGTTACCTCC  
CTTTGGGTTTTGAATTTGCTGTTGAAATCACTTACCCTGAATCTGAAGTACTTCATCTGGTCTTCTTAA  
TGCTTCTGCACAGATATTTGGAATTTGTTTACATTGGCTCAAGGAAAGCTCACATCAGACTATGGTCTT  
AAGGCAGGGAACATTTTCTCTGTGTCTGGATGTTTATAGGCATCATATTAACAGCATTAAATCAAGTCTG  
ATCTGCGAAGACACAACATAAATATAGGAATTACAAATGTTGATGTTAAAGCTATACCAGCTGACAGTCC  
CACAGACCAAGAACAAAAATGGTTATGTTGTCCAAGCAGTCAGAATCAGCAAT

ACGCGTACGCGGCCGCTCGAGCAGAACTCATCTCAGAAGAGGATCTGGCAGCAAATGATATCCTGGATT  
ACAAGGATGACGACGATAAGGTTTAA

## Protein Sequence:

>RC208394 protein sequence  
Red=Cloning site Green=Tags(s)

MARPDDEEGAAVAPGHPLAKGYLPLPRGAPVKGESVELQNGPKAGTFPVNGPPRDSLAAAAGVGGPQTP  
LAPEEETQARLLPAGAGAETPGAESSPLPLTALSPRRFVLLIFSLYSLVNAFQWIQYSIISNVFEGFYG  
VTLHIDWLSMVYMLAYVPLIFPATWLLDTRGLRLTALLGSLNCLGAWIKCGSVQQHLFWVTMLGQCLC  
SVAQVFIILGLPSRIASVWFPGKEVSTACATAVLGNQLGTAVGFLLPVLPNTQNDTNLLACNISTMFY  
TSAVATLLFILTAFKEKPRYPSSQAQAALQDSPPEEYSYKKSIRNLFKNIPFVLLITYGIMTGAFYS  
VSTLLNQMILTYEVEEVNAGRIGLTLVAGMVGSIICGLWLDYTKYKQTTLIVYILSFIGMVIFFTL  
DLRYIIIVFTGGVLFVMTGYLPLGFEFAVEITYPESEGTSSGLLNASAQIFGILFTLAQGLTSDYGP  
KAGNIFLCVWMFIGIILTALIKSDLRRHNINIGITNVDVKAIPADSPTDQEPKMVMLSKQSESAI

TRTRPLEQKLISEEDLAANDILDYKDDDDKV

## Chromatograms:

[https://cdn.origene.com/chromatograms/mk6198\\_f10.zip](https://cdn.origene.com/chromatograms/mk6198_f10.zip)

## Restriction Sites:

Sgfl-MluI

**Cloning Scheme:**


**ACCN:** NM\_014053

**ORF Size:** 1665 bp

**OTI Disclaimer:** The molecular sequence of this clone aligns with the gene accession number as a point of reference only. However, individual transcript sequences of the same gene can differ through naturally occurring variations (e.g. polymorphisms), each with its own valid existence. This clone is substantially in agreement with the reference, but a complete review of all prevailing variants is recommended prior to use. [More info](#)

**OTI Annotation:** This clone was engineered to express the complete ORF with an expression tag. Expression varies depending on the nature of the gene.

**Components:** The ORF clone is ion-exchange column purified and shipped in a 2D barcoded Matrix tube containing 10ug of transfection-ready, dried plasmid DNA (reconstitute with 100 ul of water).

**Reconstitution Method:**

1. Centrifuge at 5,000xg for 5min.
2. Carefully open the tube and add 100ul of sterile water to dissolve the DNA.
3. Close the tube and incubate for 10 minutes at room temperature.
4. Briefly vortex the tube and then do a quick spin (less than 5000xg) to concentrate the liquid at the bottom.
5. Store the suspended plasmid at -20°C. The DNA is stable for at least one year from date of shipping when stored at -20°C.

**RefSeq:** [NM\\_014053.4](#)

**RefSeq Size:** 5947 bp

**RefSeq ORF:** 1668 bp

**Locus ID:** 28982

**UniProt ID:** [Q9Y5Y0](#)

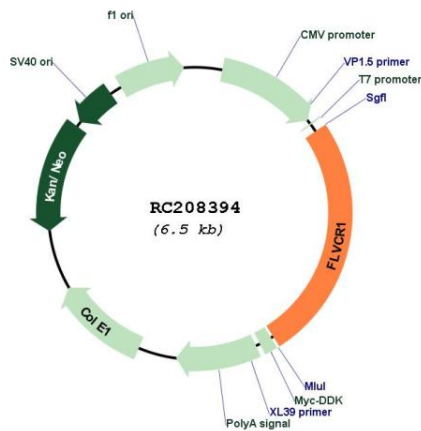
**Cytogenetics:** 1q32.3

**Protein Families:** Druggable Genome, Transmembrane

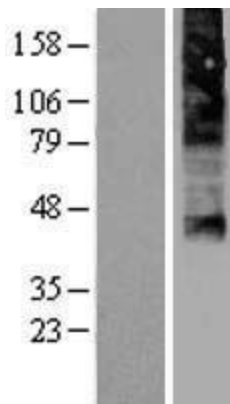
**MW:** 59.9 kDa

**Gene Summary:** This gene encodes a member of the major facilitator superfamily of transporter proteins. The encoded protein is a heme transporter that may play a critical role in erythropoiesis by protecting developing erythroid cells from heme toxicity. This gene may play a role in posterior column ataxia with retinitis pigmentosa and the hematological disorder Diamond-Blackfan syndrome. [provided by RefSeq, Jan 2011]

**Product images:**



Circular map for RC208394



Western blot validation of overexpression lysate (Cat# [LY402273]) using anti-DDK antibody (Cat# [TA50011-100]). Left: Cell lysates from untransfected HEK293T cells; Right: Cell lysates from HEK293T cells transfected with RC208394 using transfection reagent MegaTran 2.0 (Cat# [TT210002]).