

Product datasheet for RC208393

C1GALT1C1 (NM_152692) Human Tagged ORF Clone

Product data:

Product Type:	Expression Plasmids
Product Name:	C1GALT1C1 (NM_152692) Human Tagged ORF Clone
Tag:	Myc-DDK
Symbol:	C1GALT1C1
Synonyms:	C1GALT2; C38H2-L1; COSMC; HSPC067; MST143; TNPS
Mammalian Cell Selection:	Neomycin
Vector:	pCMV6-Entry (PS100001)
E. coli Selection:	Kanamycin (25 ug/mL)
ORF Nucleotide Sequence:	>RC208393 ORF sequence Red=Cloning site Blue=ORF Green=Tags(s)

TTTTGTAATACGACTCACTATAGGGCGCCGGGAATTCGTCGACTGGATCCGGTACCGAGGAGATCTGCC
GCC**CGATCGCC**

ATGCTTTCTGAAAGCAGCTCCTTTTTGAAGGGTGTGATGCTTGGAAAGCATTTTCTGTGCTTTGATCACTA
TGCTAGGACACATTAGGATTGGTCATGGAAATAGAATGCACCACCATGAGCATCATCACCTACAAGCTCC
TAACAAAGAAGATATCTGAAAATTTAGAGGATGAGCGCATGGAGCTCAGTAAGAGCTTTGAGTATAC
TGTATTATCCTTGAAAACCCAAAGATGTGAGTCTTTGGGCTGCAGTAAAGGAGACTTGGACCAAACT
GTGACAAAAGCAGAGTTCTTCAGTTCTGAAAATGTTAAAGTGTGAGTCAATTAATGGACACAAATGA
CATGTGGTTAATGATGAGAAAAGCTTACAAATACGCCTTTGATAAGTATAGAGACCAATACAAGTCTC
TTCTTGACAGCCCACTACGTTTGCTATCATTGAAAACCTAAAGTATTTTTGTTAAAAAGGATCCAT
CACAGCCTTTCTATCTAGGCCACACTATAAAATCTGGAGACCTTGAATATGTGGGTATGGAAGGAGGAAT
TGTCTTAAGTGTAGAATCAATGAAAAGACTTAACAGCCTTCTCAATATCCAGAAAAGTGTCTGAAACAG
GGAGGGATGATTTGGAAGATATCTGAAGATAAACAGCTAGCAGTTGCCTGAAATATGCTGGAGTATTTG
CAGAAAATGCAGAAGATGCTGATGGAAGATGATTTAATACCAATCTGTTGGGCTTTCTATTAAGA
GGCAATGACTTATCACCCCAACCAGGTAGTAGAAGGCTGTTGTTTCAGATATGGCTGTTACTTTTAATGGA
CTGACTCCAAATCAGATGCATGTGATGATGTTGGGTATACCGCCTTAGGGCATTGGGCATATTTTCA
ATGATGCATTGGTTTTCTTACCTCCAAATGGTTCTGACAATGAC

ACGCGTACGCGGCCGCTCGAGCAGAAACTCATCTCAGAAGAGGATCTGGCAGCAAATGATATCCTGGATT
ACAAGGATGACGACGATAAGGTTTAA



[View online »](#)

Protein Sequence: >RC208393 protein sequence
Red=Cloning site Green=Tags(s)

MLSESSSFLKGVMLGSIFCALITMLGHIRIGHGNRMHHHEHHHLQAPNKEDILKISEDERMELSKSFRVY
 CIILVKPKDVSLWAAVKETWTKHCDKAEFFSSENVKVFESINMDTNDMWLMMRKAYKYAFDKYRDQYNWF
 FLARPTTFAIENLKYFLLKKDPSQPFYLGHTIKSGDLEYVGMGGIVL SVESMKRLNLLNIPEKCEQ
 GGMIWKISEDKQLAVCLKYAGVFAENAEDADGKDVFNKSVGLSIKEAMTYHPNQVVEGCCSDMAVTFNG
 LTPNQMHVMMYGVYRLRAFGHIFNDALVFLPPNGSDND

TRTRPLEQKLISEEDLAANDILDYKDDDDKV

Chromatograms: https://cdn.origene.com/chromatograms/mk6350_f10.zip

Restriction Sites: SgfI-MluI

Cloning Scheme:



ACCN: NM_152692

ORF Size: 954 bp

OTI Disclaimer: The molecular sequence of this clone aligns with the gene accession number as a point of reference only. However, individual transcript sequences of the same gene can differ through naturally occurring variations (e.g. polymorphisms), each with its own valid existence. This clone is substantially in agreement with the reference, but a complete review of all prevailing variants is recommended prior to use. [More info](#)

OTI Annotation: This clone was engineered to express the complete ORF with an expression tag. Expression varies depending on the nature of the gene.

Components: The ORF clone is ion-exchange column purified and shipped in a 2D barcoded Matrix tube containing 10ug of transfection-ready, dried plasmid DNA (reconstitute with 100 ul of water).

Reconstitution Method:

1. Centrifuge at 5,000xg for 5min.
2. Carefully open the tube and add 100ul of sterile water to dissolve the DNA.
3. Close the tube and incubate for 10 minutes at room temperature.
4. Briefly vortex the tube and then do a quick spin (less than 5000xg) to concentrate the liquid at the bottom.
5. Store the suspended plasmid at -20°C. The DNA is stable for at least one year from date of shipping when stored at -20°C.

RefSeq: [NM_152692.4](#)

RefSeq Size: 1915 bp

RefSeq ORF: 957 bp

Locus ID: 29071

UniProt ID: [Q96EU7](#)

Cytogenetics: Xq24

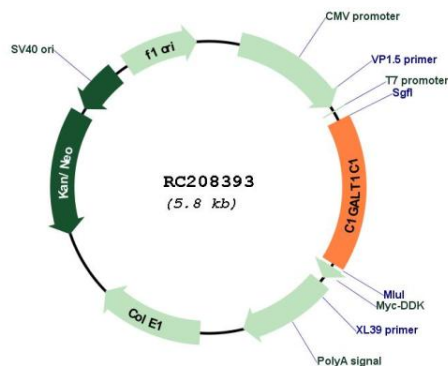
Protein Families: Transmembrane

Protein Pathways: Metabolic pathways, O-Glycan biosynthesis

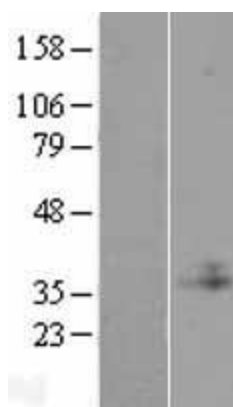
MW: 36.4 kDa

Gene Summary: This gene encodes a type II transmembrane protein that is similar to the core 1 beta1,3-galactosyltransferase 1, which catalyzes the synthesis of the core-1 structure, also known as Thomsen-Friedenreich antigen, on O-linked glycans. This gene product lacks the galactosyltransferase activity itself, but instead acts as a molecular chaperone required for the folding, stability and full activity of the core 1 beta1,3-galactosyltransferase 1. Mutations in this gene have been associated with Tn syndrome. Alternatively spliced transcript variants encoding the same protein have been identified. [provided by RefSeq, Dec 2009]

Product images:



Circular map for RC208393



Western blot validation of overexpression lysate (Cat# [LY423277]) using anti-DDK antibody (Cat# [TA50011-100]). Left: Cell lysates from untransfected HEK293T cells; Right: Cell lysates from HEK293T cells transfected with [RC222615] using transfection reagent MegaTran 2.0 (Cat# [TT210002]).