

Product datasheet for RC208392

YBX2 (NM_015982) Human Tagged ORF Clone

Product data:

Product Type:	Expression Plasmids
Product Name:	YBX2 (NM_015982) Human Tagged ORF Clone
Tag:	Myc-DDK
Symbol:	YBX2
Synonyms:	CONTRIN; CSDA3; DBPC; MSY2
Mammalian Cell Selection:	Neomycin
Vector:	pCMV6-Entry (PS100001)
E. coli Selection:	Kanamycin (25 ug/mL)
ORF Nucleotide Sequence:	>RC208392 representing NM_015982 Red=Cloning site Blue=ORF Green=Tags(s)

TTTTGTAATACGACTCACTATAGGGCGGCCGGAATTCGTCGACTGGATCCGGTACCGAGGAGATCTGCCGCCGCGATCGCC

ATGAGCGAGGTGGAGGCGGCAGCGGTGGCTACAGCGGTCCCCGCGGCAGCGGTGCCCGGACGGCGGCAGGGTGGTAGCGGTGGTACCGGTGCCCGCAGGGGAGCCGAGAAAGGCGGGGGCGGGCGGGGGCGGAGCCGCTCGGGCCCCGCTGCTGGGACCCCTCGGCGCGGGCTCCCGCACCCCTGGCAATCCGGCCACGGCGGTCTCGGAACCCCGCCCCCGGCCCGGAGTCAGGCGGACAAGCCGGTCTGGCAATCCAAGTCCTGGGCACTGTCAAATGGTTCAACGTCCGGAATGGTTACGGATTCATCAACAGGAATGACACCAAGGAGATGTCTTTGTTACCAGACAGCTATTAAGAAACAACCCAGGAAGTTCTGCGCAGCGTTGGAGATGGGAGACTGTGGAATTTGATGTCTGGAAGGAGAGAAGGGCGCAGAAGCCACTAATGTAAGTGGGCTGGGGAGTACCCGTGAAGGGCAGCCGTTATGCCCAACCGACGTAAGTCCCGCCGATTATCCCCCGGCCCCCTCAGTTGCCCAACCAATGGTGGCAGAGATCCCTCGGCGGGGACAGGACCTGGCAGTAAAGGGGAGCGGGCTGAAGACTCTGGCAACGGCCCCGACGATGGTGGCCCCACCCCTTCTTACCGACGGCGGTGTGTGCGAGGCCCGCCCTCCAACAGCAGCAGCCTATAGAGGGCACTGACAGGTAGAACCACAAAGAGACAGCCCATTTGAGGGGACCAACAGCAGGGAGATGAGCGAGTCCCCCGCCAGATTCGGGCCAGTACCGAAGGCCTTTCGCCCCAGGCCAGCCAGCAGCCTACCACAGAAGGTGGGGATGGTGAGACCAAGCCAGCCAAAGTCCCGCTGATGGTTCCCGCCTGAGCCCCAGCGCCACGAAACCGCCCTACTTCCAGCGAGACGGCAGCAGGCCCTGGCCCCAGAGGCCCTGGCCCCGGCAGCCCGCAGCCCTGAGACCTCAGCCCTGTCAACAGTGGGACCCCAACCACCACCATCCTGGAG

ACGCGTACGCGGCCGCTCGAGCAGAACTCATCTCAGAAGAGGATCTGGCAGCAATGATATCCTGGATTACAAGGATGACGACGATAAGGTTAA



[View online »](#)

Protein Sequence: >RC208392 representing NM_015982
Red=Cloning site Green=Tags(s)

MSEVEAAAVATAVPAATVPATAAGVVAVVVPV PAGEPQKGGGAGGGGGAASGPAAGTPSAPGSRTPGNPA
TAVSGTPAPPARSQADKPVLAIQVLGTVKWFNVRNGYGF INRNDTKEDVFVHQTAIKRNNPRKFLRSVGD
GETVEFDVVEGEKGAEATNVTGPGGVPVKGSRYAPNRRKSRRFIPRPPSVAPPPMVAEIPSAAGTPGSKG
ERAEDSGQRPRRWCPFFFYRRRFVGRPRPPNQQPIEGTDRVEPKETAPLEGHQQQGDERVPPRFPRP
YRRPFPRPRRQPTTEGGDGETKPSQGPADGSRPEPQRPRNRPYFQRRRQQAPGPQQAPGPRQPAAPETS
APVNSGDPTTTILE

TRTRPLEQKLISEEDLAANDILDYKDDDDKV

Chromatograms: https://cdn.origene.com/chromatograms/mg3548_b09.zip

Restriction Sites: SgfI-MluI

Cloning Scheme:



ACCN: NM_015982

ORF Size: 1092 bp

OTI Disclaimer: The molecular sequence of this clone aligns with the gene accession number as a point of reference only. However, individual transcript sequences of the same gene can differ through naturally occurring variations (e.g. polymorphisms), each with its own valid existence. This clone is substantially in agreement with the reference, but a complete review of all prevailing variants is recommended prior to use. [More info](#)

OTI Annotation: This clone was engineered to express the complete ORF with an expression tag. Expression varies depending on the nature of the gene.

Components: The ORF clone is ion-exchange column purified and shipped in a 2D barcoded Matrix tube containing 10ug of transfection-ready, dried plasmid DNA (reconstitute with 100 ul of water).

Reconstitution Method:

1. Centrifuge at 5,000xg for 5min.
2. Carefully open the tube and add 100ul of sterile water to dissolve the DNA.
3. Close the tube and incubate for 10 minutes at room temperature.
4. Briefly vortex the tube and then do a quick spin (less than 5000xg) to concentrate the liquid at the bottom.
5. Store the suspended plasmid at -20°C. The DNA is stable for at least one year from date of shipping when stored at -20°C.

Note: Plasmids are not sterile. For experiments where strict sterility is required, filtration with 0.22um filter is required.

RefSeq: [NM_015982.2](#)

RefSeq Size: 1587 bp

RefSeq ORF: 1095 bp

Locus ID: 51087

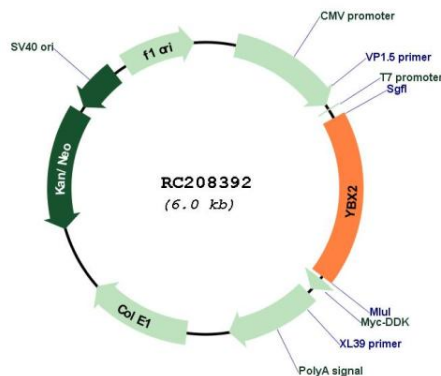
UniProt ID: [Q9Y2T7](#)

Cytogenetics: 17p13.1

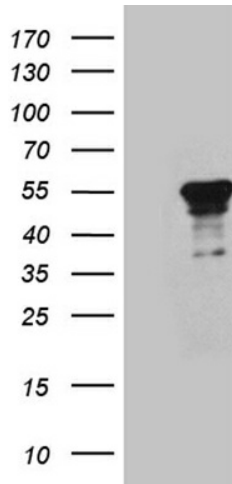
MW: 38.3 kDa

Gene Summary: This gene encodes a nucleic acid binding protein which is highly expressed in germ cells. The encoded protein binds to a Y-box element in the promoters of certain genes but also binds to mRNA transcribed from these genes. Pseudogenes for this gene are located on chromosome 10 and 15. [provided by RefSeq, Feb 2012]

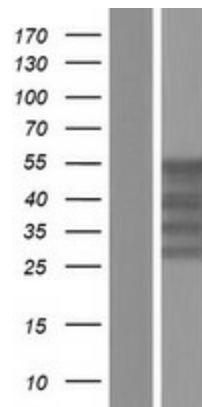
Product images:



Circular map for RC208392



HEK293T cells were transfected with the pCMV6-ENTRY control (Cat# [PS100001], Left lane) or pCMV6-ENTRY YBX2 (Cat# RC208392, Right lane) cDNA for 48 hrs and lysed. Equivalent amounts of cell lysates (5 ug per lane) were separated by SDS-PAGE and immunoblotted with anti-YBX2 (Cat# [TA811254])(1:2000). Positive lysates [LY414272] (100ug) and [LC414272] (20ug) can be purchased separately from OriGene.



Western blot validation of overexpression lysate (Cat# [LY414272]) using anti-DDK antibody (Cat# [TA50011-100]). Left: Cell lysates from untransfected HEK293T cells; Right: Cell lysates from HEK293T cells transfected with RC208392 using transfection reagent MegaTran 2.0 (Cat# [TT210002]).