

Product datasheet for RC208391

SFRP5 (NM_003015) Human Tagged ORF Clone

Product data:

Product Type: Expression Plasmids
 Product Name: SFRP5 (NM_003015) Human Tagged ORF Clone
 Tag: Myc-DDK
 Symbol: SFRP5
 Synonyms: SARP3
 Mammalian Cell Selection: Neomycin
 Vector: pCMV6-Entry (PS100001)
 E. coli Selection: Kanamycin (25 ug/mL)
 ORF Nucleotide Sequence: >RC208391 representing NM_003015
 Red=Cloning site Blue=ORF Green=Tags(s)

TTTTGTAATACGACTCACTATAGGGCGGCCGGAATTCGTCGACTGGATCCGGTACCGAGGAGATCTGCC
 GCC**CGATCGCC**

ATGCGGGCGGGCGGGCGGGGGGGCGTGCAGACGGCCGCGCTGGCGCTGCTGCTGGGGCGCTGCACT
 GGGCGCCGGCGCGCTGCGAGGAGTACGACTACTATGGCTGGCAGGCCGAGCCGCTGCACGGCCGCTCCTA
 CTCCAAGCCGGCAGTGCCTTGACATCCCTGCCGACCTGCCGCTCTGCCACACGGTGGGTACAAGCGC
 ATGCGGCTGCCAACCTGCTGGAGCACGAGAGCCTGGCCGAAGTGAAGCAGCAGGCGAGCAGCTGGCTGC
 CGCTGCTGGCCAAGCGCTGCCACTCGGATACGCAGGTCTTCTGTGCTCGCTCTTTGCGCCGCTGTCT
 CGACCGGCCATCTACCGTGCCGCTCGCTGTGCGAGGCCGTGCGCGCCGCTGCGCGCCGCTCATGGAG
 GCCTACGGCTTCCCTGGCTGAGATGCTGCACTGCCACAAGTCCCCCTGGACAACGACCTCTGCATCG
 CCGTGCAAGTTCGGGCACCTGCCCGCCACCGCGCCTCCAGTGACCAAGATCTGCGCCAGTGTGAGATGGA
 GCACAGTGTGACGGCCTCATGGAGCAGATGTGCTCCAGTGACTTTGTGGTCAAAATGCGCATCAAGGAG
 ATCAAGATAGAGAATGGGACCGGAAGCTGATTGGAGCCAGAAAAAGAAAGCTGCTCAAGCCGGGCC
 CCCTGAAGCGCAAGGACCAAGCGGCTGGTGTGCACATGAAGAATGGCGGGGCTGCCCTGCCACA
 GCTGGACAGCCTGGCGGGCAGCTTCTGGTTCATGGCCGCAAAGTGGATGGACAGCTGCTGCTCATGGCC
 GTCTACCGCTGGGACAAGAAGAATAAGGAGATGAAGTTTGCAGTCAAATTCATGTTCTCCTACCCCTGCT
 CCCTCTACTACCCTTTCTTCTACGGGGCGGCAGAGCCCCAC

ACGCGTACGCGGCCGCTCGAGCAGAACTCATCTCAGAAGAGGATCTGGCAGCAAATGATATCCTGGATT
 ACAAGGATGACGACGATAAGGTTTAA



[View online »](#)

Protein Sequence: >RC208391 representing NM_003015
 Red=Cloning site Green=Tags(s)

MRAAAAAGGVRTAALALLLGAHWAPARCEEYDYYGWQAEPLHGRSYSKPPQCLDIPADLPLCHTVGYKR
 MRLPNLLEHESLAEVKQQASSWLPLLAKRCHSDTQVFLCSLFAPVCLDRPIYPCRSLCEAVRAGCAPLME
 AYGFPWPEMLHCHKFPLDNDLCIAVQFGHLPATAPPVTKICAQCEMEHSADGLMEQMCSSDFVVKMRIKE
 IKIENGDRKLIQAQKKKLLKPGPLKPKDTKRLVLHMKNAGAGCCPQLDSLAGSFLVMGRKVDGQLLLMA
 VYRWDKKNKEMKFAVKFMFSYPCSLYYPFFYGAAEPH

TRTRPLEQKLISEEDLAANDILDYKDDDDKV

Chromatograms: https://cdn.origene.com/chromatograms/mg3231_d08.zip

Restriction Sites: SgfI-MluI

Cloning Scheme:

Cloning sites used for ORF Shuttling:



* The last codon before the Stop codon of the ORF

ACCN: NM_003015

ORF Size: 951 bp

OTI Disclaimer: The molecular sequence of this clone aligns with the gene accession number as a point of reference only. However, individual transcript sequences of the same gene can differ through naturally occurring variations (e.g. polymorphisms), each with its own valid existence. This clone is substantially in agreement with the reference, but a complete review of all prevailing variants is recommended prior to use. [More info](#)

OTI Annotation: This clone was engineered to express the complete ORF with an expression tag. Expression varies depending on the nature of the gene.

Components: The ORF clone is ion-exchange column purified and shipped in a 2D barcoded Matrix tube containing 10ug of transfection-ready, dried plasmid DNA (reconstitute with 100 ul of water).

Reconstitution Method:

1. Centrifuge at 5,000xg for 5min.
2. Carefully open the tube and add 100ul of sterile water to dissolve the DNA.
3. Close the tube and incubate for 10 minutes at room temperature.
4. Briefly vortex the tube and then do a quick spin (less than 5000xg) to concentrate the liquid at the bottom.
5. Store the suspended plasmid at -20°C. The DNA is stable for at least one year from date of shipping when stored at -20°C.

Note: Plasmids are not sterile. For experiments where strict sterility is required, filtration with 0.22um filter is required.

RefSeq: [NM_003015.2](#), [NP_003006.1](#)

RefSeq Size: 1905 bp

RefSeq ORF: 954 bp

Locus ID: 6425

UniProt ID: [Q5T4F7](#)

Cytogenetics: 10q24.2

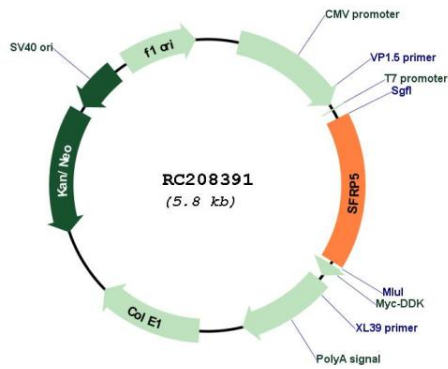
Protein Families: Adult stem cells, Druggable Genome, ES Cell Differentiation/IPS, Secreted Protein

Protein Pathways: Wnt signaling pathway

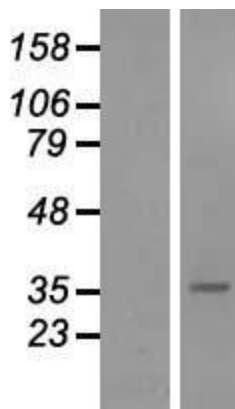
MW: 35.4 kDa

Gene Summary: Secreted frizzled-related protein 5 (SFRP5) is a member of the SFRP family that contains a cysteine-rich domain homologous to the putative Wnt-binding site of Frizzled proteins. SFRPs act as soluble modulators of Wnt signaling. SFRP5 and SFRP1 may be involved in determining the polarity of photoreceptor cells in the retina. SFRP5 is highly expressed in the retinal pigment epithelium, and moderately expressed in the pancreas. [provided by RefSeq, Jul 2008]

Product images:



Circular map for RC208391



Western blot validation of overexpression lysate (Cat# [LY418953]) using anti-DDK antibody (Cat# [TA50011-100]). Left: Cell lysates from untransfected HEK293T cells; Right: Cell lysates from HEK293T cells transfected with RC208391 using transfection reagent MegaTran 2.0 (Cat# [TT210002]).