

Product datasheet for **RC208389**

TROY (TNFRSF19) (NM_148957) Human Tagged ORF Clone

Product data:

Product Type:	Expression Plasmids
Product Name:	TROY (TNFRSF19) (NM_148957) Human Tagged ORF Clone
Tag:	Myc-DDK
Symbol:	TROY
Synonyms:	TAJ; TAJ-alpha; TRADE; TROY
Mammalian Cell Selection:	Neomycin
Vector:	pCMV6-Entry (PS100001)
E. coli Selection:	Kanamycin (25 ug/mL)
ORF Nucleotide Sequence:	>RC208389 ORF sequence Red=Cloning site Blue=ORF Green=Tags(s)

TTTTGTAATACGACTCACTATAGGGCGCCGGGAATTCGTCGACTGGATCCGGTACCGAGGAGATCTGCC
GCC**CGATCGCC**

ATGGCTTTAAAGTGCTACTAGAACAGAGAAAACGTTTTCTACTCTTTAGTATTACTAGGCTATTTGT
CATGTAAGTGACTTGTGAATCAGGAGACTGTAGACAGCAAGAATTCAGGGATCGGTCTGGAACCTGTGT
TCCCTGCAACCAGTGTGGCCAGGCATGGAGTTGTCTAAGGAATGTGGCTTCGGCTATGGGGAGGATGCA
CAGTGTGTGACGTGCCGGCTGCACAGGTTCAAGGAGGACTGGGGCTTCAGAAATGCAAGCCTGTCTGG
ACTGCGCAGTGGTGAACCGCTTTCAGAAGGCAAATTTGTTCAAGCACCAGTGTGATGCCATCTGCGGGGACTG
CTTGCCAGGATTTATAGGAAGACGAAACTTGTGCGCTTTCAGACATGGAGTGTGTGCCTGTGGAGAC
CCTCCTCCTCCTTACGAACCGCACTGTGCCAGCAAGGTCAACCTCGTGAAGATCGCGTCCACGGCCTCCA
GCCCACGGGACACGGCGCTGGCTGCCGTTATCTGCAGCGCTCTGGCCACCGTCTGCTGGCCCTGTCTCAT
CCTCTGTGTATCTATTGTAAGAGACAGTTTATGGAGAAGAAACCCAGCTGGTCTCTGCGGTACACAGGAC
ATTCAGTACAACGGCTCTGAGCTGTGCTGTTTTGACAGACCTCAGCTCCACGAATATGCCACAGAGCCT
GCTGCCAGTGCCCGCTGACTCAGTGCAGACCTGCGGGCCGGTGCCTTGGCTCCCATCCATGTGCTGTGA
GGAGGCCCTGCAGCCCCAACCCGGCGACTTTGGTTGTGGGGTGCATTCTGCAGCCAGTCTTCAGGCAAGA
AACCGAGGCCAGCCGGGAGATGGTGCCGACTTCTTCGGATCCCTCACGCAGTCCATCTGTGGCGAGT
TTTCAGATGCCTGGCCTCTGATGCAGAATCCCATGGGTGGTGACAACATCTTTTTGTGACTCTTATCC
TGAACACTGGAGAAGACATTCATTCTCTCAATCCAGAACTTGAAGCTCAACGCTTTGGATTCAAAT
AGCAGTCAAGATTTGGTTGGTGGGCTGTTCCAGTCCAGTCTCATTCTGAAAACCTTACAGCAGCTACTG
ATTTATCTAGATATAACAACACACTGGTAGAATCAGCATCAACTCAGGATGCACTAACTATGAGAAGCCA
GCTAGATCAGGAGAGTGGTGTCTCATCCACCCAGCCACTCAGACGTCCCTCCAGGAAGCT

ACGCGTACGCGGCCGCTCGAGCAGAAACTCATCTCAGAAGAGGATCTGGCAGCAAATGATATCCTGGATT
ACAAGGATGACGACGATAAGGTTTAA



[View online >](#)

Protein Sequence: >RC208389 protein sequence
Red=Cloning site Green=Tags(s)

MALKVLLLEQKTFFTLLVLLGYLSCKVTCESGDCRQQEFRDRSGNCVPCNQCGPMELSKCEGFGYGEDA
 QCVTCRLHRFKEDWGFQKCKPCLDCAVVNRFQKANC SATSDAICGDCLPGFYRKTKLVGFQDMECVPCGD
 PPPPYEPHCASKVNLVKIASTASSPRDTALAAVICSALATVLLALLILCVIYCKRQFMEKKPSWSLSRSD
 IQYNGSELSCFDRPQLHEYAHRACCQCRSDSVQTCGPVRLLLPSMCCEEACSPNPATLGCQVHSAASLQAR
 NAGPAGEMVPTFFGSLTQSI CGEFSDAWPLMQNPMGGDNISFCDSYPELTGEDIHSLNPELESSTLDSN
 SSQDLVGGAVPVQSHSENFTAATDL SRYNNTLVESASTQDAL TMRSQLDQESGAVIHPATQTSLQEA

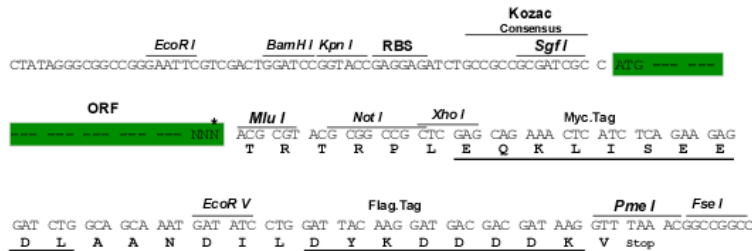
TRTRPLEQKLISEEDLAANDILDYKDDDDKLV

Chromatograms: https://cdn.origene.com/chromatograms/mk6851_g04.zip

Restriction Sites: SgfI-MluI

Cloning Scheme:

Cloning sites used for ORF Shuttling:



* The last codon before the Stop codon of the ORF

ACCN: NM_148957

ORF Size: 1251 bp

OTI Disclaimer: The molecular sequence of this clone aligns with the gene accession number as a point of reference only. However, individual transcript sequences of the same gene can differ through naturally occurring variations (e.g. polymorphisms), each with its own valid existence. This clone is substantially in agreement with the reference, but a complete review of all prevailing variants is recommended prior to use. [More info](#)

OTI Annotation: This clone was engineered to express the complete ORF with an expression tag. Expression varies depending on the nature of the gene.

Components: The ORF clone is ion-exchange column purified and shipped in a 2D barcoded Matrix tube containing 10ug of transfection-ready, dried plasmid DNA (reconstitute with 100 ul of water).

Reconstitution Method:

1. Centrifuge at 5,000xg for 5min.
2. Carefully open the tube and add 100ul of sterile water to dissolve the DNA.
3. Close the tube and incubate for 10 minutes at room temperature.
4. Briefly vortex the tube and then do a quick spin (less than 5000xg) to concentrate the liquid at the bottom.
5. Store the suspended plasmid at -20°C. The DNA is stable for at least one year from date of shipping when stored at -20°C.

RefSeq: [NM_148957.4](#)

RefSeq Size: 4523 bp

RefSeq ORF: 1254 bp

Locus ID: 55504

UniProt ID: [Q9NS68](#)

Cytogenetics: 13q12.12

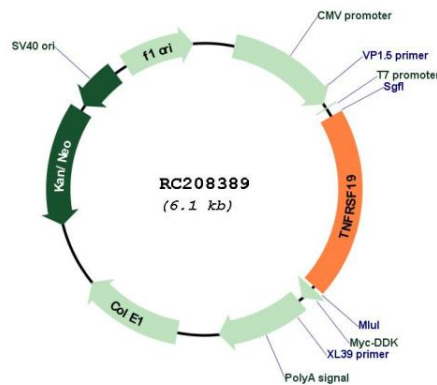
Protein Families: Druggable Genome, Transmembrane

Protein Pathways: Cytokine-cytokine receptor interaction

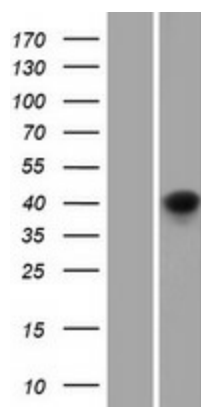
MW: 45.3 kDa

Gene Summary: The protein encoded by this gene is a member of the TNF-receptor superfamily. This receptor is highly expressed during embryonic development. It has been shown to interact with TRAF family members, and to activate JNK signaling pathway when overexpressed in cells. This receptor is capable of inducing apoptosis by a caspase-independent mechanism, and it is thought to play an essential role in embryonic development. Alternatively spliced transcript variants encoding distinct isoforms have been described. [provided by RefSeq, Jul 2008]

Product images:



Circular map for RC208389



Western blot validation of overexpression lysate (Cat# [LY407721]) using anti-DDK antibody (Cat# [TA50011-100]). Left: Cell lysates from untransfected HEK293T cells; Right: Cell lysates from HEK293T cells transfected with RC208389 using transfection reagent MegaTran 2.0 (Cat# [TT210002]).