

Product datasheet for **RC208386**

MEIS2 (NM_170676) Human Tagged ORF Clone

Product data:

Product Type:	Expression Plasmids
Product Name:	MEIS2 (NM_170676) Human Tagged ORF Clone
Tag:	Myc-DDK
Symbol:	MEIS2
Synonyms:	CPCMR; HsT18361; MRG1
Mammalian Cell Selection:	Neomycin
Vector:	pCMV6-Entry (PS100001)
E. coli Selection:	Kanamycin (25 ug/mL)



[View online »](#)

ORF Nucleotide Sequence:

>RC208386 ORF sequence
 Red=Cloning site Blue=ORF Green=Tags(s)

TTTTGTAATACGACTCACTATAGGGCGGCCGGGAATTCGTCGACTGGATCCGGTACCGAGGAGATCTGCC
 GCC**CGATCGCC**

ATGGCGCAAAGGTACGATGAGCTGCCCCATTACGGCGGGATGGACGGAGTAGGGTTCCCGCTTCCATGT
 ACGGAGACCCCTACGCGCGCGCGCCGATCCCCCGGTTACCACCTGAACCACGGGCCGCCGCTCCACGC
 CACACAGCACTACGGCGCGCACGCCCGCACCCCAATGTCATGCCGCGCCAGTATGGGATCCGCTGTCAAC
 GACGCCTTGAAGCGGGACAAGGACGCGATCTATGGGCACCCGTTGTTTCTCTGTAGCTCTGGTCTTTG
 AGAAGTGCAGCTGGCGACCTGCACTCCCCGGAACTGGAGTGGCTGGCGGAGACGTCTGCTCTCCGA
 CTCCTTCAACGAGGACATCGCGTCTTCGCAAGCAGGTCGCGCGGAAAAGCCACTTTTTCTCAAAT
 CCAGAGCTGGACAATTTGATGATACAAGCAATACAAGTACTAAGGTTTCATCTTTGGAGTTAGAAAAGG
 TCCACGAACTGTGCGATAACTTCTGCCACCGATACATTAGCTGTTGAAGGGGAAAATGCCCATCGACCT
 CGTCATTGATGAAAGAGACGGCAGCTCCAAGTCAGATCATGAAGAACTTTCAGGCTCCTCCACAAATCTC
 GCTGACCATAACCTTCTTCTTGGCGAGACCACGATGATGCAACCTCAACCCACTCAGCAGGCACCCAG
 GGCCCTCCAGTGGGGGCCATGCTTCCCAGAGCGGAGACAACAGCAGTGAGCAAGGGGATGGTTTAGACAA
 CAGTGTAGCTTACCTGGTACAGGTGACGATGATGATCCGGATAAAGGACAAAAACGCCAGAAGAAAAGA
 GGCATTTTCCCAAAGTAGCAACAAATATCATGAGAGCATGGCTCTTCCAGCATCTCACACATCCGTACC
 CTTCCGAAGAGCAGAAGAAACAGTTAGCGCAAGACACAGGACTTACAATTCTCCAAGTAAACAATGGTT
 TATTAATGCCAGAAGAAGATAGTACAGCCATGATTGACCAGTCAAATCGAGCAGTGAGCAAGGAGCA
 GCATATAGTCCAGAGGGTCAGCCATGGGGAGCTTTGTGTTGGATGGTACGCAACACATGGGGATCCGGC
 CTCGAGGTTTGCAGAGCATGCCAGGGGACTACGTTTCTCAGGGTGGTCTATGGGAATGAGTATGGCACA
 GCCAAGTTACACTCCTCCCAGATGACCCACACCCCTACTCAATTAAGACATGGACCCCAATGCATTCA
 TATTTGCCAAGCCATCCCACCACCCAGCCATGATGATGACGAGGACCCCTACCCACCTGGAAATGA
 CTATGTACAGCACAGGCCCCACAATGTTAAATTCTGTAGATCCCAATGTTGGCGGACAGGTTATGGACAT
 TCATGCCCAA

ACGCGTACGCGGCCGCTCGAGCAGAAACTCATCTCAGAAGAGGATCTGGCAGCAATGATATCCTGGATT
 ACAAGGATGACGACGATAAGGTTTAA

Protein Sequence:

>RC208386 protein sequence
 Red=Cloning site Green=Tags(s)

MAQRYDELPHYGGMDGVGVPASMYGDPHAPRPIPPVHHLNHGPPLHATQHYGAHAPHNPVMPASMSGSAVN
 DALKRDKDAIYGHPLFPLLLALVFEKCELATCTPREPGVAGGDVCSDFSFNEDIAVFAKQVRAEKPLFSSN
 PELDNLMIQAIQVLRFHLLLELEKVELCDNFCHRYISCLKGKMPIDLVIDERDGSKSDHEELSGSSTNL
 ADHNPSSWRDHDATSTHSAGTPGPSSGGHASQSGDNSSEQDGLDNSVASPGTGDDDDPKDKRQKRR
 GIFPKVATNIMRAWLFQHLTHPYPSEEQKKQLAQDTGLTILQVNNWFINARRRIVQPMIDQSNRAVSQGA
 AYSPEGQPMGSFVLDGQQHMGIRPAGLQSMPGDYVSQGGPMGMSMAQPSYTPPQMPHPTQLRHGPPMHS
 YLPSHPHPMAMMHGGPPTHPGMTMSAQSPTMLNSVDPNVGGQVMDIHAQ

TRTRPLEQKLISEEDLAANDILDYKDDDDKV

Chromatograms:

https://cdn.origene.com/chromatograms/mk6350_e12.zip

Restriction Sites:

Sgfl-Mlul

Cloning Scheme:

Cloning sites used for ORF Shutting:



* The last codon before the Stop codon of the ORF

ACCN: NM_170676

ORF Size: 1410 bp

OTI Disclaimer: The molecular sequence of this clone aligns with the gene accession number as a point of reference only. However, individual transcript sequences of the same gene can differ through naturally occurring variations (e.g. polymorphisms), each with its own valid existence. This clone is substantially in agreement with the reference, but a complete review of all prevailing variants is recommended prior to use. [More info](#)
OTI Annotation: This clone was engineered to express the complete ORF with an expression tag. Expression varies depending on the nature of the gene.

Components: The ORF clone is ion-exchange column purified and shipped in a 2D barcoded Matrix tube containing 10ug of transfection-ready, dried plasmid DNA (reconstitute with 100 ul of water).

Reconstitution Method:

1. Centrifuge at 5,000xg for 5min.
2. Carefully open the tube and add 100ul of sterile water to dissolve the DNA.
3. Close the tube and incubate for 10 minutes at room temperature.
4. Briefly vortex the tube and then do a quick spin (less than 5000xg) to concentrate the liquid at the bottom.
5. Store the suspended plasmid at -20°C. The DNA is stable for at least one year from date of shipping when stored at -20°C.

RefSeq: [NM_170676.5](#)
RefSeq Size: 3256 bp

RefSeq ORF: 1413 bp

Locus ID: 4212

UniProt ID: [O14770](#)
Cytogenetics: 15q14

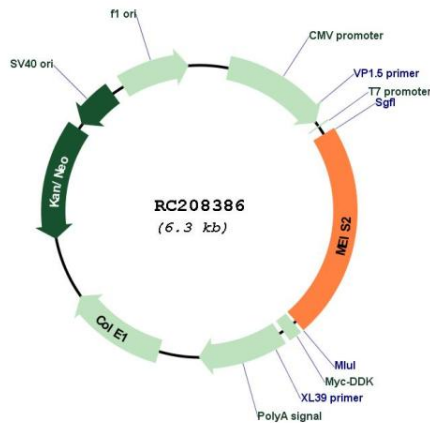
Domains: homeobox

Protein Families: Transcription Factors

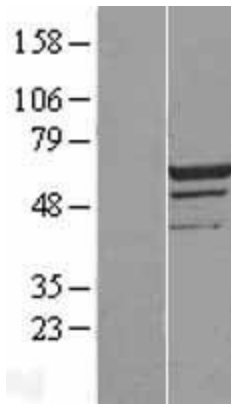
MW: 51.1 kDa

Gene Summary: This gene encodes a homeobox protein belonging to the TALE ('three amino acid loop extension') family of homeodomain-containing proteins. TALE homeobox proteins are highly conserved transcription regulators, and several members have been shown to be essential contributors to developmental programs. Multiple transcript variants encoding distinct isoforms have been described for this gene. [provided by RefSeq, Jul 2008]

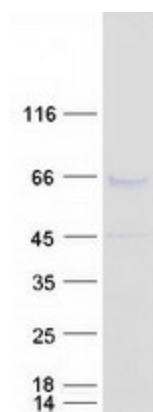
Product images:



Circular map for RC208386



Western blot validation of overexpression lysate (Cat# [LY406904]) using anti-DDK antibody (Cat# [TA50011-100]). Left: Cell lysates from untransfected HEK293T cells; Right: Cell lysates from HEK293T cells transfected with RC208386 using transfection reagent MegaTran 2.0 (Cat# [TT210002]).



Coomassie blue staining of purified MEIS2 protein (Cat# [TP308386]). The protein was produced from HEK293T cells transfected with MEIS2 cDNA clone (Cat# RC208386) using MegaTran 2.0 (Cat# [TT210002]).