

Product datasheet for RC208385

CHPT1 (NM_020244) Human Tagged ORF Clone

Product data:

Product Type:	Expression Plasmids
Product Name:	CHPT1 (NM_020244) Human Tagged ORF Clone
Tag:	Myc-DDK
Symbol:	CHPT1
Synonyms:	CPT; CPT1
Mammalian Cell Selection:	Neomycin
Vector:	pCMV6-Entry (PS100001)
E. coli Selection:	Kanamycin (25 ug/mL)
ORF Nucleotide Sequence:	>RC208385 representing NM_020244 Red=Cloning site Blue=ORF Green=Tags(s)

TTTTGTAATACGACTCACTATAGGGCGGCCGGAATTCGTCGACTGGATCCGGTACCGAGGAGATCTGCC
GCC**CGATCGCC**

ATGGCGGCAGGCGCCGGGGCCGGGTCGCGCCGCGCTGGCTGAGGGCGCTGAGCGAGCCGCTGAGCGCGG
CGCAGCTGCGGCGACTGGAGGAGCACCGCTACAGCGCGGGCGGCTCTCGCTGCTCGAGCCGCCGCTGCA
GCTCTACTGGACCTGGCTGCTCCAGTGGATCCCCTCTGGATGGCCCCAACTCCATCACCTGCTGGG
CTCGCCGTCAACGTGGTACCACGCTCGTGCTCATCTCCTACTGTCCCACGGCCACCGAAGAGGCACCAT
ACTGGACATACCTTTTATGTGCACTGGGACTTTTTATTTACCAGTCACTGGATGCTATTGATGGGAAACA
AGCCAGAAGAACAACTCTTGTCCCTTTAGGGGAGCTCTTTGACCATGGCTGTGACTCTTTCCACA
GTATTTATGGCAGTGGGAGCTTCAATTGCCGCTCGCTTAGGAACTTATCCTGACTGGTTTTTTTTCTGCT
CTTTTATGGGATGTTTGTGTTTTATTGCGCTCATTGGCAGACTTATGTTTCAGGCATGTTGAGATTTGG
AAAAGTGGATGTAACGAAATTCAGATAGCTTTAGTGATTGTCTTTGTGTGCTGCATTTGGAGGAGCA
ACAATGTGGGACTATACGATTCTATTCTAGAAATAAAATTGAAGATCCTTCCAGTTCTTGGATTCTAG
GTGGAGTAATATTTCTGTTCAAATATTTCCATGTTATCCTCCATGGTGGTGTGGCAAGAATGGATC
CACTATAGCAGGCACCACTGTCTTGTCACTGGACTCCACATAGGACTAATTATTATACTGGCAATAATG
ATCTATAAAAAGTCAGCAACTGATGTGTTGAAAAGCATCCTTTGCTTTTATATCCTAATGTTTGGATGTG
TCTTTGCTAAAGTCTCACAAAAATTAGTGGTAGCTCACATGACCAAAAGTGAACATATCTTCAAGACAC
TGCTTTTTGGGGCCAGGTCTTTTGTGTTTTAGACCAGTACTTTAATAACTTTATAGACGAATATGTTGTT
CTATGGATGGCAATGGTATTCTTCAATTTGATATGGTATATACTTTAGTGCTTTGTGCTGCAAATTT
CAAGACACCTTCACTAAATATATTCAAGACTGCATGTCATCAAGCACCTGAACAGGTTCAAGTTCTTTT
TTCAAAGAGTCATCAGAATAACATGGAT

ACGCGTACGCGGCCGCTCGAGCAGAACTCATCTCAGAAGAGGATCTGGCAGCAAATGATATCCTGGATT
ACAAGGATGACGACGATAAGGTTTAA



[View online >](#)

Protein Sequence: >RC208385 representing NM_020244
Red=Cloning site Green=Tags(s)

MAAGAGAGSAPRWLRALSEPLSAAQLRRLLEEHRYSAAAGVSLLEPPLQLYWTWLLQWIPLWMAPNSITLLG
 LAVNVVTTLVLSYCPTATEEAPYWTYLLCALGLFIYQSLDAIDGKQARRTNSCSPLGELFDHGCDLST
 VFMAVGASIAARLGTYPDWFFFCSEFIGMFVYCAHWQTYVSGMLRFKQVDVTEIQIALVIVFLSAFGGA
 TMWDYTIPILEIKLKILPVLGFLGGVIFSCSNYFHVILHGGVGVKNGSTIAGTSVLSPLHIGLIIILA
 IYKKSATDVFEKHPCLYILMFGCVFAKVSQKLVVAHMTKSELYLQDTVFLGPGLFLDQYFNNFIDEYVV
 LWMAMVSISSFDMVIYFSALCLQISRHLHLNIFKTACHQAPEQVQVLSKSHQNNMD

TRTRPLEQKLISEEDLAANDILDYKDDDDKV

Chromatograms: https://cdn.origene.com/chromatograms/mg3231_f05.zip

Restriction Sites: SgfI-MluI

Cloning Scheme:



ACCN: NM_020244

ORF Size: 1218 bp

OTI Disclaimer: The molecular sequence of this clone aligns with the gene accession number as a point of reference only. However, individual transcript sequences of the same gene can differ through naturally occurring variations (e.g. polymorphisms), each with its own valid existence. This clone is substantially in agreement with the reference, but a complete review of all prevailing variants is recommended prior to use. [More info](#)

OTI Annotation: This clone was engineered to express the complete ORF with an expression tag. Expression varies depending on the nature of the gene.

Components: The ORF clone is ion-exchange column purified and shipped in a 2D barcoded Matrix tube containing 10ug of transfection-ready, dried plasmid DNA (reconstitute with 100 ul of water).

Reconstitution Method:

1. Centrifuge at 5,000xg for 5min.
2. Carefully open the tube and add 100ul of sterile water to dissolve the DNA.
3. Close the tube and incubate for 10 minutes at room temperature.
4. Briefly vortex the tube and then do a quick spin (less than 5000xg) to concentrate the liquid at the bottom.
5. Store the suspended plasmid at -20°C. The DNA is stable for at least one year from date of shipping when stored at -20°C.

RefSeq: [NM_020244.3](#)

RefSeq Size: 1567 bp

RefSeq ORF: 1221 bp

Locus ID: 56994

UniProt ID: [Q8WUD6](#)

Cytogenetics: 12q23.2

Domains: CDP-OH_P_transf

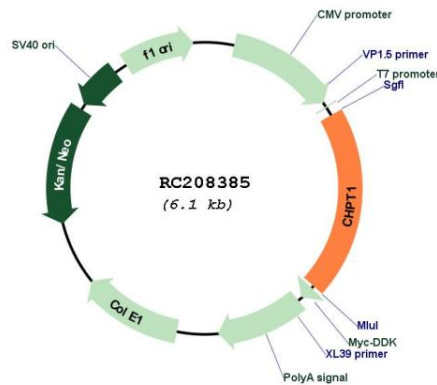
Protein Families: Transmembrane

Protein Pathways: Ether lipid metabolism, Glycerophospholipid metabolism, Metabolic pathways

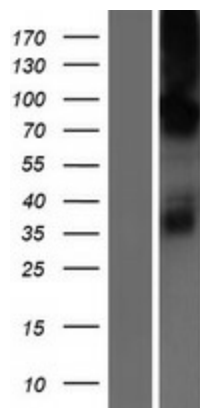
MW: 44.9 kDa

Gene Summary: Catalyzes phosphatidylcholine biosynthesis from CDP-choline. It thereby plays a central role in the formation and maintenance of vesicular membranes.[UniProtKB/Swiss-Prot Function]

Product images:



Circular map for RC208385



Western blot validation of overexpression lysate (Cat# [LY412578]) using anti-DDK antibody (Cat# [TA50011-100]). Left: Cell lysates from untransfected HEK293T cells; Right: Cell lysates from HEK293T cells transfected with RC208385 using transfection reagent MegaTran 2.0 (Cat# [TT210002]).