

Product datasheet for **RC208383**

ZBED5 (NM_021211) Human Tagged ORF Clone

Product data:

Product Type:	Expression Plasmids
Product Name:	ZBED5 (NM_021211) Human Tagged ORF Clone
Tag:	Myc-DDK
Symbol:	ZBED5
Synonyms:	Buster1
Mammalian Cell Selection:	Neomycin
Vector:	pCMV6-Entry (PS100001)
E. coli Selection:	Kanamycin (25 ug/mL)



[View online »](#)

ORF Nucleotide Sequence:

>RC208383 ORF sequence
 Red=Cloning site Blue=ORF Green=Tags(s)

TTTTGTAATACGACTCACTATAGGGCGGCCGGAATTCGTCGACTGGATCCGGTACCGAGGAGATCTGCC
 GCC**CGGATCGCC**

ATGATTGCTCCTCTTCTTTGTATCTGTCTTATAATTTCAACACATTTGCGATACTCAATGTCTATTCTA
 AATTAACCATGTTTTGTACCACAACTCATTGCCATGGATCTGTTGCTGAAACAAGGAAGCTTAAACA
 AGAAGTGAATCTTTCTGTTATCAGATTGTGTCTGAATCAAATGATCAGAAGGTTGAATATTACAAAGT
 GAAGATAAGCAGTTGCAACCTTCAGTTTCTAAAAAATCAGAAGGTGAGCTTTCCAGGGTCAAATTTATAT
 CCAATTTCAACAAAAAACATTTAGTAAAAACCAAAAAGAAGAAAATATGATGAAAGTTATTTGTCTTT
 TGGATTTACTTACTTCGGAAATAGAGATGCACCTCATGCTCAGTGTGATTATGTAAGAAAATTTTATCA
 AATAGCTCTTTAGCCCTAGTAAGCTTCGAAGACATTTGGAACTAAACATGCTGCATATAAAGACAAG
 ACATAAGCTTTTTCAAGCAACATCTCGATTACCTGAAAATAATAAACCCCAACACCTAAAATTTGAA
 TACAGATAATGAAAGTGCTACAGAAGCATCATACAATGTAAGTTACCATATAGCGCTGAGTGGAGAGGCT
 CATACTATTGGAGAATTGCTTATCAAACCTTGTGCAAAAGATGTAGTGATGCGGATGTTTATGAACAAT
 ATAGTAAAAAATAGATGCAGTACAGCTATCAAACAGTACTGTTGCACGTGCAATTAAGGATCTAGCTGC
 TGACATTGAAGAAGAGCTTGTGTTGACTGAAAATTTGCGATGGGTTTTCACTGCAACTAGATGAATCA
 GCTGATGTTTCAGGACTTGCTGTGCTGCTGTGTTGTTGTTGTTGTTGTTGTTGTTGTTGTTGTTGTTG
 ACCTACTCCTGTGTGAATCTTTGCAAAGTAATGCTACCGGTGAAGAAAATTTCAACTGTATCAACAGTTT
 TATGCAGAAACATGAAATGAAATGGGAAAAATGTGTTGATGTTGTTGTTGTTGTTGTTGTTGTTGTTGTTG
 GGGAAAATTTGCCAAGCTGTACCTTAATAAAAATATGTGGCTCCCGAAAGCACCAGTAGTCACTGCCTAT
 TATACAGACATGCAGTGGCAGTTAAAATAATGCCTACATCTCTAAAAAATGTGCTAGACCAGGCAGTACA
 AATCATCAATTATATTAAGCTCGACCACATCAATCCAGACTATTAATAAATTTTATGTGAGGAAATGGGT
 GCTCAGCACACAGCACTTCTTCTAAATACAGAGGTGAGGTGGCTTCTCGAGGTAAGTTCTTGTAAAGAC
 TTTTTGAACCTTCGTCGTAACCTTTGGTTTTCATGGATTCTGCTTTTCGACTATCTGATTGTTTAAACAA
 TTCATCTTGGCTGCTAAGACTTGCATATCTTGCAGATATTTTTACTAAATTAATGAAGTTAATTTGTCA
 ATGCAAGGAAAAATG

ACGCGTACGCGGCCGCTCGAGCAGAACTCATCTCAGAAGAGGATCTGGCAGCAAATGATATCCTGGATT
 ACAAGGATGACGACGATAAGGTTTAA

Protein Sequence:

>RC208383 protein sequence
 Red=Cloning site Green=Tags(s)

MIAPLLCILSYNFNTFAILNVYSKLTMFCTTNSLPMDLLLKQGSCLKQEVESFCYQIVSESNQKVGILQS
 EDKQLQPSVSKKSEGELSRVKFISNSNKITFSKPKRRKYDESYLSFGFTYFGNRDAPHAQCVLCKKILS
 NSSLAPSKLRRHLETKHAAYKDKDISFFKQHLDSPENNKPTPKIVNTDNESATEASYNVSYHIALSGEA
 HTIGELLIKPCAQDVVRFDEQYSKIDAVQLSNSTVARRIKDLAADIEEELVCRLKICDGFSLQLDES
 ADVSGLAVLLVFRYRFNKSIIEEDLLLCESLQSNATGEEIFNCINSFMQKHEIEWEKVDVCSASRAVD
 GKIAEAVTLIKYVAPESTSSHCLLYRHALAVKIMPTSLKNVLDQAVQIINYIKARPHQSRLKILCEEMG
 AQHTALLLNTEVRWLSRGKVLVRLFELRRELLVFMDSAFRLSDCLTNSSWLLRLAYLADIFTKLNEVNL
 S
 MQGKM

TRTRPLEQKLISEEDLAANDILDYKDDDDKV

Chromatograms:

https://cdn.origene.com/chromatograms/mk6349_h10.zip

Restriction Sites:

Sgfl-Mlul

Cloning Scheme:


ACCN: NM_021211

ORF Size: 546 bp

OTI Disclaimer: The molecular sequence of this clone aligns with the gene accession number as a point of reference only. However, individual transcript sequences of the same gene can differ through naturally occurring variations (e.g. polymorphisms), each with its own valid existence. This clone is substantially in agreement with the reference, but a complete review of all prevailing variants is recommended prior to use. [More info](#)

OTI Annotation: This clone was engineered to express the complete ORF with an expression tag. Expression varies depending on the nature of the gene.

Components: The ORF clone is ion-exchange column purified and shipped in a 2D barcoded Matrix tube containing 10ug of transfection-ready, dried plasmid DNA (reconstitute with 100 ul of water).

- Reconstitution Method:**
1. Centrifuge at 5,000xg for 5min.
 2. Carefully open the tube and add 100ul of sterile water to dissolve the DNA.
 3. Close the tube and incubate for 10 minutes at room temperature.
 4. Briefly vortex the tube and then do a quick spin (less than 5000xg) to concentrate the liquid at the bottom.
 5. Store the suspended plasmid at -20°C. The DNA is stable for at least one year from date of shipping when stored at -20°C.

RefSeq Size: 2756 bp

RefSeq ORF: 2082 bp

Locus ID: 58486

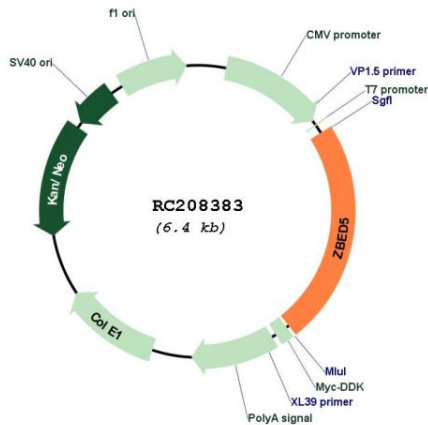
UniProt ID: [Q49AG3](#)

Cytogenetics: 11p15.4

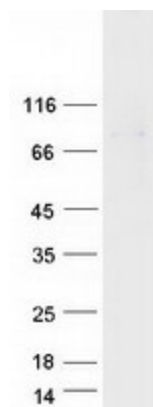
MW: 56.1 kDa

Gene Summary:

This gene is unusual in that its coding sequence is mostly derived from Charlie-like DNA transposon; however, it does not appear to be an active DNA transposon as it is not flanked by terminal inverted repeats. The encoded protein is conserved among the mammalian Laurasiatheria branch. Multiple alternatively spliced variants, encoding the same protein, have been identified. [provided by RefSeq, Jan 2009]

Product images:


Circular map for RC208383



Coomassie blue staining of purified ZBED5 protein (Cat# [TP308383]). The protein was produced from HEK293T cells transfected with ZBED5 cDNA clone (Cat# RC208383) using MegaTran 2.0 (Cat# [TT210002]).