

Product datasheet for RC208380

SPCS3 (NM_021928) Human Tagged ORF Clone

Product data:

Product Type: Expression Plasmids
Product Name: SPCS3 (NM_021928) Human Tagged ORF Clone
Tag: Myc-DDK
Symbol: SPCS3
Synonyms: PRO3567; SPC3; SPC22; SPC22/23; SPC23; YLR066W
Mammalian Cell Selection: Neomycin
Vector: pCMV6-Entry (PS100001)
E. coli Selection: Kanamycin (25 ug/mL)
ORF Nucleotide Sequence: >RC208380 ORF sequence
 Red=Cloning site Blue=ORF Green=Tags(s)

TTTTGTAATACGACTCACTATAGGGCGCCGGGAATTCGTCGACTGGATCCGGTACCGAGGAGATCTGCC
GCC**CGATCGCC**

ATGAACACGGTGTCTCGCGGGCGAACTCACTGTTTCGCTTCTCGCTGAGCGTGTGGCGGCTCACCT
TCGGCTGCTTCATCACCACCGCTTCAAAGACAGGAGCGTCCCGGTGCGGCTGCACGTCTCGGGATCAT
GCTAAAAAATGTAGAAGATTTCACTGGACCTAGAGAAAGAAGTGTCTGGGATTTATCACATTTGATATA
ACTGCTGATCTAGAGAATATATTTGATTGGAATGTTAAGCAGTTGTTTCTTTATTTATCAGCAGAATATT
CAACAAAAAATAATGCTCTGAACCAAGTTGCTCTATGGGACAAGATTGTTTTGAGAGGTGATAATCCGAA
GCTGCTGCTGAAAGATATGAAAACAAAATATTTTTCTTTGACGATGGAAATGGTCTCAAGGAAACAGG
AATGTCACTTTGACCCTGTCTTGGAACGTCGTACCAAATGCTGGAATTCTACCTCTGTGACAGGATCAG
GACACGTATCTGTCCATTTCCAGATACATATGAAATAACGAAGATTAT

ACGCGTACGCGGCCGCTCGAGCAGAACTCATCTCAGAAGAGGATCTGGCAGCAAATGATATCCTGGATT
ACAAGGATGACGACGATAAGGTTTAA

Protein Sequence: >RC208380 protein sequence
 Red=Cloning site Green=Tags(s)

MNTVLSRANSLFAFSLSVMAALTFGCFITTAFKDRSVPVRLHVSRIMLKNVEDFTGPRERSDLGFITFDI
TADLENIQFDWNVKQLFLYLSAEYSTKNNALNQVVLWDKIVLRGDNPKLLKDMKTKYFFFDGNGLKGNR
NVTLLSWNVVPNAGILPLVTGSGHVSVPFPDYEITKSY

TRTRPLEQKLISEEDLAANDILDYKDDDDKV

Chromatograms: https://cdn.origene.com/chromatograms/mk6347_a03.zip



Restriction Sites: SgfI-MluI

Cloning Scheme:



ACCN: NM_021928

ORF Size: 540 bp

OTI Disclaimer: The molecular sequence of this clone aligns with the gene accession number as a point of reference only. However, individual transcript sequences of the same gene can differ through naturally occurring variations (e.g. polymorphisms), each with its own valid existence. This clone is substantially in agreement with the reference, but a complete review of all prevailing variants is recommended prior to use. [More info](#)

OTI Annotation: This clone was engineered to express the complete ORF with an expression tag. Expression varies depending on the nature of the gene.

Components: The ORF clone is ion-exchange column purified and shipped in a 2D barcoded Matrix tube containing 10ug of transfection-ready, dried plasmid DNA (reconstitute with 100 ul of water).

Reconstitution Method:

1. Centrifuge at 5,000xg for 5min.
2. Carefully open the tube and add 100ul of sterile water to dissolve the DNA.
3. Close the tube and incubate for 10 minutes at room temperature.
4. Briefly vortex the tube and then do a quick spin (less than 5000xg) to concentrate the liquid at the bottom.
5. Store the suspended plasmid at -20°C. The DNA is stable for at least one year from date of shipping when stored at -20°C.

RefSeq: [NM_021928.4](#)

RefSeq Size: 4596 bp

RefSeq ORF: 543 bp

Locus ID: 60559

UniProt ID: [P61009](#)

Cytogenetics: 4q34.2

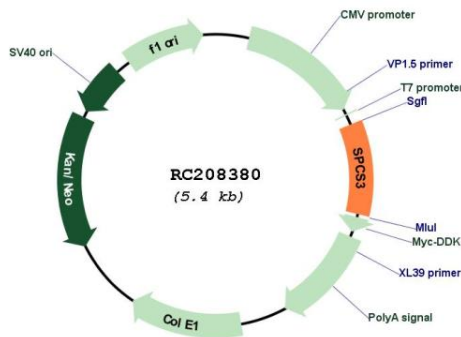
Domains: SPC22

Protein Families: Protease, Transmembrane

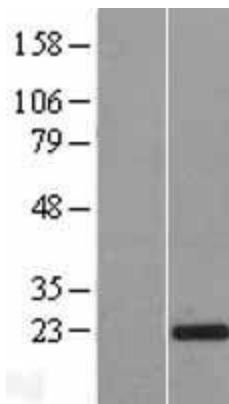
MW: 20.3 kDa

Gene Summary: Component of the microsomal signal peptidase complex which removes signal peptides and other N-terminal peptides from nascent proteins as they are translocated into the lumen of the endoplasmic reticulum.[UniProtKB/Swiss-Prot Function]

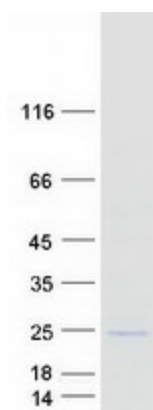
Product images:



Circular map for RC208380



Western blot validation of overexpression lysate (Cat# [LY411894]) using anti-DDK antibody (Cat# [TA50011-100]). Left: Cell lysates from untransfected HEK293T cells; Right: Cell lysates from HEK293T cells transfected with RC208380 using transfection reagent MegaTran 2.0 (Cat# [TT210002]).



Coomassie blue staining of purified SPCS3 protein (Cat# [TP308380]). The protein was produced from HEK293T cells transfected with SPCS3 cDNA clone (Cat# RC208380) using MegaTran 2.0 (Cat# [TT210002]).