

Product datasheet for **RC208379**

KCNK12 (NM_022055) Human Tagged ORF Clone

Product data:

Product Type:	Expression Plasmids
Product Name:	KCNK12 (NM_022055) Human Tagged ORF Clone
Tag:	Myc-DDK
Symbol:	KCNK12
Synonyms:	K2p12.1; THIK-2; THIK2
Mammalian Cell Selection:	Neomycin
Vector:	pCMV6-Entry (PS100001)
E. coli Selection:	Kanamycin (25 ug/mL)



[View online »](#)

ORF Nucleotide Sequence:

>RC208379 representing NM_022055
 Red=Cloning site Blue=ORF Green=Tags(s)

TTTTGTAATACGACTCACTATAGGGCGGCCGGGAATTCGTCGACTGGATCCGGTACCGAGGAGATCTGCC
 GCC**CGGATCGCC**

ATGTCCTCCCGCAGCCCCGGCCCCCGCCCGCGTAGCCGCGCCGCTGCCGCGCCCTCTGTGTCT
 GCTGCTGCTGCCGCCGTTTCGCACCTCAACGAGGACACCGCCGCTTCGTGCTGCTGGCGGCTCATCGG
 CCTCTACCTGGTGGCGGGTGCCACAGTCTTCTCGGCGCTCGAGAGCCCCGGCGAGCGGAGGCGCGGGCG
 CGCTGGGGCGCCACGCTGCGCAACTTCAGCGCTGCGCACGGCGTGGCCGAGCCAGAGCTGCGCGCTTCC
 TCCGGCACTACGAGGCCGCGCTGGCCGCCGGCTCCGCGCCGACGCGCTGCGCCCGCTGGGACTTCCC
 CGGCGCTTCTACTTCGTGGCACCGTGGTGTCAACCATAGGTTTCGGCATGACCACCCCGCGACGGTG
 GCGGGAAGGCCCTTCTCATCGCTACGGGCTGTTCCGGTGCCTGGGACCATCTGTTCTTCAACCTCT
 TCCTGGAGCGCATCATCTCGCTGCTGGCCTTTCATCATGCGCGCTGCCGGAGCGCCAGCTGCGCCGAG
 CGGCTGCTGCCGCCACCTTCCGCCGGCTCCGCGCTCTCGGAGCCGACAGCCTGGCGGGCTGGAAG
 CCCTCGGTGTACCACGTGCTGCTCATCCTGGGCCGTTTCGCCGCTGCTGCTCCTGCTGCGCCTCGGCCA
 TGTACACCAGCGTGGAGGGCTGGGACTACGTGGACTCGCTCTACTTCTGCTTCGTACCTTCAGCACCAT
 CGGCTTCGGGGACCTGGTGGAGCAGCCAGCACGCCGCTACCGGAACCAGGGGCTCTACCGCTGGGCAAC
 TTCTCTTTCATCTGCTCGGCGTGTGCTGCATTTACTCGCTTCAACGTATCTCCATCTCATCAAGC
 AGGTGCTCAACTGGATGCTGCGCAAGCTGAGTGCCTGCTGCGCGCGCTGCTGCCCGGCTCTGGCGC
 GCCCTGGCCCGCGCAATGCCATACCCAGGCTCCCGGCTGCGCCGCCGCTGGCCGCGCTCGGCGCC
 GACCCCGCGCCGCGACAGCGACGCCGAGGGCCGCCCTCTCGGGCGAGCTCATCTCCATGCGCGACC
 TCACGGCCTCAACAAGGTGCTGCTGGCGCTGCTGCAGAAGCAGCTGTCGGAGACGGCAACGGCTACCC
 GCGCAGCGTGTGCGTCAACACGCCGCAACCGGCTTCTCGGGCGCGTGGCGCGCTGGGCATCATGAAC
 AACCGGCTGGCCGAGACCAGCGCTCCAGG

ACGCGTACGCGGCCGCTCGAGCAGAACTCATCTCAGAAGAGGATCTGGCAGCAATGATATCCTGGATT
 ACAAGGATGACGACGATAAGGTTTAA

Protein Sequence:

>RC208379 representing NM_022055
 Red=Cloning site Green=Tags(s)

MSSRSRPPPPRRSRRLPRPSCCCCCRRSHLNEDTGRFVLLAALIGLYLVAGATVFSALSPGAEARA
 RWGATLRNFSAAHGVAEPELRAFLRHYEALAAGVRADALRPRWDFGAFYFVGTVVSTIGFGMTTPATV
 GGKAFLIAYGLFGCAGTILFFNLFLERIISLLAFIMRACRERQLRRSGLLPATFRRGSALSEADSLAGWK
 PSVYHVLLILGLFAVLLSCCASAMYTSVEGWYVDSL YFCVTFSTIGFGDLVSSQHAAYRNQGLYRLGN
 FLFILLGVCCIIYSLFNVISILIKQVLNWMRLKLSRCCARCCPAPGAPLARRNAITPGSRLRRRLAALGA
 DPAARDSDAEGRRLSGELISMRDLTASNKVSLLAQQLSETANGYPRSVNTRQNGFSGGVGALGIMN
 NRLAETSASR

TRTRPLEQKLISEEDLAANDILDYKDDDDKV

Chromatograms:

https://cdn.origene.com/chromatograms/mg3868_d09.zip

Restriction Sites:

Sgfl-Mlul

Cloning Scheme:


ACCN: NM_022055

ORF Size: 1290 bp

OTI Disclaimer: The molecular sequence of this clone aligns with the gene accession number as a point of reference only. However, individual transcript sequences of the same gene can differ through naturally occurring variations (e.g. polymorphisms), each with its own valid existence. This clone is substantially in agreement with the reference, but a complete review of all prevailing variants is recommended prior to use. [More info](#)

OTI Annotation: This clone was engineered to express the complete ORF with an expression tag. Expression varies depending on the nature of the gene.

Components: The ORF clone is ion-exchange column purified and shipped in a 2D barcoded Matrix tube containing 10ug of transfection-ready, dried plasmid DNA (reconstitute with 100 ul of water).

Reconstitution Method:

1. Centrifuge at 5,000xg for 5min.
2. Carefully open the tube and add 100ul of sterile water to dissolve the DNA.
3. Close the tube and incubate for 10 minutes at room temperature.
4. Briefly vortex the tube and then do a quick spin (less than 5000xg) to concentrate the liquid at the bottom.
5. Store the suspended plasmid at -20°C. The DNA is stable for at least one year from date of shipping when stored at -20°C.

RefSeq: [NM_022055.1](#), [NP_071338.1](#)

RefSeq Size: 1449 bp

RefSeq ORF: 1293 bp

Locus ID: 56660

UniProt ID: [Q9HB15](#)

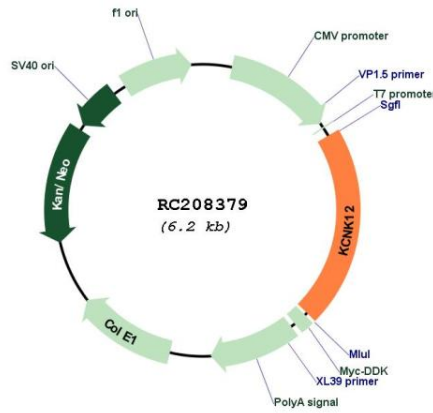
Cytogenetics: 2p16.3

Protein Families: Druggable Genome, Ion Channels: Potassium, Transmembrane

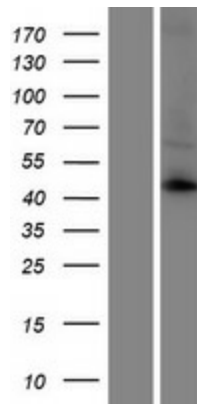
MW: 46.7 kDa

Gene Summary: This gene encodes one of the members of the superfamily of potassium channel proteins containing two pore-forming P domains. The product of this gene has not been shown to be a functional channel, however, it may require other non-pore-forming proteins for activity. [provided by RefSeq, Jul 2008]

Product images:



Circular map for RC208379



Western blot validation of overexpression lysate (Cat# [LY411805]) using anti-DDK antibody (Cat# [TA50011-100]). Left: Cell lysates from untransfected HEK293T cells; Right: Cell lysates from HEK293T cells transfected with RC208379 using transfection reagent MegaTran 2.0 (Cat# [TT210002]).