

Product datasheet for **RC208378**

RAB17 (NM_022449) Human Tagged ORF Clone

Product data:

Product Type: Expression Plasmids
Product Name: RAB17 (NM_022449) Human Tagged ORF Clone
Tag: Myc-DDK
Symbol: RAB17
Mammalian Cell Selection: Neomycin
Vector: pCMV6-Entry (PS100001)
E. coli Selection: Kanamycin (25 ug/mL)
ORF Nucleotide Sequence: >RC208378 ORF sequence
 Red=Cloning site Blue=ORF Green=Tags(s)

TTTTGTAATACGACTCACTATAGGGCGGCCGGAATTCGTCGACTGGATCCGGTACCGAGGAGATCTGCC
 GCC**CGATCGCC**

ATGGCACAGGCACACAGGACCCCCAGCCAGGGCTGCCCCAGCCAGCCCCGTGTGTTCAAGCTGGTTC
 TCCTGGGAAGTGGCTCCGTGGGTAAGTCCAGCTTGGCTCTTCGGTACGTGAAGAACGACTTCAAGAGTAT
 CCTGCCTACGGTGGGCTGTGCGTTCTTCACAAAGTGGTGGATGTGGGTGCCACCTCTCTGAAGCTTGAG
 ATCTGGGACACAGCTGGCCAGGAGAAGTACCACAGCGTCTGCCACCTCTACTTCAGGGGTGCCAACGCTG
 CGCTTCTGGTGTACGACATCACCAGGAAGGATTCCTTCCCAAGGCTCAGCAGTGGTGAAGGACCTGGA
 GGAGGACTGCACCCAGGAGAAGTCTGGTGATGCTGGTGGGCAACAAGACGGACCTCAGCCAGGAGCGG
 GAGGTGACCTTCCAGGAAGGGAAGGAGTTTGCCGACAGCCAGAAGTTGCTGTTTCATGGAACTTCGGCCA
 AACTGAACCACCAGGTGTGCGAGGTGTTCAATACAGTGGCCCAAGAGCTACTGCAGAGAAGCGACGAGGA
 GGGCCAGGCTCTACGGGGGATGCAGCTGTGGCTCTGAACAAGGGGCCCGCAGGCGAGGCCAAATGCTGC
 GCCAC

ACGCGTACGCGGCCGCTCGAGCAGAACTCATCTCAGAAGAGGATCTGGCAGCAATGATATCTGGATT
 ACAAGGATGACGACGATAAGGTTTAA

Protein Sequence: >RC208378 protein sequence
 Red=Cloning site Green=Tags(s)

MAQAHRTQPRAAPSQPRVFKLVLLGSGSVGKSSLALRYVKNDFKSILPTVGCFFTKVVDVGATSLKLE
 IWDTAGQEKYHSVCHLYFRGANAALLVYDITRKDSFLKAQQWLKDLEELHPGEVLVMLVGNKTDLSQER
 EVTFQEGKEFADSQKLLFMETSAKLNHQVSEVFNTVAQELLQRSDEEGQALRGDAVALNKGPARQAKCC
 AH

TRTRPLEQKLISEEDLAANDILDYKDDDDKV



Chromatograms: https://cdn.origene.com/chromatograms/mk6090_g03.zip

Restriction Sites: SgfI-MluI

Cloning Scheme:



ACCN: NM_022449

ORF Size: 636 bp

OTI Disclaimer: The molecular sequence of this clone aligns with the gene accession number as a point of reference only. However, individual transcript sequences of the same gene can differ through naturally occurring variations (e.g. polymorphisms), each with its own valid existence. This clone is substantially in agreement with the reference, but a complete review of all prevailing variants is recommended prior to use. [More info](#)

OTI Annotation: This clone was engineered to express the complete ORF with an expression tag. Expression varies depending on the nature of the gene.

Components: The ORF clone is ion-exchange column purified and shipped in a 2D barcoded Matrix tube containing 10ug of transfection-ready, dried plasmid DNA (reconstitute with 100 ul of water).

Reconstitution Method:

1. Centrifuge at 5,000xg for 5min.
2. Carefully open the tube and add 100ul of sterile water to dissolve the DNA.
3. Close the tube and incubate for 10 minutes at room temperature.
4. Briefly vortex the tube and then do a quick spin (less than 5000xg) to concentrate the liquid at the bottom.
5. Store the suspended plasmid at -20°C. The DNA is stable for at least one year from date of shipping when stored at -20°C.

RefSeq: [NM_022449.4](#)

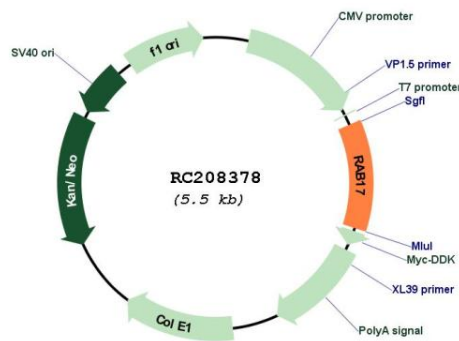
RefSeq Size: 2018 bp

RefSeq ORF: 639 bp

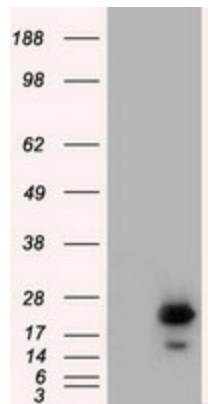
Locus ID: 64284

UniProt ID: [Q9H0T7](#)
Cytogenetics: 2q37.3
Domains: ras, RAN, RAS, RHO, RAB
Protein Families: Druggable Genome
MW: 23.5 kDa
Gene Summary: The Rab subfamily of small GTPases plays an important role in the regulation of membrane trafficking. RAB17 is an epithelial cell-specific GTPase (Lutcke et al., 1993 [PubMed 8486736]). [supplied by OMIM, Oct 2009]

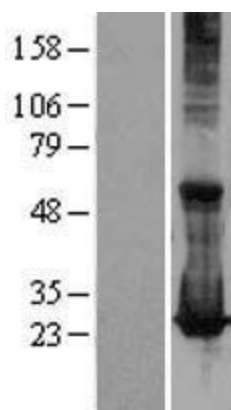
Product images:



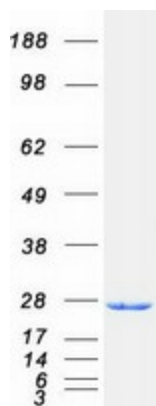
Circular map for RC208378



HEK293T cells were transfected with the pCMV6-ENTRY control (Cat# [PS100001], Left lane) or pCMV6-ENTRY RAB17 (Cat# RC208378, Right lane) cDNA for 48 hrs and lysed. Equivalent amounts of cell lysates (5 ug per lane) were separated by SDS-PAGE and immunoblotted with anti-RAB17 (Cat# [TA501239]). Positive lysates [LY402920] (100ug) and [LC402920] (20ug) can be purchased separately from OriGene.



Western blot validation of overexpression lysate (Cat# [LY402920]) using anti-DDK antibody (Cat# [TA50011-100]). Left: Cell lysates from untransfected HEK293T cells; Right: Cell lysates from HEK293T cells transfected with RC208378 using transfection reagent MegaTran 2.0 (Cat# [TT210002]).



Coomassie blue staining of purified RAB17 protein (Cat# [TP308378]). The protein was produced from HEK293T cells transfected with RAB17 cDNA clone (Cat# RC208378) using MegaTran 2.0 (Cat# [TT210002]).