

Product datasheet for RC208373

C6orf134 (ATAT1) (NM_001031722) Human Tagged ORF Clone

Product data:

Product Type:	Expression Plasmids
Product Name:	C6orf134 (ATAT1) (NM_001031722) Human Tagged ORF Clone
Tag:	Myc-DDK
Symbol:	C6orf134
Synonyms:	alpha-TAT; alpha-TAT1; C6orf134; MEC17; Nbla00487; TAT
Mammalian Cell Selection:	Neomycin
Vector:	pCMV6-Entry (PS100001)
E. coli Selection:	Kanamycin (25 ug/mL)
ORF Nucleotide Sequence:	>RC208373 ORF sequence Red=Cloning site Blue=ORF Green=Tags(s)

TTTTGTAATACGACTCACTATAGGGCGCCGGGAATTCGTCGACTGGATCCGGTACCGAGGAGATCTGCC
GCC**CGATCGCC**

ATGTGGTTGACCTGGCCTTTCTGCTTCTCACAATAACCTTAAGGGAGGAGGGAGTGTGCCACCTTGAAA
GTGTTGATCTACAGCAGCAAATTATGACCATTATAGATGAACTGGGCAAGGCTTCTGCCAAGGCCAGAA
TCTTTCCGCTCCTATCACTAGTGCATCAAGGATGCAGAGTAACCGCCATGTTGTTTATATTCTCAAAGAC
AGTTCAGCCCACCGGCTGAAAAGGAGCCATTATTGGTTTCATCAAAGTTGGATACAAGAAGCTCTTTG
TACTGGATGATCGTGAGGCTCATAATGAGGTAGAACCACCTTTCATCCTGGACTTTTACATCCATGAGTC
TGTGCAACGCCATGGCCATGGGCGAGAACTCTTCCAGTATATGTTGCAGAAGGAGCGAGTGAACCGCAC
CAACTGGCAATTGACCGACCCTCACAGAAGCTGCTGAAATTCCTGAATAAGCACTACAATCTGGAGACCA
CAGTCCCACAGGTGAACAACCTTTGTGATCTTTGAAGGCTTCTTTGCCATCAACATCGGCCCCCTGCTCC
CTCTCTGAGGGCAACTCGACTCTCGTGTGCTGCAGTCGATCCACGCCCGCTGCTCCAGCAAGGAAG
CTGCCACCCAAGAGAGCAGAGGGAGACATCAAGCCATACTCCTCTAGTGACCGAGAATTTCTGAAGGTAG
CTGTGGAGCCTCCTTGGCCCTAAACAGGGCCCTCGCCGCGCCACACCTCCAGCCCACCCACCCCCCG
CTCCAGCAGCCTGGGAACTCACCAGAACGAGGTCCCCCGCCCTTTGTGCCAGAGCAGGAGCTGCTG
CGTTCCTTGGCCTCTGCCCCACACCCCTACCGCCGCTTCTGTTGGCTGCTGACCTGGGGGACAGC
CAGCTCAACGTCGTCGACCCAGGGGACTCCCCAGGTCTGGTAGCCCAAGCTGCTGCTACAGCCGCCA
TGGGGGGTGAATTCCTCATCCCCAATACAGGCAACCAAGACTCCAAGCAGGGAGAACAGGAAACAAAG
AATAGGTCTGCCAGTGAGGAGCAGGCCTTGTACAGGATGGGTCTGGGAGAAGCCATGCACACAGCTC
CTCCACAGGCCCGCCCGCCAGCCAGTCTGGACAGTGGGTGGGACATACTCAACGCCAGGTTTCAT
TCGAAACCTGCAGGAACGTCGCAGCACCAGGCCTTGG

ACGGTACGGCGCGCTCGAGCAGAACTCATCTCAGAAGAGGATCTGGCAGCAAATGATATCTGGATT
ACAAGGATGACGACGATAAGGTTTAA



Protein Sequence: >RC208373 protein sequence
Red=Cloning site Green=Tags(s)

MWLTWPFCLTITLREEGVCHLESVDLQQQIMTIIDELGKASAKAQNLSAPITSASRMQSNRHVVYILKD
 SSARPAGKGAIIIGFIKVGKFLVDDREAHNEVEPLCILDYIHEVQRHGHGRELFQYMLQKERVEPH
 QLAI DRPSQKLLKFLNKHYNLETTVPQVNNFVIFEGFFAHQHRPPAPSLRATRHSRAAAVDPTPAAPARK
 LPPKRAEGDIKPYSSSDREFLKVAVEPPWPLNRAPRRATPPAHPPRSSLGNSPERGRLRPFVPEQELL
 RSLRLCPPHTARLLLAADPGGSPAQRRTTRGTPPGLVAQSCCYSRHGGVNSSPNTGNQDSKQGEQETK
 NRSASEEQALSQDGSGEKPMHTAPPQAPPAQSWTVGGDILNARFIRNLQERRSTRPW

TRTRPLEQKLISEEDLAANDILDYKDDDDKV

Chromatograms: https://cdn.origene.com/chromatograms/mk6347_d10.zip

Restriction Sites: SgfI-MluI

Cloning Scheme:



* The last codon before the Stop codon of the ORF

ACCN: NM_001031722

ORF Size: 1227 bp

OTI Disclaimer: The molecular sequence of this clone aligns with the gene accession number as a point of reference only. However, individual transcript sequences of the same gene can differ through naturally occurring variations (e.g. polymorphisms), each with its own valid existence. This clone is substantially in agreement with the reference, but a complete review of all prevailing variants is recommended prior to use. [More info](#)

OTI Annotation: This clone was engineered to express the complete ORF with an expression tag. Expression varies depending on the nature of the gene.

Components: The ORF clone is ion-exchange column purified and shipped in a 2D barcoded Matrix tube containing 10ug of transfection-ready, dried plasmid DNA (reconstitute with 100 ul of water).

Reconstitution Method:

1. Centrifuge at 5,000xg for 5min.
2. Carefully open the tube and add 100ul of sterile water to dissolve the DNA.
3. Close the tube and incubate for 10 minutes at room temperature.
4. Briefly vortex the tube and then do a quick spin (less than 5000xg) to concentrate the liquid at the bottom.
5. Store the suspended plasmid at -20°C. The DNA is stable for at least one year from date of shipping when stored at -20°C.

Note: Plasmids are not sterile. For experiments where strict sterility is required, filtration with 0.22um filter is required.

RefSeq: [NM_001031722.4](#)

RefSeq Size: 1740 bp

RefSeq ORF: 1230 bp

Locus ID: 79969

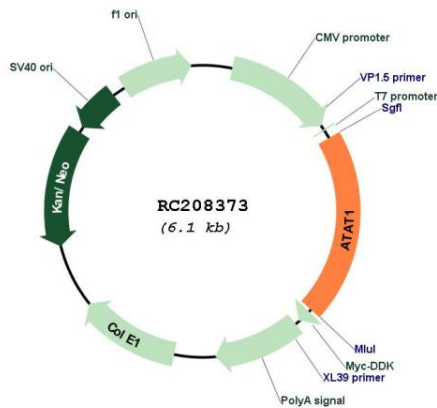
UniProt ID: [Q5SQI0](#)

Cytogenetics: 6p21.33

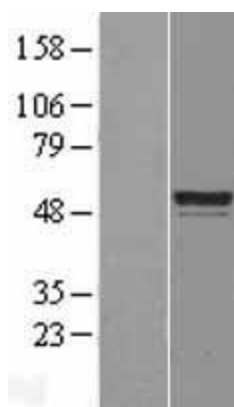
MW: 45.6 kDa

Gene Summary: This gene encodes a protein that localizes to clathrin-coated pits, where it acetylates alpha tubulin on lysine 40. This process may be important in microtubule growth, for instance during chemotaxis and the formation of cilium. Alternative splicing results in multiple transcript variants. [provided by RefSeq, Jan 2016]

Product images:



Circular map for RC208373



Western blot validation of overexpression lysate (Cat# [LY422172]) using anti-DDK antibody (Cat# [TA50011-100]). Left: Cell lysates from untransfected HEK293T cells; Right: Cell lysates from HEK293T cells transfected with RC208373 using transfection reagent MegaTran 2.0 (Cat# [TT210002]).