

Product datasheet for RC208370

CCL14 (NM_032963) Human Tagged ORF Clone

Product data:

Product Type:	Expression Plasmids
Product Name:	CCL14 (NM_032963) Human Tagged ORF Clone
Tag:	Myc-DDK
Symbol:	CCL14
Synonyms:	CC-1; CC-3; CKB1; HCC-1; HCC-1(1-74); HCC-1/HCC-3; HCC-3; MCIF; NCC-2; NCC2; SCYA14; SCYL2; SY14
Mammalian Cell Selection:	Neomycin
Vector:	pCMV6-Entry (PS100001)
E. coli Selection:	Kanamycin (25 ug/mL)
ORF Nucleotide Sequence:	>RC208370 ORF sequence Red=Cloning site Blue=ORF Green=Tags(s)

TTTTGTAATACGACTCACTATAGGGCGGCCGGAATTCGTCGACTGGATCCGGTACCGAGGAGATCTGCC
GCCGCGATCGCC

ATGAAGATCTCCGTGGCTGCCATTCCCTTCTTCCTCCTCATCACCATCGCCCTAGGGACCAAGACTGAAT
CCTCCTCACGGGGACCTTACCACCCCTCAGAGTGCTGCTTACCTACACTACCTACAAGATCCCGCGTCA
GCGGATTATGGATTACTATGAGACCAACAGCCAGTGCTCCAAGCCGGAATTGTCTTCATACCAAAAGG
GGCCATTCCGTCTGTACCAACCCAGTGACAAGTGGGTCCAGGACTATATCAAGGACATGAAGGAGAAC

ACGCGTACGCGGCCGCTCGAGCAGAAACTCATCTCAGAAGAGGATCTGGCAGCAATGATATCCTGGATT
ACAAGGATGACGACGATAAGGTTTAA

Protein Sequence:	>RC208370 protein sequence Red=Cloning site Green=Tags(s)
	MKISVAAIPFFLLITIALGKTESSSRGPYHPSECCFTYTTYKIPRQRIMDYETNSQCSKPGIVFITKR GHSVCTNPSDKWVQDYIKDMKEN
	TRTRPLEQKLISEEDLAANDILDYKDDDDKV

Chromatograms:	https://cdn.origene.com/chromatograms/mk6347_a08.zip
Restriction Sites:	Sgfl-MluI



[View online »](#)

Cloning Scheme:


ACCN: NM_032963

ORF Size: 279 bp

OTI Disclaimer: The molecular sequence of this clone aligns with the gene accession number as a point of reference only. However, individual transcript sequences of the same gene can differ through naturally occurring variations (e.g. polymorphisms), each with its own valid existence. This clone is substantially in agreement with the reference, but a complete review of all prevailing variants is recommended prior to use. [More info](#)

OTI Annotation: This clone was engineered to express the complete ORF with an expression tag. Expression varies depending on the nature of the gene.

Components: The ORF clone is ion-exchange column purified and shipped in a 2D barcoded Matrix tube containing 10ug of transfection-ready, dried plasmid DNA (reconstitute with 100 ul of water).

- Reconstitution Method:**
1. Centrifuge at 5,000xg for 5min.
 2. Carefully open the tube and add 100ul of sterile water to dissolve the DNA.
 3. Close the tube and incubate for 10 minutes at room temperature.
 4. Briefly vortex the tube and then do a quick spin (less than 5000xg) to concentrate the liquid at the bottom.
 5. Store the suspended plasmid at -20°C. The DNA is stable for at least one year from date of shipping when stored at -20°C.

Note: Plasmids are not sterile. For experiments where strict sterility is required, filtration with 0.22um filter is required.

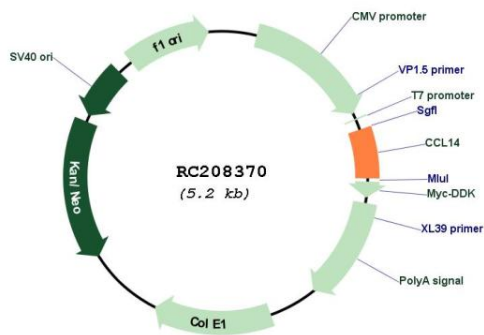
RefSeq: [NM_032963.4](#)

RefSeq Size: 506 bp

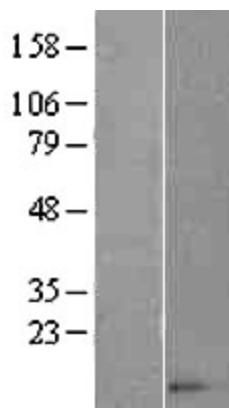
RefSeq ORF: 282 bp

Locus ID: 6358
UniProt ID: [Q16627](#)
Cytogenetics: 17q12
Domains: IL8
Protein Families: Druggable Genome, Secreted Protein
Protein Pathways: Chemokine signaling pathway, Cytokine-cytokine receptor interaction
MW: 10.7 kDa
Gene Summary: This gene, chemokine (C-C motif) ligand 14, is one of several CC cytokine genes clustered on 17q11.2. The CC cytokines are secreted proteins characterized by two adjacent cysteines. The cytokine encoded by this gene induces changes in intracellular calcium concentration and enzyme release in monocytes. Multiple transcript variants encoding different isoforms have been found for this gene. Read-through transcripts are also expressed that include exons from the upstream cytokine gene, chemokine (C-C motif) ligand 15, and are represented as GeneID: 348249. [provided by RefSeq, Dec 2009]

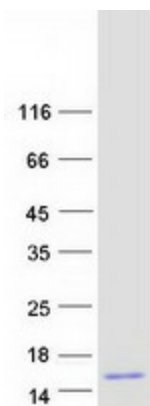
Product images:



Circular map for RC208370



Western blot validation of overexpression lysate (Cat# [LY409847]) using anti-DDK antibody (Cat# [TA50011-100]). Left: Cell lysates from untransfected HEK293T cells; Right: Cell lysates from HEK293T cells transfected with RC208370 using transfection reagent MegaTran 2.0 (Cat# [TT210002]).



Coomassie blue staining of purified CCL14 protein (Cat# [TP308370]). The protein was produced from HEK293T cells transfected with CCL14 cDNA clone (Cat# RC208370) using MegaTran 2.0 (Cat# [TT210002]).