

## Product datasheet for **RC208368**

### DGCR6 (NM\_005675) Human Tagged ORF Clone

#### Product data:

**Product Type:** Expression Plasmids  
**Product Name:** DGCR6 (NM\_005675) Human Tagged ORF Clone  
**Tag:** Myc-DDK  
**Symbol:** DGCR6  
**Mammalian Cell Selection:** Neomycin  
**Vector:** pCMV6-Entry (PS100001)  
**E. coli Selection:** Kanamycin (25 ug/mL)  
**ORF Nucleotide Sequence:** >RC208368 representing NM\_005675  
Red=Cloning site Blue=ORF Green=Tags(s)

TTTTGTAATACGACTCACTATAGGGCGGCCGGAATTCGTCGACTGGATCCGGTACCGAGGAGATCTGCC  
GCCGCGATCGCC

ATGGAGCGCTACGCGGGCGCCTTGGAGGAGGTGGCGGACGGTGCCCGGCAGCAGGAGCGACACTACCAGC  
 TGCTGTGCGCGTTACAGAGCCTGGTGAAGGAGTTGCCAGCTCATTCCAGCAGCGCTTGTCTACACCAC  
 GCTGAGCGACCTGGCCCTGGCGCTTCTCGACGGCACCGTGTTCGAAATCGTGCAGGGGCTACTGGAGATC  
 CAGCACCTCACCGAAAAGAGCCTGTACAACCAGCGCCTGCGCCTACAGAACGAGCATCGAGTGTCTCAGGC  
 AGGCGCTGCGGCAGAAGCACAGGAAGCCAGCAGGCTGCCGGCCCCATAACCTGCCTGTGCTTCAGGC  
 GGCTCAGCAGCGAGAAGTACAGGCGGTGGAGCACCGGATCCGTGAGGAGCAGCGGGGATGGACCGAAG  
 ATCGTCTGGAGCTGGACCGGAAGGTGGCTGACCAGCAGACACTGGAGAAGCGGGGTGGCTGGCT  
 TCTACGTGACCACCAACCCACAGGAGCTGATGCTGCAGATGAACCTGCTGGAACCTCATCCGGAAGCTGCA  
 GCAGAGGGGCTGCTGGCAGGGAAGGCAGCCCTGGGGCTAGGAGGTCCTGGCAGTTGCCTGCTGCCCA  
 TGTGACCAGAAAGGCAGCCCTGTCCACCA

ACGCGTACGCGGCCGCTCGAGCAGAAACTCATCTCAGAAGAGGATCTGGCAGCAATGATATCCTGGATT  
 ACAAGGATGACGACGATAAGGTTTAA

**Protein Sequence:** >RC208368 representing NM\_005675  
Red=Cloning site Green=Tags(s)

MERYAGALEEVADGARQQERHYQLLSALQSLVKELPSSFQQLSYTTLSDLALALLDGTVFIVQGLLEI  
 QHLTEKSLYNQRLRLQNEHRVLRQALRQKHQEAQQACRPHNLPVLQAAQQRELEAVEHRIRREEQRAMDQK  
 IVLELDRKVADQQSTLEKAGVAGFYVTTNPQELMLQMNLELIRKLQQRGCWAGKAALGLGGPWQLPAAQ  
 CDQKGSPPVP

TRTRPLEQKLISEEDLAANDILDYKDDDDKV



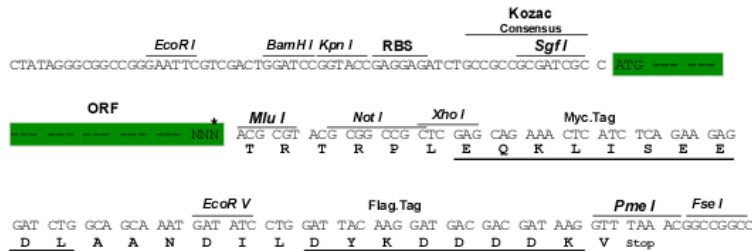
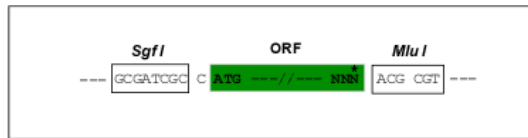
[View online »](#)

Chromatograms: [https://cdn.origene.com/chromatograms/ja1443\\_a10.zip](https://cdn.origene.com/chromatograms/ja1443_a10.zip)

Restriction Sites: SgfI-MluI

Cloning Scheme:

Cloning sites used for ORF Shuttling:



\* The last codon before the Stop codon of the ORF

ACCN: NM\_005675

ORF Size: 660 bp

OTI Disclaimer: The molecular sequence of this clone aligns with the gene accession number as a point of reference only. However, individual transcript sequences of the same gene can differ through naturally occurring variations (e.g. polymorphisms), each with its own valid existence. This clone is substantially in agreement with the reference, but a complete review of all prevailing variants is recommended prior to use. [More info](#)

OTI Annotation: This clone was engineered to express the complete ORF with an expression tag. Expression varies depending on the nature of the gene.

Components: The ORF clone is ion-exchange column purified and shipped in a 2D barcoded Matrix tube containing 10ug of transfection-ready, dried plasmid DNA (reconstitute with 100 ul of water).

Reconstitution Method:

1. Centrifuge at 5,000xg for 5min.
2. Carefully open the tube and add 100ul of sterile water to dissolve the DNA.
3. Close the tube and incubate for 10 minutes at room temperature.
4. Briefly vortex the tube and then do a quick spin (less than 5000xg) to concentrate the liquid at the bottom.
5. Store the suspended plasmid at -20°C. The DNA is stable for at least one year from date of shipping when stored at -20°C.

RefSeq: [NM\\_005675.6](#)

RefSeq Size: 1188 bp

RefSeq ORF: 663 bp

Locus ID: 8214

UniProt ID: [Q14129](#)

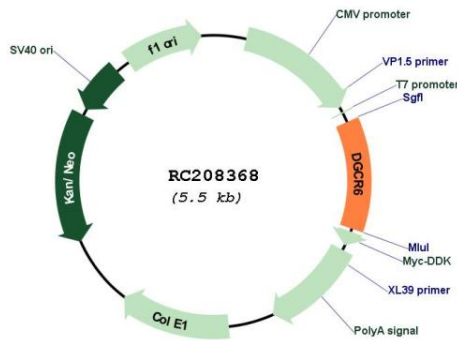
Cytogenetics: 22q11

Protein Families: Druggable Genome, ES Cell Differentiation/IPS

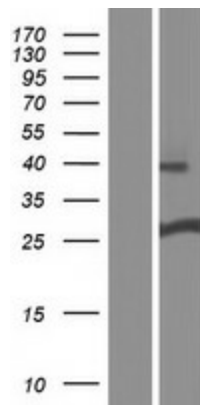
MW: 24.8 kDa

**Gene Summary:** DiGeorge syndrome, and more widely, the CATCH 22 syndrome, are associated with microdeletions in chromosomal region 22q11.2. The product of this gene shares homology with the *Drosophila melanogaster* gonadal protein, which participates in gonadal and germ cell development, and with the gamma-1 subunit of human laminin. This gene is a candidate for involvement in DiGeorge syndrome pathology and in schizophrenia. [provided by RefSeq, Nov 2008]

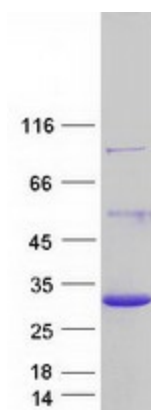
**Product images:**



Circular map for RC208368



Western blot validation of overexpression lysate (Cat# [LY417144]) using anti-DDK antibody (Cat# [TA50011-100]). Left: Cell lysates from untransfected HEK293T cells; Right: Cell lysates from HEK293T cells transfected with RC208368 using transfection reagent MegaTran 2.0 (Cat# [TT210002]).



Coomassie blue staining of purified DGCR6 protein (Cat# [TP308368]). The protein was produced from HEK293T cells transfected with DGCR6 cDNA clone (Cat# RC208368) using MegaTran 2.0 (Cat# [TT210002]).