

Product datasheet for RC208362

PTER (NM_001001484) Human Tagged ORF Clone

Product data:

Product Type:	Expression Plasmids
Tag:	Myc-DDK
Symbol:	PTER
Synonyms:	HPHRP; RPR-1
Mammalian Cell Selection:	Neomycin
Vector:	pCMV6-Entry (PS100001)
E. coli Selection:	Kanamycin (25 ug/mL)

ORF Nucleotide Sequence: >RC208362 ORF sequence
Red=Cloning site Blue=ORF Green=Tags(s)

TTTTGTAATACGACTCACTATAGGGCGCCGGGAATTCGTCGACTGGATCCGGTACCGAGGAGATCTGCC
GCCGCGATCGCC

ATGTCTTCCTTAAGTGGAAAAGTCCAACCGTTTTGGCCTTGTAGAGCCAAGCAAAGTGGCCGTACCC
TGACCCATGAACACCTGGCCATGACCTTTGACTGCTGTTACTGTCCACCTCCCCCGTCCAGGAAGCTAT
TTCAAAGAACCTATCGTGATGAAAAATTTATATTGGATTCAGAAAAACGCCTATCCCATAAAGAAAAC
CTTCAATTAATCAGGAGACAGAAGCCATAAAGGAAGAAGTGTGATTTTAAAGCTAATGGTGGAGGGG
CTTTGGTGGAAAAACAAACCACTGGGATTAGCCGAGACACACAGACGTTGAAGAGGCTTGCAGAAGAGAC
TGGCGTCCATATCATATCTGGAGCCGGTTTTATGTGGATGCAACTCACTCCTCAGAGACCAGGGCCATG
TCAGTGGAGCAGCTTACCGATGTCCTTATGAATGAAATTCCTCATGGAGCTGATGGAACAGTATCAAGT
GTGGCATTATTGGAGAAATGGTTGCTCCTGGCCTTTGACTGAGAGTGAAGAAAGGTTCTCCAGGCCAC
AGCTCATGCCAGGCTCAGCTTGGTTGCTCCTGTTATTATCCATCCTGGACGGAGCTCCAGGGCACCATTC
CAGATTATCCGAATATTGCAAGAAGCAGGCGCAGACATCTCCAAAACAGTCATGTCACACCTGGATAGGA
CTATTCTTGATAAGAAAAGAGCTCTTGGAGTTTGTCTCAGCTTGGCTGCTACTTGGAAATATGATCTCTTTGG
TACTGAACTACTTCATTACCAACTCGGCCAGATATTGACATGCCTGATGATAACAAAAGAATTAGAAGG
GTGCGTCTCCTGGTGGAAAGAGGCTGTGAAGATCGAATTCTGGTAGCACATGACATACATACGAAAACCC
GGCTGATGAAATATGGAGGTCACGGCTATTCTCATATACTACCAATGTTGTTCTAAAATGTTGCTGAG
AGGCATAACTGAGAATGTGCTTGATAAGATTCTAATAGAGAACCCTAAGCAATGGCTAACTTTCAA

ACGCGTACGCGGCCGCTCGAGCAGAACTCATCTCAGAAGAGGATCTGGCAGCAAATGATATCCTGGATT
ACAAGGATGACGACGATAAGGTTTAA



Protein Sequence: >RC208362 protein sequence
 Red=Cloning site Green=Tags(s)

MSSLSGKVQTVLGLVEPSKLGRTLTHEHLAMTFDCCYCPPPCQEAI SKEPIVMKNLYWIKNAYSHKEN
 LQLNQETEAIKEELLYFKANGGGALVENTTTGISRDTQTLKRLAEETGVHII SGAGFYVDATHSSETRAM
 SVEQLTDVLMNEILHGADGTSIKCGIIGEIGCSWPLTESERKVLQATAHAQAQLGCPVI IHPGRSSRAPF
 QIIRILQEAGADISKTVMSHLDRITLDDKELLEFAQLGCYLEYDLFGTELLHYQLGPDIDMPDDNKRIRR
 VRL LVEEGCEDRILVAHD IHTKTRLMKYGGHGYSHIL TNVVPKMLLRGITENVLDKIL IENPKQWLTFK

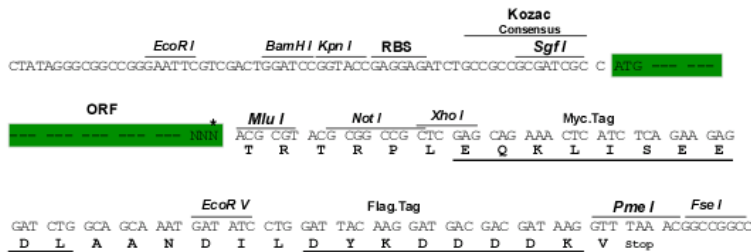
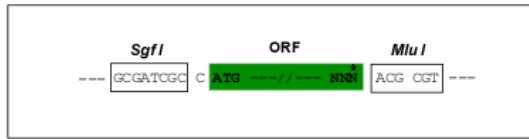
TRTRPLEQKLI SEEDLAANDILDYKDDDDKV

Chromatograms: https://cdn.origene.com/chromatograms/mk6350_h02.zip

Restriction Sites: SgfI-MluI

Cloning Scheme:

Cloning sites used for ORF Shuttling:



* The last codon before the Stop codon of the ORF

ACCN: NM_001001484

ORF Size: 1047 bp

OTI Disclaimer: The molecular sequence of this clone aligns with the gene accession number as a point of reference only. However, individual transcript sequences of the same gene can differ through naturally occurring variations (e.g. polymorphisms), each with its own valid existence. This clone is substantially in agreement with the reference, but a complete review of all prevailing variants is recommended prior to use. [More info](#)

OTI Annotation: This clone was engineered to express the complete ORF with an expression tag. Expression varies depending on the nature of the gene.

Components: The ORF clone is ion-exchange column purified and shipped in a 2D barcoded Matrix tube containing 10ug of transfection-ready, dried plasmid DNA (reconstitute with 100 ul of water).

- Reconstitution Method:**
1. Centrifuge at 5,000xg for 5min.
 2. Carefully open the tube and add 100ul of sterile water to dissolve the DNA.
 3. Close the tube and incubate for 10 minutes at room temperature.
 4. Briefly vortex the tube and then do a quick spin (less than 5000xg) to concentrate the liquid at the bottom.
 5. Store the suspended plasmid at -20°C. The DNA is stable for at least one year from date of shipping when stored at -20°C.

Note: Plasmids are not sterile. For experiments where strict sterility is required, filtration with 0.22um filter is required.

RefSeq: [NM_001001484.2](#)

RefSeq Size: 3826 bp

RefSeq ORF: 1050 bp

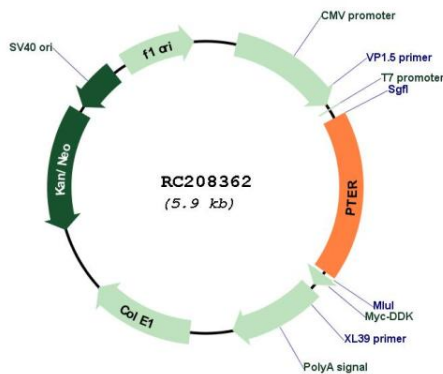
Locus ID: 9317

UniProt ID: [Q96BW5](#)

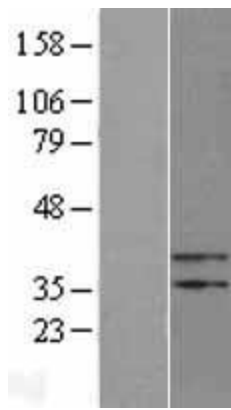
Cytogenetics: 10p13

MW: 39 kDa

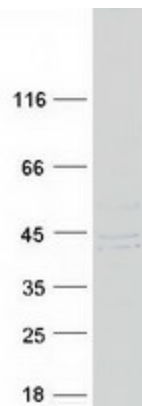
Product images:



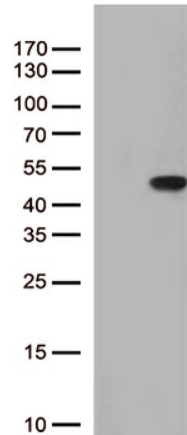
Circular map for RC208362



Western blot validation of overexpression lysate (Cat# [LY424361]) using anti-DDK antibody (Cat# [TA50011-100]). Left: Cell lysates from un-transfected HEK293T cells; Right: Cell lysates from HEK293T cells transfected with RC208362 using transfection reagent MegaTran 2.0 (Cat# [TT210002]).



Coomassie blue staining of purified PTER protein (Cat# [TP308362]). The protein was produced from HEK293T cells transfected with PTER cDNA clone (Cat# RC208362) using MegaTran 2.0 (Cat# [TT210002]).



HEK293T cells were transfected with the pCMV6-ENTRY control (Cat# [PS100001], Left lane) or pCMV6-ENTRY PTER (Cat# RC208362, Right lane) cDNA for 48 hrs and lysed. Equivalent amounts of cell lysates (5 ug per lane) were separated by SDS-PAGE and immunoblotted with anti-PTER (Cat# [TA813177])(1:500).