

Product datasheet for **RC208359**

Protein downstream neighbor of Son (DONSON) (NM_017613) Human Tagged ORF Clone

Product data:

Product Type:	Expression Plasmids
Product Name:	Protein downstream neighbor of Son (DONSON) (NM_017613) Human Tagged ORF Clone
Tag:	Myc-DDK
Symbol:	Protein downstream neighbor of Son
Synonyms:	B17; C21orf60; MIMIS; MISSLA
Mammalian Cell Selection:	Neomycin
Vector:	pCMV6-Entry (PS100001)
E. coli Selection:	Kanamycin (25 ug/mL)



[View online »](#)

ORF Nucleotide Sequence:

>RC208359 ORF sequence, **codon optimized**.
 Due to the complexity of NM_017613, the ORF clone is codon optimized for mammalian Expression.
 The nucleotide sequence differs from the reference sequence, yet the amino acid sequence remains identical.

Red=Cloning site Blue=ORF Green=Tags(s)

TTTTGTAATACGACTCACTATAGGGCGCCGGGAATTCGTCGACTGGATCCGGTACCGAGGAGATCTGCCGCC**GCGATCGCC**

ATGGCCTTGAGTGTGCCGGTTATAGTCTGGTTTCAGAAAACCCCAAGTCTGTCGACTCCGACGAA
 AAAGAGCCCGCTCTAGAGGAGCAGCTGCTTCTCCGCCACGGGAATTGACCGAACCTGCTGCTAGGAGGGC
 CGCACTTGTGCGGGATTGCCACTCAGACCATTCCCTGCCGCCGAGGACGAGGAGGAGTTCTGGAGGA
 GGGCCTGCCGCTGCCAGAAGAAACCCATTCCGCCGCTTGACAATAGACCCAGAGTTGCCGAGAACCC
 CGGACGGCCCGCCGAGAACAGCCTGAAGCACCCGTACCCTTCCTGGATTCAAATCAAGAAAACGACCT
 CCTGTGGGAAGAGAAATTTCCCGAGCGAACTACAGTCACCGAGCTTCCACAAACAAGCCATGTATATTC
 TCCGAGCCGATATTCCATCTAGCAAGTCAACAGAACTGCCTGTGCGATTGGTCAATTAAGTACTAGCTTC
 TCTTTACTAGCTCACAGCCTTTTACCTGGGCCGATCACCTTAAAGCACAAGAAGAAGCACAAGGCCTGGT
 CCAACTGCAGAGCCACAGAGGTGACCCTGCCTAAATCCATCCAAGACCCTAAACTGAGCTCCGAGCTC
 CGCTGCACCTTCCAACAATCACTGATCTATTGGCTCCACCCGCTCTTTCTTGGCTTCCACTTTTTCTC
 GAATTGGCGCCGATCGCAAAATGGCAGGAAAAACATCCCCTTGGAGCAACGATGCCACTTGCAACACGT
 CCTGATGTCTGATTGGTCTGTATCCTTTACGAGTCTTTATAACCTGCTCAAAACGAAACTGTGTCGTAT
 TTCTACGTTTGTACCTATCAGTTTACTGTCTGTTCCGAGCAGCAGGATTAGCTGGAAGTGACTTAATCA
 CAGCTCTCATATCTCCAACAACCGAGGTTTAAAGAGAAGCTATGAGAAATGAAGGTATTGAATTTCTCT
 GCCTTTAATAAAAGAAAGTGCCATAAGAAGGAGACAGCATCTGGAACAAGCTTGGGATATGGGAGGAG
 CAAGCCATCAGTATGAGGATGAAGAGGAAAGTTTTCTGGCTGGAAGAGATGGGTGTGCAAGATAAAA
 TTAAGCCAGACATACTTTCTATCAAGCTGCGTAAAGAGAAACATGAAGTACAATGGATCACAGACC
 TGAATCTGTTGTGTTGGTAAAAGGAATCAACACCTTTACATTGCTCAATTTTTGATTAACCTAAGAGT
 TTAGTTGCTACCTCAGGTCCACAGGCAGGACTTCTCCAACCCTTGTCCCTGTTGCTTCCGAGGTG
 CCACAATGCAAAATGCTTAAAGCACGGAGTGTGAATGTGAAGACACAAGCTTTTCTGGATACAGAGACCA
 ATTTAGTTTGGAGATTACAGGTCTATCATGCCTCATTCTCTGCATTCAGTACCATGCTGCTCAATCT
 TCACAGAGTGGATCTTTCTGCACTGTATCCACACGAGCCAACTGCTGTATTTAATCTGCTGCTGC
 AAATGGACAAAGTACTTGATATGGAGGTTGTTCAAGGAGCTTACTAAGTGTGGTTTGACCCCTAACAC
 TCTGGAGCAACTAGTCAAAATACCGTTACTTGGGAAATCATCTTTACGGAATGTGGTGTGAGAGACTAC
 ATTTATAATTGGAGATCC

ACGCGTACGCGGCCGCTCGAGCAGAACTCATCTCAGAAGAGGATCTGGCAGCAATGATATCCTGGATT
 ACAAGGATGACGACGATAAGGTTTAA

Protein Sequence: >RC208359 representing NM_017613
 Red=Cloning site Green=Tags(s)

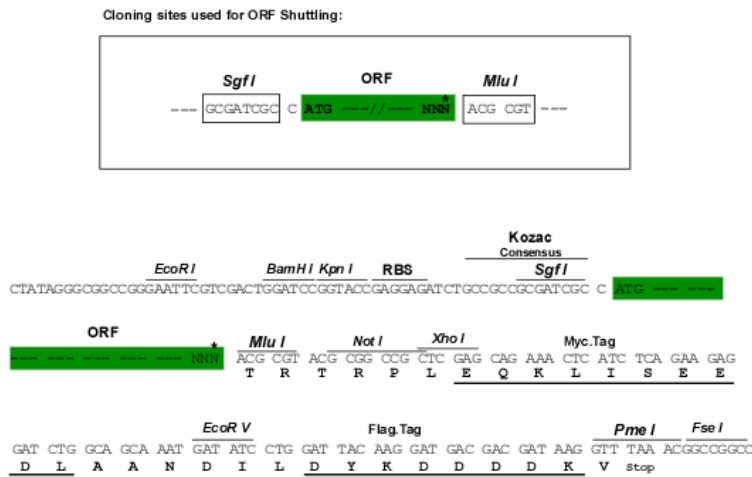
MALSVPGYSPGFRKPPEVVRLRRKRARSRGAAASPPRELTEPAARRAALVAGLPLRPFFAAGGRGGGSGG
 GPAAARRNPFARLDNRPRVAAEPPDGPAREQPEAPVPFLDSNQENDLLWEEKFPERTTVELPQTSYVSF
 SEPDIPSSKSTELPVDWSIKTRLLFTSSQPF TWADHLKAQEEAQLVQHCRA TEVTLPKSIQDPKLSSEL
 RCTFQQSLIYWLHPALSWLPLFPRIGADRKMAGKTSPWSNDATLQHVLMSDWSVSFTSLYNLLKTKLCPY
 FYVCTYQFTVLFRAAGLAGSDLITALISPTTRGLREAMRNEGIEFSLPLIKE SGHKKETASGTSLYGEE
 QAI SDEDEEESF SWLEEMGVQDKIKKPDILSIKLRKEKHEVQMDHRPESVVLVKGINTFTLLNFLINSKS
 LVATSGPQAGLPPTLLSPVAFRGATMQLKARSVNVKTQALSGYRDQFSLEITGPIMPHSLHSLTMLLKS
 SQSGSFSAVLYPHEPTAVFNICLQMDKVL DMEVVHKELTNCGLHPNTLEQLSQIPLL GKSSLRNVVLRDY
 IYNWRS

TRTRPLEQKLISEEDLAANDILDYKDDDDKV

Restriction Sites:

SgfI-MluI

Cloning Scheme:



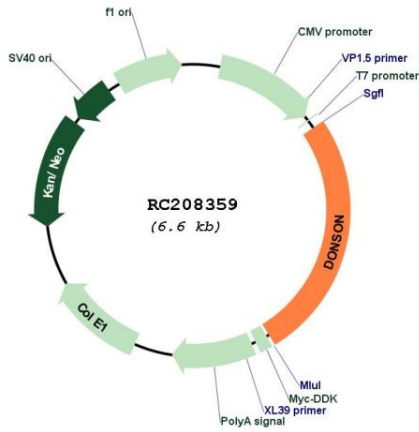
* The last codon before the Stop codon of the ORF

ACCN: NM_017613

ORF Size: 1698 bp

OTI Disclaimer:	<p>Due to the inherent nature of this plasmid, standard methods to replicate additional amounts of DNA in E. coli are highly likely to result in mutations and/or rearrangements. Therefore, OriGene does not guarantee the capability to replicate this plasmid DNA. Additional amounts of DNA can be purchased from OriGene with batch-specific, full-sequence verification at a reduced cost. Please contact our customer care team at custsupport@origene.com or by calling 301.340.3188 option 3 for pricing and delivery.</p> <p>The molecular sequence of this clone aligns with the gene accession number as a point of reference only. However, individual transcript sequences of the same gene can differ through naturally occurring variations (e.g. polymorphisms), each with its own valid existence. This clone is substantially in agreement with the reference, but a complete review of all prevailing variants is recommended prior to use. More info</p>
OTI Annotation:	This clone was engineered to express the complete ORF with an expression tag. Expression varies depending on the nature of the gene.
Components:	The ORF clone is ion-exchange column purified and shipped in a 2D barcoded Matrix tube containing 10ug of transfection-ready, dried plasmid DNA (reconstitute with 100 ul of water).
Reconstitution Method:	<ol style="list-style-type: none"> 1. Centrifuge at 5,000xg for 5min. 2. Carefully open the tube and add 100ul of sterile water to dissolve the DNA. 3. Close the tube and incubate for 10 minutes at room temperature. 4. Briefly vortex the tube and then do a quick spin (less than 5000xg) to concentrate the liquid at the bottom. 5. Store the suspended plasmid at -20°C. The DNA is stable for at least one year from date of shipping when stored at -20°C.
RefSeq:	NM_017613.1 , NM_017613.2 , NM_017613.3 , NP_060083.1
RefSeq Size:	2500 bp
RefSeq ORF:	1701 bp
Locus ID:	29980
UniProt ID:	Q9NYP3
Cytogenetics:	21q22.11
MW:	62.7 kDa
Gene Summary:	This gene lies downstream of the SON gene and spans 10 kb on chromosome 21. The function of this gene is unknown. [provided by RefSeq, Jul 2008]

Product images:



Circular map for RC208359