

Product datasheet for RC208356

POLR3B (NM_018082) Human Tagged ORF Clone

Product data:

Product Type:	Expression Plasmids
Product Name:	POLR3B (NM_018082) Human Tagged ORF Clone
Tag:	Myc-DDK
Symbol:	POLR3B
Synonyms:	C128; HLD8; INMAP; RPC2
Mammalian Cell Selection:	Neomycin
Vector:	pCMV6-Entry (PS100001)
E. coli Selection:	Kanamycin (25 ug/mL)
ORF Nucleotide Sequence:	>RC208356 ORF sequence Red=Cloning site Blue=ORF Green=Tags(s)

TTTTGTAATACGACTCACTATAGGGCGGCCGGAATTCGTCGACTGGATCCGGTACCGAGGAGATCTGCC
GCC**CGATCGC**C

ATGGACGTGCTAGCGGAGGAGTTTGGGAACCTGACTCCGGAGCAGCTGGCGGCCCGATCCCGACTGTAG
AGGAAAAATGGAGGCTGCTTCCAGCATTTTTAAAGGTGAAAGGCCTTGAAACAGCATATAGATTCATT
TAACTATTTTCATTAATGTAGAGATAAAGAAGATAATGAAAGCAATGAAAAGGTTACAAGTGACGCTGAC
CCTATGTGGTACTTAAAATATCTTAATATCTATGTTGGGCTTCTGATGTTGAAGAAAGCTTCAATGTAA
CTAGACCAGTGTCCCTCATGAGTGCCGTTTGGAGACATGACATACTCTGCCCTATTACAGTGGATAT
TGAATATACCCGAGGCAGCCAGAGGATCATCCGCAATGCCTTACCTATCGGCAGAATGCCATAATGCTA
CGTAGTTCAAACTGTGTTCTTACAGAAAAACGCCAGCAGAATTTGCCAACTGAACGAATGTCCCTTAG
ATCCAGGTGGCTACTTTCATTGTTAAAGGAGTAGAAAAAGTTATTCTTATCCAAGAGCAGCTGTCTAAGAA
CAGGATCATCGTGGAGGCTGATAGAAAAGGGGCTGTTGGAGCTTCAGTTACCAGCTTACCCATGAGAAA
AAAAGCAGAACCAATATGGCTGTGAAACAAGGACGATTTATTTGAGGCATAACTTTGTGAGAAGATA
TACCCATTGTCATCATATTTAAGCCATGGGTGTTGAGAGTGACCAGGAAATTGTGCAGATGATTGGAAC
AGAGGAGCACGTGATGGCTGCATTTGGGCCAGTCTGGAAGAGTGCCAGAAAGCTCAGATTTTCACACAG
ATGCAGGCATTTAAAATATATAGGGAACAAGTAAGAAGGCAAGGATGTGGGAGGTGGACCAAAGAAAA
CCAAAATAGAAGAAGCAAGAGAGCTCCTGGCTTCCACCATTCTGACCCATGTCCAGTTAAGGAATTCAA
TTTCCGAGCCAAATGTATCTATACTGCAGTGATGGTGCGAAGAGTTATTCTGGCCAAAGGAGATAATAAA
GTTGACGACAGAGATTATTATGGTAACAAGCGACTGGAATTGGCAGGACAGCTTTTATCTTTCTTTTGG
AAGACTTGTTCAAAAATTTAATTCTGAAATGAAAAAGATTGCCGACCAGGTGATTCCTAAGCAAAGAGC
AGCCAGTTTGTGTTGTCAAACACATGCGCCAAGACCAGATCACCAATGGCATGGTGAATGCTATTTCT
ACCGGAAATTTGGTCTTTAAAGAGATTTAAAATGGACCGCCAGGGTGAACCCAAGTGTCTCGCTTGT
CATATATATCCGCACTGGGCATGATGACAAGAATCTTCCAGTTTAAAAAACGAGAAAAGTGAGTGG
TCCTCGCTCCCTCCAGCCATCTCAGTGGGAATGCTGTGCTTCCGACACTCCTGAAGGAGAGGCATGT



[View online »](#)

GGTTTGGTTAAAACTTGGCCCTTATGACACACATCACAACCTGATATGGAAGATGGACCCATTGTTAAAT
TAGCCAGTAACTTGGGAGTAGAAGATGTGAATTTATTATGTGGGAAGAGCTCTCTTACCCAAATGTGTT
TCTTGTCTTTCTTAATGGTAACATCTTAGGTGTCATTCGAGACCACAAAAAGCTAGTGAATACATTTGCA
CTCATGAGAAGAGCAGGATATATCAATGAATTTGTTTCCATCTCAACAAATCTTACAGATCGATGTGCT
ATATTTCTTCTGATGGGGGAAGGCTATGCAGACCTACATAATTGTCAGAAACAGAAGCCAGCAGTCAC
AAATAACATATGGAAGAGCTGGCCCAAGGTACAGGAATTTGAAGATTTCTTACATGAGAGTCTGGTT
GAATATTTAGATGTGAATGAAGAAAATGATTGTAACATTGCACGTACGAACACACAATTAATAAGACA
CCACCCACTTGGAGATTGAACCCTTCACTCTTCTCGGCGTGTGTGCTGGACTTATCCCATACCCCTACCA
TAACCACTCACCCAGAAACACTTATCAGTGTGCCATGGGAAACAGCCATGGGACTATAGGATACAAC
CAGCGAAACAGAATTGATACTCTCATGTATCTACTAGCATATCCACAAAAACCCATGGTTAAGACAAAA
CCATTGAATTGATAGAATTTGAGAACTGCCAGCTGGACAGAATGCAACAGTTGCTGTGATGAGCTATAG
TGGCTATGATATTGAAGATGCTCTTGTTTTAAACAAGGCCTCTTAGACAGAGGCTTTGGGCGTTGCCTT
GTATATAAAAATGCTAAATGTACGTTGAAACGATACACCAATCAGACTTTTGATAAAGTATGGGGCCCA
TGTTGGATGCTGCTACAAGGAAACCTATCTGGCGACATGAAATCTTAGATGCAGATGGTATTTGTTCTCC
AGGTGAGAAAGTAGAAAACAAACAAGTCTTGTAAATAAGTCCATGCCACAGTGACTCAGATTCCTTTG
GAAGGAAGTAATGTACCACAGCAACCACAGTACAAAGATGTACCCATAACCTACAAGGAGCAACAGACT
CATATATTGAAAAAGTGATGATATCTTCAAATGCTGAAGATGCTTTTCTGATCAAAATGCTGCTGAGACA
GACAAGGCGTCCAGAAATTTGGAGACAAATTCAGCAGTCGTATGGGCAAAAAGGTGTTTGTGGCTTGATC
GTCCCCCAGGAAGACATGCCATTTTGTGATTCTGGCATCTGTCCGGACATCATATGAACCCACACGGCT
TCCCATCACGAATGACGGTGGGGAAGCTCATTGAGCTGCTGGCTGGCAAGGCCGGTGTGCTGGACGGCAG
ATTCCACTACGGCACTGCGTTTGGAGGCAGTAAAGTGAAGGATGTGTGTGAGGACCTCGTTCGCCATGGT
TATAACTACTTGGGAAAGACTATGTTACATCCGGCATCACAGGTGAGCCCTTAGAAGCATACATCTATT
TTGGCCCCGTGACTATCAGAAGCTGAAACACATGGTGTAGATAAAATGCATGCCCGGGCCCGGGGCC
ACGAGCCGTCCTTACCAGGCAACCCACTGAAGGACGGTCTCGTGATGGTGGCTTGCCTCTCGGGGAAATG
GAACGTGACTGTTTAATCGGTTATGGAGCCAGTATGCTTTTGTAGAGAGACTAATGATTTCAAGTGATG
CCTTTGAGGTTGATGTCTGTGGCAGTGTGGACTTCTGGGGTATTCTGGCTGGTGCATTACTGCAAGTC
ATCCTGCCACGTCTTCCCTCCGATTCCGTATGCCTGCAAGCTGCTCTCCAGGAACTACAGTCTATG
AACATCATCCCCAGGTTAAAACTGTCCAAGTACAATGAA

ACGGTACGCGGCCGCTCGAGCAGAACTCATCTCAGAAGAGGATCTGGCAGCAATGATATCTGGATT
ACAAGGATGACGACGATAAGGTTTAA

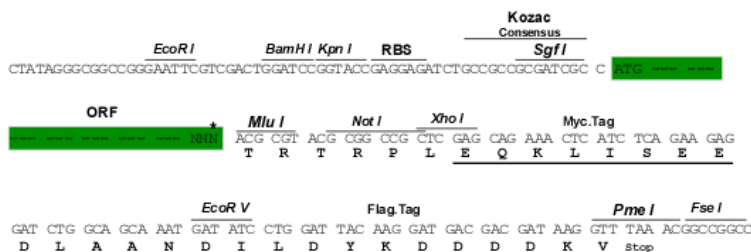
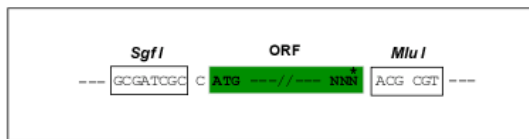
Protein Sequence: >RC208356 protein sequence
 Red=Cloning site Green=Tags(s)

```
MDVLAEEFGNLTPEQLAAPITPVEEKWRLLPAFLKVKGLVKQHIDSFNYFINVEIKKIMKANEKVTSDAD
PMWYLKYLNIYVGLPDVEESFNVTRPVPSPHECRLRDMTYSAPITVDIEYTRGSQRIIRNALPIGRMPIML
RSSNCVLTKGTPAEFAKLNCEPLDPGGYFIVKGVKVLIQEQLSKNRIIVEADRKGAVGASVTSSTHEK
KSRTNMAVKQGRFYLRHNTLSEDIPIVIFKAMGVEDSQEIVQMIIGTEEHVMAAFGPSLEECQAQIFTO
MQALKYIGNKVRQRQMWGGGPKKTKIEEARELLASTILTHVPVKEFNFRAKCIYTAVMVRRVILAQGDNK
VDDRDYIGNKRELAGQLLSLLFEDLFKKFNSEMKKIADQVIPKQRAAQFDVVKHMRQDQITNGMVNAIS
TGNWSLKRFRKMDRQGVTVLSRLSYISALGMMTRISSQFEKTRKVSQPRSLQPSQWMLCPSDTPEGEAC
GLVKNLALMTHITDMDGPIVKLASNLGVEDVNLCCGEELSYPNVFLVFLNGNILGVIRDHKKLVNTRFR
LMRRAGYINEFVSI STNLTDRCVYISSDGGRLCRPYIIVKKQKPAVTNKHMEELAQGYRNFEDFLHESLV
EYLDVNEENDCNIALYEHTINKDTHLEIEPFTLLGVCAGLIPYPHNNQSPRNTYQCAMGKQAMGTIGYN
QRNRIDTLMYLLAYPQKPMVKTKTIELIEFEKLPAGQNATVAVMSYSGYDIEDALVLNKASLDRGFGRCL
VYKNAKCTLKRYTNQTFDKVMGPMLDAATRKPWRHEILDADGICSPGEKVENKQVLVNKSMPTVTQIPL
EGSNVPQPQYKDVPIITYKGATDSYIEKVMISSNAEDAFLIKMLLRQTRRPEIGDKFSSRHGQKGVCGLI
VPQEDMPFCDSGICPDIIMNPHGFPSRMTVGKLIPELLAGKAGVLDGRFHYGTAFGGSKVKDVCEDLVRHG
YNYLGKDYVTSGITGEPLAAYIYFGPVYYQKLKHMVLDKMHARARGPRAVLTRQPTTEGRSDGGLRLGEM
ERDCLIGYGASMLLLERLMISSDAFEVDVCGQCGLLGYSGWCHYCKSSCHVSSLRIPYACKLLFQELQSM
NIIPRLKLSKYNE
```

TRTRPLEQKLISEEDLAANDILDYKDDDDKV

Restriction Sites: SgfI-MluI
Cloning Scheme:

Cloning sites used for ORF Shuttling:



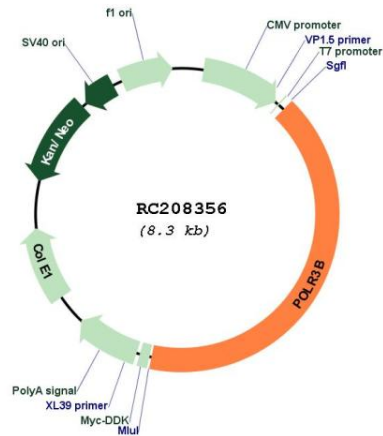
* The last codon before the Stop codon of the ORF

ACCN: NM_018082

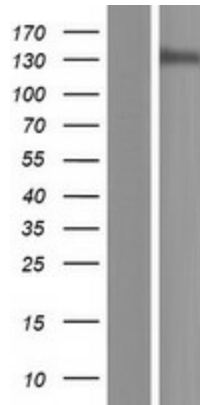
ORF Size: 3399 bp

OTI Disclaimer:	The molecular sequence of this clone aligns with the gene accession number as a point of reference only. However, individual transcript sequences of the same gene can differ through naturally occurring variations (e.g. polymorphisms), each with its own valid existence. This clone is substantially in agreement with the reference, but a complete review of all prevailing variants is recommended prior to use. More info
OTI Annotation:	This clone was engineered to express the complete ORF with an expression tag. Expression varies depending on the nature of the gene.
Components:	The ORF clone is ion-exchange column purified and shipped in a 2D barcoded Matrix tube containing 10ug of transfection-ready, dried plasmid DNA (reconstitute with 100 ul of water).
Reconstitution Method:	<ol style="list-style-type: none">1. Centrifuge at 5,000xg for 5min.2. Carefully open the tube and add 100ul of sterile water to dissolve the DNA.3. Close the tube and incubate for 10 minutes at room temperature.4. Briefly vortex the tube and then do a quick spin (less than 5000xg) to concentrate the liquid at the bottom.5. Store the suspended plasmid at -20°C. The DNA is stable for at least one year from date of shipping when stored at -20°C.
RefSeq:	NM_018082.6
RefSeq Size:	4286 bp
RefSeq ORF:	3402 bp
Locus ID:	55703
UniProt ID:	Q9NW08
Cytogenetics:	12q23.3
Domains:	RNA_pol_Rpb2_6, RNA_pol_Rpb2_7, RNA_pol_Rpb2_2, RNA_pol_Rpb2_1, RNA_pol_Rpb2_3, RNA_pol_Rpb2_4, RNA_pol_Rpb2_5
Protein Families:	Transcription Factors
Protein Pathways:	Cytosolic DNA-sensing pathway, Metabolic pathways, Purine metabolism, Pyrimidine metabolism, RNA polymerase
MW:	127.8 kDa
Gene Summary:	This gene encodes the second largest subunit of RNA polymerase III, the polymerase responsible for synthesizing transfer and small ribosomal RNAs in eukaryotes. The largest subunit and the encoded protein form the catalytic center of RNA polymerase III. Mutations in this gene are a cause of hypomyelinating leukodystrophy. Alternatively spliced transcript variants encoding multiple isoforms have been observed for this gene. [provided by RefSeq, Dec 2011]

Product images:



Circular map for RC208356



Western blot validation of overexpression lysate (Cat# [LY413324]) using anti-DDK antibody (Cat# [TA50011-100]). Left: Cell lysates from untransfected HEK293T cells; Right: Cell lysates from HEK293T cells transfected with RC208356 using transfection reagent MegaTran 2.0 (Cat# [TT210002]).