

## Product datasheet for RC208351

### PREB (NM\_013388) Human Tagged ORF Clone

#### Product data:

Product Type:	Expression Plasmids
Product Name:	PREB (NM_013388) Human Tagged ORF Clone
Tag:	Myc-DDK
Symbol:	PREB
Synonyms:	SEC12
Mammalian Cell Selection:	Neomycin
Vector:	pCMV6-Entry (PS100001)
E. coli Selection:	Kanamycin (25 ug/mL)
ORF Nucleotide Sequence:	>RC208351 ORF sequence Red=Cloning site Blue=ORF Green=Tags(s)

TTTTGTAATACGACTCACTATAGGGCGGCCGGAATTCGTCGACTGGATCCGGTACCGAGGAGATCTGCC  
GCC**CGATCGCC**

ATGGGCCGGCGCCGGGCCAGAGCTGTACCGGGCTCCGTTCCCGTTGTACGCGCTTCAGGTCGACCCCA  
GCACTGGGCTGCTCATCGCTGCGGGCGGAGGAGGCCGCCAAGACAGGCATAAAGAATGGCGTGCACTT  
TCTGCAGCTAGAGCTGATTAATGGGCGCTTGAGTGCCTCCTTGCTGCACTCCCATGACACAGAGACCGG  
GCCACCATGAACCTGGCACTGGTGGTACATCCTTGCTGCAGGGCAGGATGCCACTGTCAGCTCCTGC  
GCTTCCAGGCACATCAACAGCAGGGCAACAAGGCAGAGAAGGCCGGTTCCAAGGAGCAGGGGCCCTCGACA  
AAGGAAGGGAGCAGCCCCAGCAGAGAAGAAATGTGGAGCGGAAACCCAGCAGGAGGGCTAGAACTCAGG  
GTAGAGAATTTGCAGGCGGTGCAGACAGACTTTAGCTCCGATCCACTGCAGAAAGTTGTGTGCTTCAACC  
ACGATAATACCCTGCTTGCCACTGGAGGAACAGATGGCTACGTCCGTGTCTGGAAGGTGCCAGCCTGGA  
GAAGGTTCTGGAGTTCAAAGCCCACGAAGGGGAGATTGAAGACCTGGCTTTAGGGCCTGATGGCAAGTTG  
GTAACCGTGGGCCGGACCTTAAGGCCTCTGTGTGGCAGAAGGATCAGCTGGTGACACAGCTGCACTGGC  
AAGAAAATGGACCCACCTTTCCAGCACACCTTACCGCTACCAGGCTGCAGGTTTGGGCAGGTTCCAGA  
CCAGCCTGCTGGCCTGCGACTCTTACAGTGCAAATCCCCACAAGCGCCTGCCAGCCCCCTCCCTGC  
TACCTCACAGCCTGGGATGGCTCCAACCTTTGCCCTTCGGACCAAGTCTGTGGCCATGAAGTCGTCT  
CCTGCCTCGATGTCAGTGAATCCGGCACCTTCTAGGCCTGGGCACAGTCACTGGCTCTGTTGCCATCTA  
CATAGCTTTCTCTCCAGTGCCTCTACTACGTGAGGGAGGCCCATGGCATTGTGGTGACGGATGTGGCC  
TTTCTACCTGAGAAGGTCGTGGTCCAGAGCTCCTTGGGTCATGAACTGCCCTGTTCTCTGTGGCTG  
TGGACAGTCGTTGCCAGCTGCATCTGTTGCCCTCACGGCGGAGTGTTCCTGTGTGGCTCCTGCTCCTGCT  
GTGTGTCGGGCTTATTATTGTGACCATCCTGCTGCTCCAGAGTGCCTTCCAGGTTTCCTT

**ACGCGT**ACGCGGCCGCTCGAGCAGAAACTCATCTCAGAAGAGGATCTGGCAGCAAATGATATCCTGGATT  
ACAAGGATGACGACGATAAGGTTTAA



[View online >](#)

**Protein Sequence:** >RC208351 protein sequence  
 Red=Cloning site Green=Tags(s)

MGRRRAPELYRAPFPLYALQVDPSTGLLIAAGGGGAAKTGIKNGVHFLQLELINGRLSASLLHSHDTETR  
 ATMNLALAGDILAAGQDAHCQLLRFQAHQQGNKAEKAGSKEQGPRQRKGAAPAEKKCGAETQHEGLELR  
 VENLQAVQTDFFSSDPLQKVVCFNHDNTLLATGGTDGYVRVWVPSLEKVFKAHEGEIEDLALGPDGKL  
 VTVGRDLKASVWQKDQLVTQLHWQENGPFSSTPYRYQACRFQVDPQAPAGLRLFTVQIPHKRLRQPPPC  
 YLTAWDGNSNFLPLRTKSCGHEVVSCLDVSESGTFLGLGTVTGSAVIYIAFSLQCLYYVREAHGIVVTDVA  
 FLPEKGRGPELLGSHETALFSVAVDSRCQLHLLPSRRSVPVWLLLLLVCVGLIIVTILLLLQSAPFGFL

TRTRPLEQKLISEEDLAANDILDYKDDDDKV

**Chromatograms:** [https://cdn.origene.com/chromatograms/mk6149\\_b01.zip](https://cdn.origene.com/chromatograms/mk6149_b01.zip)

**Restriction Sites:** SgfI-MluI

**Cloning Scheme:**



**ACCN:** NM\_013388

**ORF Size:** 1251 bp

**OTI Disclaimer:** The molecular sequence of this clone aligns with the gene accession number as a point of reference only. However, individual transcript sequences of the same gene can differ through naturally occurring variations (e.g. polymorphisms), each with its own valid existence. This clone is substantially in agreement with the reference, but a complete review of all prevailing variants is recommended prior to use. [More info](#)

**OTI Annotation:** This clone was engineered to express the complete ORF with an expression tag. Expression varies depending on the nature of the gene.

**Components:** The ORF clone is ion-exchange column purified and shipped in a 2D barcoded Matrix tube containing 10ug of transfection-ready, dried plasmid DNA (reconstitute with 100 ul of water).

**Reconstitution Method:**

1. Centrifuge at 5,000xg for 5min.
2. Carefully open the tube and add 100ul of sterile water to dissolve the DNA.
3. Close the tube and incubate for 10 minutes at room temperature.
4. Briefly vortex the tube and then do a quick spin (less than 5000xg) to concentrate the liquid at the bottom.
5. Store the suspended plasmid at -20°C. The DNA is stable for at least one year from date of shipping when stored at -20°C.

**RefSeq:** [NM\\_013388.6](#)

**RefSeq Size:** 2211 bp

**RefSeq ORF:** 1254 bp

**Locus ID:** 10113

**UniProt ID:** [Q9HCU5](#)

**Cytogenetics:** 2p23.3

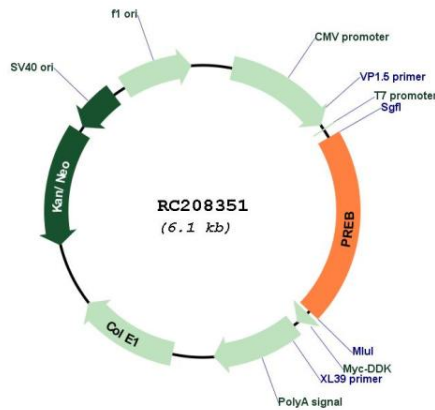
**Domains:** WD40

**Protein Families:** Transcription Factors, Transmembrane

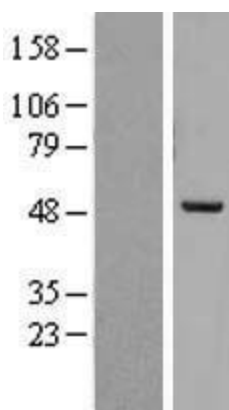
**MW:** 45.5 kDa

**Gene Summary:** This gene encodes a protein that specifically binds to a Pit1-binding element of the prolactin (PRL) promoter. This protein may act as a transcriptional regulator and is thought to be involved in some of the developmental abnormalities observed in patients with partial trisomy 2p. This gene overlaps the abhydrolase domain containing 1 (ABHD1) gene on the opposite strand. [provided by RefSeq, Jul 2008]

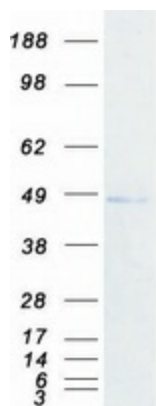
**Product images:**



Circular map for RC208351



Western blot validation of overexpression lysate (Cat# [LY402254]) using anti-DDK antibody (Cat# [TA50011-100]). Left: Cell lysates from untransfected HEK293T cells; Right: Cell lysates from HEK293T cells transfected with RC208351 using transfection reagent MegaTran 2.0 (Cat# [TT210002]).



Coomassie blue staining of purified PREB protein (Cat# [TP308351]). The protein was produced from HEK293T cells transfected with PREB cDNA clone (Cat# RC208351) using MegaTran 2.0 (Cat# [TT210002]).