

Product datasheet for RC208342

Alpha 1 microglobulin (AMBP) (NM_001633) Human Tagged ORF Clone

Product data:

Product Type:	Expression Plasmids
Product Name:	Alpha 1 microglobulin (AMBP) (NM_001633) Human Tagged ORF Clone
Tag:	Myc-DDK
Symbol:	Alpha 1 microglobulin
Synonyms:	A1M; EDC1; HCP; HI30; IATIL; ITI; ITIL; ITILC; UTI
Mammalian Cell Selection:	Neomycin
Vector:	pCMV6-Entry (PS100001)
E. coli Selection:	Kanamycin (25 ug/mL)
ORF Nucleotide Sequence:	>RC208342 ORF sequence Red=Cloning site Blue=ORF Green=Tags(s)

TTTTGTAATACGACTCACTATAGGGCGGCCGGAATTCGTCGACTGGATCCGGTACCGAGGAGATCTGCC
GCC**CGATCGCC**

ATGAGGAGCCTCGGGCCCTGCTCTTGCTGCTGAGCGCCTGCCTGGCGGTGAGCGCTGGCCCTGTGCCAA
CGCCGCCGACAACATCCAAGTGCAGGAAACTTCAATATCTCTCGGATCTATGGAAAGTGTACAACCT
GGCCATCGGTTCCACCTGCCCTGGCTGAAGAAGATCATGGACAGGATGACAGTGAGCACGCTGGTGTCTG
GGAGAGGGCGCTACAGAGGGGAGATCAGCATGACCAGCACTCGTTGGCGAAAGGTGTCTGTGAGGAGA
CGTCTGGAGCTTATGAGAAAACAGATACTGATGGGAAGTTTCTCTATCACAAATCCAATGGAACATAAC
CATGGAGTCCATGTGGTCCACACCAACTATGATGAGTATGCCATTTTCCCTGACCAAGAAATTCAGCCGC
CATCATGGACCCACCATTAAGCTCTACGGGCGGGCGCCGAGCTGAGGAAACTCTCTGCAGG
ACTTCAGAGTGGTTGCCAGGGTGTGGGCATCCCTGAGGACTCCATCTTCACCATGGCTGACCGAGGTGA
ATGTGTCCCTGGGGAGCAGGAACCAGAGCCCATCTTAATCCCAGAGTCCGGAGGGCTGTGTACCCCAA
GAAGAGGAAGGATCAGGGGGTGGCAACTGGTAACTGAAGTACCAAGAAAGAAGATTCTGCCAGCTGG
GCTACTCGGCCGGTCCCTGCATGGGAATGACCAGCAGTATTTCTATAATGGTACATCCATGGCCTGTGA
GACTTTCCAGTACGGCGGCTGCATGGGCAACGGTAACTTTCGTCACAGAAAAGGAGTGTCTGCAGACC
TGCCGAAGTGTGGCGCCCTGCAATCTCCCATAGTCCGGGGCCCTGCCGAGCTTCATCCAGCTCTGGG
CATTTGATGCTGTCAAGGGGAAGTGCCTCTTCCCCTACGGGGCTGCCAGGGCAACGGGAACAAGTT
CTACTCAGAGAAGGAGTGACAGAGTACTGCGGTGTCCCTGGTGTGGTATGAGGAGCTGCTGCGCTTC
TCCAAC

ACGCGTACGCGGCCGCTCGAGCAGAAACTCATCTCAGAAGAGGATCTGGCAGCAAATGATATCCTGGATT
ACAAGGATGACGACGATAAGGTTTAA



[View online »](#)

Protein Sequence: >RC208342 protein sequence
Red=Cloning site Green=Tags(s)

M R S L G A L L L L L S A C L A V S A G P V P T P P D N I Q V Q E N F N I S R I Y G K W Y N L A I G S T C P W L K K I M D R M T V S T L V L
 G E G A T E A E I S M T S T R W R K G V C E E T S G A Y E K T D T D G K F L Y H K S K W N I T M E S Y V V H T N Y D E Y A I F L T K K F S R
 H H G P T I T A K L Y G R A P Q L R E T L L Q D F R V V A Q G V G I P E D S I F T M A D R G E C V P G E Q E P E P I L I P R V R R A V L P Q
 E E E G S G G G Q L V T E V T K K E D S C Q L G Y S A G P C M G M T S R Y F Y N G T S M A C E T F Q Y G G C M G N G N N F V T E K E C L Q T
 C R T V A A C N L P I V R G P C R A F I Q L W A F D A V K G K C V L F P Y G G C Q G N G N K F Y S E K E C R E Y C G V P G D G D E E L L R F
 S N

TRTRPLEQKLISEEDLAANDILDYKDDDDKV

Chromatograms: https://cdn.origene.com/chromatograms/mk6127_a04.zip

Restriction Sites: SgfI-MluI

Cloning Scheme:



ACCN: NM_001633

ORF Size: 1056 bp

OTI Disclaimer: The molecular sequence of this clone aligns with the gene accession number as a point of reference only. However, individual transcript sequences of the same gene can differ through naturally occurring variations (e.g. polymorphisms), each with its own valid existence. This clone is substantially in agreement with the reference, but a complete review of all prevailing variants is recommended prior to use. [More info](#)

OTI Annotation: This clone was engineered to express the complete ORF with an expression tag. Expression varies depending on the nature of the gene.

Components: The ORF clone is ion-exchange column purified and shipped in a 2D barcoded Matrix tube containing 10ug of transfection-ready, dried plasmid DNA (reconstitute with 100 ul of water).

Reconstitution Method:

1. Centrifuge at 5,000xg for 5min.
2. Carefully open the tube and add 100ul of sterile water to dissolve the DNA.
3. Close the tube and incubate for 10 minutes at room temperature.
4. Briefly vortex the tube and then do a quick spin (less than 5000xg) to concentrate the liquid at the bottom.
5. Store the suspended plasmid at -20°C. The DNA is stable for at least one year from date of shipping when stored at -20°C.

RefSeq: [NM_001633.4](#)

RefSeq Size: 1450 bp

RefSeq ORF: 1059 bp

Locus ID: 259

UniProt ID: [P02760](#)

Cytogenetics: 9q32

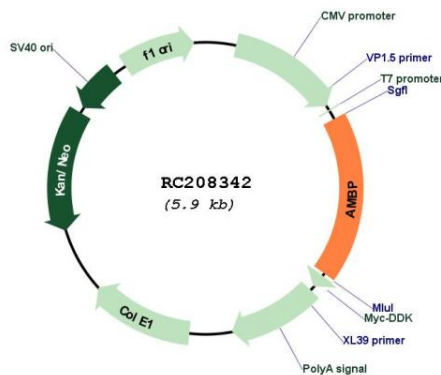
Domains: lipocalin, KU

Protein Families: Secreted Protein

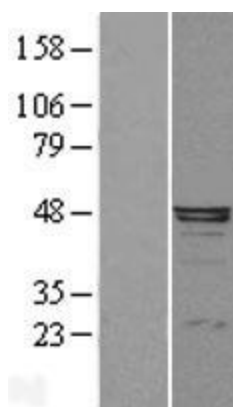
MW: 39 kDa

Gene Summary: This gene encodes a complex glycoprotein secreted in plasma. The precursor is proteolytically processed into distinct functioning proteins: alpha-1-microglobulin, which belongs to the superfamily of lipocalin transport proteins and may play a role in the regulation of inflammatory processes, and bikunin, which is a urinary trypsin inhibitor belonging to the superfamily of Kunitz-type protease inhibitors and plays an important role in many physiological and pathological processes. This gene is located on chromosome 9 in a cluster of lipocalin genes. [provided by RefSeq, Jul 2008]

Product images:



Circular map for RC208342



Western blot validation of overexpression lysate (Cat# [LY400613]) using anti-DDK antibody (Cat# [TA50011-100]). Left: Cell lysates from untransfected HEK293T cells; Right: Cell lysates from HEK293T cells transfected with RC208342 using transfection reagent MegaTran 2.0 (Cat# [TT210002]).



Coomassie blue staining of purified AMBP protein (Cat# [TP308342]). The protein was produced from HEK293T cells transfected with AMBP cDNA clone (Cat# RC208342) using MegaTran 2.0 (Cat# [TT210002]).