

## Product datasheet for **RC208340**

### PPP2R2A (NM\_002717) Human Tagged ORF Clone

#### Product data:

Product Type:	Expression Plasmids
Product Name:	PPP2R2A (NM_002717) Human Tagged ORF Clone
Tag:	Myc-DDK
Symbol:	PPP2R2A
Synonyms:	B55A; B55ALPHA; PR52A; PR55A; PR55alpha
Mammalian Cell Selection:	Neomycin
Vector:	pCMV6-Entry (PS100001)
E. coli Selection:	Kanamycin (25 ug/mL)



[View online »](#)

**ORF Nucleotide Sequence:**

>RC208340 ORF sequence  
 Red=Cloning site Blue=ORF Green=Tags(s)

TTTTGTAATACGACTCACTATAGGGCGGCCGGAATTCGTGACTGGATCCGGTACCGAGGAGATCTGCC  
 GCC**CGCATCGCC**

ATGGCAGGAGCTGGAGGAGGAATGATATTCAGTGGTGTTTTTCTCAGGTGAAAGGAGCAGTAGATGATG  
 ATGTAGCAGAAGCAGATATAATTTCTACAGTAGAATTTAATCATTCTGGAGAATTAAGCAACAGGAGA  
 TAAAGGTGGTAGAGTTGTCATCTTTCAACAGGAGCAGGAGAACAATAATCCAGTCTCATAGCAGAGGAGAA  
 TATAATGTTTACAGCACCTTCCAGAGCCATGAACCAGAGTTTGACTACTTGAAAAGTTTGTAGAAATAGAAG  
 AAAAGTCAACAATAATAGGTGGTTACCCAGAAAAATGCTGCTCAGTTTTTATTGTCTACCAATGATAA  
 AACATAAAATATGGAAAATCAGTGAAGGGACAAAAGACCAGAAGGTATAACTTGAAAGAGGAGGAT  
 GGAAGGTATAGAGATCCTACTACAGTTACTACACTACGAGTGCCAGTCTTAGGCCTATGGATCTAATGG  
 TTGAGGCCAGTCCACGAAGAATATTTGCCAATGCTCATAACATACATCAACTCAATTTCTATTAATAG  
 TGATTATGAAACATATTTATCTGCAGATGATTTGCGGATTAATCTTTGGCATCTGAAAATACAGACAGG  
 AGTTTTAACATTGTGGATATCAAGCCTGCCAATATGGAAGAGCTAACAGAGGTGATTACAGCAGCAGAAT  
 TTCATCCAAAACAGCTGTAAACACATTTGTATACAGCAGCAGTAAAGGAACTATTCGGCTATGTGACATGAG  
 GGCATCTGCCCTCTGTGATAGACATTCTAAATGTTTGAAGAACCTGAAGATCCCAGTAACAGGTCATTT  
 TTTTCCGAAATCATCTCCTCTATTTCCGGATGTAATAATTCAGCCATAGTGGTCGATATATGATGACTAGAG  
 ACTATTTGTGTCAGTCAAAAATTTGGGACTTAAATATGGAAAACAGGCCTGTGGAAACATACCAGGTGCATGA  
 ATACCTCAGAAGTAACTCTGTTCACTGTATGAAAATGACTGCATATTTGACAAAATTTGAATGTTGTTGG  
 AATGGATCTGACAGTGTGTCATGACTGGATCTTACAATAATTTCTTCAAGATGTTTGACAGAAACACAA  
 AGCGAGACATAACCCTAGAAGCATCGCGGAAAAACAATAAGCCTCGCACAGTTCTGAAGCCTCGCAAGAT  
 CTGTGCAAGTGGCAAGCGAAAGAAAGATGAAATAAGTGTGACAGCCTAGACTTCAATAAGAAAATCCTT  
 CACACAGCCTGGCACCCCAAGGAAAATATCATTGCCGTAGCTACTACAAACAATCTGTATATATTTCAAG  
 ACAAAGTGAAT

**ACGCGT**ACGCGGCCGCTCGAGCAGAACTCATCTCAGAAGAGGATCTGGCAGCAAATGATATCCTGGATT  
 ACAAGGATGACGACGATAAGGTTTAA

**Protein Sequence:**

>RC208340 protein sequence  
 Red=Cloning site Green=Tags(s)

MAGAGGGNDIQWCFSSQVKGAVDDDDVAEADIISTVEFNHSGELLATGDKGGRVVIFQQEQENKIQSHSRGE  
 YNVYSTFQSHEPEFDYLSLEIEEKINKIRWLPQKNAAQFLLSTNDKTIKLWKISERDKRPEGYNLKEED  
 GRYRDPPTVTTLRVPVFRPMDLMVEASPRRIFANAHTYHINSISINSYETYL SADDLRINLWHEITDR  
 SFNIVDIK PANMEELTEVITAAEFHPNSCNTFVYSSSKGTIRLCDMRASALCDRHSKLFEEPEDPSNRSF  
 FSEIISSISDVKFSHSGRYMMTRDYL SVKIWDLNMENRPVETYQVHEYLRSKLSLYENDCIFDKFECCW  
 NGSDSVVM TGSYNNFFRMFDRNTRKRDITLEASRENNKPRTVLKPRKVCASGKRKKDEISVDSLDFNKKIL  
 HTAWHPKENIIAVATTNNLYIFQDKVN

**TR**TRPLEQKLISEEDLAANDILDYKDDDDKV

**Chromatograms:**

[https://cdn.origene.com/chromatograms/mk6125\\_a06.zip](https://cdn.origene.com/chromatograms/mk6125_a06.zip)

**Restriction Sites:**

Sgfl-Mlul

**Cloning Scheme:**


**ACCN:** NM\_002717

**ORF Size:** 1344 bp

**OTI Disclaimer:** The molecular sequence of this clone aligns with the gene accession number as a point of reference only. However, individual transcript sequences of the same gene can differ through naturally occurring variations (e.g. polymorphisms), each with its own valid existence. This clone is substantially in agreement with the reference, but a complete review of all prevailing variants is recommended prior to use. [More info](#)

**OTI Annotation:** This clone was engineered to express the complete ORF with an expression tag. Expression varies depending on the nature of the gene.

**Components:** The ORF clone is ion-exchange column purified and shipped in a 2D barcoded Matrix tube containing 10ug of transfection-ready, dried plasmid DNA (reconstitute with 100 ul of water).

- Reconstitution Method:**
1. Centrifuge at 5,000xg for 5min.
  2. Carefully open the tube and add 100ul of sterile water to dissolve the DNA.
  3. Close the tube and incubate for 10 minutes at room temperature.
  4. Briefly vortex the tube and then do a quick spin (less than 5000xg) to concentrate the liquid at the bottom.
  5. Store the suspended plasmid at -20°C. The DNA is stable for at least one year from date of shipping when stored at -20°C.

**RefSeq:** [NM\\_002717.4](#)

**RefSeq Size:** 3945 bp

**RefSeq ORF:** 1344 bp

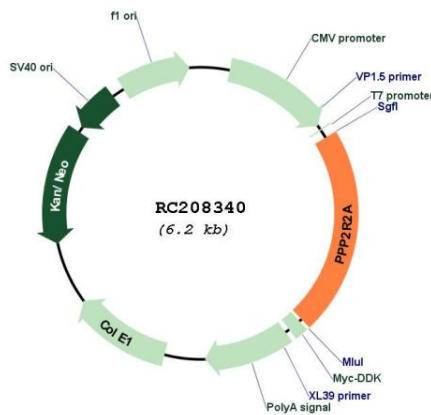
**Locus ID:** 5520

**UniProt ID:** [P63151](#)

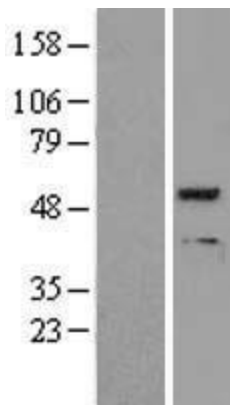
**Cytogenetics:** 8p21.2

<b>Domains:</b>	WD40
<b>Protein Families:</b>	Druggable Genome, Phosphatase
<b>Protein Pathways:</b>	Tight junction
<b>MW:</b>	51.7 kDa
<b>Gene Summary:</b>	The product of this gene belongs to the phosphatase 2 regulatory subunit B family. Protein phosphatase 2 is one of the four major Ser/Thr phosphatases, and it is implicated in the negative control of cell growth and division. It consists of a common heteromeric core enzyme, which is composed of a catalytic subunit and a constant regulatory subunit, that associates with a variety of regulatory subunits. The B regulatory subunit might modulate substrate selectivity and catalytic activity. This gene encodes an alpha isoform of the regulatory subunit B55 subfamily. Alternatively spliced transcript variants have been described. [provided by RefSeq, Apr 2010]

**Product images:**



Circular map for RC208340



Western blot validation of overexpression lysate (Cat# [LY400958]) using anti-DDK antibody (Cat# [TA50011-100]). Left: Cell lysates from untransfected HEK293T cells; Right: Cell lysates from HEK293T cells transfected with RC208340 using transfection reagent MegaTran 2.0 (Cat# [TT210002]).