

Product datasheet for **RC208339**

USF2 (NM_003367) Human Tagged ORF Clone

Product data:

Product Type:	Expression Plasmids
Product Name:	USF2 (NM_003367) Human Tagged ORF Clone
Tag:	Myc-DDK
Symbol:	USF2
Synonyms:	bHLHb12; FIP
Mammalian Cell Selection:	Neomycin
Vector:	pCMV6-Entry (PS100001)
E. coli Selection:	Kanamycin (25 ug/mL)
ORF Nucleotide Sequence:	>RC208339 ORF sequence Red=Cloning site Blue=ORF Green=Tags(s)

TTTTGTAATACGACTCACTATAGGGCGGCCGGAATTCGTCGACTGGATCCGGTACCGAGGAGATCTGCC
GCC**CGATCGCC**

ATGGACATGCTGGACCCGGTCTGGATCCCGCTGCCTCGGCCACCGCTGCTGCCGCCAGCCACGACA
AGGGACCCGAGGCGGAGGAGGGCGTCGAGCTGCAGGAAGGCGGGACGGCCAGGAGCGGAGGAGCAGAC
AGCGGTGGCCATCACCAGCGTCCAGCAGGCGGCGTTTCGGCGACCACAACATCCAGTACCAGTTCGCACA
GAGACAAATGGAGGACAGGTGACATACCGCGTAGTCCAGGTGACTGATGGTCAGCTGGACGGCCAGGGCG
ACACAGCTGGCGCCGTCAGCGTCGTGTCCACCGCTGCCTTCGCGGGGGGCGAGCAGGCTGTGACCCAGGT
GGGTGTGGACGGGCGAGCCAGCGCCCGGGCCCGCCGCTGCCTCTGTGCCCCAGGTCTGCAGCGCCC
TCCCCGCTGGCTGTGATCCAAAATCCCTTCAGCAATGGTGGCAGTCCGGCGGCGGAGGCTGTGACGGGG
AGGCACGATTTGCCTATTTCCAGCGTCCAGTGTGGGAGATACTACGGCTGTGTCCGTACAGACCACAGA
CCAGAGCTTGAGGCTGGAGGCCAGTTCTACGTATGATGACGCCCCAGGATGTGCTTCAGACAGGAACA
CAGAGGACGATCGCCCCCGGACACACCCTTACTCTCCAAAATTTGATGGAACAGAACACCCCGAGATG
AGAGGAGAAGAGCCAGCACAACGAAGTGGAGCGGAGGGGACAAGATCAACAACCTGGATCGTCCA
GCTTTTCGAAAATCATTCCAGACTGTAACGCAGACAACAGCAAGACGGGAGCGAGTAAAGGAGGGATCCTG
TCCAAGGCTGCGATTACATCCGGGAGTTGCGCCAGACCAACAGCGCATGCAGGAGACCTCAAAGAGG
CCGAGCGGCTGCAGATGGACAACGAGCTCCTGAGGCAGCAGATCGAGGAGCTGAAGAATGAGAACGCCCT
GCTTCGAGCCAGCTGCAGCAGCACAACCTGGAGATGGTGGGCGAGGGCACCCGGCAG

ACGCGTACGCGGCCGCTCGAGCAGAACTCATCTCAGAAGAGGATCTGGCAGCAATGATATCCTGGATT
ACAAGGATGACGACGATAAGGTTTAA



[View online »](#)

Protein Sequence: >RC208339 protein sequence
Red=Cloning site Green=Tags(s)

MDMLDPGLDPAASATAAAAAASHDKGPEAEEGVELQEGGDGPGAEETAVAITSVQQAAGFDHNIQYQFRT
 ETNGGQVTYRVVQVTDGQLDGQDGTAGAVSVVSTAAFAGGQAVTQVGVGAAQRPGPAAASVPPGPAAP
 FPLAVIQNPF SNGGSPAEEAVSGEARFAYFPASSVGDTTAVSVQTTDQSLQAGGQFYVMMPQDVLQTGT
 QRTIAPRTHPYSPKIDGTRTPRDERRRAQHNEVERRRRDKINNWI VQLSKIIPDCNADNSKTGASKGGIL
 SKACDYIRELRQTNQRMQETFKEAERLQMDNELLRQQIEELKNENALLRAQLQQHNLEMVGEGTRQ

TRTRPLEQKLISEEDLAANDILDYKDDDDKV

Chromatograms: https://cdn.origene.com/chromatograms/mk6149_e10.zip

Restriction Sites: SgfI-MluI

Cloning Scheme:



ACCN: NM_003367

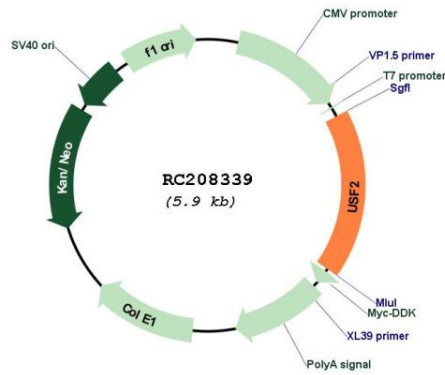
ORF Size: 1038 bp

OTI Disclaimer: Due to the inherent nature of this plasmid, standard methods to replicate additional amounts of DNA in E. coli are highly likely to result in mutations and/or rearrangements. Therefore, OriGene does not guarantee the capability to replicate this plasmid DNA. Additional amounts of DNA can be purchased from OriGene with batch-specific, full-sequence verification at a reduced cost. Please contact our customer care team at custsupport@origene.com or by calling 301.340.3188 option 3 for pricing and delivery.

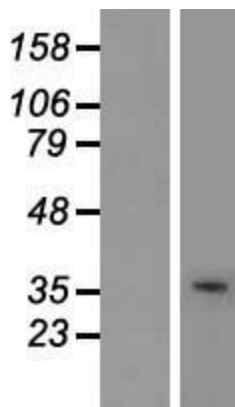
The molecular sequence of this clone aligns with the gene accession number as a point of reference only. However, individual transcript sequences of the same gene can differ through naturally occurring variations (e.g. polymorphisms), each with its own valid existence. This clone is substantially in agreement with the reference, but a complete review of all prevailing variants is recommended prior to use. [More info](#)

OTI Annotation:	This clone was engineered to express the complete ORF with an expression tag. Expression varies depending on the nature of the gene.
Components:	The ORF clone is ion-exchange column purified and shipped in a 2D barcoded Matrix tube containing 10ug of transfection-ready, dried plasmid DNA (reconstitute with 100 ul of water).
Reconstitution Method:	<ol style="list-style-type: none">1. Centrifuge at 5,000xg for 5min.2. Carefully open the tube and add 100ul of sterile water to dissolve the DNA.3. Close the tube and incubate for 10 minutes at room temperature.4. Briefly vortex the tube and then do a quick spin (less than 5000xg) to concentrate the liquid at the bottom.5. Store the suspended plasmid at -20°C. The DNA is stable for at least one year from date of shipping when stored at -20°C.
RefSeq:	NM_003367.4
RefSeq Size:	1732 bp
RefSeq ORF:	1041 bp
Locus ID:	7392
UniProt ID:	Q15853
Cytogenetics:	19q13.12
Domains:	HLH
Protein Families:	Druggable Genome, Transcription Factors
MW:	37 kDa
Gene Summary:	This gene encodes a member of the basic helix-loop-helix leucine zipper family of transcription factors. The encoded protein can activate transcription through pyrimidine-rich initiator (Inr) elements and E-box motifs and is involved in regulating multiple cellular processes. [provided by RefSeq, Mar 2016]

Product images:



Circular map for RC208339



Western blot validation of overexpression lysate (Cat# [LY418723]) using anti-DDK antibody (Cat# [TA50011-100]). Left: Cell lysates from untransfected HEK293T cells; Right: Cell lysates from HEK293T cells transfected with RC208339 using transfection reagent MegaTran 2.0 (Cat# [TT210002]).