

Product datasheet for **RC208337**

DUSP8 (NM_004420) Human Tagged ORF Clone

Product data:

Product Type:	Expression Plasmids
Product Name:	DUSP8 (NM_004420) Human Tagged ORF Clone
Tag:	Myc-DDK
Symbol:	DUSP8
Synonyms:	C11orf81; HB5; HVH-5; HVH8
Mammalian Cell Selection:	Neomycin
Vector:	pCMV6-Entry (PS100001)
E. coli Selection:	Kanamycin (25 ug/mL)



[View online »](#)

ORF Nucleotide Sequence:

>RC208337 representing NM_004420
 Red=Cloning site Blue=ORF Green=Tags(s)

TTTTGTAATACGACTCACTATAGGGCGGCCGGAATTCGTGACTGGATCCGGTACCGAGGAGATCTGCC
 GCC**CGGATCGCC**

ATGGCTGGGGACCGCTCCCGAGGAAGGTGATGGATGCCAAGAAGCTGGCCAGCCTGCTGCGGGGCGGGC
 CTGGGGGGCCGCTGGTCATCGACAGCCGCTCCTTCGTGGAGTACAACAGCTGGCATGTGCTCAGCTCCGT
 CAACATCTGCTGCTCCAAGCTGGTGAAGCGGCGCTGCAGCAGGGCAAGGTGACCATTGCGGAGCTCATC
 CAGCCGGCTGCACGCAGCCAGGTGGAGGCTACGGAGCCACAGGACGTGGTGGTCTATGACCAGAGCACGC
 GGGACGCCAGCGTCTGGCCGACAGAGCTTCTCTCCATCCTGCTGAGCAAGCTGGACGGCTGCTTCGA
 CAGCGTGGCCATCCTCACTGGGGGCTTCGCCACCTTCTCTCTGCTTCCCCGGCCTCTGCGAGGGCAAG
 CCTGCTGCCCTGTACCCATGAGCCTCTCCAGCCCTGCCTGCCTGTGCCAGCGTGGGCTCACCCGCA
 TCCTGCCTCACCTCTACCTGGGCTCGCAGAAGGACGTCTAAACAAGGATCTGATGACGCAAATGGAAT
 AAGCTACGTCCTCAACGCCAGCAACTCCTGCCCAAGCCTGACTTCATCTGCGAGAGCCGCTTCATGCGG
 GTCCCATCAACGACAACACTGTGAAAACTGCTGCCCTGGCTGGACAAGTCCATCGAGTTCATCGATA
 AAGCCAAGCTCTCCAGCTGCCAAGTCATCGTCCACTGTCTGGCTGGCATCTCCCGCTCTGCCACCATCGC
 CATCGCTACATCATGAAGACCATGGGCATGTCCTCCGACGACGCCTACAGGTTTCGTGAAGGACAGGCGC
 CCGTCCATCTCGCCCAACTTCAACTTCTGGGCCAGCTGCTGGAGTACGAGCGCAGCCTGAAGTCTGTG
 CCGCCCTGCAGGGCGACCCGGCACCCCTCAGGGACGCCGGAGCCTCCGCCAGTCTGCCCGCGGGG
 CCCGCTGCCACGGCTGCCACCACCTACCTCAGAGAGCGCTGCCACAGGGAATGCGGCTGCCAGGGAGGGC
 GGCTGAGCGCGGGCGGGGAGCCCCCGCGCCCCACGCCCGGGCACCAGCGCACTGCAGCAGGGCC
 TGCGCGGCTGCACCTCTCTCGGACCGCTGCAGGACACTAACCGCTCAAGCGTCTCTCTCCCTGGA
 CATCAAGTCTGCCTACGCCCTAGCAGGCGGCCGACGGCCCCGGGCCCCCCGACCCCGGCGAGGCCCG
 AAGCTCTGCAAGCTGGACAGCCGTCGGGGCCGCGCTGGGCTGTCTCGCCCAGCCGGACAGCCCGG
 ACGCCGCGCTGAGGCGCGCCACGGCCCCCGCGGCGGCCCGGCCCGCCCGGCTCCCCGCGCGCTC
 CCCCAGCACAGCCTCGGCTGAACCTCGGCGATGCGGCCGGCAGACTCCGCGGCAGGCTCTCGGCC
 CTGTGCGCGCCCGGGCTGCCCGGCTGGCCAGCCGGCCCGGCCCGGGGCTGGGACCGCGCTCGACT
 CCCCAGGCAGCCGTCGCCCAGCGGCCCTGGTCTTACGCCCGAGGGCGCACAGGGGGCGGGCGGGT
 GCTGTTTTCGCCCTTCGGCCGGGCGGGCCCGGGACCAGGCGCGGCAGCGACTGCGCGCGCGGGAG
 GCAGCGAGGGCTGAGCCCGGACGCGCGGACCGGCTGGCCCAGGAGCCGGCCCGGAGACGAGTTCA
 AGCGCCGAGCTGCCAGATGGAGTTCGAGGAGGCGATGGTGGAGGGGCGCGCGCGGCGAGGAGCTGGC
 CGCCCTGGGAAGCAGGCGAGCTTCTCGGGCAGCGTGGAGGTCATCGAGGTGTC

ACGCGTACGCGGCCGCTCGAGCAGAACTCATCTCAGAAGAGGATCTGGCAGCAAATGATATCCTGGATT
 ACAAGGATGACGACGATAAGGTTTAA

Protein Sequence:

>RC208337 representing NM_004420
 Red=Cloning site Green=Tags(s)

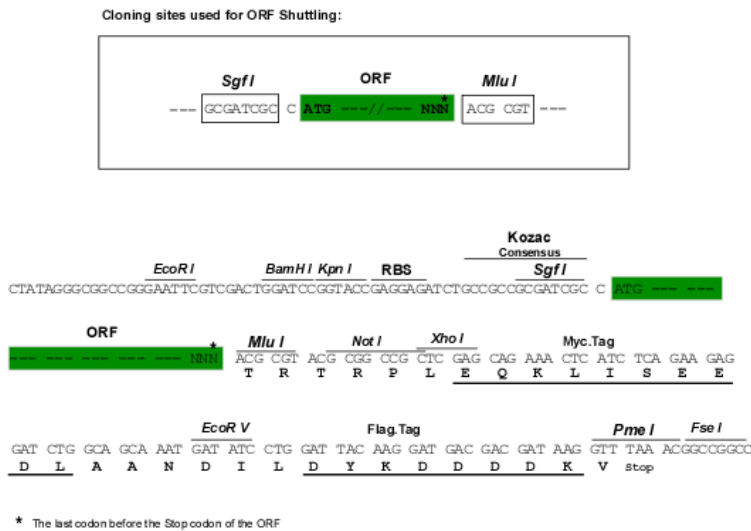
MAGDRLPRKVMADAKKLASLLRGGPGGPLVIDSRSFVEYNSWHVLSVNIICCSKLVKRRLLQQKVTIAELI
 QPAARSQVEATEPQDVVYDQSTRDASVLAADSFLSILLSKLDGCFDSVAILTGGFATFSSCFPLGCEGK
 PAALLPMSLSQPCLPVPSVGLTRILPHLYLGSQKDVLNKDLMTQNGISYVLNASNSCPKPDFICESRFMR
 VPINDNYCEKLLPWLDKSIEFIDKAKLSSCQVIHCLAGISRSATIAIAYIMKTMGMSDDAYRFVKDRR
 PSISPNFNFLGQLLEYERSLKLALQGDPTSGTPEPPPPSPAAGAPLPRLPPTSESAATGNAAAREG
 GLSAGGEPAPPTPPATSALQQGLRGLHLSSDRLQDTNRLKRSFSLDIKSAYAPRRPDGPGPPDGEAP
 KLCKLDSPSGAALGLSSPSPDPAAPPEARPRRRRPPAGSPARSPAHSLGLNFGDAARQTPRHLSA
 LSAPGLPGGQPAGGAWAPPLDSPGTPSPDGPWCFSPGAQAGGVLFAPFGRAGAPGPGGSDLRRRE
 AARAEPDARTGWPEEPAPETQFKRRSCQMEFEEMVVEGRARGEELAALGKQASFSGSVEVIEVS

TRTRPLEQKLISEEDLAANDILDYKDDDDKV

Chromatograms: https://cdn.origene.com/chromatograms/mg4291_c07.zip

Restriction Sites: SgfI-MluI

Cloning Scheme:



ACCN: NM_004420

ORF Size: 1875 bp

OTI Disclaimer: Due to the inherent nature of this plasmid, standard methods to replicate additional amounts of DNA in E. coli are highly likely to result in mutations and/or rearrangements. Therefore, OriGene does not guarantee the capability to replicate this plasmid DNA. Additional amounts of DNA can be purchased from OriGene with batch-specific, full-sequence verification at a reduced cost. Please contact our customer care team at custsupport@origene.com or by calling 301.340.3188 option 3 for pricing and delivery.

The molecular sequence of this clone aligns with the gene accession number as a point of reference only. However, individual transcript sequences of the same gene can differ through naturally occurring variations (e.g. polymorphisms), each with its own valid existence. This clone is substantially in agreement with the reference, but a complete review of all prevailing variants is recommended prior to use. [More info](#)

OTI Annotation: This clone was engineered to express the complete ORF with an expression tag. Expression varies depending on the nature of the gene.

Components: The ORF clone is ion-exchange column purified and shipped in a 2D barcoded Matrix tube containing 10ug of transfection-ready, dried plasmid DNA (reconstitute with 100 ul of water).

Reconstitution Method:

1. Centrifuge at 5,000xg for 5min.
2. Carefully open the tube and add 100ul of sterile water to dissolve the DNA.
3. Close the tube and incubate for 10 minutes at room temperature.
4. Briefly vortex the tube and then do a quick spin (less than 5000xg) to concentrate the liquid at the bottom.
5. Store the suspended plasmid at -20°C. The DNA is stable for at least one year from date of shipping when stored at -20°C.

RefSeq: [NM_004420.3](#)

RefSeq Size: 2377 bp

RefSeq ORF: 1878 bp

Locus ID: 1850

UniProt ID: [Q13202](#)

Cytogenetics: 11p15.5

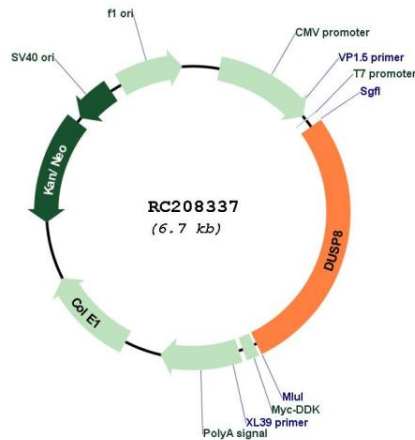
Protein Families: Druggable Genome, Phosphatase

Protein Pathways: MAPK signaling pathway

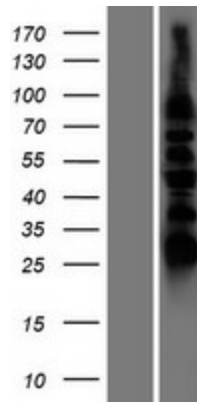
MW: 65.6 kDa

Gene Summary: The protein encoded by this gene is a member of the dual specificity protein phosphatase subfamily. These phosphatases inactivate their target kinases by dephosphorylating both the phosphoserine/threonine and phosphotyrosine residues. They negatively regulate members of the mitogen-activated protein (MAP) kinase superfamily (MAPK/ERK, SAPK/JNK, p38), which is associated with cellular proliferation and differentiation. Different members of the family of dual specificity phosphatases show distinct substrate specificities for various MAP kinases, different tissue distribution and subcellular localization, and different modes of inducibility of their expression by extracellular stimuli. This gene product inactivates SAPK/JNK and p38, is expressed predominantly in the adult brain, heart, and skeletal muscle, is localized in the cytoplasm, and is induced by nerve growth factor and insulin. An intronless pseudogene for DUSP8 is present on chromosome 10q11.2. [provided by RefSeq, Jul 2008]

Product images:



Circular map for RC208337



Western blot validation of overexpression lysate (Cat# [LY417999]) using anti-DDK antibody (Cat# [TA50011-100]). Left: Cell lysates from untransfected HEK293T cells; Right: Cell lysates from HEK293T cells transfected with RC208337 using transfection reagent MegaTran 2.0 (Cat# [TT210002]).