

## Product datasheet for **RC208335**

### Ninjurin 1 (NINJ1) (NM\_004148) Human Tagged ORF Clone

#### Product data:

Product Type:	Expression Plasmids
Product Name:	Ninjurin 1 (NINJ1) (NM_004148) Human Tagged ORF Clone
Tag:	Myc-DDK
Symbol:	Ninjurin 1
Synonyms:	NIN1; NINJURIN
Mammalian Cell Selection:	Neomycin
Vector:	pCMV6-Entry (PS100001)
E. coli Selection:	Kanamycin (25 ug/mL)
ORF Nucleotide Sequence:	>RC208335 representing NM_004148. Blue=ORF Red=Cloning site Green=Tag(s)

```
GCTCGTTTGTAGTGAACCGTCAGAATTTTGTAAACGACTACTATAGGGCGCCGGGAATTCGTGACTG
GATCCGGTACCGAGGAGATCTGCCGCCGCGATCGCC
ATGGACTCGGGAACCGAGGAGTACGAGCTCAACGGCGGCCTGCCTCCGGGCACACCCGGCTCCCCGGAC
GCCTCGCCGGCCCGCTGGGGCTGGAGGCACGGGCCATCAACGTGAACATTACGCCAGCAAGAAGAGC
GCAGCCGAGAGCATGCTGGACATCGCGTGCTGATGGCCAACGCGTCCCAGCTGAAGGCCGTCGTGGAA
CAGGGCCCGAGTTCGCCTTCTATGTGCCCTGGTGGTCTCATCTCCATCTCCCTTGTGCTGCAGATC
GGCGTGGGGTGCTGCTCATCTTCTTGTCAAGTACGACCTTAACAACCCGGCCAAGCACGCCAAGCTG
GACTTCTCAACAACCTGGCCACGGCCCTGGTGTTCATCATCGTGGTAGTCAACATCTTCATCACGGCC
TTCGGGGTCCAGAAGCCCTTGATGGACATGGCACCCAGCAG
AGCGGACCGACGCGTACGCGGCCGCTCGAGCAGAACTCATCTCAGAAGAGGATCTGGCAGCAAATGAT
ATCCTGGATTACAAGGATGACGACGATAAGGTTTAA
```

Protein Sequence: >Peptide sequence encoded by RC208335  
Blue=ORF Red=Cloning site Green=Tag(s)

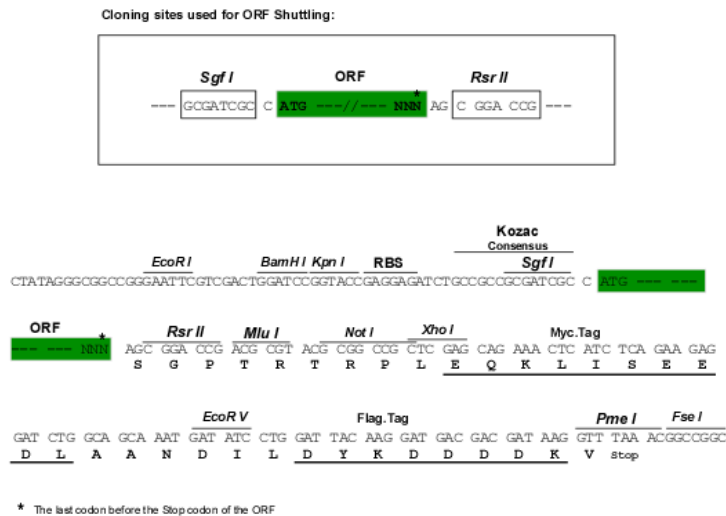
```
MDSGTEEYELNGLPPGTPGSPDASPARWGRHGPINVNHYASKKSAAESMLDIALLMANASQLKAVVE
QGPFSAFYVPLVVLISISLVLQIGVGVLLIFLVKYDLNPNPAKHAKLDFLNLATGLVFIIVVNFITIA
FGVQKPLMDMAPQQ
SGPTRRTRPLEQKLISEEDLAANDILDYKDDDDKV
```

Chromatograms: [https://cdn.origene.com/chromatograms/mg3649\\_f09.zip](https://cdn.origene.com/chromatograms/mg3649_f09.zip)

Restriction Sites: SgfI-RsrII



[View online »](#)

**Cloning Scheme:**


**ACCN:** NM\_004148

**ORF Size:** 456 bp

**OTI Disclaimer:** The molecular sequence of this clone aligns with the gene accession number as a point of reference only. However, individual transcript sequences of the same gene can differ through naturally occurring variations (e.g. polymorphisms), each with its own valid existence. This clone is substantially in agreement with the reference, but a complete review of all prevailing variants is recommended prior to use. [More info](#)

**OTI Annotation:** This clone was engineered to express the complete ORF with an expression tag. Expression varies depending on the nature of the gene.

**Components:** The ORF clone is ion-exchange column purified and shipped in a 2D barcoded Matrix tube containing 10ug of transfection-ready, dried plasmid DNA (reconstitute with 100 ul of water).

**Reconstitution Method:**

1. Centrifuge at 5,000xg for 5min.
2. Carefully open the tube and add 100ul of sterile water to dissolve the DNA.
3. Close the tube and incubate for 10 minutes at room temperature.
4. Briefly vortex the tube and then do a quick spin (less than 5000xg) to concentrate the liquid at the bottom.
5. Store the suspended plasmid at -20°C. The DNA is stable for at least one year from date of shipping when stored at -20°C.

**RefSeq:** [NM\\_004148.4](#)

**RefSeq Size:** 1309 bp

**RefSeq ORF:** 459 bp

**Locus ID:** 4814

UniProt ID: [Q92982](#)

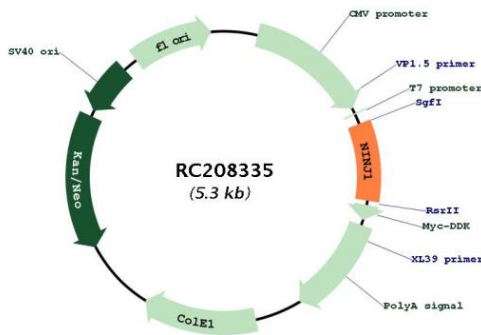
Cytogenetics: 9q22.31

Protein Families: Transmembrane

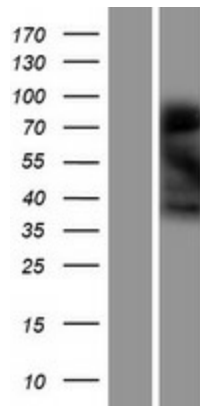
MW: 16.3 kDa

Gene Summary: The ninjurin protein is upregulated after nerve injury both in dorsal root ganglion neurons and in Schwann cells (Araki and Milbrandt, 1996 [PubMed 8780658]). It demonstrates properties of a homophilic adhesion molecule and promotes neurite outgrowth from primary cultured dorsal root ganglion neurons.[supplied by OMIM, Aug 2009]

**Product images:**



Circular map for RC208335



Western blot validation of overexpression lysate (Cat# [LY418178]) using anti-DDK antibody (Cat# [TA50011-100]). Left: Cell lysates from untransfected HEK293T cells; Right: Cell lysates from HEK293T cells transfected with RC208335 using transfection reagent MegaTran 2.0 (Cat# [TT210002]).