

Product datasheet for **RC208334**

Peptide YY (PYY) (NM_004160) Human Tagged ORF Clone

Product data:

Product Type: Expression Plasmids
Product Name: Peptide YY (PYY) (NM_004160) Human Tagged ORF Clone
Tag: Myc-DDK
Symbol: Peptide YY
Synonyms: PYY-I; PYY1
Mammalian Cell Selection: Neomycin
Vector: pCMV6-Entry (PS100001)
E. coli Selection: Kanamycin (25 ug/mL)
ORF Nucleotide Sequence: >RC208334 ORF sequence
Red=Cloning site Blue=ORF Green=Tags(s)

TTTTGTAATACGACTCACTATAGGGCGGCCGGAATTCGTCGACTGGATCCGGTACCGAGGAGATCTGCC
GCC**CGATCGCC**

ATGGTGTTCTGTCGCAGGCCGTGGCCCGCCTTGACCACAGTGCTTCTGGCCCTGCTCGTCTGCCTAGGGG
CGCTGGTCGACGCCTACCCCATCAAACCCGAGGCTCCCGCGAAGACGCCTCGCCGGAGGAGCTGAACCG
CTACTACGCCTCCCTGCCCACTACCTCAACCTGGTCACCGGCAGCGGTATGGGAAAAGAGACGGCCCG
GACAGGCTTCTTTCCAAAACGTTCTTCCCGACGGCGAGGACCGCCCGTCAGGTCGCGGTCGGAGGGCC
CAGACCTGTGG

ACGCGTACGCGGCCGCTCGAGCAGAAACTCATCTCAGAAGAGGATCTGGCAGCAAATGATATCCTGGATT
ACAAGGATGACGACGATAAGGTTTAA

Protein Sequence: >RC208334 protein sequence
Red=Cloning site Green=Tags(s)
MVFVRRPWPALTTVLLALLVCLGALVDAYPIKPEAPGEDASPEELNRYASLRHYLNLVTRQRYGKRDGP
DRLLSKTFFPDGEDRPVRSRSEGPLW

TRTRPLEQKLISEEDLAANDILDYKDDDDKV

Chromatograms: https://cdn.origene.com/chromatograms/mk6556_a07.zip

Restriction Sites: SgfI-MluI



[View online »](#)

Cloning Scheme:


ACCN: NM_004160

ORF Size: 291 bp

OTI Disclaimer: The molecular sequence of this clone aligns with the gene accession number as a point of reference only. However, individual transcript sequences of the same gene can differ through naturally occurring variations (e.g. polymorphisms), each with its own valid existence. This clone is substantially in agreement with the reference, but a complete review of all prevailing variants is recommended prior to use. [More info](#)

OTI Annotation: This clone was engineered to express the complete ORF with an expression tag. Expression varies depending on the nature of the gene.

Components: The ORF clone is ion-exchange column purified and shipped in a 2D barcoded Matrix tube containing 10ug of transfection-ready, dried plasmid DNA (reconstitute with 100 ul of water).

- Reconstitution Method:**
1. Centrifuge at 5,000xg for 5min.
 2. Carefully open the tube and add 100ul of sterile water to dissolve the DNA.
 3. Close the tube and incubate for 10 minutes at room temperature.
 4. Briefly vortex the tube and then do a quick spin (less than 5000xg) to concentrate the liquid at the bottom.
 5. Store the suspended plasmid at -20°C. The DNA is stable for at least one year from date of shipping when stored at -20°C.

RefSeq: [NM_004160.2](#)

RefSeq Size: 1069 bp

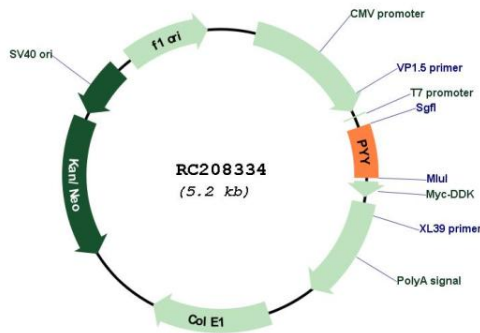
RefSeq ORF: 294 bp

Locus ID: 5697

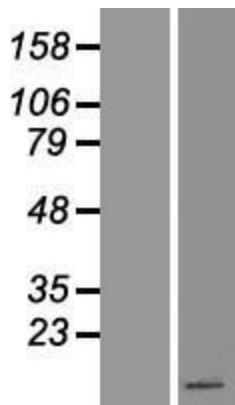
UniProt ID: [P10082](#)
 Cytogenetics: 17q21.31
 Protein Families: Secreted Protein, Transmembrane
 MW: 11.1 kDa

Gene Summary: This gene encodes a member of the neuropeptide Y (NPY) family of peptides. The encoded preproprotein is proteolytically processed to generate two alternative peptide products that differ in length by three amino acids. These peptides, secreted by endocrine cells in the gut, exhibit different binding affinities for each of the neuropeptide Y receptors. Binding of the encoded peptides to these receptors mediates regulation of pancreatic secretion, gut mobility and energy homeostasis. Rare variations in this gene could increase susceptibility to obesity and elevated serum levels of the encoded peptides may be associated with anorexia nervosa. [provided by RefSeq, Feb 2016]

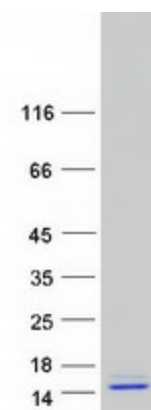
Product images:



Circular map for RC208334



Western blot validation of overexpression lysate (Cat# [LY418177]) using anti-DDK antibody (Cat# [TA50011-100]). Left: Cell lysates from untransfected HEK293T cells; Right: Cell lysates from HEK293T cells transfected with RC208334 using transfection reagent MegaTran 2.0 (Cat# [TT210002]).



Coomassie blue staining of purified PYY protein (Cat# [TP308334]). The protein was produced from HEK293T cells transfected with PYY cDNA clone (Cat# RC208334) using MegaTran 2.0 (Cat# [TT210002]).