

Product datasheet for **RC208333**

Semaphorin 3F (SEMA3F) (NM_004186) Human Tagged ORF Clone

Product data:

Product Type:	Expression Plasmids
Product Name:	Semaphorin 3F (SEMA3F) (NM_004186) Human Tagged ORF Clone
Tag:	Myc-DDK
Symbol:	Semaphorin 3F
Synonyms:	SEMA-IV; SEMA4; SEMAK
Mammalian Cell Selection:	Neomycin
Vector:	pCMV6-Entry (PS100001)
E. coli Selection:	Kanamycin (25 ug/mL)



[View online »](#)

ORF Nucleotide Sequence:

>RC208333 representing NM_004186
 Red=Cloning site Blue=ORF Green=Tags(s)

TTTTGTAATACGACTCACTATAGGGCGGCCGGGAATTCGTGACTGGATCCGGTACCGAGGAGATCTGCC
 GCC**GCGATCGCC**

ATGCTTGTGCGCCGTCTTCTTCTGCGCTTCCCTACTGACCGGGCCTGGCCATCCTTCCCCACCCAGG
 ACCACCTCCCGGCCACGCCCGGGTCCGGCTCTATTCAAAGAGCTGAAGGCCACAGGCACGCCCACTT
 CTTCAACTTCTGCTCAACACAACCGACTACCGAATCTTCTCAAGGACGAGGACCACGACCGCATGTAC
 GTGGGCAGCAAGGACTACGTGCTGTCCCTGGACCTGCACGACATCAACCGCGAGCCCTCATTATACACT
 GGGCAGCCTCCCCACAGCGCATCGAGGAATGCGTGTCTCAGGCAAGGATGTCAACGGCAGTGTGGAA
 CTTGTCAGGCTCATCCAGCCCTGGAACCGAACACACCTGTATGTGTGCGGGACAGGTGCCTACAACCCC
 ATGTGCACCTATGTGAACCGGGACGCCCGCCAGGCCACACCTGGACCCAGACTCAGGCGGTGACAG
 GCCCGGCAGCAGAGCCACGGATGGTGCCTCCGCCGATGCCACAGCCCCACGCCAGGATTACATCTT
 CTACCTGGAGCCTGAGCGACTCGAGTCAGGAAGGGCAAGTGTCCGTACGATCCCAAGCTGGACACAGCA
 TCGGCCCTCATCAATGAGGAGCTCTATGCTGGTGTGTACATCGATTTTATGGGCACTGATGACGCCATCT
 TCCGCACACTTGGAAAGCAGACGCCATGCGCACGGATCAGTACAACCTCCCGGTGGCTGAACGACCCGTC
 GTTCATCCATGCTGAGCTCATTCTGACAGTGGGAGCGCAATGATGATAAGCTTTACTTCTTCCGT
 GAGCGGTGCGCAGAGGCGCCGACAGCCCCGCGGTGTACGCCCGCATCGGGCGCATTTGCCTGAACGATG
 ACGGTGGTCACTGTTGCCTGGTCAACAAGTGGAGCACATTCCTGAAGGCGCGGCTCGTCTGCTGTCCC
 GGGCGAGGATGGCATTGAGACTCACTTTGATGAGTCCAGGACGTGTTTGTCCAGCAGACCCAGGACGTG
 AGGAACCTGTCAATACGCTGTCTTACCTCTGCTCCGTGTTCCGAGGCTCTGCCGTGTGTGTCT
 ACTCCATGGCTGATATTCGATGGTCTTCAACGGGCCCTTTGCCACAAAGAGGGGCCAACTACCAGTG
 GATGCCCTTCTCAGGGAAGATGCCCTACCCACGGCCGGCACGTGCCCTGGTGGAACTTACGCCATCT
 ATGAAGTCCACCAAGGATTATCCTGATGAGGTGATCAACTTCATGCGCAGCCACCCACTCATGTACCAGG
 CCGTGTACCCTCTGCAGCGCGGCCCTGGTAGTCCGCACAGGTGCTCCCTACCGCCTTACCCTATTGC
 CGTGGACCAGGTGGATGCAGCCGACGGGCGCTATGAGGTGCTTTTCTGGGCACAGACCGGGACAGTG
 CAGAAGGTCATTGTGCTGCCAAGGATGACCAGGAGATGGAGGAGCTCATGCTGGAGGAGTGGAGGTCT
 TCAAGGATCCAGCACCCGTCAAGACCATGACCATCTCTTCTAAGAGGCAACAACCTACGTGGCGTCAGC
 CGTGGGTGTACACACCTGAGCCTGCACCCTGCCAGGCGTATGGGGCTGCCTGTGCTGACTGCTGCCTT
 GCCCGGGACCCCTTACTGTGCTGGGATGGCCAGGCTGCTCCCGCTATACAGCATCTCCAAGAGGCGGA
 GCCCGCGCAGGACGTCCGGCACGAAACCCATCAGGCAGTGGCGTGGGTTCAACTCCAATGCCAACAA
 GAATGCCGTGGAGTCTGTGACATGAGCGTGGCCGGCAGCGCAGCCTTCCTTGAAGTGCAGCCCCGCTCG
 CCCAAGCCACTGTTAAGTGGCTGTTCCAGCGAGATCCTGGTGACCGGCGCCGAGAGATTCGTGACAGG
 ACCGCTTCTGCGCACAGAGCAGGGCTTGTGCTCCGTGCACTGCAGCTCAGCGATCGTGGCCTCTACTC
 CTGCACAGCCACTGAGAACAACTTTAAGCACGTGTCACACGAGTGCAGCTGCATGTACTGGGCCGGAC
 GCCGTCCATGCTGCCCTTCCACCCTGTCCATGAGCGCCCCGCCACCCCAAGGCGCAGGCCCCCAA
 CGCCTCCTTACCAGGAGTTAGCCAGCTGCTGGCCAGCCAGAAGTGGGCTCATCCACCAGTACTGCCA
 GGGTACTGGCGCCATGTGCCCCCAGCCCCAGGGAGGCTCCAGGGGCACCCCGTCTCTGAGCCCCAG
 GACCAGAAAAAGCCCCGAACCGCCGGCACCCCTCCGGACACA

ACGCGTACGCGGCCGCTCGAGCAGAACTCATCTCAGAAGAGGATCTGGCAGCAAATGATATCCTGGATT
 ACAAGGATGACGACGATAAGGTTTAA

Protein Sequence: >RC208333 representing NM_004186
Red=Cloning site Green=Tags(s)

MLVAGLLLWASLLTGAWPSFPTQDHLPATPRVRLSFKELKATGTAHFFNLLNTTDYRILLKDEDHDMY
VGSKDYVLSLDLHDINREPLIIHWAASQRIEECVLSGKDVNGECGNFVRLIQPWNRTHLYVCGTGAYNP
MCTYVNRGRRAQATPWTQTQAVRGRGSRATDGALRPMPTAPRQDYIFYLEPERLESGKGCOPYDPKLDTA
SALINEELYAGVYIDFMGTDAAFRTLKGQTAMRTDQYNSRWLNDPSFIHAELIPDSAERNDDKLYFFFR
ERSAEAPQSPAVYARIGRICLNDDGGHCLVNKSTFLKARLVCSVPGEDGIETHFDELQDVFVQQTQDV
RNPVIYAVFTSSGSVFRGSAVCVYSMADIRMVFNPGFAHKEGPNYQWMPFSGKMPYPRPGTCTPGGTFPS
MKSTKDYPDEVINFMRSHPLMYQAVYPLQRRPLVVRTGAPYRLTTIAVDQVDAADGRYEVLFLGTRGTV
QKVIVLPKDDQEMEELMEEVEVFKDPAPVKTMTISSKRQQLYVASAVGVTHLSLHRCQAYGAACADCC
ARDPYCAWDGQACSRYTASSKRRSRRQDVRHGNIQRCRGNFNANKNAVESVQYGVAGSAAFLECPQRS
PQATVKWLFQRDPGDRRREIRAEDRFLRTEQGLLRALQLSDRGLYSCTATENNFKHVVTRVQLHVLGRD
AVHAALFPPLSMSAPPPGAGPPTPPYQELAQLLAQPEVGLIHQYCQGYWRHVPPSPREAPGAPRSPEPQ
DQKKPRNRRHHPPDT

TRTRPLEQKLISEEDLAANDILDYKDDDDKV

Restriction Sites: Sgfl-MluI

Cloning Scheme:


ACCN: NM_004186

ORF Size: 2355 bp

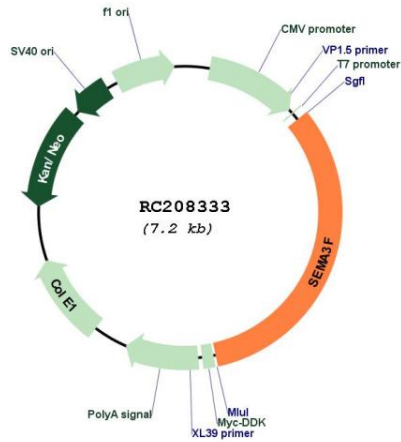
OTI Disclaimer: The molecular sequence of this clone aligns with the gene accession number as a point of reference only. However, individual transcript sequences of the same gene can differ through naturally occurring variations (e.g. polymorphisms), each with its own valid existence. This clone is substantially in agreement with the reference, but a complete review of all prevailing variants is recommended prior to use. [More info](#)

OTI Annotation: This clone was engineered to express the complete ORF with an expression tag. Expression varies depending on the nature of the gene.

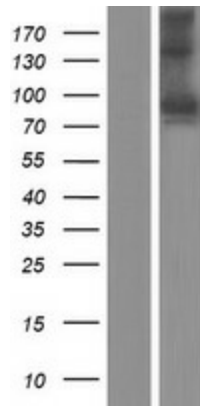
Components: The ORF clone is ion-exchange column purified and shipped in a 2D barcoded Matrix tube containing 10ug of transfection-ready, dried plasmid DNA (reconstitute with 100 ul of water).

Reconstitution Method:	<ol style="list-style-type: none">1. Centrifuge at 5,000xg for 5min.2. Carefully open the tube and add 100ul of sterile water to dissolve the DNA.3. Close the tube and incubate for 10 minutes at room temperature.4. Briefly vortex the tube and then do a quick spin (less than 5000xg) to concentrate the liquid at the bottom.5. Store the suspended plasmid at -20°C. The DNA is stable for at least one year from date of shipping when stored at -20°C.
RefSeq:	NM_004186.2 , NP_004177.2
RefSeq Size:	3540 bp
RefSeq ORF:	2358 bp
Locus ID:	6405
UniProt ID:	Q13275
Cytogenetics:	3p21.31
Domains:	Sema, IG, PSI
Protein Families:	Secreted Protein
Protein Pathways:	Axon guidance
MW:	88.2 kDa
Gene Summary:	<p>This gene encodes a member of the semaphorin III family of secreted signaling proteins that are involved in axon guidance during neuronal development. The encoded protein contains an N-terminal Sema domain, an immunoglobulin loop and a C-terminal basic domain. This gene is expressed by the endothelial cells where it was found to act in an autocrine fashion to induce apoptosis, inhibit cell proliferation and survival, and function as an anti-tumorigenic agent. Alternative splicing results in multiple transcript variants encoding different isoforms. [provided by RefSeq, Jan 2016]</p>

Product images:



Circular map for RC208333



Western blot validation of overexpression lysate (Cat# [LY418156]) using anti-DDK antibody (Cat# [TA50011-100]). Left: Cell lysates from untransfected HEK293T cells; Right: Cell lysates from HEK293T cells transfected with RC208333 using transfection reagent MegaTran 2.0 (Cat# [TT210002]).