

Product datasheet for RC208332

PRKX (NM_005044) Human Tagged ORF Clone

Product data:

Product Type:	Expression Plasmids
Product Name:	PRKX (NM_005044) Human Tagged ORF Clone
Tag:	Myc-DDK
Symbol:	PRKX
Synonyms:	PKX1
Mammalian Cell Selection:	Neomycin
Vector:	pCMV6-Entry (PS100001)
E. coli Selection:	Kanamycin (25 ug/mL)
ORF Nucleotide Sequence:	>RC208332 ORF sequence Red=Cloning site Blue=ORF Green=Tags(s)

TTTTGTAATACGACTCACTATAGGGCGGCCGGGAATTCGTCGACTGGATCCGGTACCGAGGAGATCTGCC
GCC**CGATCGCC**

ATGGAGGCGCCCGGGCTGGCCAGGCGGCCGGCGGAGAGCGACTCCCACAAGGTGGCGGAGGAGACCC
CCGACGGGGCGCCCGCCTCTGCCCCAGCCCTGAGGCGCTGTCGCGGAGCCGCTGTGTACAGCCTGCA
GGACTTTGACACGCTGGCCACCGTGGGCACTGGGACGTTGGGCGGGTGCACCTGGTGAAGGAGAAGACA
GCCAAGCATTCTTCGCCCTCAAGGTGATGAGCATTCTGACGTCATCCGCCTAAAGCAGGAGCAACACG
TACACAATGAGAAGTCTGCTCCTGAAGGAAGTCAGCCACCCGTTCTCATCAGGCTGTTCTGGACGTGGCA
TGACGAGCGCTTCTCTACATGCTCATGGAGTAGTGCCGGGCGGCGAGCTTTCAGCTACCTGCGCAAC
CGGGGGCGCTTCTCCAGCACACGGGGCTTCTACTCTGCAGAGATCATCTGTGCCATCGAGTACCTGC
ACTCCAAGAGATCGTCTACAGGACTTGAAGCCAGAGAACATCCTGCTGGATAGGGATGGCCACATTAA
GCTCACGGACTTTGGGTTCCGCAAGAAGCTGGTAGACAGGACTTGGACCCTCTGTGGAACACCCGAGTAC
CTAGCCCCGAAGTATTAGAGCAAGGGCCACGGAAGGGCCGTGGACTGGTGGGCCCTCGGCATCCTGA
TATTCGAGATGCTTTCGGGGTTTCTCCGTTTTTGGATGACAACCCGTTTGGCATTATCAGAAAATTCT
TGCAGGCAAAATAGATTTCCCCAGACATTTGGATTTCCATGTAAGAACCTCATTAAAGAACTGCTCGTG
GTTGACAGAACAAAGGCGATTAGGAAACATGAAGAACGGGCGCAATGATGTGAAGCATCATCGGTGGTTCC
GCTCCGTGGACTGGGAAGCTGTTCCGAGAGAAAAGTGAAGCCTCCCATCGTGCCCAAGATAGCTGGTGA
CGGCGACACTTCCAACCTCGAAACTTACCTGAGAATGACTGGGACACAGCCGCGCCCGTCCCGCAGAAG
GATTTAGAAATCTTCAAGAATTC

ACGCGTACGCGGCCGCTCGAGCAGAAAACATCTCAGAAGAGGATCTGGCAGCAATGATATCCTGGATT
ACAAGGATGACGACGATAAGGTTAA



[View online »](#)

Protein Sequence: >RC208332 protein sequence
Red=Cloning site Green=Tags(s)

MEAPGLAQAAAESDSRKVAEETPDGAPALCPSPEALSPEPPVYSLQDFDTLATVGTGTFGRVHLVKEKT
 AKHFFALKVMSIPDVIRLKQEQHVHNEKSVLKEVSHPFLLIRLFWTWHDERFLYMLMEYVPGGELFSYLNRN
 RGRFSSTTGLFYSAEIIICAEIYLHSKEIVYRDLKPENILLDRDGHKILDFGFAKKLVDRTWLTCGTPEY
 LAPEVIQSKGHGRAVDWWALGILIFEMLSGFPPFFDDNPFGIYQKILAGKIDFPRHLDFHVKDLIKKLLV
 VDRTRRLGNMKNGANVKKHRWFRSVDWEAVPQRKLPPIVPKIAGDGDTSNFETYPENDWDTAAPVPQK
 DLEIFKNF

TRTRPLEQKLISEEDLAANDILDYKDDDDKV

Chromatograms: https://cdn.origene.com/chromatograms/mk6125_b04.zip

Restriction Sites: SgfI-MluI

Cloning Scheme:



ACCN: NM_005044

ORF Size: 1074 bp

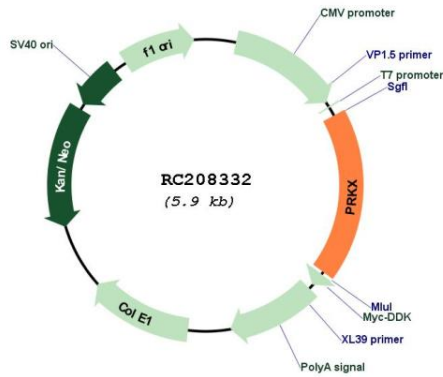
OTI Disclaimer: The molecular sequence of this clone aligns with the gene accession number as a point of reference only. However, individual transcript sequences of the same gene can differ through naturally occurring variations (e.g. polymorphisms), each with its own valid existence. This clone is substantially in agreement with the reference, but a complete review of all prevailing variants is recommended prior to use. [More info](#)

OTI Annotation: This clone was engineered to express the complete ORF with an expression tag. Expression varies depending on the nature of the gene.

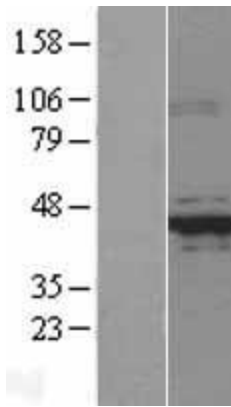
Components: The ORF clone is ion-exchange column purified and shipped in a 2D barcoded Matrix tube containing 10ug of transfection-ready, dried plasmid DNA (reconstitute with 100 ul of water).

Reconstitution Method:	<ol style="list-style-type: none">1. Centrifuge at 5,000xg for 5min.2. Carefully open the tube and add 100ul of sterile water to dissolve the DNA.3. Close the tube and incubate for 10 minutes at room temperature.4. Briefly vortex the tube and then do a quick spin (less than 5000xg) to concentrate the liquid at the bottom.5. Store the suspended plasmid at -20°C. The DNA is stable for at least one year from date of shipping when stored at -20°C.
RefSeq:	NM_005044.2
RefSeq Size:	6084 bp
RefSeq ORF:	1077 bp
Locus ID:	5613
UniProt ID:	P51817
Cytogenetics:	Xp22.33
Domains:	pkinase, S_TK_X, TyrKc, S_TKc
Protein Families:	Druggable Genome, Protein Kinase
Protein Pathways:	Apoptosis, Calcium signaling pathway, Chemokine signaling pathway, Dilated cardiomyopathy, Gap junction, GnRH signaling pathway, Hedgehog signaling pathway, Insulin signaling pathway, Long-term potentiation, MAPK signaling pathway, Melanogenesis, Olfactory transduction, Oocyte meiosis, Prion diseases, Progesterone-mediated oocyte maturation, Taste transduction, Vascular smooth muscle contraction, Vibrio cholerae infection, Wnt signaling pathway
MW:	40.9 kDa
Gene Summary:	This gene encodes a serine threonine protein kinase that has similarity to the catalytic subunit of cyclic AMP dependent protein kinases. The encoded protein is developmentally regulated and may be involved in renal epithelial morphogenesis. This protein may also be involved in macrophage and granulocyte maturation. Abnormal recombination between this gene and a related pseudogene on chromosome Y is a frequent cause of sex reversal disorder in XX males and XY females. Pseudogenes of this gene are found on chromosomes X, 15 and Y. [provided by RefSeq, Feb 2010]

Product images:



Circular map for RC208332



Western blot validation of overexpression lysate (Cat# [LY401566]) using anti-DDK antibody (Cat# [TA50011-100]). Left: Cell lysates from untransfected HEK293T cells; Right: Cell lysates from HEK293T cells transfected with RC208332 using transfection reagent MegaTran 2.0 (Cat# [TT210002]).



Coomassie blue staining of purified PRKX protein (Cat# [TP308332]). The protein was produced from HEK293T cells transfected with PRKX cDNA clone (Cat# RC208332) using MegaTran 2.0 (Cat# [TT210002]).